

Newly displaced subscribers from violence-affected neighbourhoods, Carrefour-Feuilles and Savanes Pistache: Situation as of 26 August 2023

Executive summary

Heightened gang violence since 12 August 2023 in the neighbourhoods of Carrefour-Feuilles and Savanes Pistache in Port-au-Prince, with a new severe episode on 24 August, triggered significant relocations of the subscriber residents of the participating mobile network operator (MNO) from these zones and neighbouring areas. Estimates derived from the MNO's data suggest that at least 1,760 additional MNO subscribers may have left the affected area between 19 and 26 August 2023. Together with the displaced subscribers between 12 and 19 August (see [report 1](#)), about 55.3% of the subscribers residing in the affected area have left. Most of the newly displaced subscribers have sought refuge in Tapis Rouge, Avenue Christophe and Pacot. Nine additional neighbourhoods experienced more than 15 newly displaced subscribers. Rankings are detailed in Table 1 on page 2 of the report, showcasing the areas most impacted by this subscriber residents shift. Lastly, as of 26 August, provisional estimates suggest that 5,737 subscribers remained displaced (this figure might include displacements originating from areas other than Carrefour-Feuilles and Savanes Pistache).

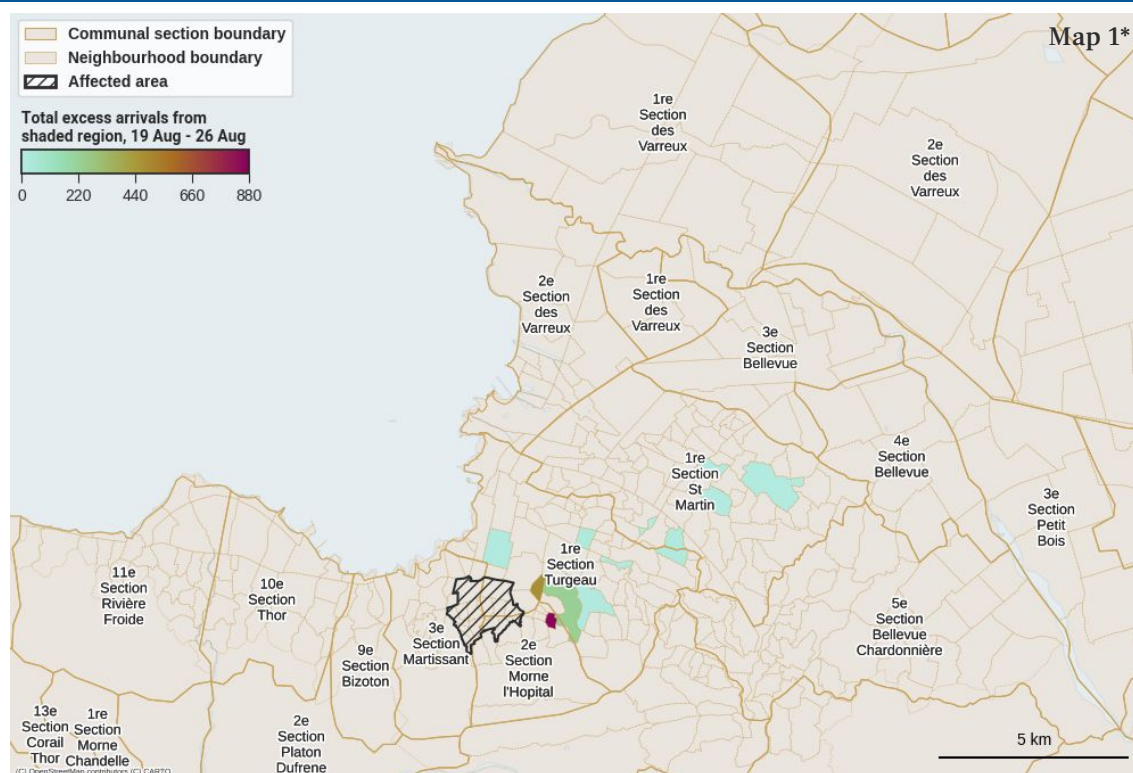
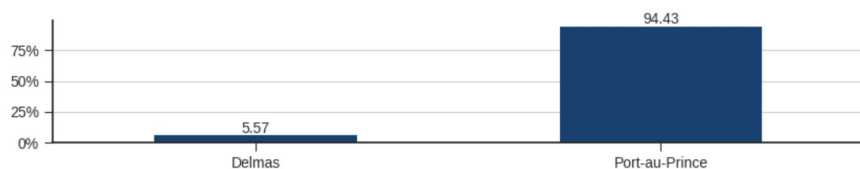
Where have residents of the affected area been newly displaced to around Haiti between 19-26 August 2023?

Displaced subscribers

The coloured regions in Map 1 (right) correspond to the **number of newly displaced MNO's subscribers** from the shaded area affected by violence (calculated as excess arrivals from the area affected by violence, see [page 3](#)). Estimated displacements are assumed to be mostly related to the violence but could also include subscribers not affected.

We see from Graph 1 (below) that the majority of newly displaced subscribers from the affected area **relocated to a neighbourhood within the commune of Port-au-Prince (94.4%)**. The remaining new relocations were **to a neighbourhood within the commune of Delmas (5.6%)**. (for a list of the most affected neighbourhoods, see the table on page 2)

Graph 1: Percentage of new relocations from affected area (per commune)



Newly displaced subscribers from the affected area between 19 and 26 August:

1,760 subscribers

Percentage change of residents within affected area:

- 55.3%

Neighbourhoods with > 15 excess arrivals from affected area:

12

Subscribers remaining displaced since the start of the events:

5,737 subscribers

Table 1: Ranking of neighbourhoods by newly displaced subscribers (number of new arrivals above expected) from the affected area.

Rank	Commune	Communal Section	Neighbourhood	Displaced subscribers
1	Port-au-Prince	2ème Morne l'Hopital	Tapis Rouge	871
2	Port-au-Prince	1re Section Turgeau	Avenue Christophe	472
3	Port-au-Prince	1re Section Turgeau	Pacot	228
4	Port-au-Prince	1re Section Turgeau	Babiolo - Debussy - Haut Turgeau	31
5	Delmas	1ère Saint martin	Siloe	31
6	Port-au-Prince	1re Section Turgeau	Revine Pintade	28
7	Port-au-Prince	1re Section Turgeau	Morne-à-Tuf	24
8	Delmas	1ère Saint martin	Delmas 40b	23
9	Delmas	1ère Saint martin	Rousseau - Dupre - Village ULDECA	20
10	Delmas	1ère Saint martin	Delmas 32 - Lakou New York - REMY	18
11	Port-au-Prince	1re Section Turgeau	Canape-Vert (Lalue)	17
12	Delmas	1ère Saint martin	Peligre - Charbonnière	17

This report and its contents may only be shared with attribution to the Flowminder Foundation. Adaptation is permitted as long as the changes are indicated and the Flowminder Foundation is cited. Use of the report and its contents is limited to humanitarian and development purposes.

Disclaimer of Warranties and Limitation of Liability: *To the extent possible, Flowminder offers this report and its contents as-is and as-available, and make no representations or warranties of any kind concerning this report and its contents, whether express, implied, statutory, or other. This includes, without limitation, warranties of title, merchantability, fitness for a particular purpose, non-infringement, absence of latent or other defects, accuracy, or the presence or absence of errors, whether or not known or discoverable.*

To the extent possible, in no event will Flowminder be liable on any legal theory (including, without limitation, negligence) or otherwise for any direct, special, indirect, incidental, consequential, punitive, exemplary, or other losses, costs, expenses, or damages arising out of the use of the report or its contents, even if Flowminder has been advised of the possibility of such losses, costs, expenses, or damages. The disclaimer of warranties and limitation of liability provided above shall be interpreted in a manner that, to the extent possible, most closely approximates an absolute disclaimer and waiver of all liability.

Data & data privacy

No personal data, such as an individual's identity, demographics, location, contacts or movements, **is made available** to the government or any other third party at any time. All results produced by Flowminder are aggregated results (for example, subscriber density in a given municipality), which means that they do not contain any information about individual subscribers. **This data is fully anonymised.** This approach complies with the European Union's General Data Protection Regulation (EU GDPR 2016/679). Data is processed on a server installed behind the mobile network operator's firewall in Haiti, and no personal data leaves the operator's premises.

Data considerations

The estimates shown are our best current assessment of movements. However, there are a number of uncertainties. The information should be interpreted together with other available evidence.

We welcome feedback to help us improve future reports and requests for specific types of analysis

Please email info@flowminder.org with any feedback and suggestions, or if you have any specific analytical requirements we can support.

Acknowledgements

This study was made possible thanks to the anonymised data provided by a mobile network operator in Haiti. The International Organization for Migration (IOM) is acknowledged for its advice, feedback, and information on the affected areas.

This work has also been possible thanks to funding by the Agence Française de Développement, the William and Flora Hewlett Foundation and the Swiss Federal Department of Foreign Affairs (FDFA) that support current Flowminder's activities in Haiti, where Flowminder focuses on enabling the increased access to and use of mobile operator data in ways that are ethically sound, financially viable, and sustainable