

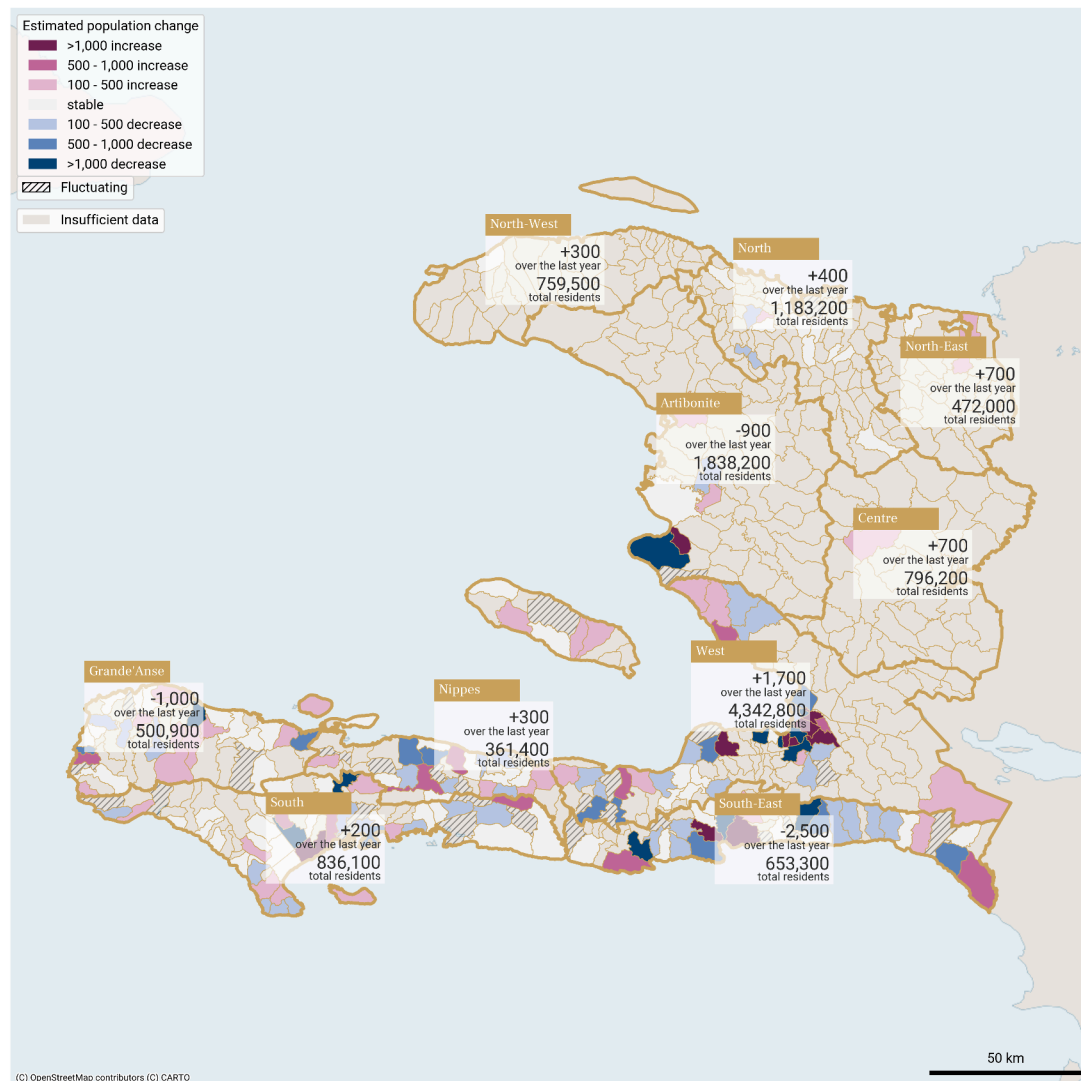
Communal sections with the largest estimated change in population between 01 Nov 25 - 31 May 26

Department	Communal section	Population estimate May 2026	Trend type in the last 12 months	Estimated change over the last 12 months
West	2e Section Morne l'Hopital	179,200	Increasing	11,720
West	1re Section Turgeau	479,700	Decreasing	-9,280
Artibonite	2e Section Bois Neuf (Saint-Marc)	64,300	Decreasing	-3,460
West	1re Section St Martin	499,600	Increasing	3,350
West	5e Section Bellevue Chardonniere	280,300	Increasing	2,730

### Key observations for the period 01 Nov 25 - 31 May 26

- Overall, most communal sections show stable population estimates or minor changes (±500 people) between November 2025 and May 2026, and/or between April and May.
- In the Port-au-Prince Metropolitan Area (ZMPAP), the population continued to increase in 2e Section Morne l'Hôpital (Port-au-Prince) (+11,720), 1re Section St Martin (Delmas) (+3,350), and 5e Section Bellevue Chardonniere (Pétion-Ville) (+2,730) between November 2025 and May 2026. From April to May 2026 the population increased in 3e Section Bellevue (Tabarre ) by +2,280 people. Increase in the population in Delmas and Tabarre is potentially due to refugee arrivals following clashes (ETT93.2). In contrast, the population of 3e Section Etang du Jonc (Petion-Ville) continues to decrease (-2,630), while the population in 1re Section Turgeau (Port-au-Prince) remains stable after a sharp drop in January 2026.
- In West outside ZMPAP, the largest population increase was in 3e Section Petit Boucan (Gressier) (+1,540), while the largest population decrease was in 9e Section Bizoton (Carrefour ) (-1,590).
- In South, the estimated population of 1re Section Bourdet (Les Cayes) increased sharply from April to May by +1,680, while 2e Section Fonfrede (Les Cayes ) decreased from April to May (-1,190).
- In South East, the estimated population declined by 2,500 since November 2025, with the largest continuing decreases in 6e Section Montagne La Voûte (Jacmel) (-1,540), 5e Section Bas de Grandou (Bainet) (-1,050) and in 3e Section Macary (Marigot) (-1,050). The population continued increasing in 10e Section La Vanneau (Jacmel) (+2,470) and 1re Section Bas Cap Rouge (Jacmel) (+1,330). The population decrease in Marigot and increase in Jacmel is potentially due to armed attacks (ETT89.1).

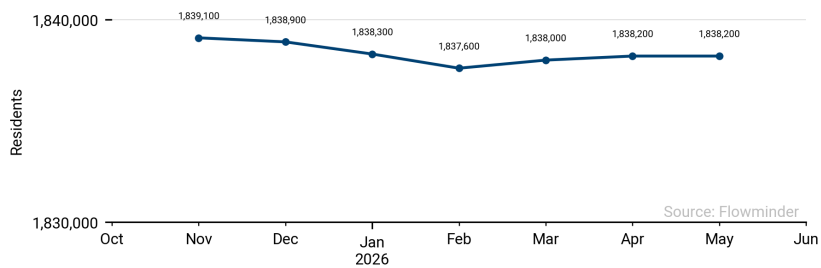
Cumulative estimated population change by departments and communal sections between 1 Nov 2025 and 31 May 2026



These population estimates come from Call Detail Records (CDRs) (mobile phone usage data) and other datasets for reference and adjustments. The estimates provided are not survey estimates, key informant estimates or field observations. If you are unfamiliar with this data source please read our documentation which can be found at [www.flowminder.org](http://www.flowminder.org)

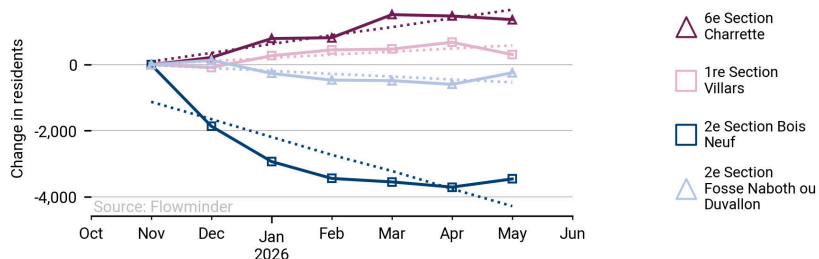
Monthly estimated population in Artibonite (01 Nov 25 - 31 May 26)

Sum of all communal sections incl. those with no CDRs

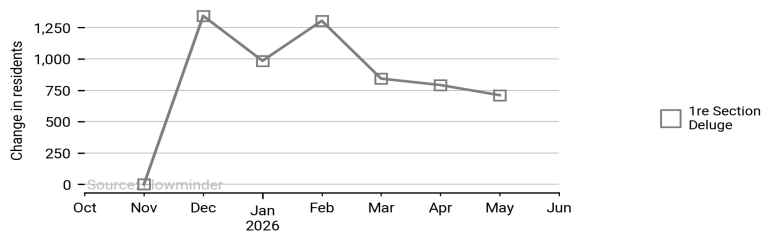


Communal sections in Artibonite with largest estimated change in population (01 Nov 25 - 31 May 26)

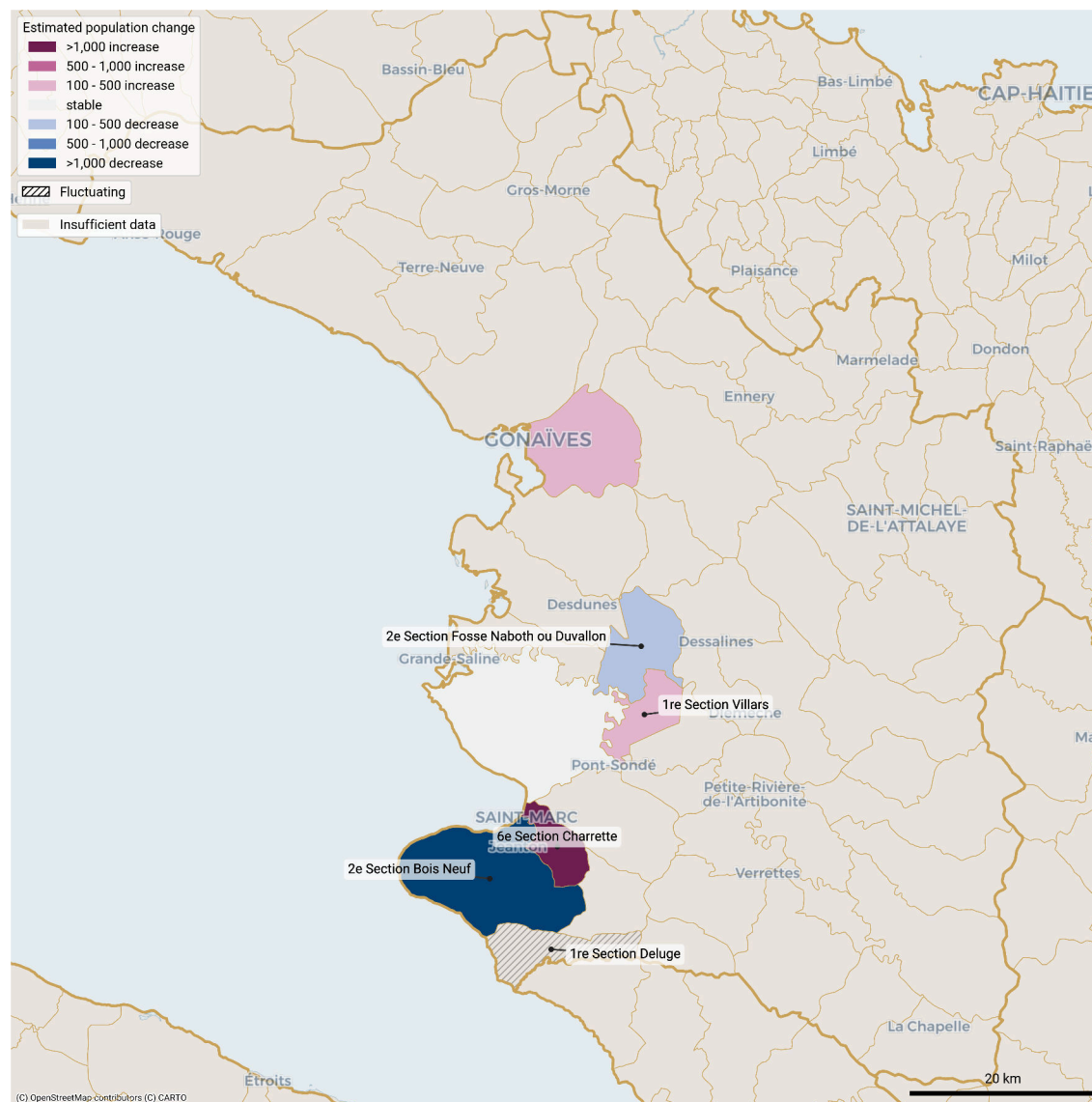
Solid line: estimates. Dotted line: model.



Largest month-to-month changes in resident population in fluctuating communal sections in Artibonite -department (01 Nov 25 - 31 May 26)



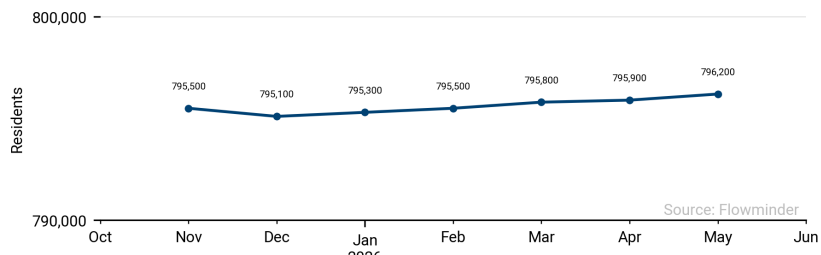
Cumulative estimated population change per communal section in Artibonite from 1 Nov 2025 to 31 May 2026



These population estimates come from Call Detail Records (CDRs) (mobile phone usage data) and other datasets for reference and adjustments. The estimates provided are not survey estimates, key informant estimates or field observations. If you are unfamiliar with this data source please read our documentation which can be found at [www.flowminder.org](http://www.flowminder.org)

### Monthly estimated population in Centre (01 Nov 25 - 31 May 26)

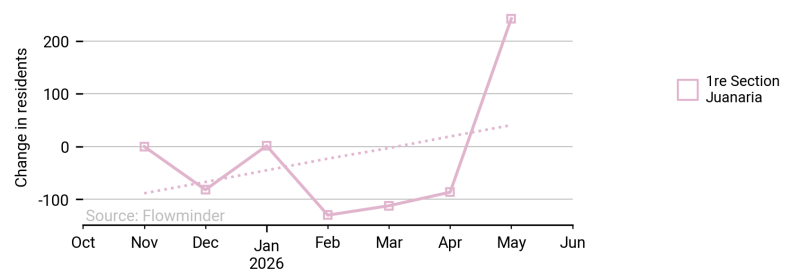
Sum of all communal sections incl. those with no CDRs



Source: Flowminder

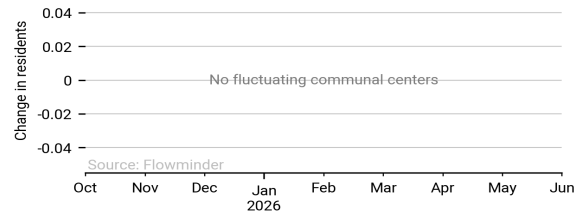
### Communal sections in Centre with largest estimated change in population (01 Nov 25 - 31 May 26)

Solid line: estimates. Dotted line: model.



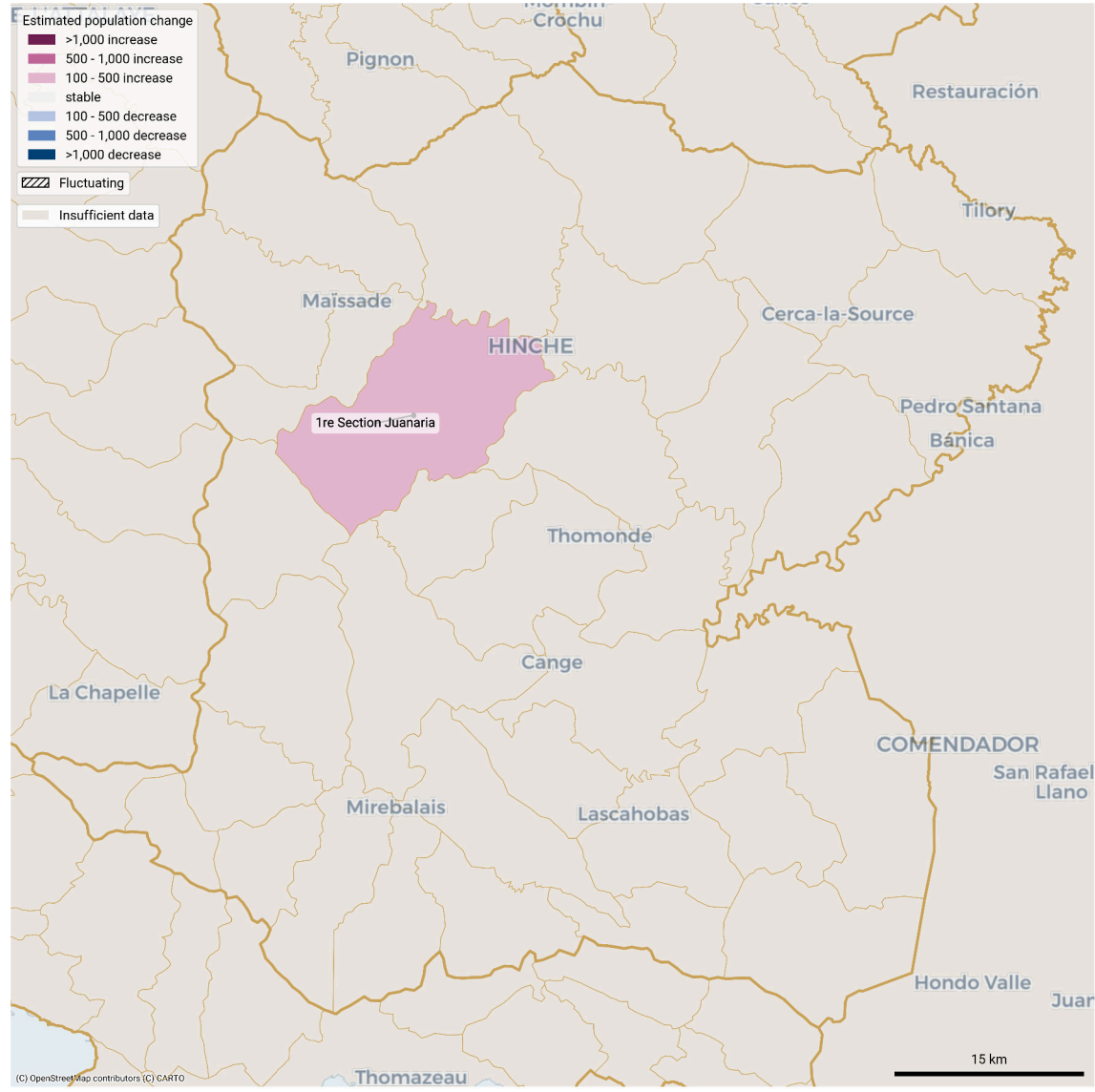
Source: Flowminder

### Largest month-to-month changes in resident population in fluctuating communal sections in Centre -department (01 Nov 25 - 31 May 26)



Source: Flowminder

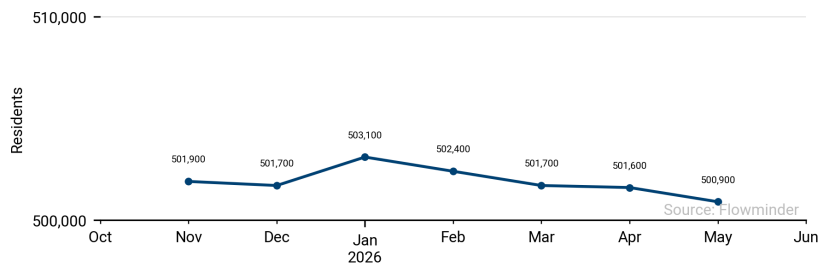
### Cumulative estimated population change per communal section in Centre from 1 Nov 2025 to 31 May 2026



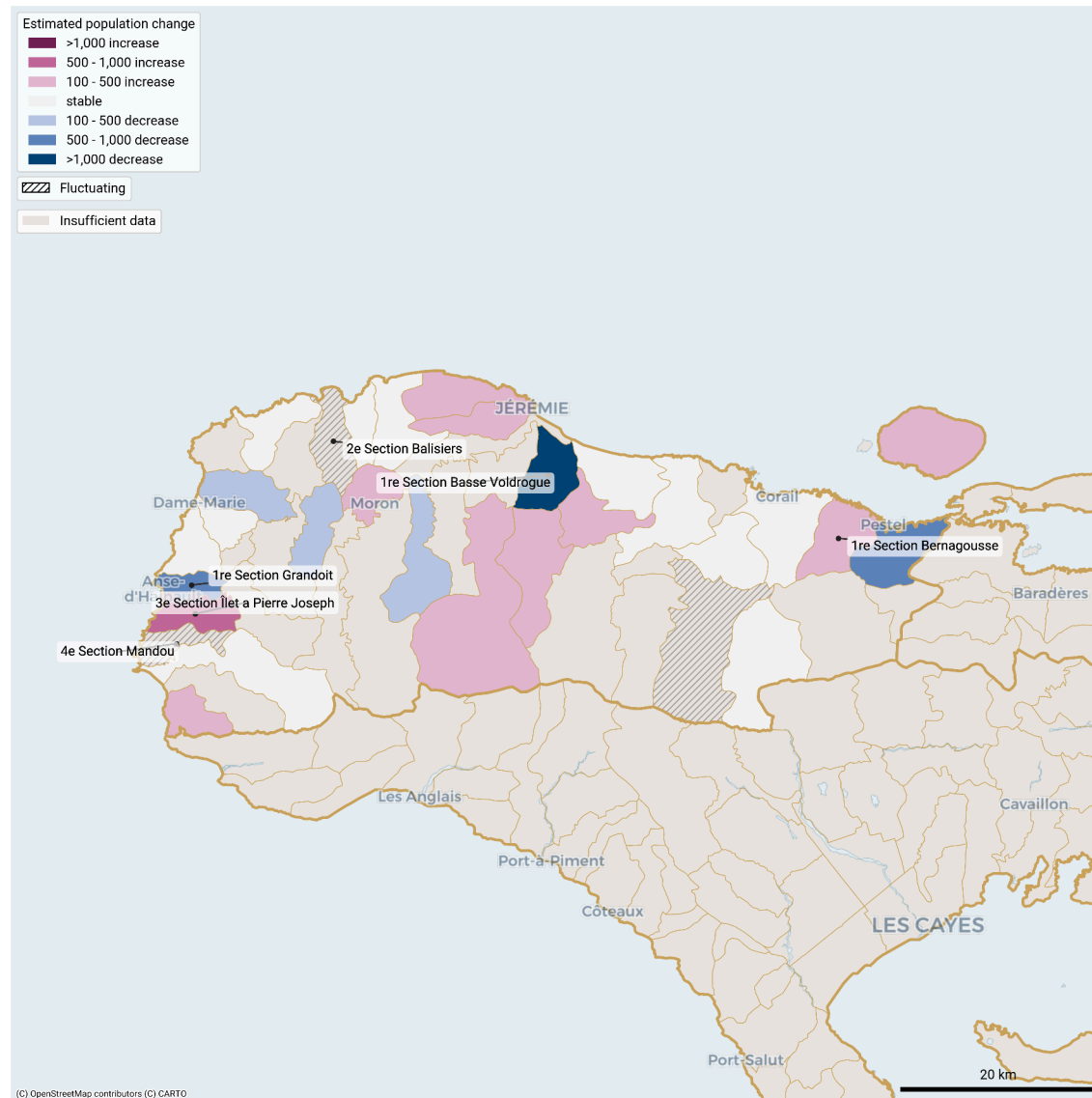
These population estimates come from Call Detail Records (CDRs) (mobile phone usage data) and other datasets for reference and adjustments. The estimates provided are not survey estimates, key informant estimates or field observations. If you are unfamiliar with this data source please read our documentation which can be found at [www.flowminder.org](http://www.flowminder.org)

Monthly estimated population in Grande'Anse (01 Nov 25 - 31 May 26)

Sum of all communal sections incl. those with no CDRs

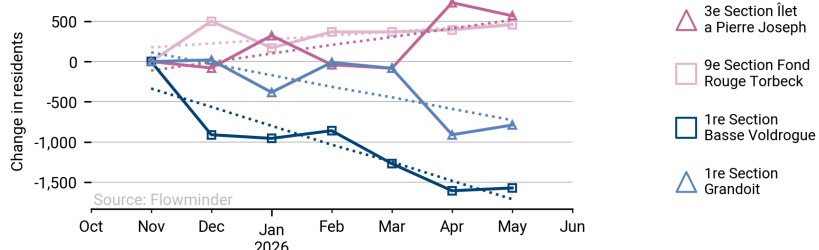


Cumulative estimated population change per communal section in Grande'Anse from 1 Nov 2025 to 31 May 2026

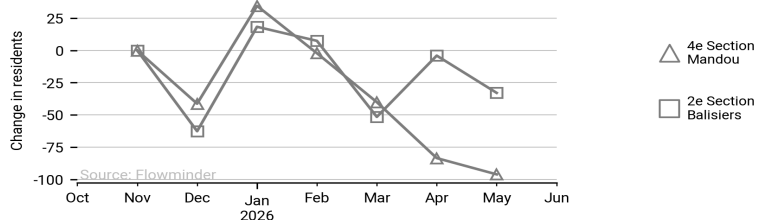


Communal sections in Grande'Anse with largest estimated change in population (01 Nov 25 - 31 May 26)

Solid line: estimates. Dotted line: model.



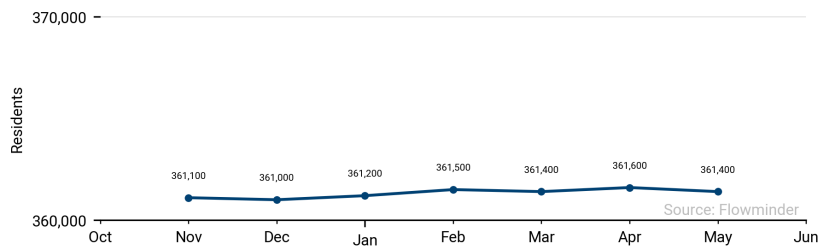
Largest month-to-month changes in resident population in fluctuating communal sections in Grande'Anse -department (01 Nov 25 - 31 May 26)



These population estimates come from Call Detail Records (CDRs) (mobile phone usage data) and other datasets for reference and adjustments. The estimates provided are not survey estimates, key informant estimates or field observations. If you are unfamiliar with this data source please read our documentation which can be found at [www.flowminder.org](http://www.flowminder.org)

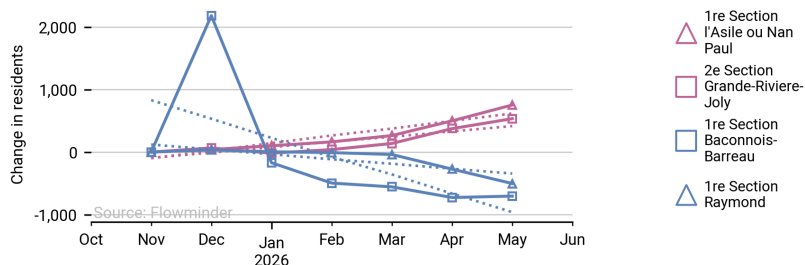
Monthly estimated population in Nippes (01 Nov 25 - 31 May 26)

Sum of all communal sections incl. those with no CDRs

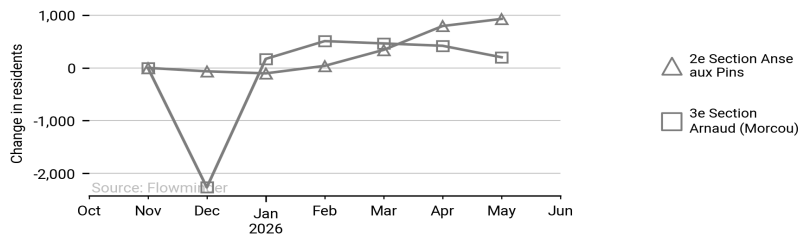


Communal sections in Nippes with largest estimated change in population (01 Nov 25 - 31 May 26)

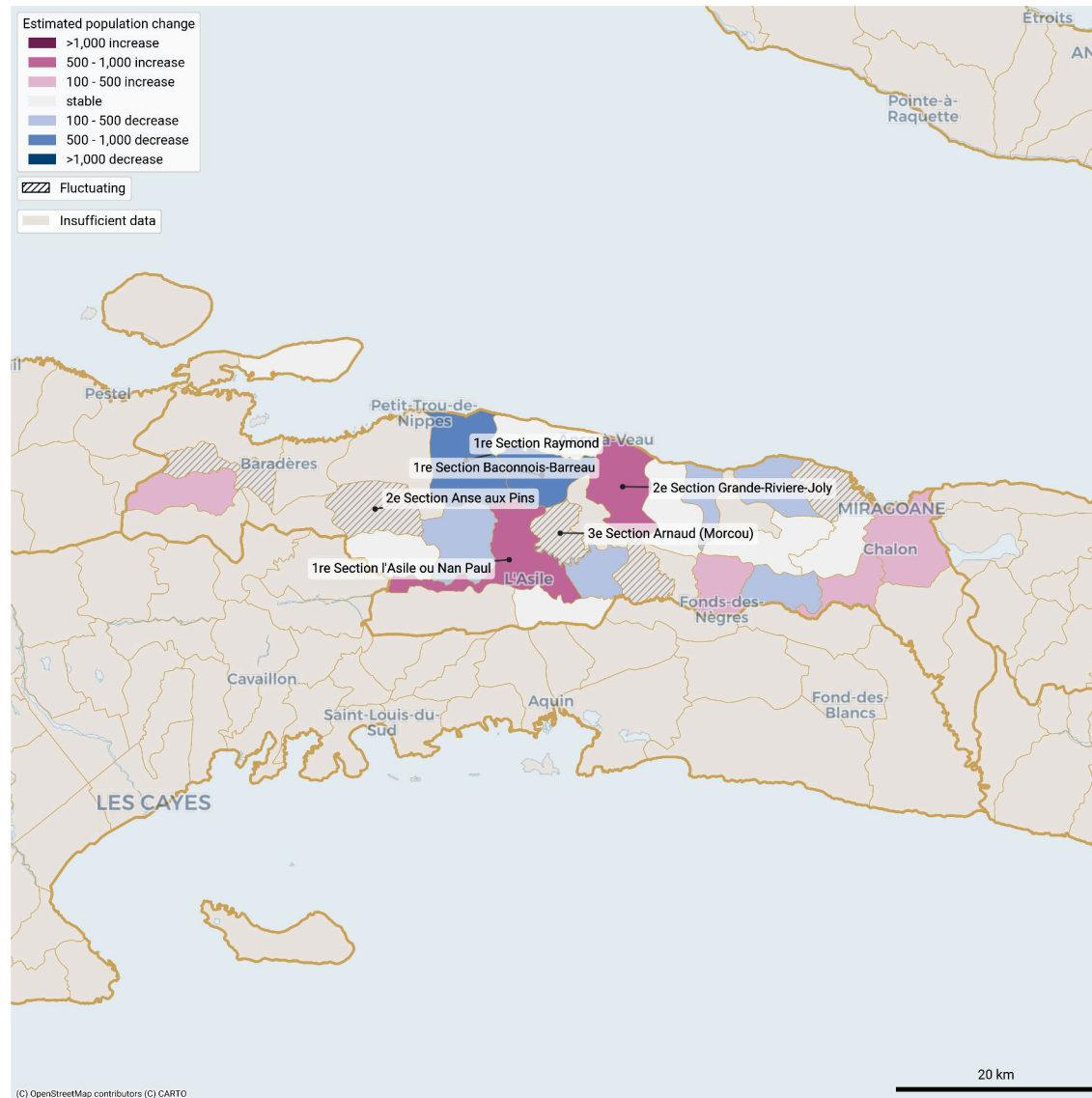
Solid line: estimates. Dotted line: model.



Largest month-to-month changes in resident population in fluctuating communal sections in Nippes -department (01 Nov 25 - 31 May 26)



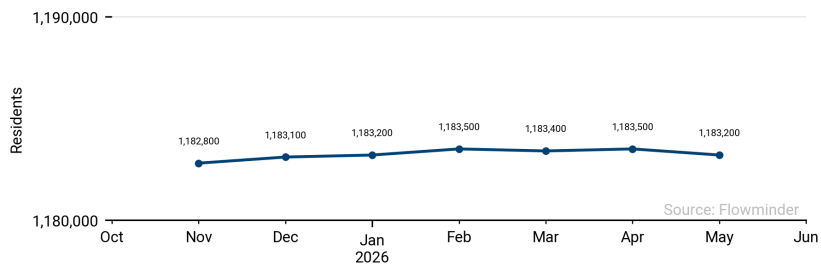
Cumulative estimated population change per communal section in Nippes from 1 Nov 2025 to 31 May 2026



These population estimates come from Call Detail Records (CDRs) (mobile phone usage data) and other datasets for reference and adjustments. The estimates provided are not survey estimates, key informant estimates or field observations. If you are unfamiliar with this data source please read our documentation which can be found at [www.flowminder.org](http://www.flowminder.org)

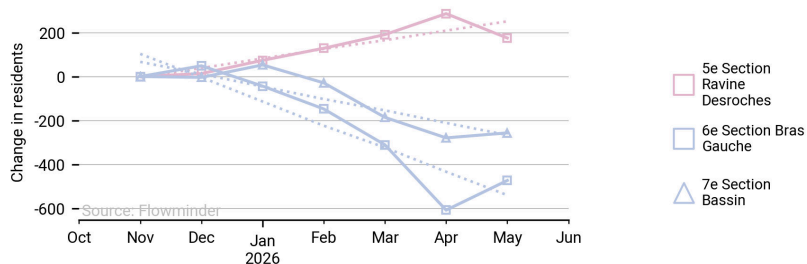
Monthly estimated population in North (01 Nov 25 - 31 May 26)

Sum of all communal sections incl. those with no CDRs

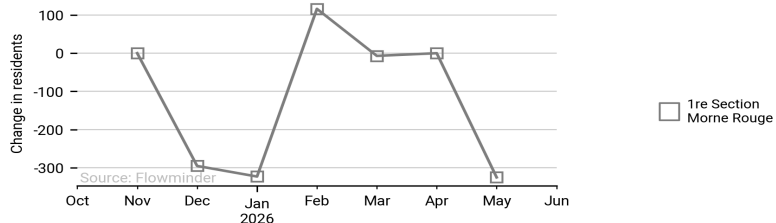


Communal sections in North with largest estimated change in population (01 Nov 25 - 31 May 26)

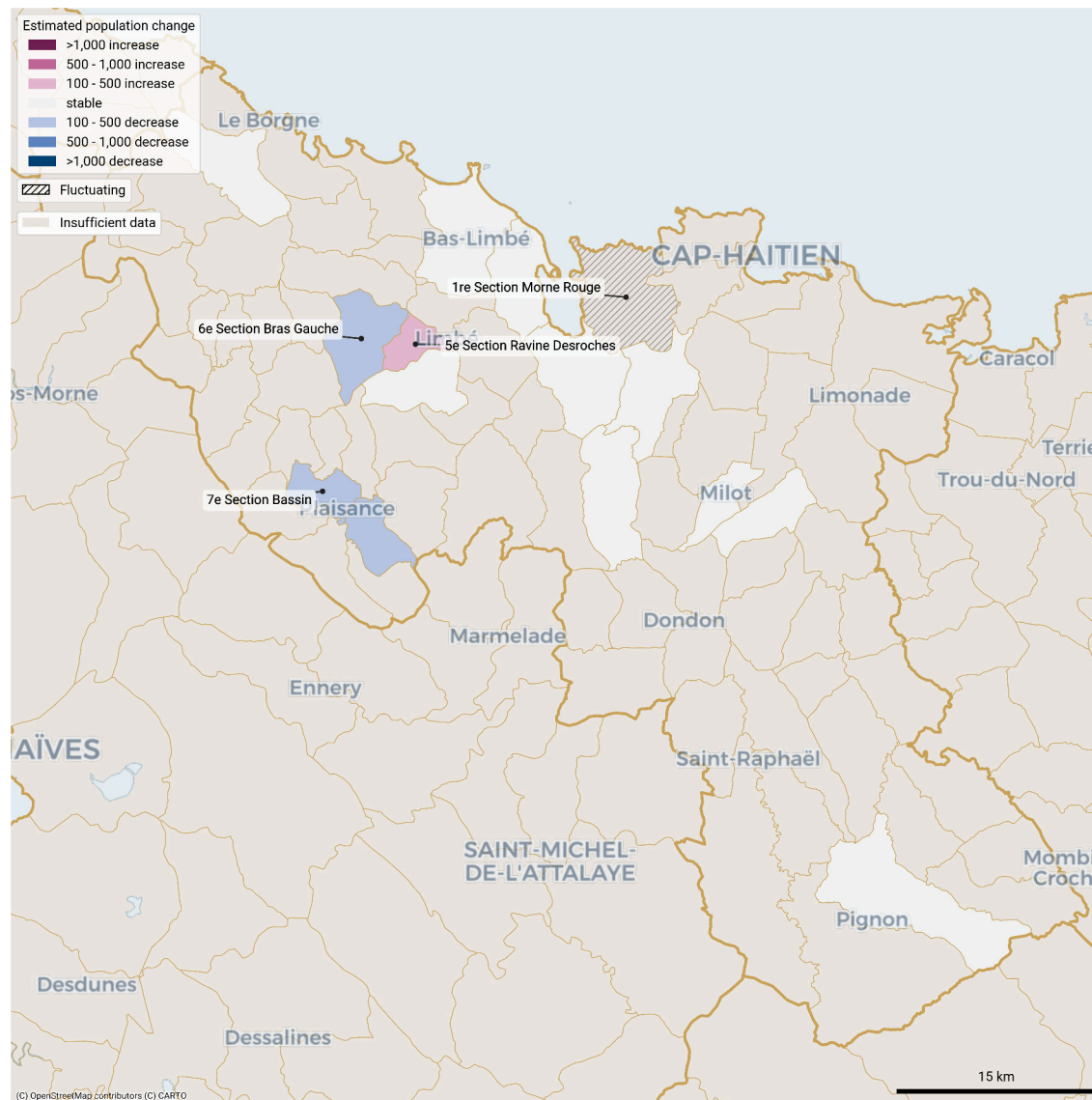
Solid line: estimates. Dotted line: model.



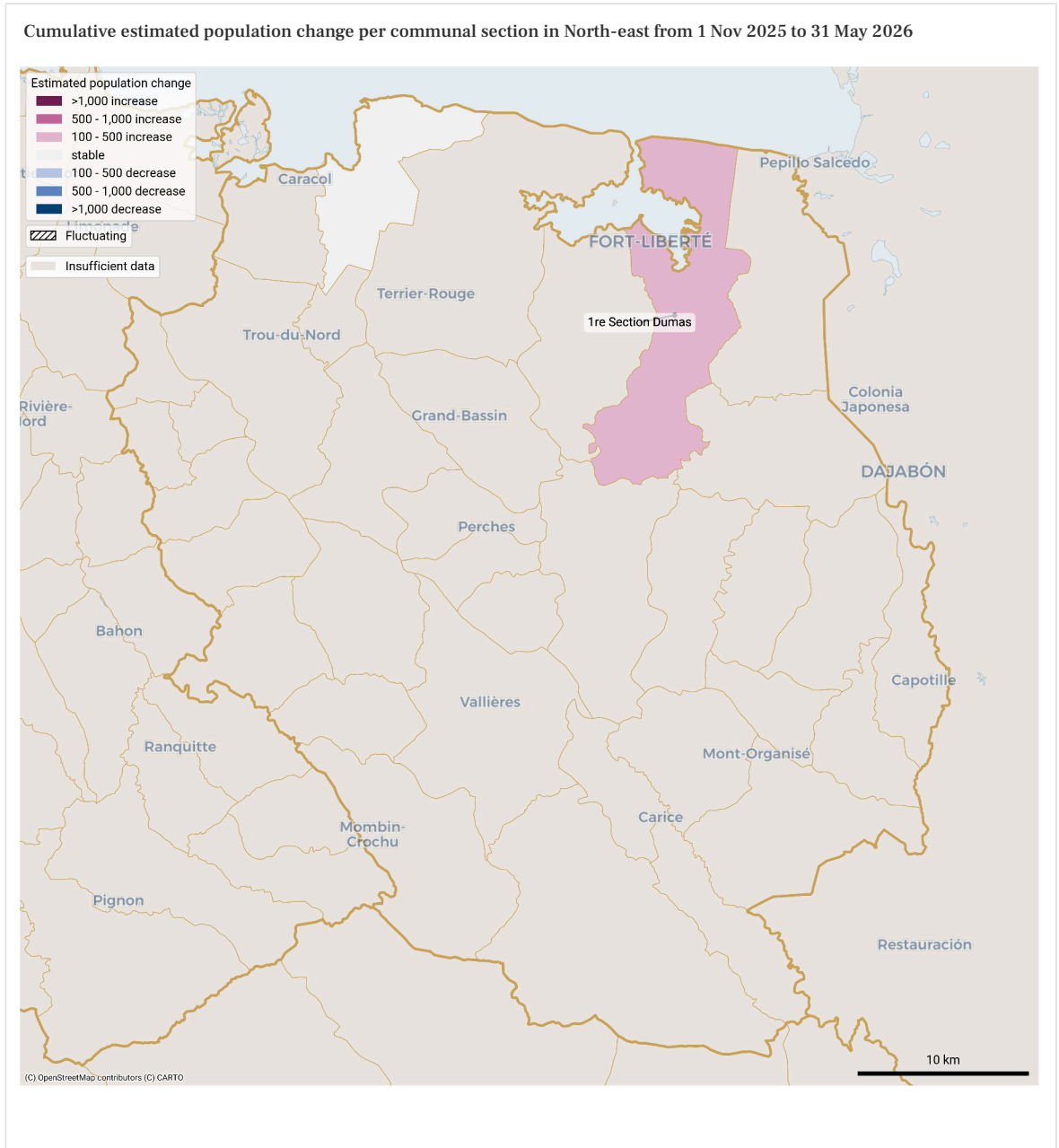
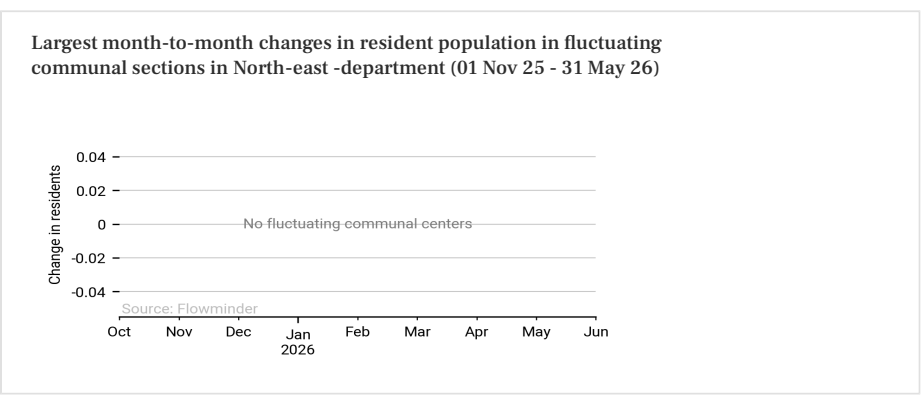
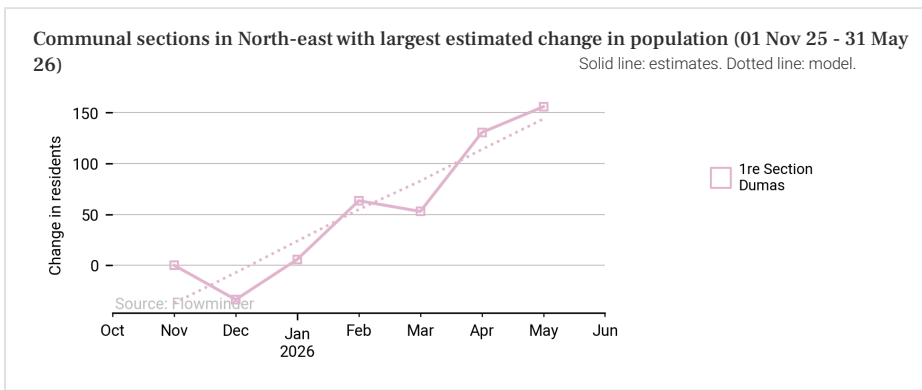
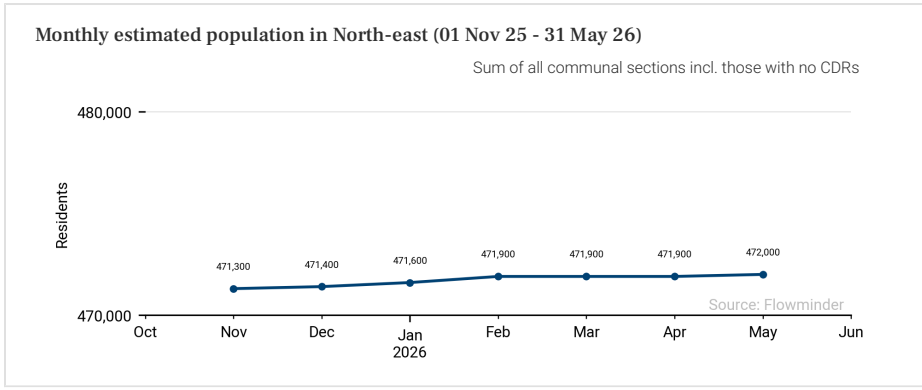
Largest month-to-month changes in resident population in fluctuating communal sections in North -department (01 Nov 25 - 31 May 26)



Cumulative estimated population change per communal section in North from 1 Nov 2025 to 31 May 2026



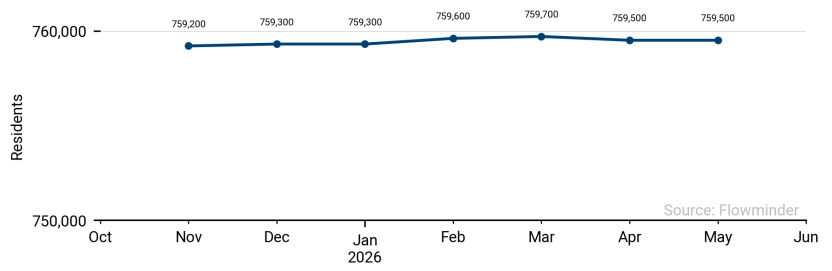
These population estimates come from Call Detail Records (CDRs) (mobile phone usage data) and other datasets for reference and adjustments. The estimates provided are not survey estimates, key informant estimates or field observations. If you are unfamiliar with this data source please read our documentation which can be found at [www.flowminder.org](http://www.flowminder.org)



These population estimates come from Call Detail Records (CDRs) (mobile phone usage data) and other datasets for reference and adjustments. The estimates provided are not survey estimates, key informant estimates or field observations. If you are unfamiliar with this data source please read our documentation which can be found at [www.flowminder.org](http://www.flowminder.org)

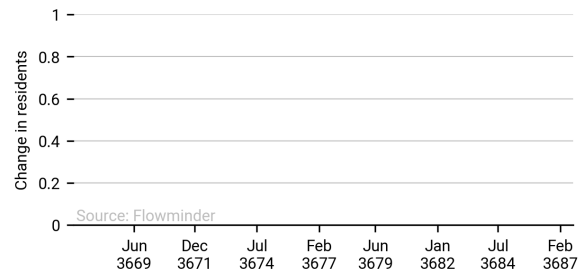
### Monthly estimated population in North-west (01 Nov 25 - 31 May 26)

Sum of all communal sections incl. those with no CDRs

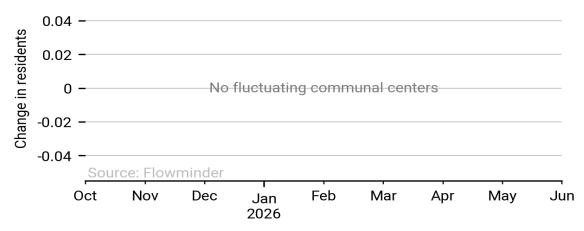


### Communal sections in North-west with largest estimated change in population (01 Nov 25 - 31 May 26)

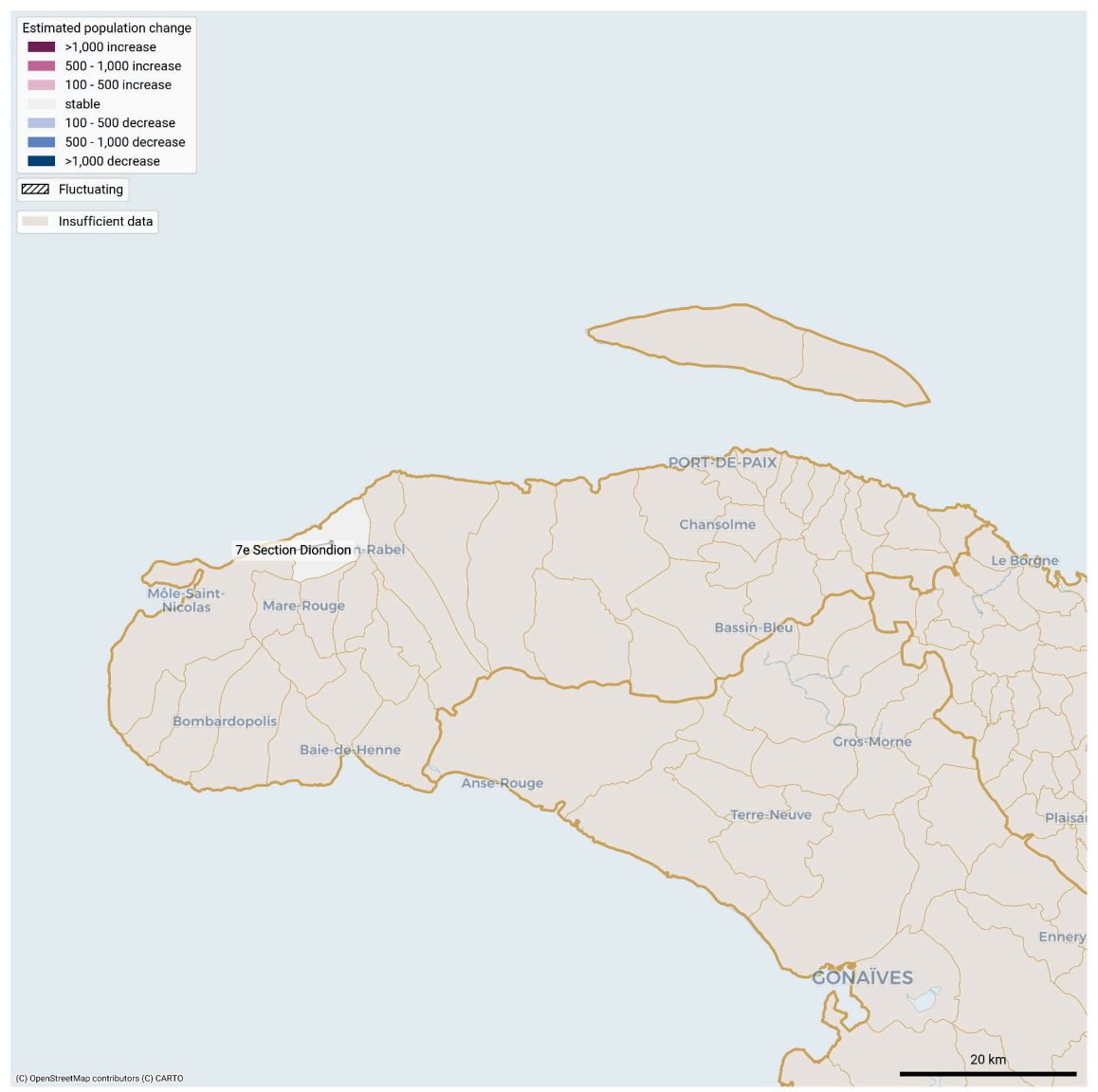
Solid line: estimates. Dotted line: model.



### Largest month-to-month changes in resident population in fluctuating communal sections in North-west -department (01 Nov 25 - 31 May 26)



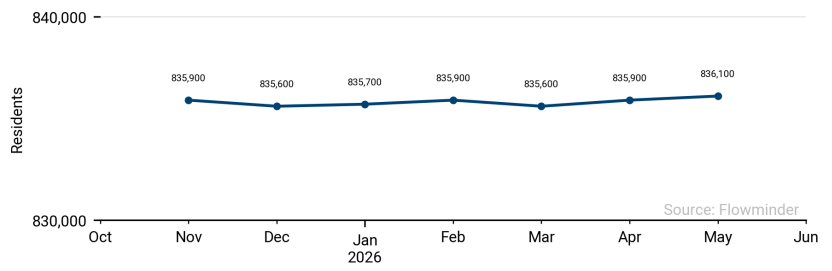
### Cumulative estimated population change per communal section in North-west from 1 Nov 2025 to 31 May 2026



These population estimates come from Call Detail Records (CDRs) (mobile phone usage data) and other datasets for reference and adjustments. The estimates provided are not survey estimates, key informant estimates or field observations. If you are unfamiliar with this data source please read our documentation which can be found at [www.flowminder.org](http://www.flowminder.org)

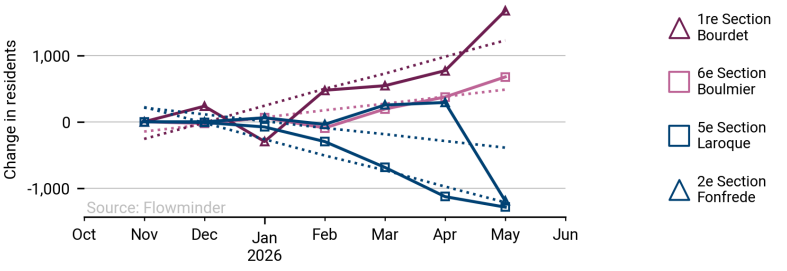
### Monthly estimated population in South (01 Nov 25 - 31 May 26)

Sum of all communal sections incl. those with no CDRs

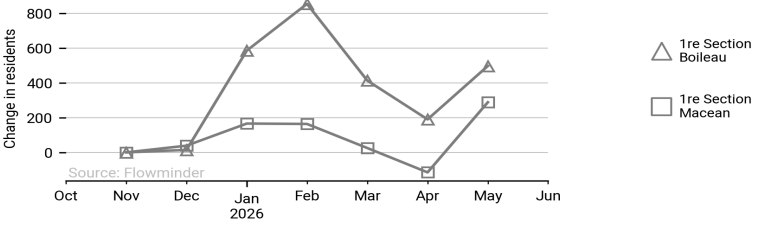


### Communal sections in South with largest estimated change in population (01 Nov 25 - 31 May 26)

Solid line: estimates. Dotted line: model.



### Largest month-to-month changes in resident population in fluctuating communal sections in South -department (01 Nov 25 - 31 May 26)



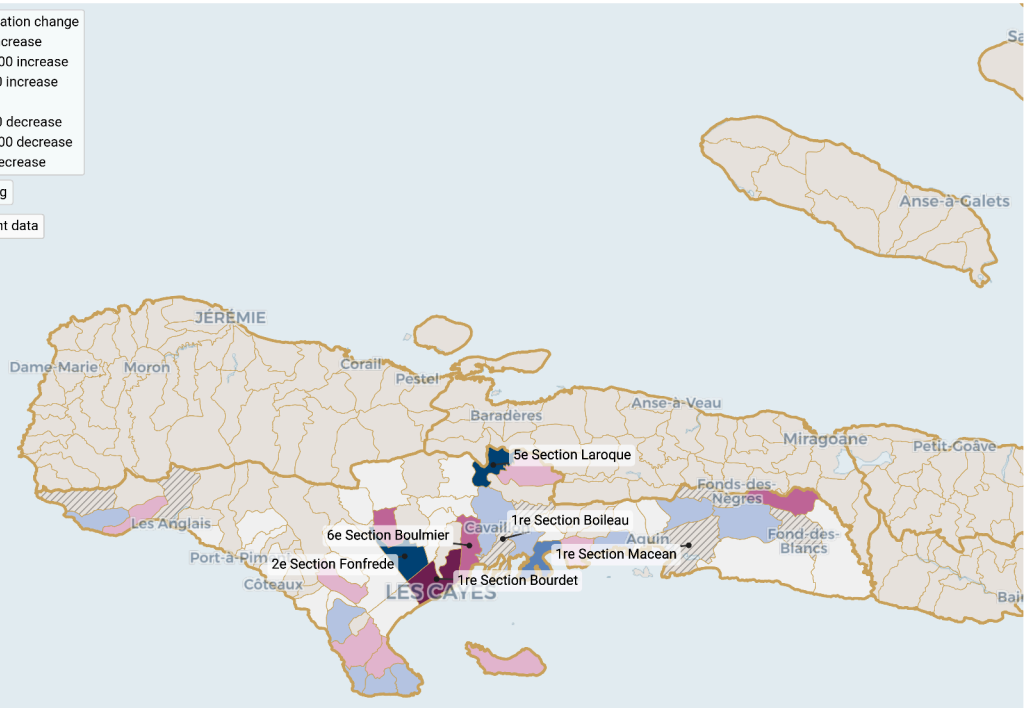
### Cumulative estimated population change per communal section in South from 1 Nov 2025 to 31 May 2026

Estimated population change

- >1,000 increase
- 500 - 1,000 increase
- 100 - 500 increase
- stable
- 100 - 500 decrease
- 500 - 1,000 decrease
- >1,000 decrease

Fluctuating

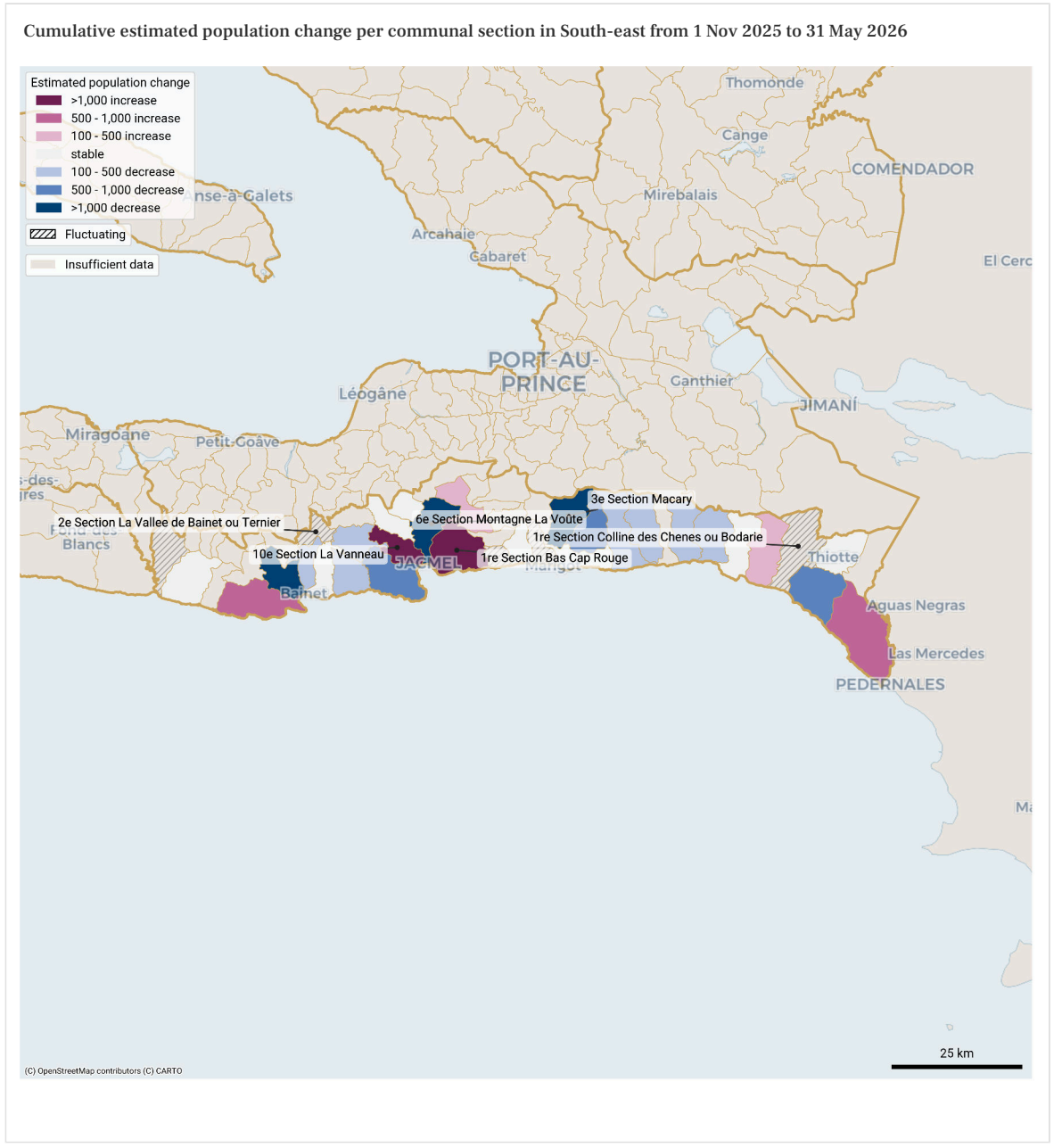
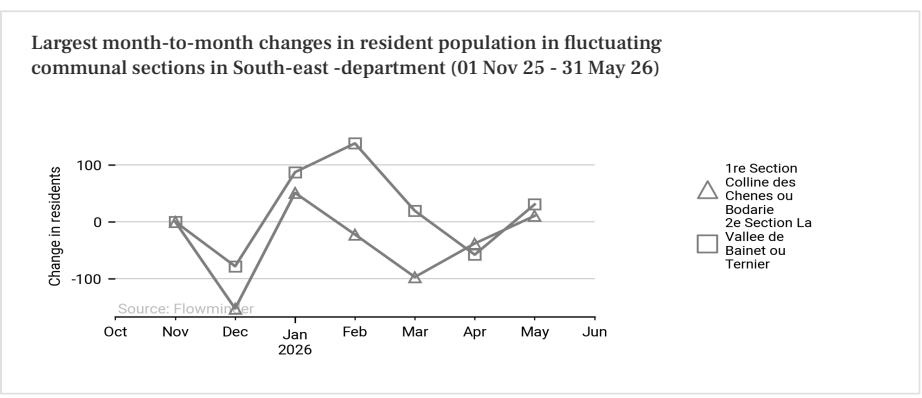
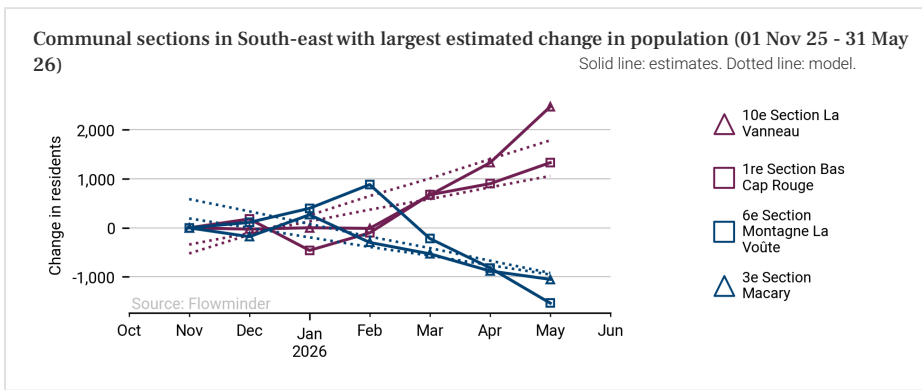
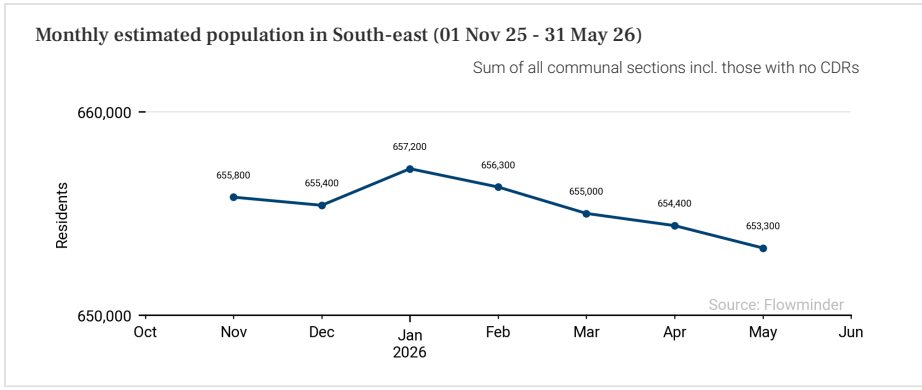
Insufficient data



(C) OpenStreetMap contributors (C) CARTO

25 km

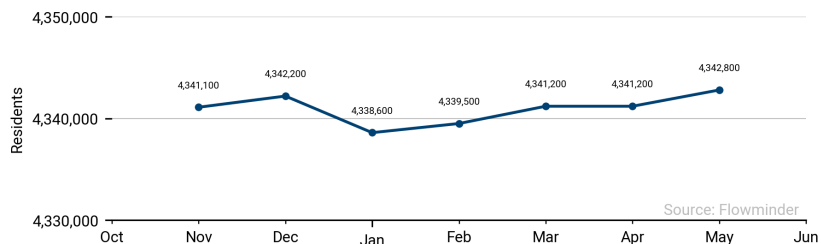
These population estimates come from Call Detail Records (CDRs) (mobile phone usage data) and other datasets for reference and adjustments. The estimates provided are not survey estimates, key informant estimates or field observations. If you are unfamiliar with this data source please read our documentation which can be found at [www.flowminder.org](http://www.flowminder.org)



These population estimates come from Call Detail Records (CDRs) (mobile phone usage data) and other datasets for reference and adjustments. The estimates provided are not survey estimates, key informant estimates or field observations. If you are unfamiliar with this data source please read our documentation which can be found at [www.flowminder.org](http://www.flowminder.org)

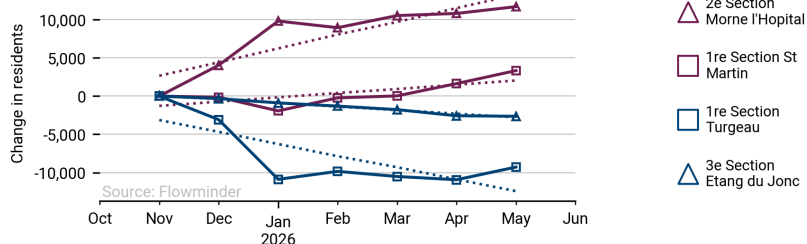
Monthly estimated population in West (01 Nov 25 - 31 May 26)

Sum of all communal sections incl. those with no CDRs

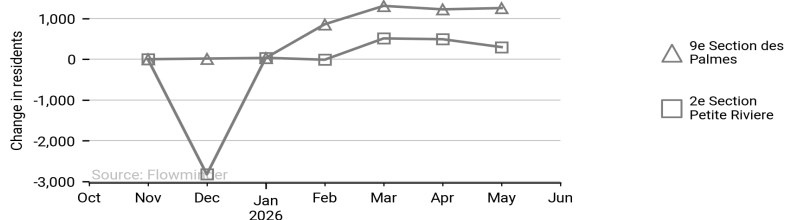


Communal sections in West with largest estimated change in population (01 Nov 25 - 31 May 26)

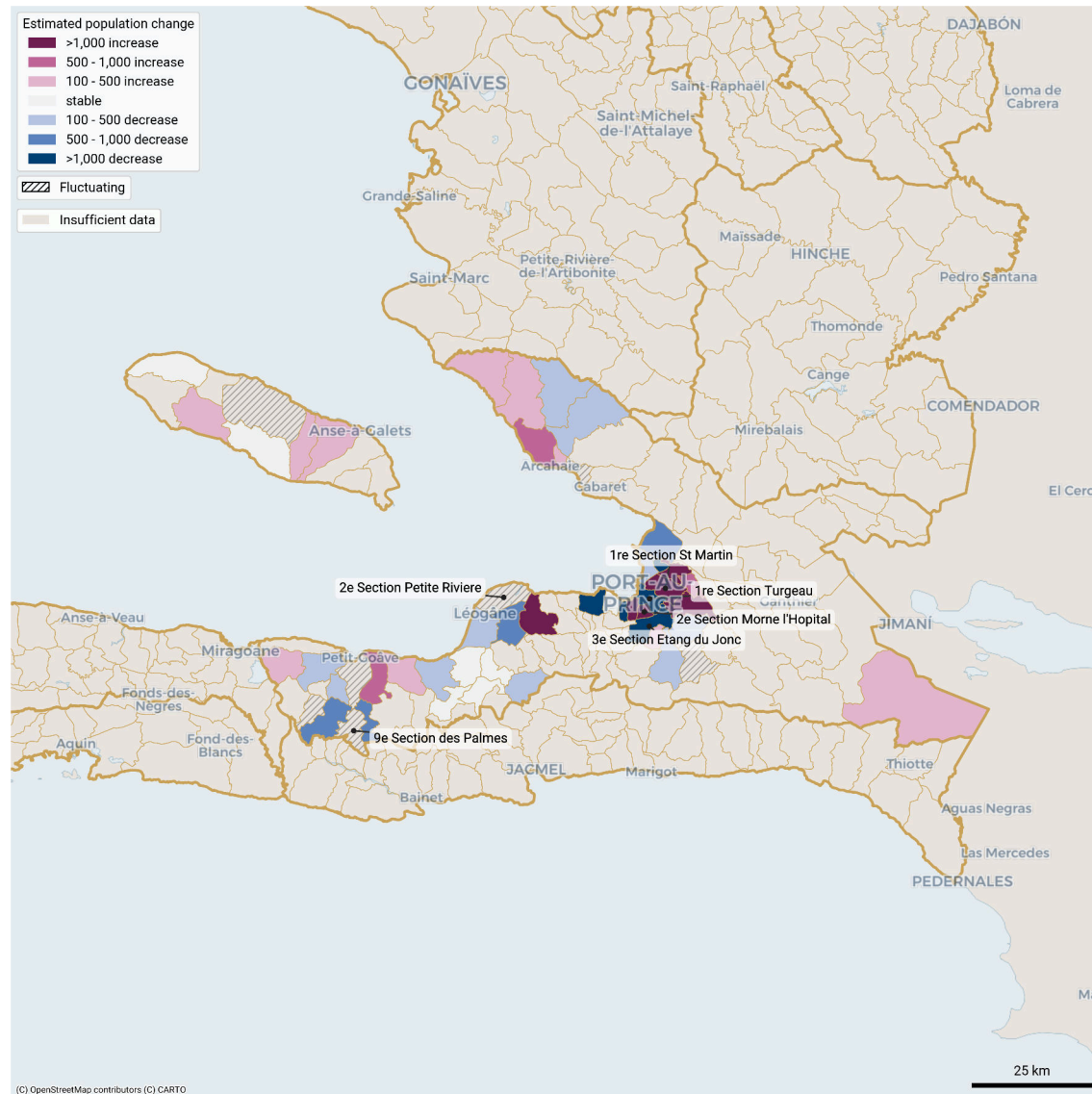
Solid line: estimates. Dotted line: model.



Largest month-to-month changes in resident population in fluctuating communal sections in West - department (01 Nov 25 - 31 May 26)



Cumulative estimated population change per communal section in West from 1 Nov 2025 to 31 May 2026



These population estimates come from Call Detail Records (CDRs) (mobile phone usage data) and other datasets for reference and adjustments. The estimates provided are not survey estimates, key informant estimates or field observations. If you are unfamiliar with this data source please read our documentation which can be found at [www.flowminder.org](http://www.flowminder.org)

List of communal sections with estimated changes in population where |total change|&gt; 100 (01 Nov 25 - 31 May 26): increasing, decreasing or fluctuating

Department	Communal section	Population estimate May 2026	Trend type in the last 12 months	Estimated change over the last 12 months	Largest estimated month-to-month change
Artibonite	1re Section Pont Tamarin	250,400	Decreasing	150	-
Artibonite	6e Section Charrette	118,600	Increasing	1,370	-
Artibonite	2e Section Bois Neuf (Saint-Marc)	64,300	Decreasing	-3,460	-
Artibonite	2e Section Fosse Naboth ou Duvalon	33,000	Decreasing	-250	-
Artibonite	1re Section Villars	29,000	Increasing	310	-
Artibonite	1re Section Deluge	19,100	Fluctuating	-	1340
Centre	1re Section Juanaria	78,100	Increasing	240	-
Grande-Anse	9e Section Fond Rouge Torbeck	33,800	Increasing	460	-
Grande-Anse	8e Section Fond Rouge Dahere	31,000	Increasing	150	-
Grande-Anse	3e Section Haute Guinaudee	21,000	Increasing	210	-
Grande-Anse	1re Section Beaumont	20,600	Fluctuating	-	< 100
Grande-Anse	1re Section Grandoit	19,700	Decreasing	-790	-
Grande-Anse	1re Section Basse Voldrogue	18,200	Decreasing	-1,570	-
Grande-Anse	1re Section Anote ou 1re Tapion	15,100	Increasing	180	-
Grande-Anse	1re Section Dejean	14,500	Decreasing	-160	-
Grande-Anse	6e Section Îles Blanches	13,900	Decreasing	-430	-
Grande-Anse	2e Section Haute Voldrogue	11,800	Increasing	430	-
Grande-Anse	2e Section Balisiers	11,600	Fluctuating	-	< 100
Grande-Anse	2e Section Espere	10,900	Decreasing	-540	-
Grande-Anse	5e Section Baliverne	10,400	Decreasing	-360	-
Grande-Anse	3e Section Grand Vincent	8,900	Increasing	450	-
Grande-Anse	3e Section Îlet a Pierre Joseph	8,300	Increasing	570	-
Grande-Anse	1re Section Bernagousse	6,500	Increasing	360	-

Department	Communal section	Population estimate May 2026	Trend type in the last 12 months	Estimated change over the last 12 months	Largest estimated month-to-month change
Grande-Anse	6e Section Les Îles Cayemittes	5,500	Increasing	290	-
Grande-Anse	3e Section Garcasse	3,800	Increasing	160	-
Grande-Anse	4e Section Mandou	3,800	Fluctuating	-	< 100
Nippes	1re Section Chalon	44,400	Increasing	330	-
Nippes	3e Section Tournade (Quartier de Changeux)	19,100	Decreasing	-320	-
Nippes	2e Section Grande-Riviere-Joly	18,600	Increasing	530	-
Nippes	1re Section Fond des Lianes	13,400	Decreasing	-150	-
Nippes	2e Section Fond-des-Negres ou Morne Brice	12,500	Increasing	100	-
Nippes	4e Section St-Michel	12,100	Increasing	270	-
Nippes	2e Section Anse aux Pins	11,000	Fluctuating	-	450
Nippes	3e Section Silegue	10,500	Decreasing	-220	-
Nippes	1re Section l'Asile ou Nan Paul	9,800	Increasing	750	-
Nippes	3e Section Fond Tortue	9,300	Increasing	120	-
Nippes	4e Section la Plaine	8,400	Fluctuating	-	230
Nippes	3e Section Lieve ou Vigny	8,000	Decreasing	-410	-
Nippes	1re Section Baconnois-Barreau	7,700	Decreasing	-700	-
Nippes	3e Section Pernerle	7,700	Decreasing	-380	-
Nippes	3e Section Arnaud (Morcou)	7,300	Fluctuating	-	2440
Nippes	1re Section Raymond	7,100	Decreasing	-500	-
Nippes	1er Section Bouzi	6,700	Fluctuating	-	100
Nippes	4e Section Bezin	1,800	Fluctuating	-	170
North	5e Section Ravine Desroches	72,200	Increasing	180	-
North	7e Section Bassin	30,500	Decreasing	-260	-

These population estimates come from Call Detail Records (CDRs) (mobile phone usage data) and other datasets for reference and adjustments. The estimates provided are not survey estimates, key informant estimates or field observations. If you are unfamiliar with this data source please read our documentation which can be found at [www.flowgeek.org](http://www.flowgeek.org)

List of communal sections with estimated changes in population where |total change|&gt; 100 (01 Nov 25 - 31 May 26): increasing, decreasing or fluctuating

Department	Communal section	Population estimate May 2026	Trend type in the last 12 months	Estimated change over the last 12 months	Largest estimated month-to-month change
North	1re Section Morne Rouge	19,400	Fluctuating	-	440
North	6e Section Bras Gauche	8,800	Decreasing	-470	-
North	5e Section la Trouble	6,500	Decreasing	-230	-
North-East	1re Section Dumas	30,800	Increasing	160	-
South	1re Section Bourdet	98,900	Increasing	1,680	-
South	3e Section Cosse	22,300	Fluctuating	-	270
South	1re Section Boileau	16,800	Fluctuating	-	570
South	2e Section Martineau	16,600	Increasing	-150	-
South	1re Section Levy Mersan	16,200	Increasing	530	-
South	2e Section Meloniere	15,200	Increasing	110	-
South	6e Section La Colline	15,100	Decreasing	-130	-
South	1re Section Île a Vache	15,100	Increasing	180	-
South	2e Section Baie Dumesle	14,300	Decreasing	-570	-
South	2e Section Anse a Drick	14,200	Decreasing	-470	-
South	2e Section Fonfrede	13,800	Decreasing	-1,190	-
South	2e Section Bellevue	13,500	Decreasing	-310	-
South	3e Section Grenodiere	12,800	Increasing	240	-
South	1re Section Macean	12,500	Fluctuating	-	400
South	1re Section Barbois	12,200	Increasing	440	-
South	1re Section Blactote	11,500	Decreasing	-190	-
South	6e Section Solon	10,800	Decreasing	-200	-
South	10e Section Guirand	10,800	Increasing	580	-
South	5e Section Laroque	10,300	Decreasing	-1,290	-

Department	Communal section	Population estimate May 2026	Trend type in the last 12 months	Estimated change over the last 12 months	Largest estimated month-to-month change
South	1re Section Tapion	8,900	Increasing	320	-
South	6e Section Boulmier	8,800	Increasing	680	-
South	8e Section Colline a Mongons	8,500	Fluctuating	-	100
South	3e Section Trichet	8,200	Decreasing	-130	-
South	4e Section Zanglais	8,100	Decreasing	-270	-
South	2e Section Dumont	8,000	Increasing	-180	-
South	4e Section Mare Henri	7,500	Increasing	180	-
South	9e Section Fond des Blancs	7,400	Fluctuating	-	390
South	2e Section Debouchette	7,100	Decreasing	-280	-
South	3e Section Loby	5,700	Fluctuating	-	150
South	4e Section Dalmette	3,600	Increasing	220	-
South-East	1re Section Bas Cap Rouge	86,700	Increasing	1,330	-
South-East	6e Section Montagne La Voûte	44,700	Decreasing	-1,540	-
South-East	1re Section Boucan Guillaume	24,600	Increasing	540	-
South-East	1re Section Corail Soult	19,500	Fluctuating	-	120
South-East	11e Section La Montagne	18,700	Decreasing	-580	-
South-East	9e Section Bas des Gris Gris	18,000	Increasing	560	-
South-East	1re Section Colline des Chenes ou Bodarie	16,800	Fluctuating	-	200
South-East	5e Section Bel Air	15,800	Decreasing	-140	-
South-East	3e Section Macary	15,700	Decreasing	-1,050	-
South-East	6e Section Jamais Vu	15,300	Fluctuating	-	< 100
South-East	1re Section La Vallee de Jacmel ou Muzac	14,900	Decreasing	-150	-
South-East	4e Section Fond Jean Noël	14,600	Decreasing	-910	-

List of communal sections with estimated changes in population where |total change|&gt; 100 (01 Nov 25 - 31 May 26): increasing, decreasing or fluctuating

Department	Communal section	Population estimate May 2026	Trend type in the last 12 months	Estimated change over the last 12 months	Largest estimated month-to-month change
South-East	2e Section La Vallee de Bainet ou Ternier	13,200	Fluctuating	-	170
South-East	5e Section Bas de Grandou	12,900	Decreasing	-1,050	-
South-East	7e Section Mapou	12,800	Increasing	160	-
South-East	10e Section La Vanneau	12,200	Increasing	2,470	-
South-East	1re Section Ravine Normande	12,200	Fluctuating	-	160
South-East	2e Section Mabriole	12,200	Decreasing	-200	-
South-East	3e Section Cochon Gras	11,700	Increasing	130	-
South-East	1re Section Bresilienne	10,600	Decreasing	-190	-
South-East	4e Section Corail Lamothe	10,300	Decreasing	-150	-
South-East	1re Section Bais d'Orange	9,800	Decreasing	-270	-
South-East	3e Section La Vallee de Bainet	8,800	Increasing	-130	-
South-East	2e Section Pot de Chambre	8,600	Decreasing	-570	-
West	1re Section St Martin	499,600	Increasing	3,350	-
West	1re Section Turgeau	479,700	Decreasing	-9,280	-
West	3e Section Martissant	283,800	Increasing	1,030	-
West	5e Section Bellevue Chardonniere	280,300	Increasing	2,730	-
West	11e Section Riviere Froide	215,300	Decreasing	-1,120	-
West	2e Section Morne l'Hopital	179,200	Increasing	11,720	-
West	11e Section Ravine Seche	131,900	Fluctuating	-	490
West	3e Section Etang du Jonc	131,300	Decreasing	-2,630	-
West	1re Section Dessources	125,100	Decreasing	-450	-
West	3e Section Bellevue	122,100	Increasing	2,280	-
West	3e Section des Vases	109,800	Increasing	900	-

Department	Communal section	Population estimate May 2026	Trend type in the last 12 months	Estimated change over the last 12 months	Largest estimated month-to-month change
West	1re Section des Varreux (Croix-Des-Bouquets)	78,500	Decreasing	-750	-
West	1re Section Tete-a-Boeuf	57,000	Increasing	320	-
West	7e Section Gerard	55,900	Decreasing	-230	-
West	2e Section Petite Riviere	55,500	Fluctuating	-	2860
West	1re Section Fonds-Verrettes	52,500	Increasing	200	-
West	9e Section Bizoton	52,300	Decreasing	-1,590	-
West	2e Section des Varreux (Cite Soleil)	43,400	Increasing	-320	-
West	3e Section Grande Rivere	39,800	Decreasing	-610	-
West	4e Section Bellevue	37,200	Increasing	910	-
West	2e Section Petite Source	35,900	Increasing	190	-
West	1re Section Bino	34,800	Decreasing	-230	-
West	1re Section des Varreux (Cite Soleil)	34,600	Decreasing	-1,290	-
West	3e Section Sourcailles	29,400	Decreasing	-200	-
West	1re Section Montagne Noire	26,200	Increasing	210	-
West	12e Section des Fourques	22,900	Increasing	640	-
West	3e Section Petit Boucan	22,000	Increasing	1,540	-
West	2e Section Boucassin	22,000	Fluctuating	-	400
West	4e Section Bellevue la Montagne	13,800	Increasing	-210	-
West	10e Section Fond d'Oie	11,100	Decreasing	-250	-
West	6e Section Matheux	9,100	Decreasing	-460	-
West	2e Section Delatre	8,700	Increasing	170	-
West	8e Section des Platons	8,300	Decreasing	-740	-
West	5e Section Delices	7,600	Decreasing	-170	-

These population estimates come from Call Detail Records (CDRs) (mobile phone usage data) and other datasets for reference and adjustments. The estimates provided are not survey estimates, key informant estimates or field observations. If you are unfamiliar with this data source please read our documentation which can be found at [www.flowgeek.org](http://www.flowgeek.org)

List of communal sections with estimated changes in population where |total change| > 100 (01 Nov 25 - 31 May 26): increasing, decreasing or fluctuating

Department	Communal section	Population estimate May 2026	Trend type in the last 12 months	Estimated change over the last 12 months	Largest estimated month-to-month change
West	4e Section Montrouis	7,500	Increasing	380	-
West	9e Section des Palmes	6,700	Fluctuating	-	830
West	7e Section des Platons	6,300	Decreasing	-180	-
West	5e Section Grand Fond	5,700	Fluctuating	-	530
West	2e Section Fonds Baptiste	4,800	Increasing	420	-
West	3e Section Grande Source	4,700	Increasing	190	-
West	2e Section Grand Vide	4,500	Increasing	320	-
West	4e Section Grand Lagon	3,900	Fluctuating	-	< 100
West	1re Section Boucassin (Archaïe)	3,700	Increasing	210	-
West	6e Section Trou Canari	3,100	Fluctuating	-	< 100
West	10e Section des Palmes	1,800	Decreasing	-870	-

Department	Communal section	Population estimate May 2026	Trend type in the last 12 months	Estimated change over the last 12 months	Largest estimated month-to-month change
------------	------------------	------------------------------	----------------------------------	--	---

### Authors And Funders

This report was authored by the Flowminder Foundation.

This work was made possible by funding from the UK Foreign, Commonwealth and Development Office (FCDO).

### Acknowledgements

This study was made possible thanks to the anonymised (aggregated) Call Detail Records provided by a mobile network operator in Haiti.

### How to use this report

We provide population estimates that take into account population movements within Haiti, per month and per communal section. We report the average decreasing/increasing trends for each communal section for which we have data. However, it is important to note that multiple trends can be observed over the reported 12-month period. The current crisis has led to large population movements, particularly of internally displaced people (e.g. [IDP movement](#)), which can result in population statistics becoming outdated over a few months, and therefore impairing preparedness efforts (e.g. hazard population exposure estimation, needs assessment, service and contingency planning).

### Indicators presented

**Modelled change (trend):** the predicted population change for the reporting period from all 12 monthly estimates, which smoothes out monthly variations (linear regression).

**Estimated change:** the difference in the estimated population between the first and last months of the 12 month reporting period, which does not reflect any monthly variation within.

For communal sections with fewer than 10 months of resident estimates during the reporting period, we do not make a trend classification (insufficient data). For monthly population estimates at the department level, we carry forward the latest estimate to fill missing months in a communal section so that the aggregated changes at the department level are only based on observed CDR-derived mobility.

For communal sections with fast changing populations, we categorised them as 'increasing', 'decreasing', 'stable', when there is little to no change; or as 'fluctuating' when large month-to-month changes prevented us from detecting a trend.

### Report's data

This report uses our v4.0 dataset ([documentation](#), [release notes](#)), available at <https://haiti.mobility-dashboard.org>.

*This report and its contents may only be shared with attribution to the Flowminder Foundation and Digicel Haiti. Adaptation is permitted as long as the changes are indicated and the Flowminder Foundation and Digicel Haiti are cited. Use of the report and its contents is limited to humanitarian and development purposes.*

*Disclaimer of Warranties and Limitation of Liability: To the extent possible, Flowminder and Digicel offer this report and its contents as-is and as-available, and make no representations or warranties of any kind concerning this report and its contents, whether express, implied, statutory, or other. This includes, without limitation, warranties of title, merchantability, fitness for a particular purpose, non-infringement, absence of latent or other defects, accuracy, or the presence or absence of errors, whether or not known or discoverable.*

*To the extent possible, in no event will Flowminder or Digicel be liable on any legal theory (including, without limitation, negligence) or otherwise for any direct, special, indirect, incidental, consequential, punitive, exemplary, or other losses, costs, expenses, or damages arising out of the use of the report or its contents, even if Flowminder or Digicel have been advised of the possibility of such losses, costs, expenses, or damages. The disclaimer of warranties and limitation of liability provided above shall be interpreted in a manner that, to the extent possible, most closely approximates an absolute disclaimer and waiver of all liability.*

### Data privacy & governance

No personal data, such as an individual's identity, demographics, location, contacts or movements, is made available to the government or any other third party at any time. All results produced by Flowminder are aggregated results (for example, subscriber density in a given municipality), which means that they do not contain any information about individual subscribers.

This data is fully anonymised. This approach complies with the European Union's General Data Protection Regulation (EU GDPR2016/679). Data is processed on a server installed behind the mobile network operator's firewall in Haiti, and no personal data leaves the operator's premises.

### Data considerations

The estimates shown are our best current assessment of movements. However, there are a number of uncertainties. The information should be interpreted together with other available evidence.

For more information about our methods, please read our Haiti Mobility Data Indicators documentation on residents and relocation at [here](#).

### Data Sources

Pseudonymised Call Detail Records: Digicel Haiti

CDR-based data products: Flowminder

Phone survey data: [HT PS 2023](#)

Field survey data: [MSNA 2022](#) and [MSNA 2024](#)

Population estimates: [UN data](#); IHSI 2015; and IHSI 2020.

**NOTE:** The Flowminder-Digicel pipeline was interrupted from June to October 2025, with no data currently available for that period.

**NOTE:** Due to partial and low population coverage of the data used by Flowminder, the estimates shown in this report may contain biases. Particularly for the departments Artibonite, Centre and North-East and North-West, data is available only for a small number of sections.

The following citation is required when using the data and information included in this report:

**Flowminder Foundation, Jul 2026: Preparedness report, Mobility situation in Haiti from 01 Nov 2025 to 31 May 2026**

For more information on the terms and conditions of Flowminder's reports and information products, please visit [flowminder.org](https://flowminder.org)