

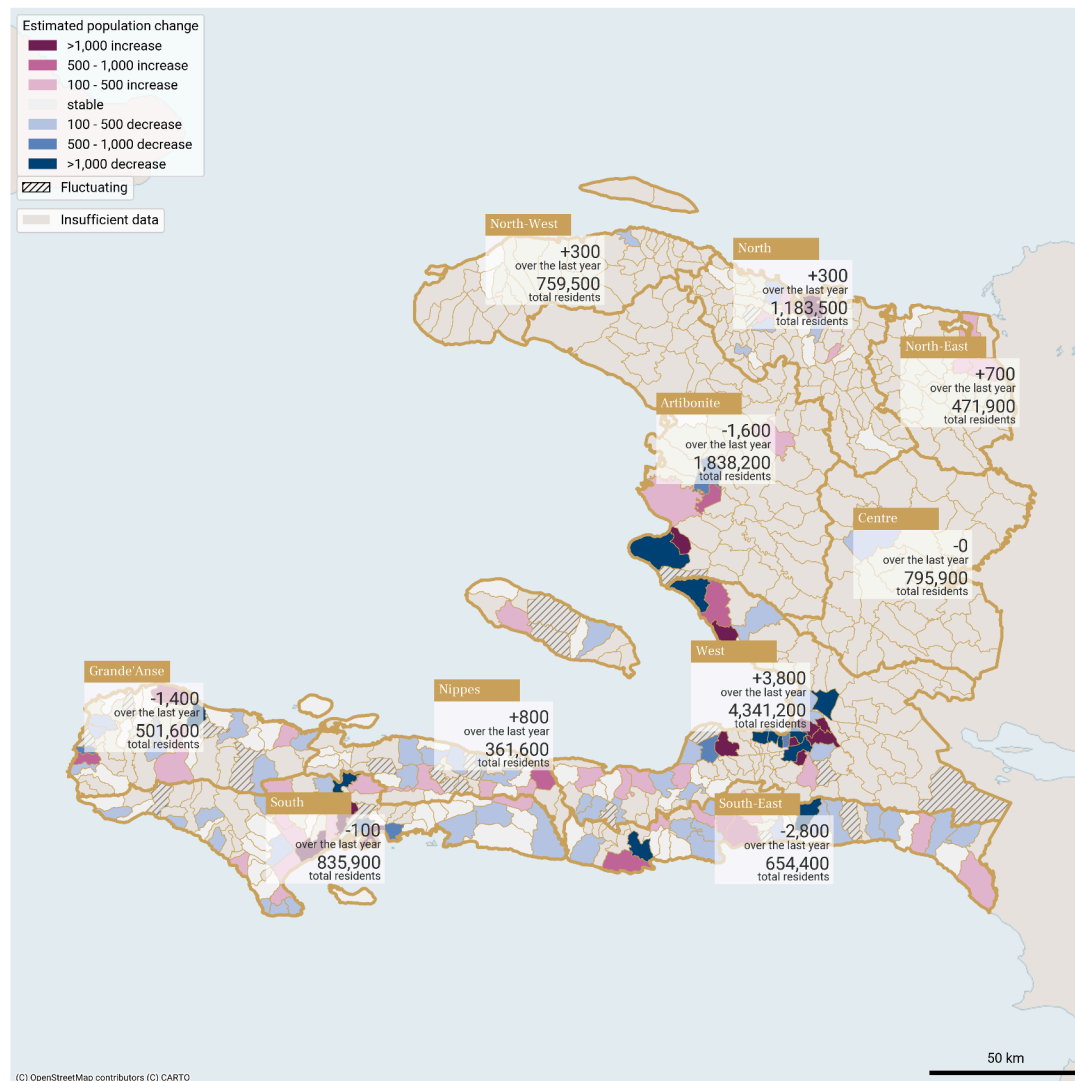
Communal sections with the largest estimated change in population between 01 May 25 - 30 Apr 26

Department	Communal section	Population estimate Apr 2026	Trend type in the last 12 months	Estimated change over the last 12 months
West	2e Section Morne l'Hopital	178,300	Increasing	11,250
West	2e Section des Varreux (Croix-Des-Bouquets)	127,000	Decreasing	-5,170
West	1re Section St Martin	497,900	Increasing	4,310
West	1re Section Turgeau	478,000	Decreasing	-3,170
West	3e Section Etang du Jonc	131,400	Decreasing	-2,620

Key observations for the period 01 May 25 - 30 Apr 26

- The Flowminder-Digicel pipeline was interrupted from June to October 2025, with no data currently available for that period
- Overall, most communal sections show stable population estimates or minor changes (± 500 people) between May 2025 and April 2026.
- In the Port-au-Prince Metropolitan Area (ZMPAP), the population of 2e Section Morne l'Hôpital (Port-au-Prince) increased by +11,250 people between Nov 2025 and April 2026. Population also increased in 1re Section St Martin (Delmas) (+4,310). In contrast, the population of 2e Section des Varreux (Croix-Des-Bouquets) decreased (-5,170). 1re Section Turgeau (Port-au-Prince) experienced a sharp rise of over 6,000 people in November 2025, followed by a comparable rebound by January 2026. Both decreases are potentially due to armed attacks ([ETI 83](#))
- In South East, the population declined by 2,800 over the year, with the largest drops in 5e Section Bas de Grandou (Bainet) (-1,560) and in 3e Section Macary (Marigot) (-1,140).
- In Artibonite, 2e Section Bois Neuf (Saint-Marc) increased by over 2,000 people in November 2025 followed by steady decrease over consecutive months, while 1re Section Deluge (Saint-Marc) declined by -2,140.
- In Grand'Anse, an additional decrease was observed in 1re Section Basse Voldrogue (Jérémie) (-1,280) during the observation period.
- The largest population increases outside ZMPAP were recorded in 6e Section Charrette (Saint-Marc, Artibonite) (+2,220), 1re Section Bourdet (Les Cayes, South) (+2,090), and 2e 1re Section Morne Rouge (Plaine du Nord, North) (+1,740).

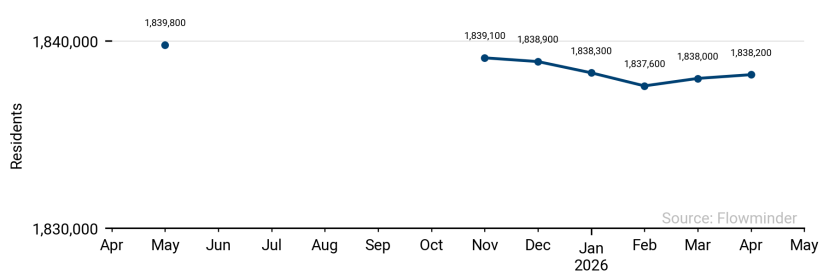
Cumulative estimated population change by departments and communal sections between 1 May 2025 and 30 Apr 2026



These population estimates come from Call Detail Records (CDRs) (mobile phone usage data) and other datasets for reference and adjustments. The estimates provided are not survey estimates, key informant estimates or field observations. If you are unfamiliar with this data source please read our documentation which can be found at www.flowgeek.org

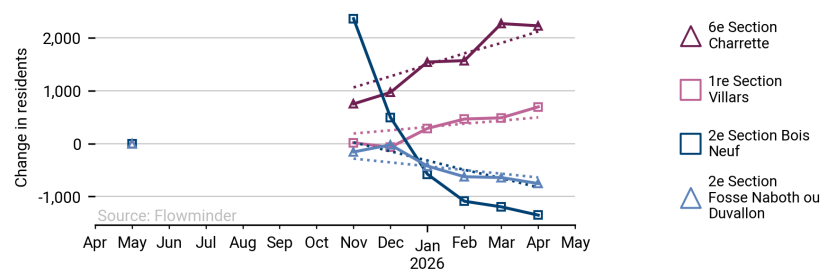
Monthly estimated population in Artibonite (01 May 25 - 30 Apr 26)

Sum of all communal sections incl. those with no CDRs

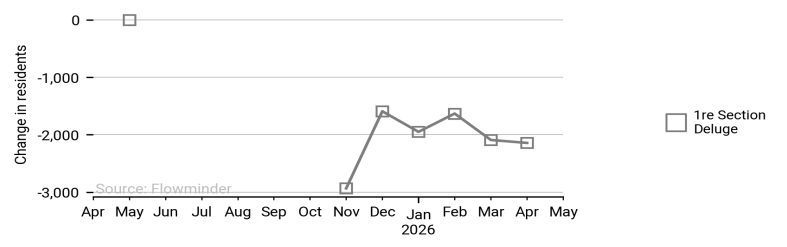


Communal sections in Artibonite with largest estimated change in population (01 May 25 - 30 Apr 26)

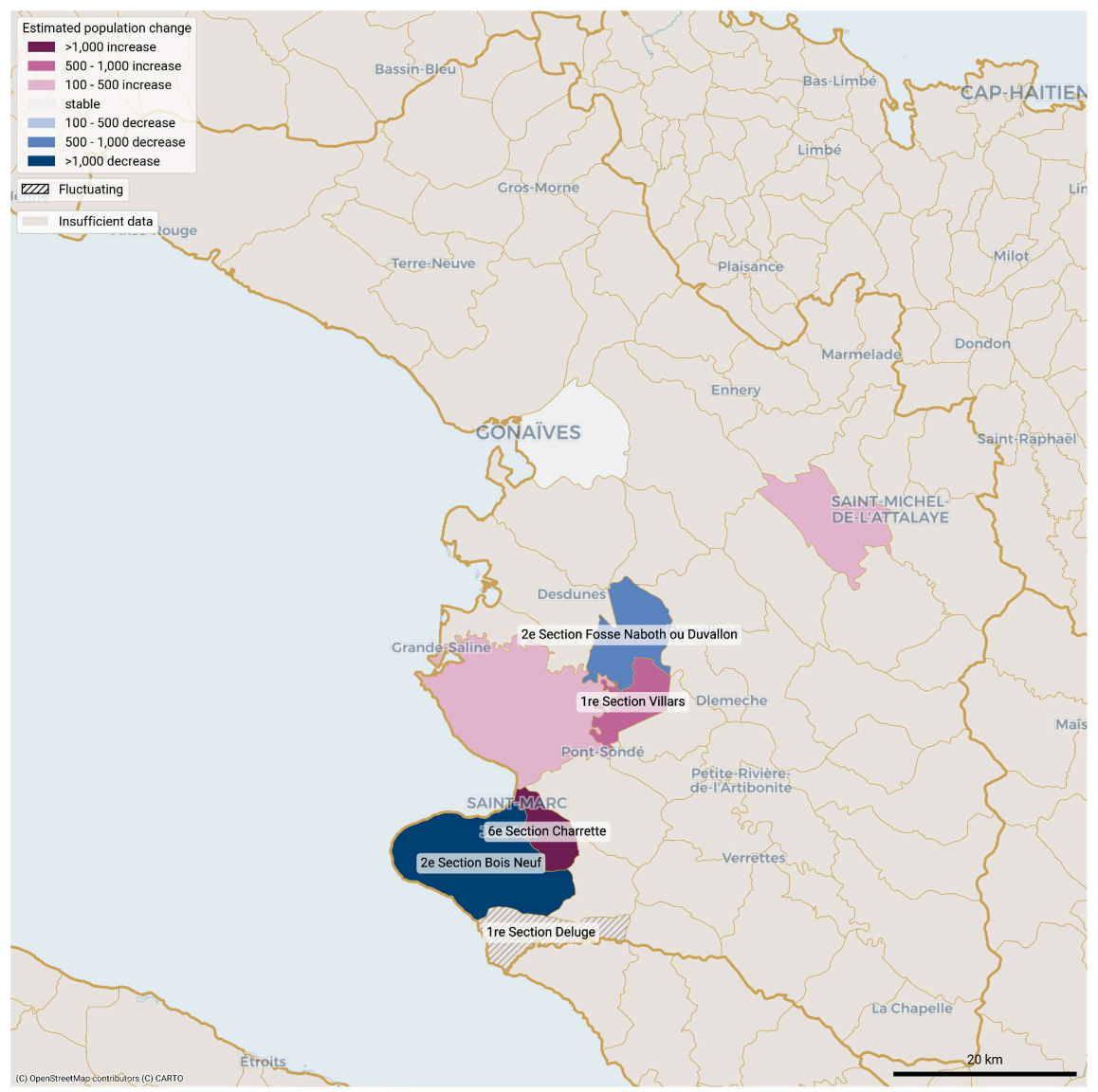
Solid line: estimates. Dotted line: model.



Largest month-to-month changes in resident population in fluctuating communal sections in Artibonite -department (01 May 25 - 30 Apr 26)



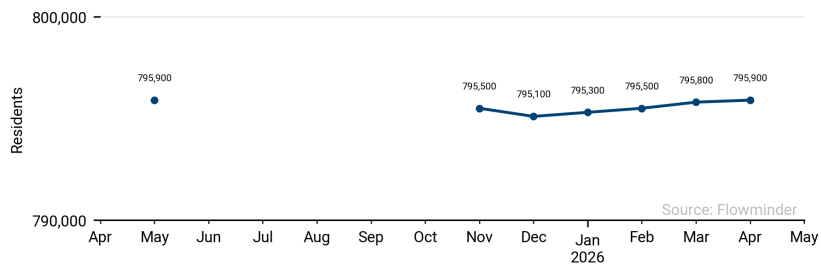
Cumulative estimated population change per communal section in Artibonite from 1 May 2025 to 30 Apr 2026



These population estimates come from Call Detail Records (CDRs) (mobile phone usage data) and other datasets for reference and adjustments. The estimates provided are not survey estimates, key informant estimates or field observations. If you are unfamiliar with this data source please read our documentation which can be found at www.flowminder.org

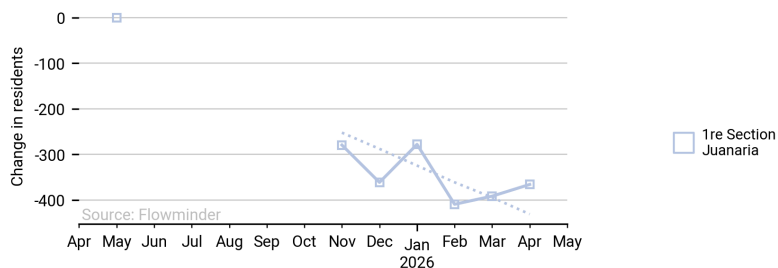
Monthly estimated population in Centre (01 May 25 - 30 Apr 26)

Sum of all communal sections incl. those with no CDRs

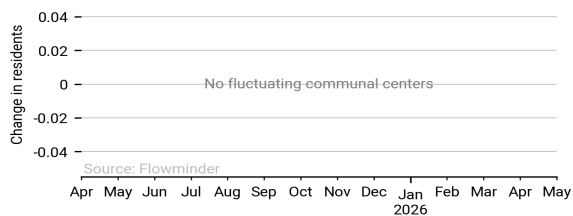


Communal sections in Centre with largest estimated change in population (01 May 25 - 30 Apr 26)

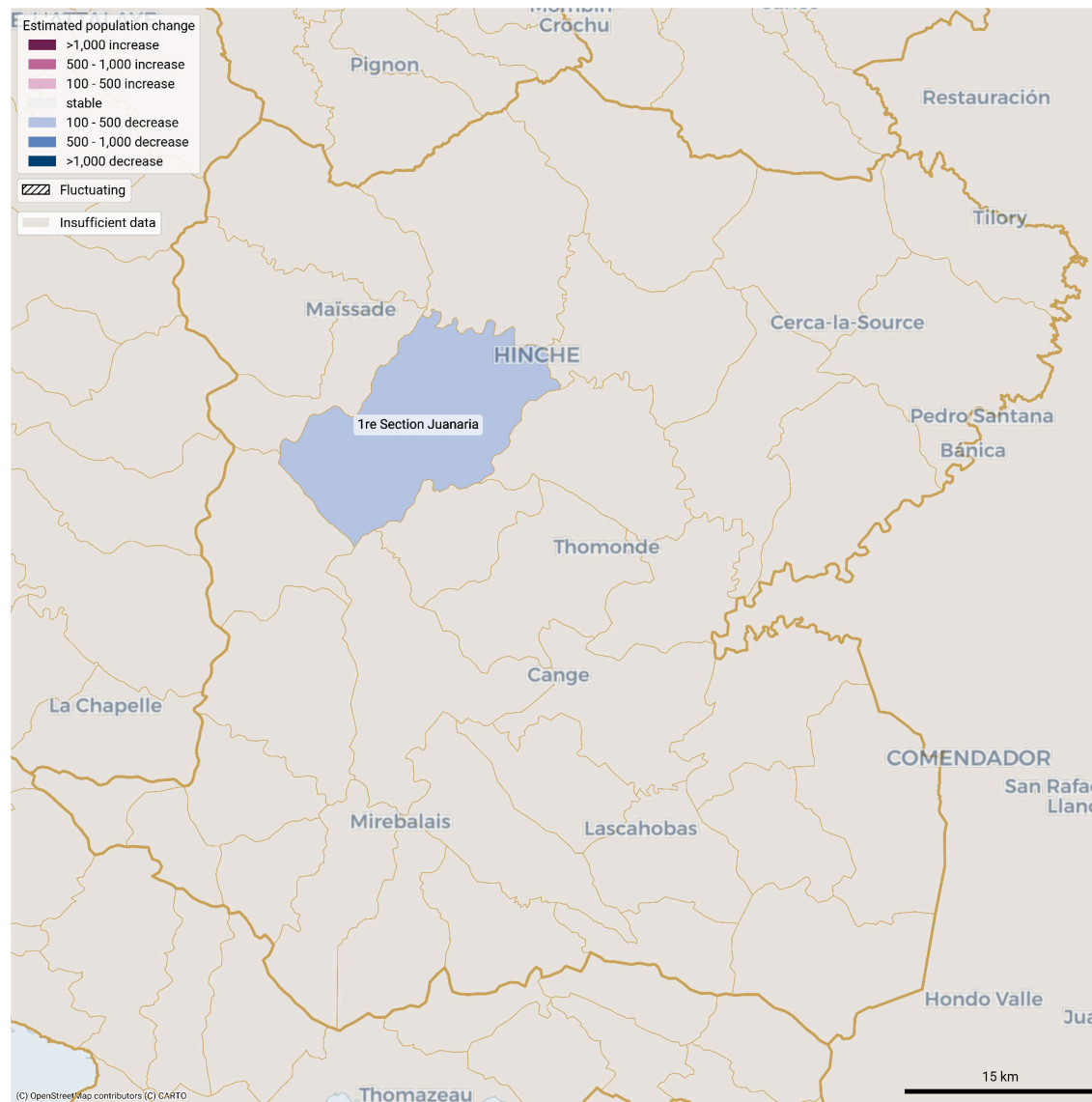
Solid line: estimates. Dotted line: model.



Largest month-to-month changes in resident population in fluctuating communal sections in Centre - department (01 May 25 - 30 Apr 26)



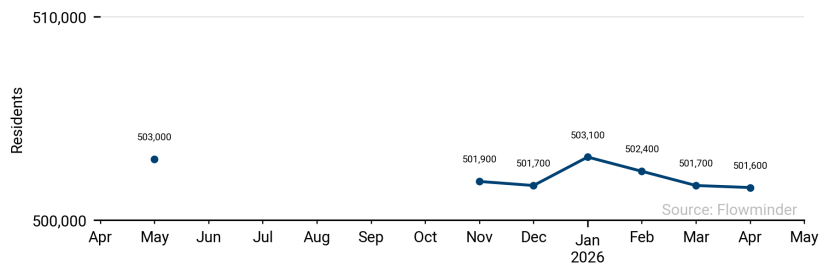
Cumulative estimated population change per communal section in Centre from 1 May 2025 to 30 Apr 2026



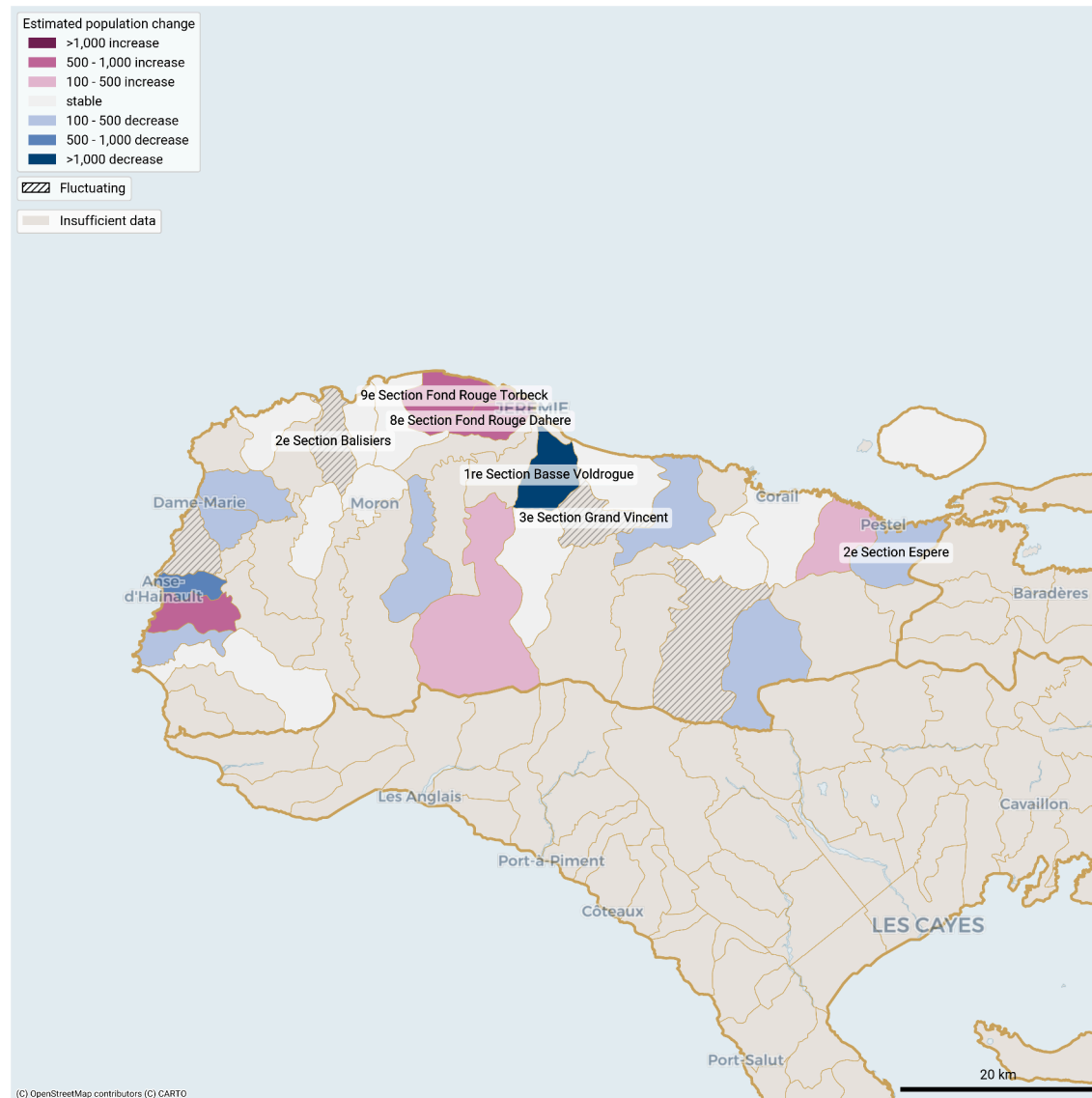
These population estimates come from Call Detail Records (CDRs) (mobile phone usage data) and other datasets for reference and adjustments. The estimates provided are not survey estimates, key informant estimates or field observations. If you are unfamiliar with this data source please read our documentation which can be found at www.flowminder.org

Monthly estimated population in Grande'Anse (01 May 25 - 30 Apr 26)

Sum of all communal sections incl. those with no CDRs

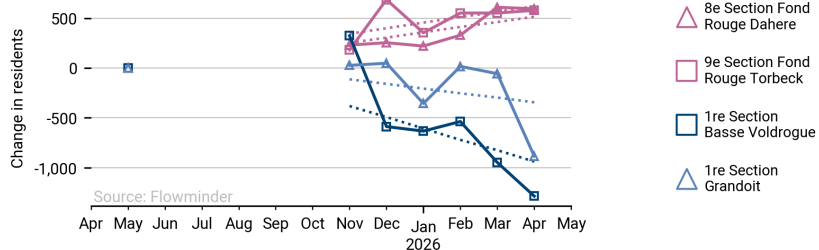


Cumulative estimated population change per communal section in Grande'Anse from 1 May 2025 to 30 Apr 2026

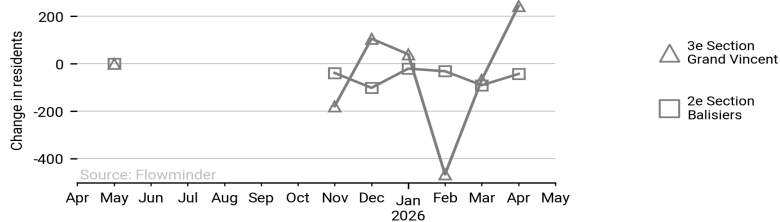


Communal sections in Grande'Anse with largest estimated change in population (01 May 25 - 30 Apr 26)

Solid line: estimates. Dotted line: model.



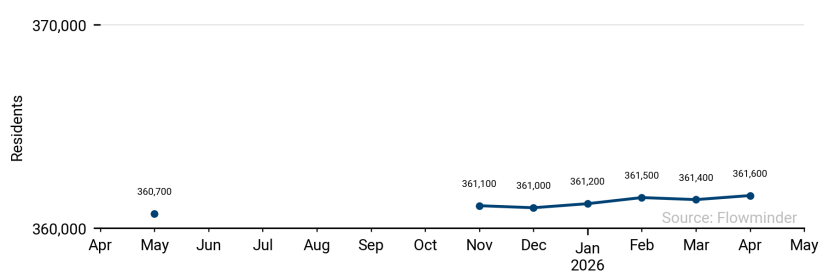
Largest month-to-month changes in resident population in fluctuating communal sections in Grande'Anse -department (01 May 25 - 30 Apr 26)



These population estimates come from Call Detail Records (CDRs) (mobile phone usage data) and other datasets for reference and adjustments. The estimates provided are not survey estimates, key informant estimates or field observations. If you are unfamiliar with this data source please read our documentation which can be found at www.flowminder.org

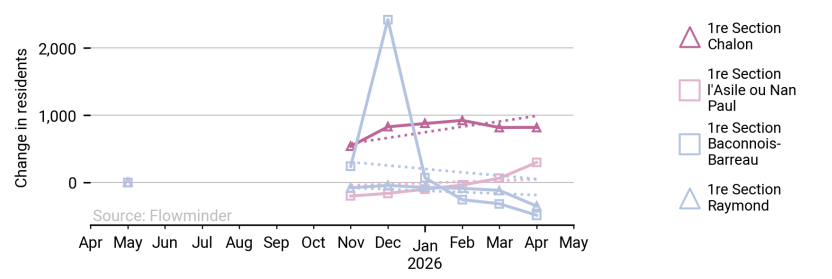
Monthly estimated population in Nippes (01 May 25 - 30 Apr 26)

Sum of all communal sections incl. those with no CDRs

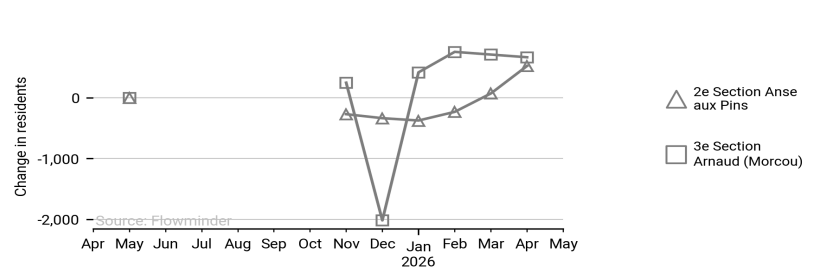


Communal sections in Nippes with largest estimated change in population (01 May 25 - 30 Apr 26)

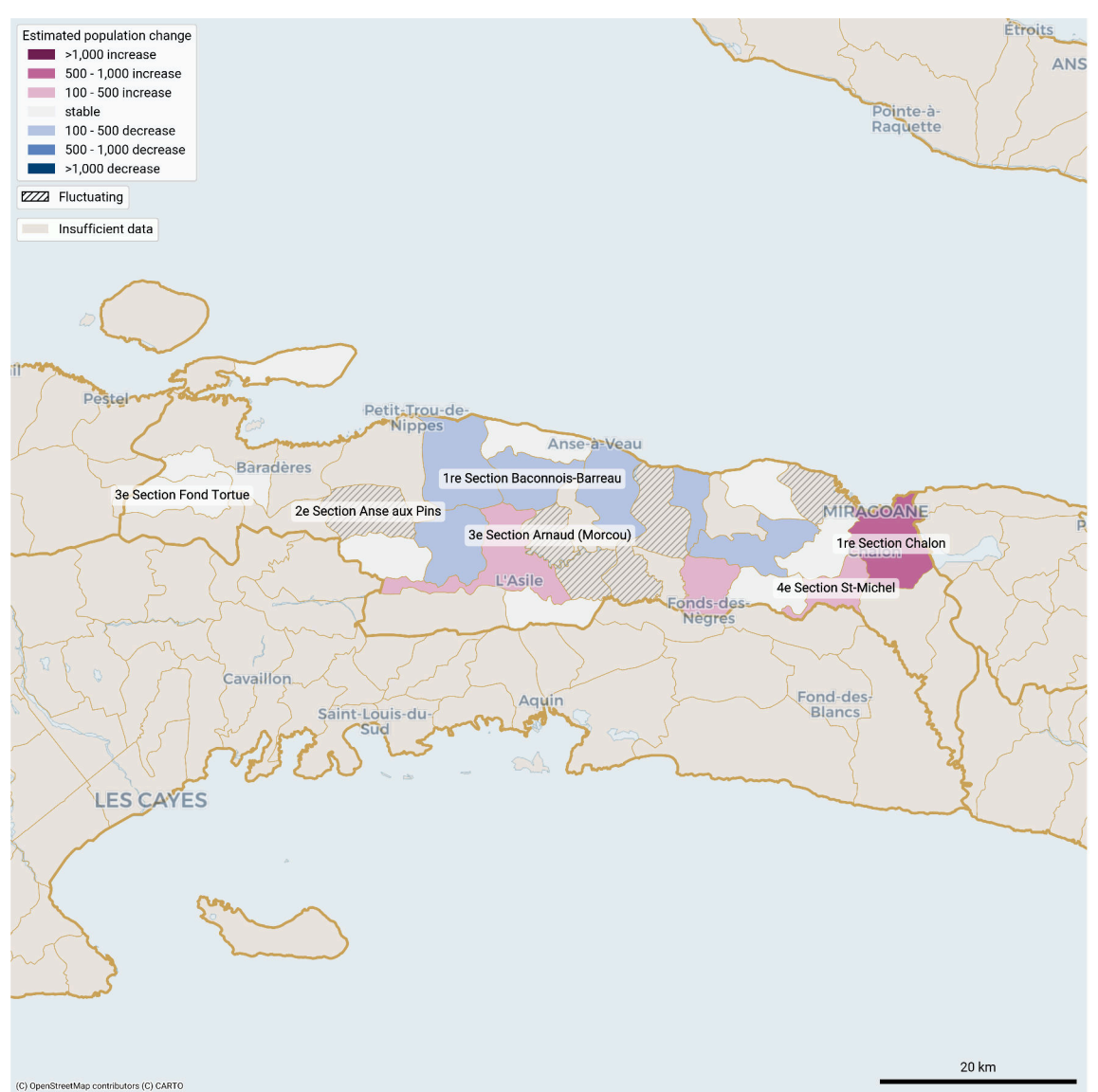
Solid line: estimates. Dotted line: model.



Largest month-to-month changes in resident population in fluctuating communal sections in Nippes -department (01 May 25 - 30 Apr 26)



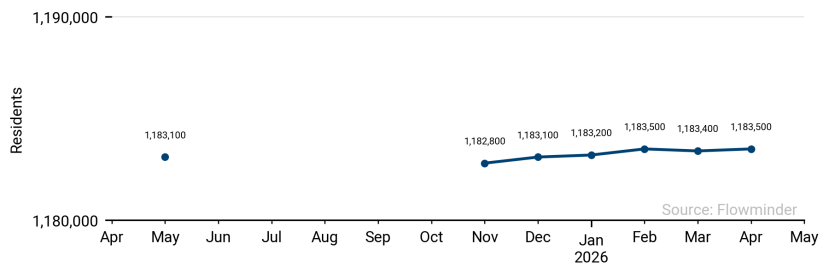
Cumulative estimated population change per communal section in Nippes from 1 May 2025 to 30 Apr 2026



These population estimates come from Call Detail Records (CDRs) (mobile phone usage data) and other datasets for reference and adjustments. The estimates provided are not survey estimates, key informant estimates or field observations. If you are unfamiliar with this data source please read our documentation which can be found at www.flowminder.org

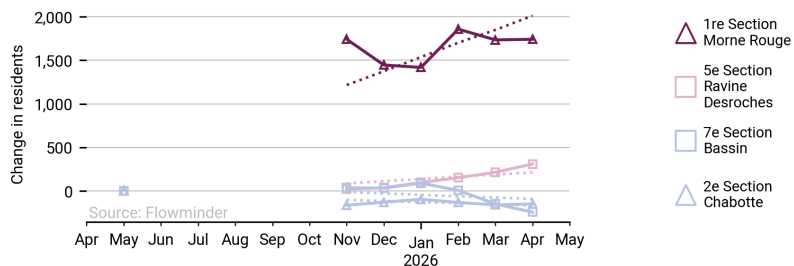
Monthly estimated population in North (01 May 25 - 30 Apr 26)

Sum of all communal sections incl. those with no CDRs

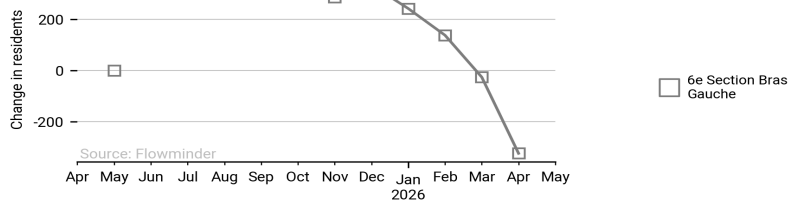


Communal sections in North with largest estimated change in population (01 May 25 - 30 Apr 26)

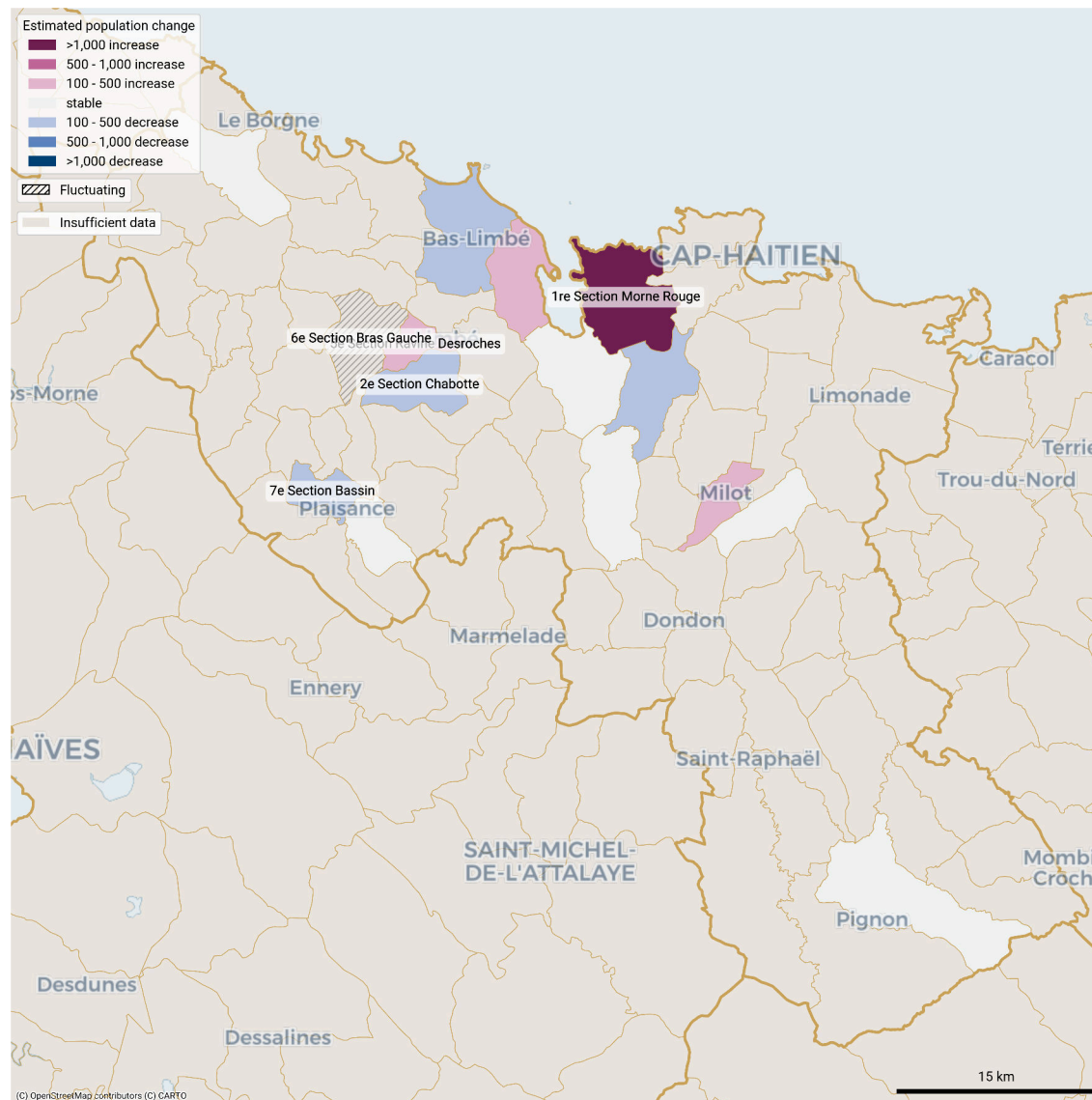
Solid line: estimates. Dotted line: model.



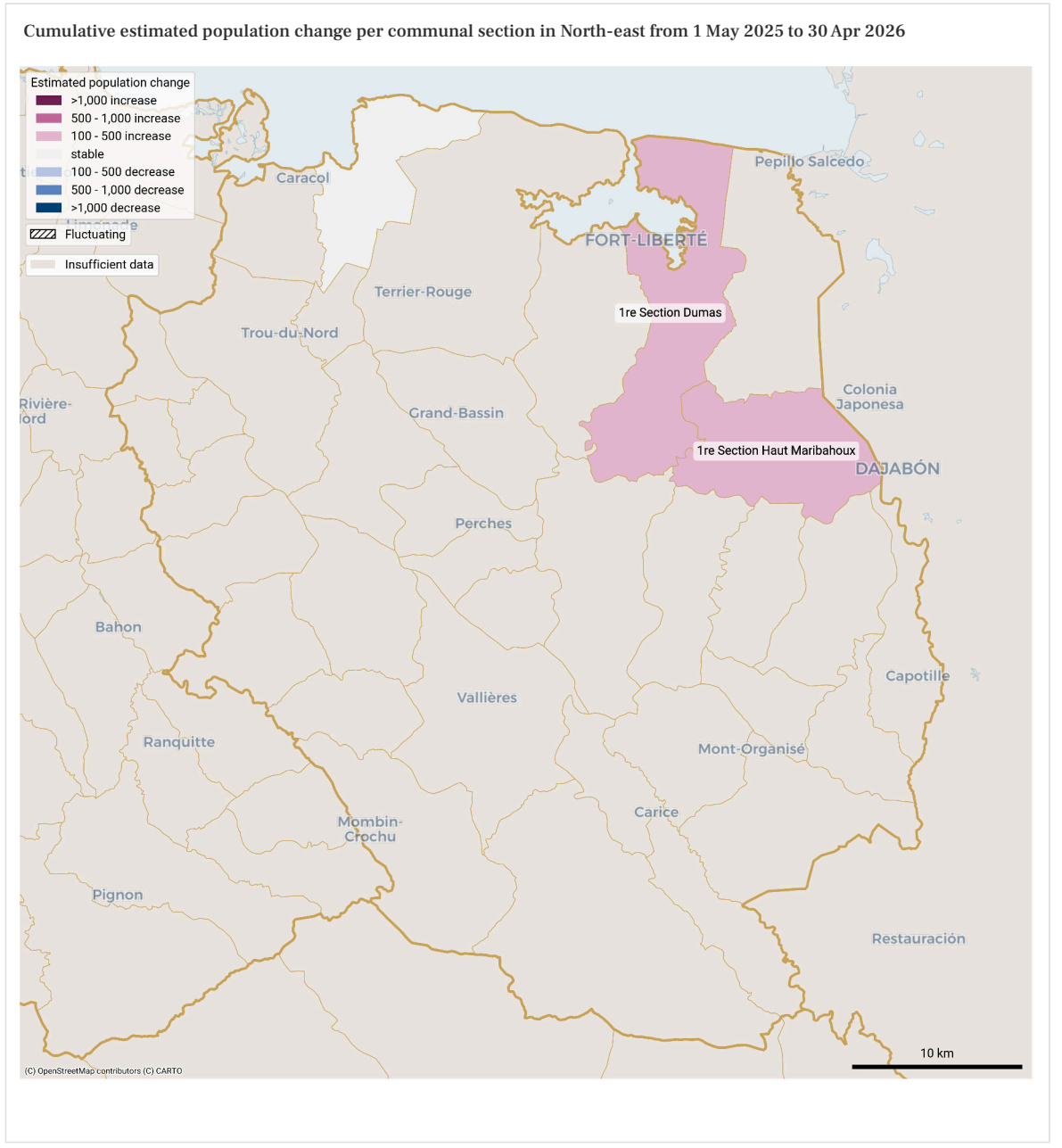
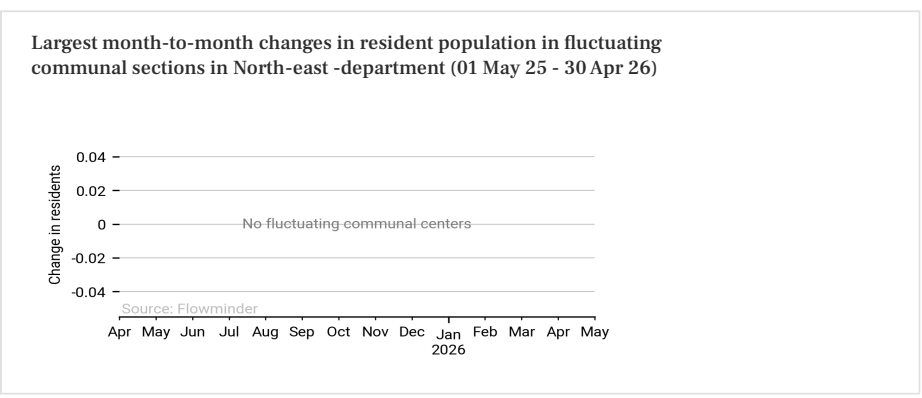
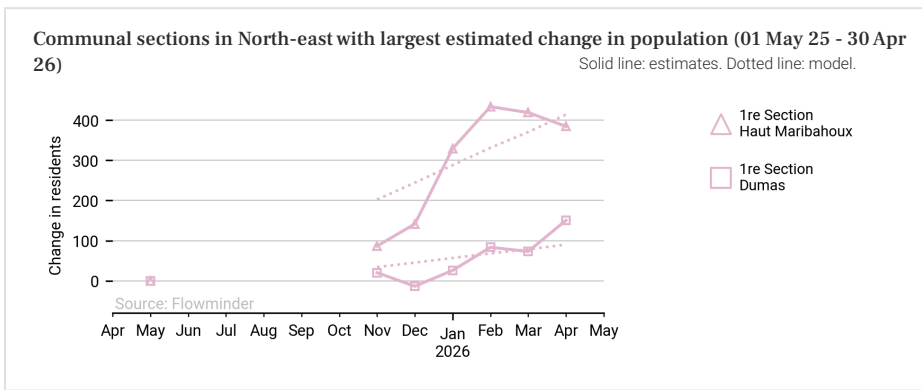
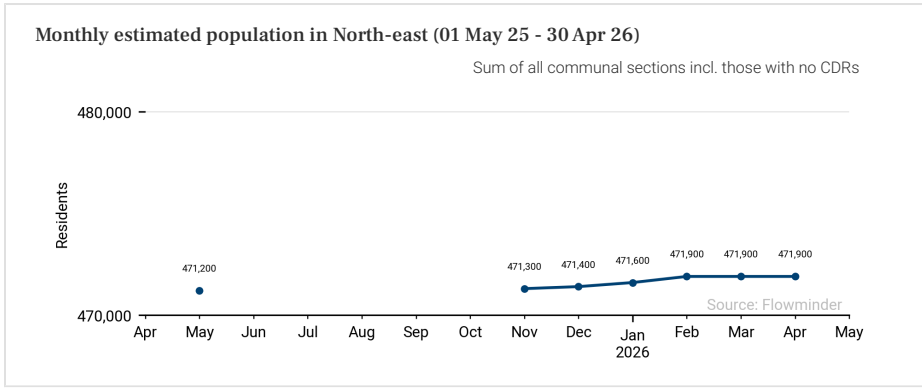
Largest month-to-month changes in resident population in fluctuating communal sections in North -department (01 May 25 - 30 Apr 26)



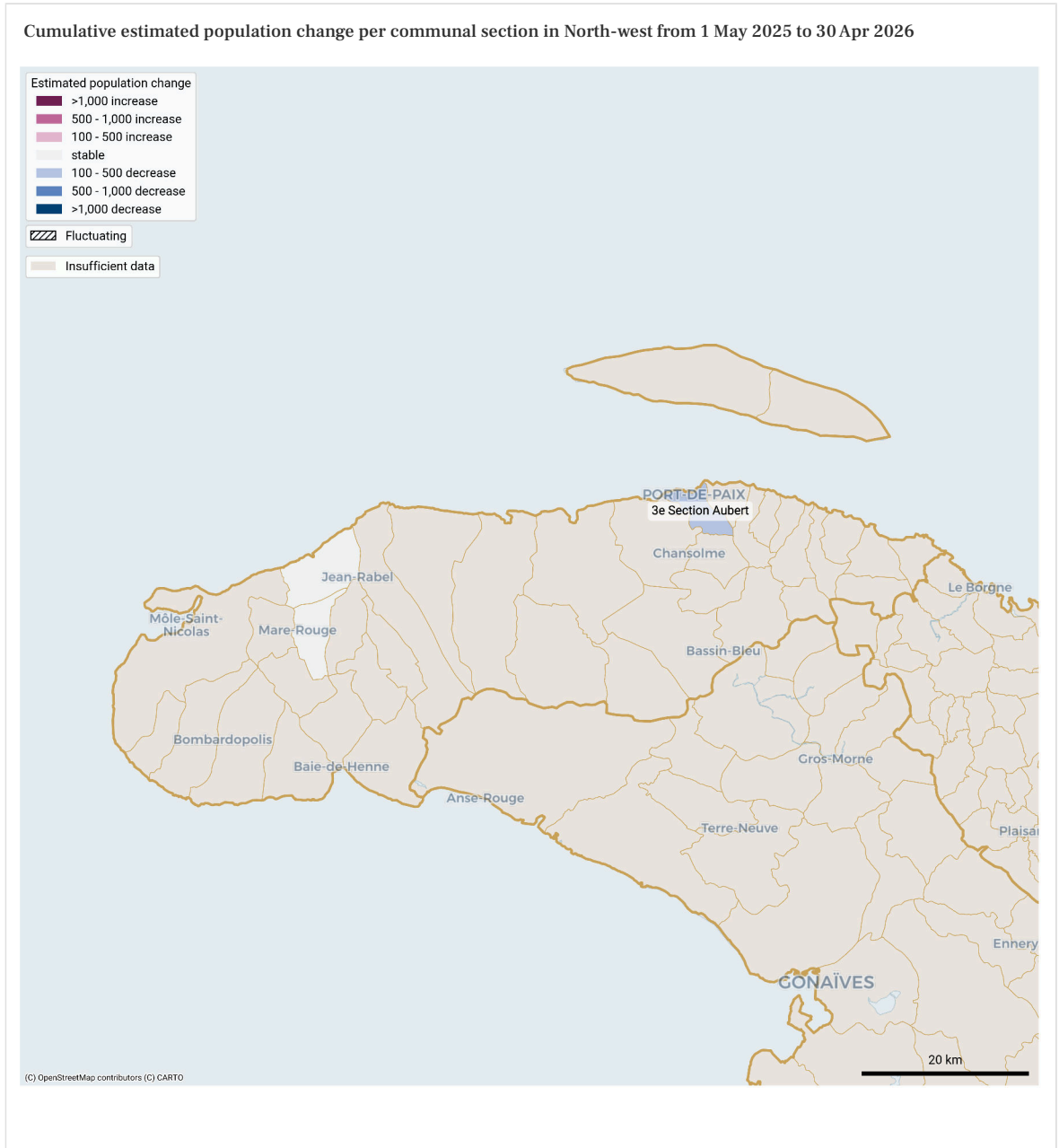
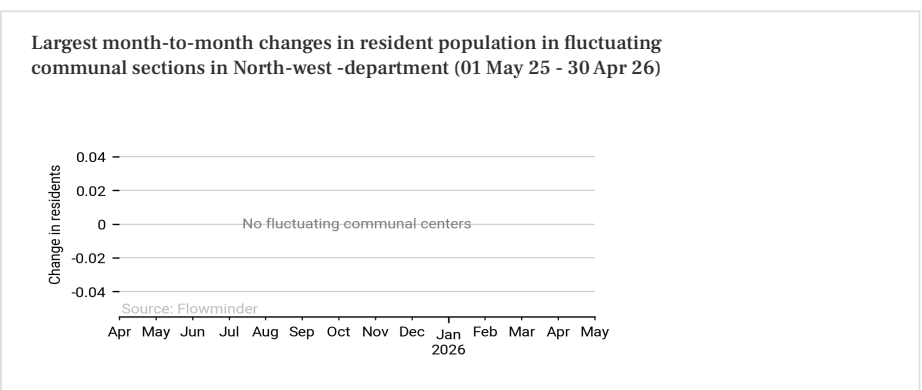
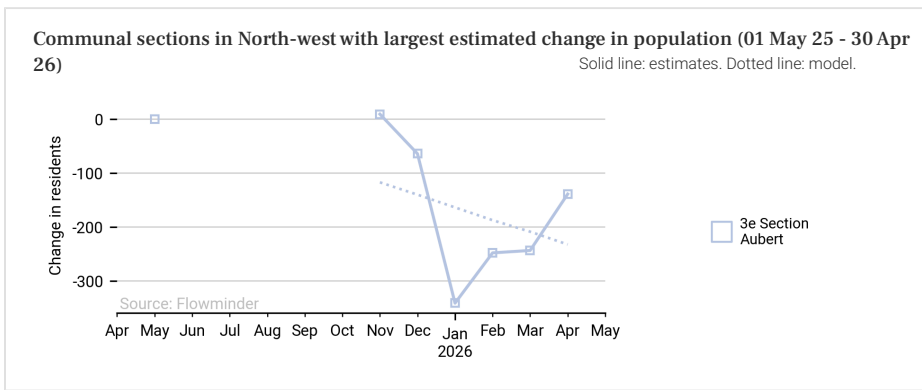
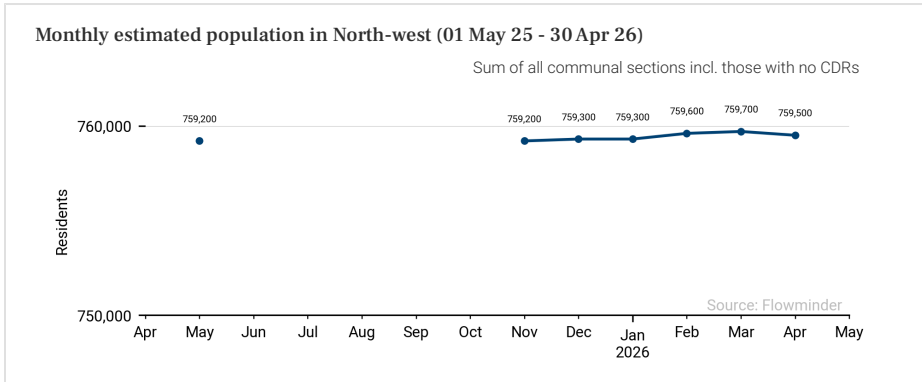
Cumulative estimated population change per communal section in North from 1 May 2025 to 30 Apr 2026



These population estimates come from Call Detail Records (CDRs) (mobile phone usage data) and other datasets for reference and adjustments. The estimates provided are not survey estimates, key informant estimates or field observations. If you are unfamiliar with this data source please read our documentation which can be found at www.flowminder.org



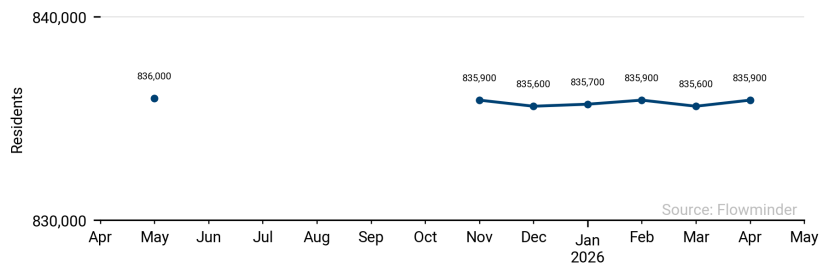
These population estimates come from Call Detail Records (CDRs) (mobile phone usage data) and other datasets for reference and adjustments. The estimates provided are not survey estimates, key informant estimates or field observations. If you are unfamiliar with this data source please read our documentation which can be found at www.flowgeek.org



These population estimates come from Call Detail Records (CDRs) (mobile phone usage data) and other datasets for reference and adjustments. The estimates provided are not survey estimates, key informant estimates or field observations. If you are unfamiliar with this data source please read our documentation which can be found at www.flowminder.org

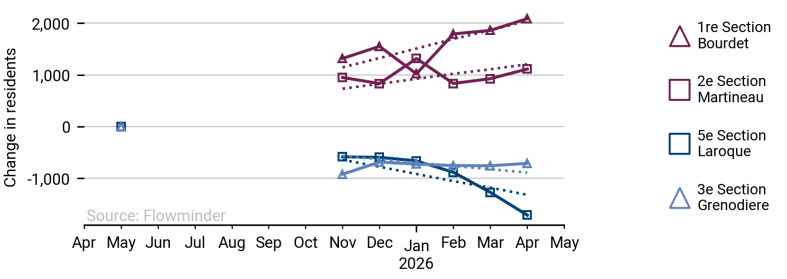
Monthly estimated population in South (01 May 25 - 30 Apr 26)

Sum of all communal sections incl. those with no CDRs

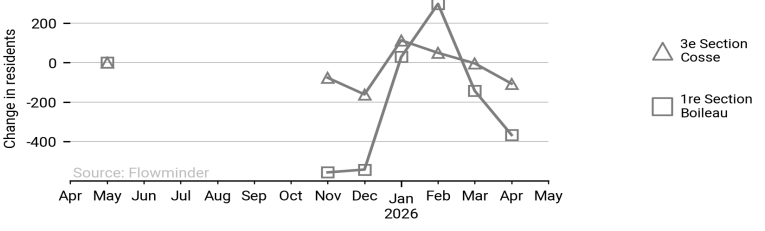


Communal sections in South with largest estimated change in population (01 May 25 - 30 Apr 26)

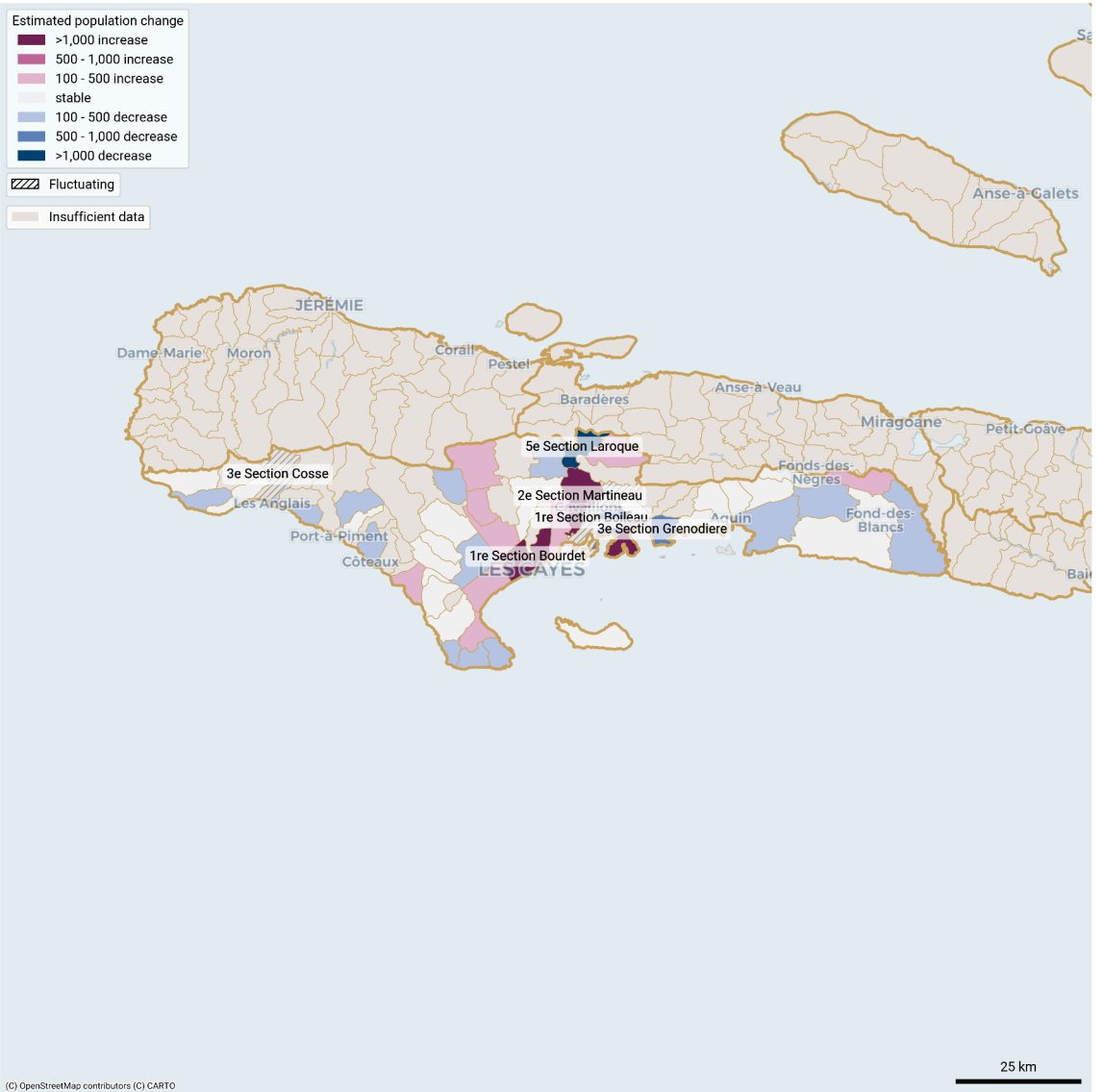
Solid line: estimates. Dotted line: model.



Largest month-to-month changes in resident population in fluctuating communal sections in South -department (01 May 25 - 30 Apr 26)



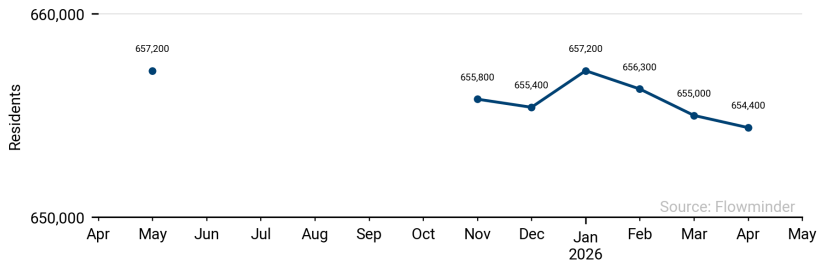
Cumulative estimated population change per communal section in South from 1 May 2025 to 30 Apr 2026



These population estimates come from Call Detail Records (CDRs) (mobile phone usage data) and other datasets for reference and adjustments. The estimates provided are not survey estimates, key informant estimates or field observations. If you are unfamiliar with this data source please read our documentation which can be found at www.flowgeek.org

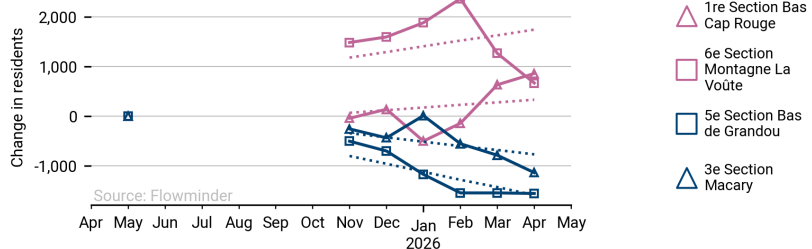
Monthly estimated population in South-east (01 May 25 - 30 Apr 26)

Sum of all communal sections incl. those with no CDRs

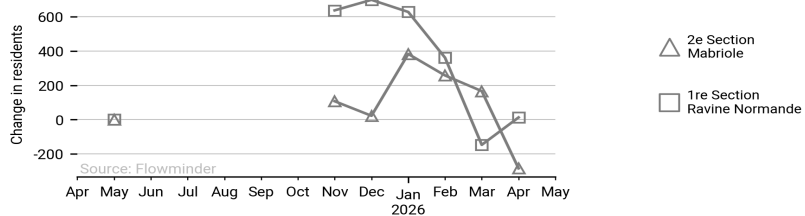


Communal sections in South-east with largest estimated change in population (01 May 25 - 30 Apr 26)

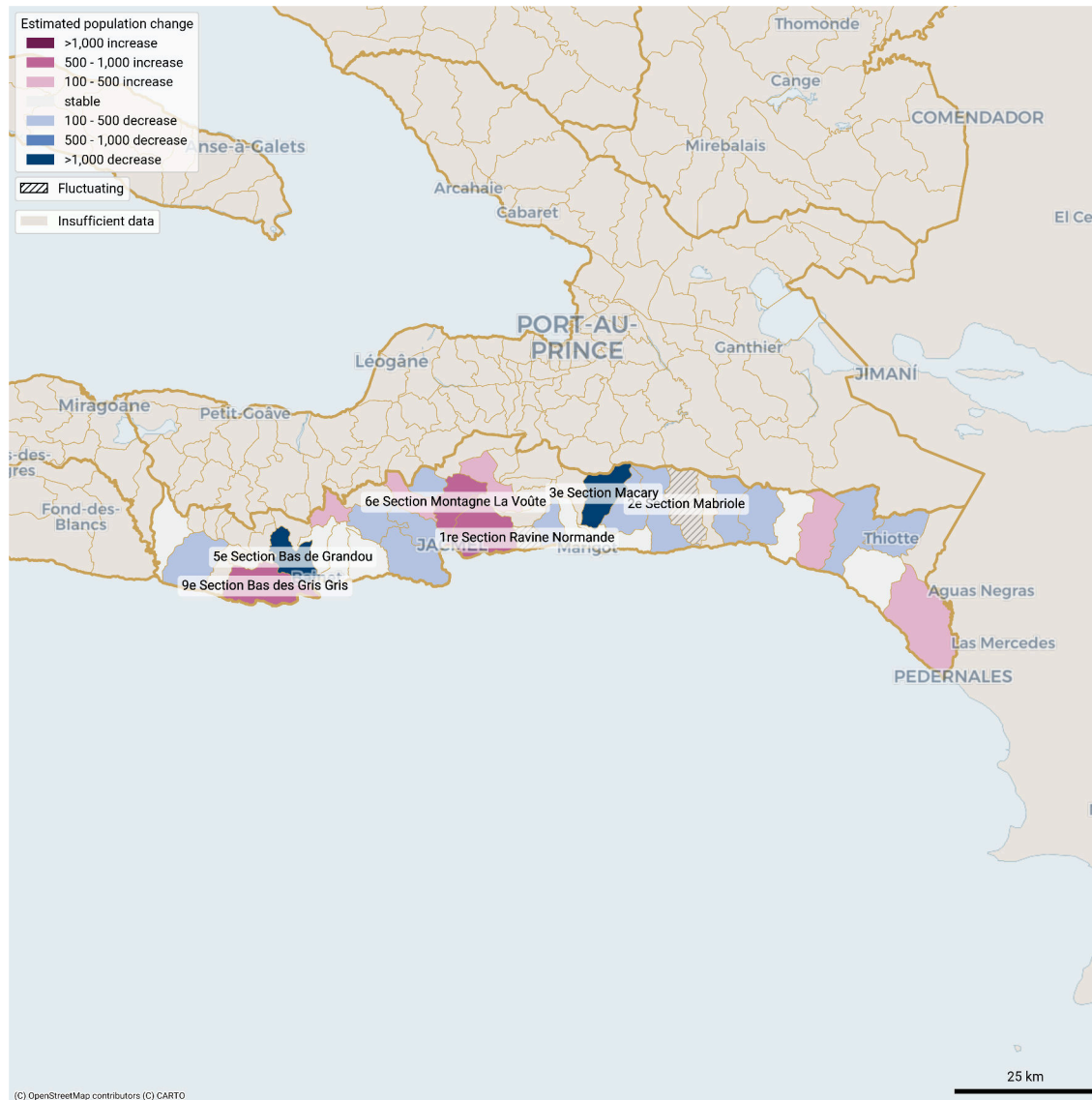
Solid line: estimates. Dotted line: model.



Largest month-to-month changes in resident population in fluctuating communal sections in South-east -department (01 May 25 - 30 Apr 26)



Cumulative estimated population change per communal section in South-east from 1 May 2025 to 30 Apr 2026



These population estimates come from Call Detail Records (CDRs) (mobile phone usage data) and other datasets for reference and adjustments. The estimates provided are not survey estimates, key informant estimates or field observations. If you are unfamiliar with this data source please read our documentation which can be found at www.flowminder.org

List of communal sections with estimated changes in population where |total change|> 100 (01 May 25 - 30 Apr 26): increasing, decreasing or fluctuating

Department	Communal section	Population estimate Apr 2026	Trend type in the last 12 months	Estimated change over the last 12 months	Largest estimated month-to-month change
Artibonite	6e Section Charrette	118,700	Increasing	2,220	-
Artibonite	2e Section Bois Neuf (Saint-Marc)	64,100	Decreasing	-1,350	-
Artibonite	5e Section Bocozele	63,700	Increasing	360	-
Artibonite	1re Section Platana	33,900	Increasing	190	-
Artibonite	2e Section Fosse Naboth ou Duvalon	32,700	Decreasing	-750	-
Artibonite	1re Section Villars	29,400	Increasing	690	-
Artibonite	1re Section Deluge	19,100	Fluctuating	-	1340
Centre	1re Section Juanaria	77,700	Decreasing	-370	-
Grande-Anse	9e Section Fond Rouge Torbeck	33,700	Increasing	580	-
Grande-Anse	8e Section Fond Rouge Dahere	31,200	Increasing	590	-
Grande-Anse	3e Section Haute Guinaudee	21,300	Increasing	330	-
Grande-Anse	1re Section Beaumont	20,800	Fluctuating	-	< 100
Grande-Anse	1re Section Grandoit	19,600	Decreasing	-880	-
Grande-Anse	1re Section Basse Voldrogue	18,100	Decreasing	-1,280	-
Grande-Anse	3e Section Desormeau	16,700	Decreasing	-310	-
Grande-Anse	6e Section Îles Blanches	13,900	Decreasing	-450	-
Grande-Anse	2e Section Balisiers	11,700	Fluctuating	-	< 100
Grande-Anse	2e Section Espere	11,200	Decreasing	-420	-
Grande-Anse	5e Section Baliverne	10,500	Decreasing	-320	-
Grande-Anse	3e Section Grand Vincent	8,900	Fluctuating	-	400
Grande-Anse	3e Section Îlet a Pierre Joseph	8,500	Increasing	570	-
Grande-Anse	1re Section Carrefour Charles ou Jacqui	7,800	Decreasing	-100	-
Grande-Anse	1re Section Bernagousse	6,500	Increasing	330	-

Department	Communal section	Population estimate Apr 2026	Trend type in the last 12 months	Estimated change over the last 12 months	Largest estimated month-to-month change
Grande-Anse	5e Section Duchity	5,800	Decreasing	-110	-
Grande-Anse	1re Section Bariadelle	5,000	Fluctuating	-	< 100
Grande-Anse	4e Section Mandou	3,800	Decreasing	-130	-
Nippes	1re Section Chalon	44,400	Increasing	820	-
Nippes	3e Section Tournade (Quartier de Changeux)	19,400	Fluctuating	-	100
Nippes	2e Section Grande-Riviere-Joly	18,500	Decreasing	-180	-
Nippes	1re Section Fond des Lianes	13,200	Decreasing	-150	-
Nippes	2e Section Fond-des-Negres ou Morne Brice	12,400	Increasing	210	-
Nippes	4e Section St-Michel	12,100	Increasing	260	-
Nippes	2e Section Anse aux Pins	10,800	Fluctuating	-	450
Nippes	1re Section Salagnac	10,000	Decreasing	-120	-
Nippes	1re Section l'Asile ou Nan Paul	9,500	Increasing	300	-
Nippes	3e Section Lieve ou Vigny	8,100	Decreasing	-290	-
Nippes	1re Section Baconnois-Barreau	7,700	Decreasing	-490	-
Nippes	3e Section Arnaud (Morcou)	7,500	Fluctuating	-	2440
Nippes	1re Section Raymond	7,300	Decreasing	-350	-
Nippes	1er Section Bouzi	6,600	Fluctuating	-	< 100
Nippes	3e Section Saut du Baril	6,200	Fluctuating	-	100
Nippes	4e Section Bezin	1,800	Fluctuating	-	170
North	5e Section Ravine Desroches	72,300	Increasing	310	-
North	7e Section Bassin	30,500	Decreasing	-240	-
North	1re Section Morne Rouge	19,800	Increasing	1,740	-
North	2e Section Chabotte	19,300	Decreasing	-150	-

These population estimates come from Call Detail Records (CDRs) (mobile phone usage data) and other datasets for reference and adjustments. The estimates provided are not survey estimates, key informant estimates or field observations. If you are unfamiliar with this data source please read our documentation which can be found at www.flowgeek.org

List of communal sections with estimated changes in population where |total change|> 100 (01 May 25 - 30 Apr 26): increasing, decreasing or fluctuating

Department	Communal section	Population estimate Apr 2026	Trend type in the last 12 months	Estimated change over the last 12 months	Largest estimated month-to-month change
North	2e Section Petit Howars (la Fange)	18,000	Decreasing	-100	-
North	2e Section Basse Plaine	17,500	Decreasing	-110	-
North	2e Section Bonnet a l'Eveque	15,000	Increasing	150	-
North	1re Section Camp-Louise	9,300	Increasing	250	-
North	6e Section Bras Gauche	8,600	Fluctuating	-	280
North-East	1re Section Haut Maribahoux	109,600	Increasing	380	-
North-East	1re Section Dumas	30,800	Increasing	150	-
North-West	3e Section Aubert	107,400	Decreasing	-140	-
South	1re Section Bourdet	98,000	Increasing	2,090	-
South	1re Section Boury	32,000	Increasing	230	-
South	3e Section Cosse	22,200	Fluctuating	-	270
South	2e Section Champlois	20,000	Increasing	220	-
South	2e Section Martineau	16,900	Increasing	1,110	-
South	1re Section Boileau	16,500	Fluctuating	-	570
South	1re Section Levy Mersan	15,800	Increasing	140	-
South	2e Section Fonfrede	15,300	Increasing	370	-
South	6e Section La Colline	15,200	Decreasing	-100	-
South	1re Section Beaulieu	14,800	Increasing	140	-
South	2e Section Baie Dumesle	14,400	Increasing	1,040	-
South	2e Section Berault	14,100	Decreasing	-410	-
South	3e Section Grenodiere	12,800	Decreasing	-710	-
South	1re Section Macean	12,100	Decreasing	-180	-
South	1re Section Blactote	11,500	Decreasing	-280	-

Department	Communal section	Population estimate Apr 2026	Trend type in the last 12 months	Estimated change over the last 12 months	Largest estimated month-to-month change
South	3e Section Tibi Davezac	10,900	Decreasing	-200	-
South	2e Section Despas	10,800	Decreasing	-130	-
South	6e Section Solon	10,800	Decreasing	-570	-
South	10e Section Guirand	10,500	Increasing	130	-
South	5e Section Laroque	10,500	Decreasing	-1,720	-
South	7e Section Frangipane	10,400	Decreasing	-170	-
South	3e Section Bony	10,300	Decreasing	-130	-
South	1re Section Tapion	9,000	Increasing	230	-
South	6e Section Boulmier	8,500	Increasing	280	-
South	3e Section Trichet	8,200	Decreasing	-170	-
South	2e Section Dumont	8,000	Decreasing	-100	-
South	4e Section Mare Henri	7,400	Increasing	270	-
South	2e Section Balais	7,200	Decreasing	-140	-
South	2e Section Debouchette	7,100	Decreasing	-230	-
South	2e Section Dory	6,200	Decreasing	-390	-
South-East	1re Section Bas Cap Rouge	86,300	Increasing	860	-
South-East	6e Section Montagne La Voûte	45,500	Increasing	660	-
South-East	1re Section Thiotte	28,200	Decreasing	-240	-
South-East	1re Section Boucan Guillaume	24,300	Increasing	500	-
South-East	11e Section La Montagne	18,900	Decreasing	-290	-
South-East	9e Section Bas des Gris Gris	17,900	Increasing	540	-
South-East	1re Section Colline des Chenes ou Bodarie	16,800	Decreasing	-100	-
South-East	1re Section Gris Gris	16,300	Decreasing	-130	-

List of communal sections with estimated changes in population where |total change|> 100 (01 May 25 - 30 Apr 26): increasing, decreasing or fluctuating

Department	Communal section	Population estimate Apr 2026	Trend type in the last 12 months	Estimated change over the last 12 months	Largest estimated month-to-month change
South-East	2e Section Gaillard	16,300	Decreasing	-140	-
South-East	3e Section Macary	15,900	Decreasing	-1,140	-
South-East	5e Section Bel Air	15,800	Decreasing	-490	-
South-East	4e Section Fond Jean Noël	15,400	Decreasing	-490	-
South-East	1re Section La Vallée de Jacmel ou Muzac	15,000	Decreasing	-400	-
South-East	2e Section La Vallée de Bainet ou Ternier	13,100	Increasing	180	-
South-East	7e Section Mapou	12,900	Increasing	180	-
South-East	5e Section Bas de Grandou	12,900	Decreasing	-1,560	-
South-East	1re Section Ravine Normande	12,200	Fluctuating	-	640
South-East	2e Section Mabriole	12,000	Fluctuating	-	360
South-East	3e Section Cochon Gras	11,800	Increasing	340	-
South-East	10e Section La Vanneau	11,100	Decreasing	-190	-
South-East	4e Section Corail Lamothe	10,300	Decreasing	-250	-
South-East	8e Section Bas Coq Chante	10,300	Decreasing	-430	-
South-East	1re Section Bais d'Orange	10,000	Decreasing	-300	-
South-East	9e Section Haut Coq Chante	6,300	Increasing	240	-
West	1re Section St Martin	497,900	Increasing	4,310	-
West	1re Section Turgeau	478,000	Decreasing	-3,170	-
West	3e Section Martissant	283,400	Decreasing	-920	-
West	5e Section Bellevue Chardonniere	278,700	Increasing	1,700	-
West	10e Section Thor	270,100	Decreasing	-1,270	-
West	11e Section Riviere Froide	216,200	Decreasing	-1,040	-
West	2e Section Morne l'Hopital	178,300	Increasing	11,250	-

Department	Communal section	Population estimate Apr 2026	Trend type in the last 12 months	Estimated change over the last 12 months	Largest estimated month-to-month change
West	3e Section Etang du Jonc	131,400	Decreasing	-2,620	-
West	2e Section des Varreux (Croix-Des-Bouquets)	127,000	Decreasing	-5,170	-
West	1re Section Dessources	124,800	Decreasing	-260	-
West	3e Section Bellevue	119,900	Decreasing	-470	-
West	3e Section des Vases	110,000	Increasing	1,410	-
West	1re Section des Varreux (Croix-Des-Bouquets)	79,300	Increasing	-220	-
West	1re Section Tete-a-Boeuf	57,200	Increasing	220	-
West	7e Section Gerard	55,900	Decreasing	-140	-
West	2e Section Petite Riviere	55,700	Fluctuating	-	2860
West	9e Section Bizoton	52,600	Decreasing	-1,600	-
West	1re Section Fonds-Verrettes	52,200	Fluctuating	-	150
West	3e Section Grande Rivere	39,900	Decreasing	-740	-
West	4e Section Bellevue	36,900	Increasing	1,200	-
West	1re Section des Varreux (Cite Soleil)	36,700	Decreasing	-200	-
West	2e Section Petite Source	36,000	Increasing	-150	-
West	1re Section Bino	35,000	Increasing	170	-
West	3e Section Sourcailles	29,500	Increasing	250	-
West	1re Section Montagne Noire	26,300	Increasing	1,210	-
West	12e Section des Fourques	22,900	Increasing	470	-
West	2e Section Boucassin	22,200	Decreasing	-920	-
West	3e Section Petit Boucan	21,800	Increasing	1,290	-
West	4e Section Fond de Boudin	15,100	Decreasing	-290	-
West	4e Section Bellevue la Montagne	14,300	Decreasing	-140	-

List of communal sections with estimated changes in population where |total change| > 100 (01 May 25 - 30 Apr 26): increasing, decreasing or fluctuating

Department	Communal section	Population estimate Apr 2026	Trend type in the last 12 months	Estimated change over the last 12 months	Largest estimated month-to-month change
West	8e Section des Platons	8,500	Decreasing	-350	-
West	4e Section Montrouis	7,700	Decreasing	-1,030	-
West	5e Section Delices	7,600	Decreasing	-270	-
West	9e Section des Palmes	6,700	Fluctuating	-	830
West	3e Section Trou Louis	5,900	Fluctuating	-	< 100
West	5e Section Grand Fond	5,200	Fluctuating	-	150
West	2e Section Fonds Baptiste	4,700	Increasing	700	-
West	2e Section Grand Vide	4,500	Increasing	220	-
West	4e Section Grand Lagon	3,900	Fluctuating	-	< 100
West	5e Section Palmiste a Vin	3,600	Increasing	120	-
West	6e Section Trou Canari	3,100	Decreasing	-110	-
West	10e Section des Palmes	1,900	Decreasing	-330	-

Department	Communal section	Population estimate Apr 2026	Trend type in the last 12 months	Estimated change over the last 12 months	Largest estimated month-to-month change
------------	------------------	------------------------------	----------------------------------	--	---

Authors And Funders

This report was authored by the Flowminder Foundation.

This work was made possible by funding from the UK Foreign, Commonwealth and Development Office (FCDO).

Acknowledgements

This study was made possible thanks to the anonymised (aggregated) Call Detail Records provided by a mobile network operator in Haiti.

How to use this report

We provide population estimates that take into account population movements within Haiti, per month and per communal section. We report the average decreasing/increasing trends for each communal section for which we have data. However, it is important to note that multiple trends can be observed over the reported 12-month period. The current crisis has led to large population movements, particularly of internally displaced people (e.g. [IDP movement](#)), which can result in population statistics becoming outdated over a few months, and therefore impairing preparedness efforts (e.g. hazard population exposure estimation, needs assessment, service and contingency planning).

Indicators presented

Modelled change (trend): the predicted population change for the reporting period from all 12 monthly estimates, which smoothes out monthly variations (linear regression).

Estimated change: the difference in the estimated population between the first and last months of the 12 month reporting period, which does not reflect any monthly variation within.

For communal sections with fewer than 10 months of resident estimates during the reporting period, we do not make a trend classification (insufficient data). For monthly population estimates at the department level, we carry forward the latest estimate to fill missing months in a communal section so that the aggregated changes at the department level are only based on observed CDR-derived mobility.

For communal sections with fast changing populations, we categorised them as 'increasing', 'decreasing', 'stable', when there is little to no change; or as 'fluctuating' when large month-to-month changes prevented us from detecting a trend.

Report's data

This report uses our v4.0 dataset ([documentation](#), [release notes](#)), available at <https://haiti.mobility-dashboard.org>.

This report and its contents may only be shared with attribution to the Flowminder Foundation and Digicel Haiti. Adaptation is permitted as long as the changes are indicated and the Flowminder Foundation and Digicel Haiti are cited. Use of the report and its contents is limited to humanitarian and development purposes.

Disclaimer of Warranties and Limitation of Liability: To the extent possible, Flowminder and Digicel offer this report and its contents as-is and as-available, and make no representations or warranties of any kind concerning this report and its contents, whether express, implied, statutory, or other. This includes, without limitation, warranties of title, merchantability, fitness for a particular purpose, non-infringement, absence of latent or other defects, accuracy, or the presence or absence of errors, whether or not known or discoverable.

To the extent possible, in no event will Flowminder or Digicel be liable on any legal theory (including, without limitation, negligence) or otherwise for any direct, special, indirect, incidental, consequential, punitive, exemplary, or other losses, costs, expenses, or damages arising out of the use of the report or its contents, even if Flowminder or Digicel have been advised of the possibility of such losses, costs, expenses, or damages. The disclaimer of warranties and limitation of liability provided above shall be interpreted in a manner that, to the extent possible, most closely approximates an absolute disclaimer and waiver of all liability.

Data privacy & governance

No personal data, such as an individual's identity, demographics, location, contacts or movements, is made available to the government or any other third party at any time. All results produced by Flowminder are aggregated results (for example, subscriber density in a given municipality), which means that they do not contain any information about individual subscribers.

This data is fully anonymised. This approach complies with the European Union's General Data Protection Regulation (EU GDPR2016/679). Data is processed on a server installed behind the mobile network operator's firewall in Haiti, and no personal data leaves the operator's premises.

Data considerations

The estimates shown are our best current assessment of movements. However, there are a number of uncertainties. The information should be interpreted together with other available evidence.

For more information about our methods, please read our Haiti Mobility Data Indicators documentation on residents and relocation at [here](#).

Data Sources

Pseudonymised Call Detail Records: Digicel Haiti

CDR-based data products: Flowminder

Phone survey data: [HT PS 2023](#)

Field survey data: [MSNA 2022](#) and [MSNA 2024](#)

Population estimates: [UN data](#); IHSI 2015; and IHSI 2020.

The following citation is required when using the data and information included in this report:

Flowminder Foundation, May 2026: Preparedness report, Mobility situation in Haiti from 01 May 2025 to 30 Apr 2026

For more information on the terms and conditions of Flowminder's reports and information products, please visit flowminder.org