

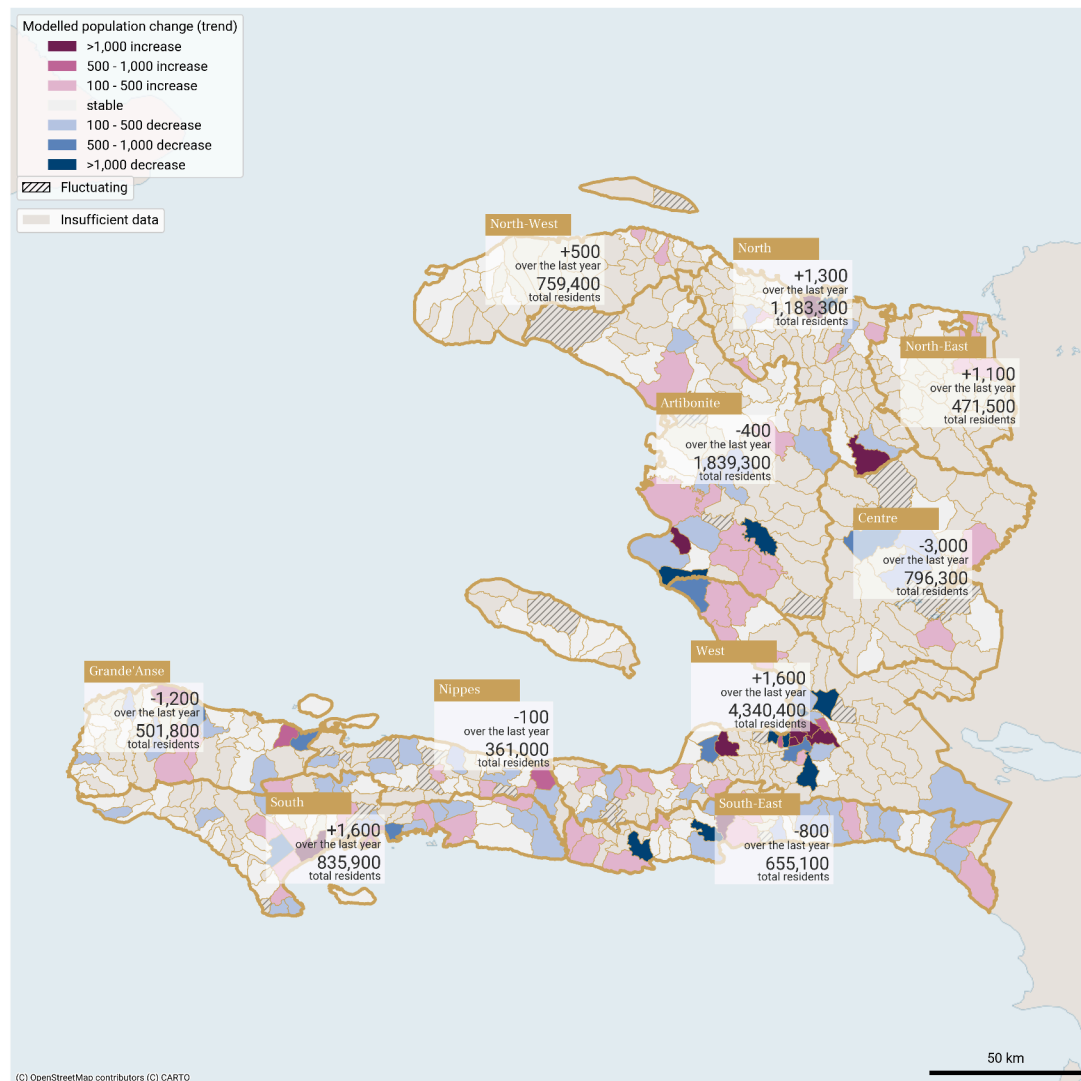
Communal sections with the largest modelled change in population between 01 Apr 25 - 31 Mar 26

Department	Communal section	Population estimate Mar 2026	Trend type in the last 12 months	Estimated change over the last 12 months
West	3e Section Sourcailles	29,200	Decreasing	-3,900
West	1re Section St Martin	495,600	Increasing	3,900
West	2e Section Morne l'Hopital	172,900	Increasing	3,200
Artibonite	6e Section Charrette	118,200	Increasing	2,800
West	2e Section des Varreux (Croix-Des-Bouquets)	129,300	Decreasing	-2,400

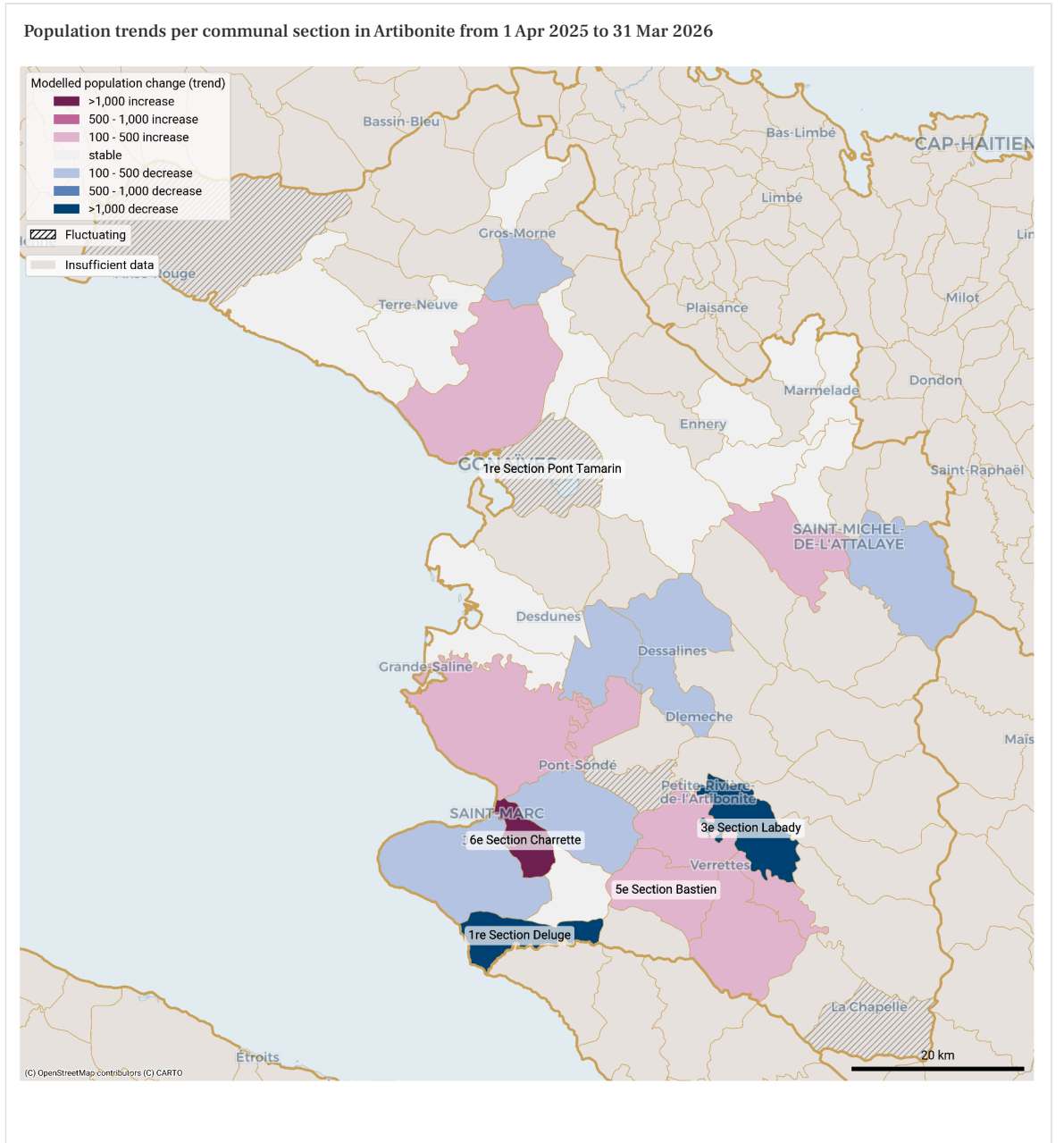
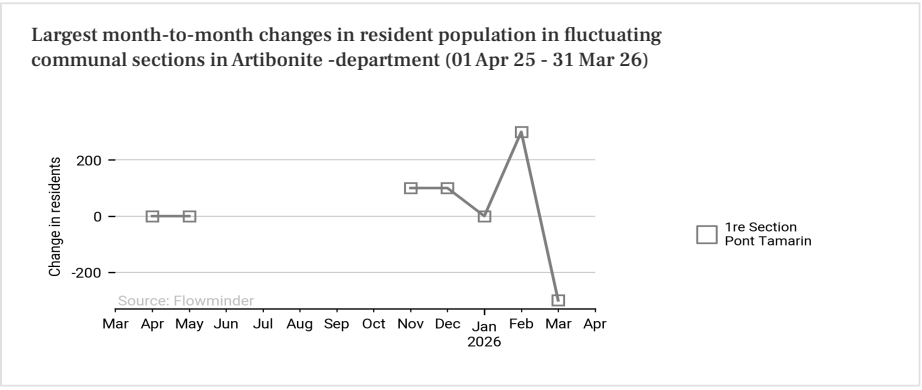
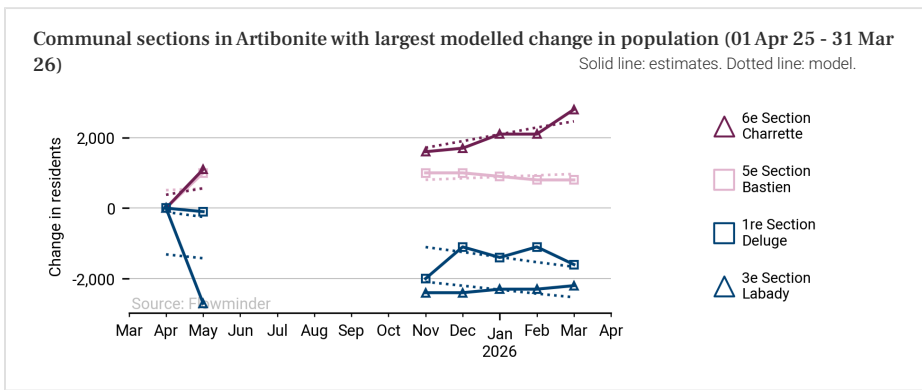
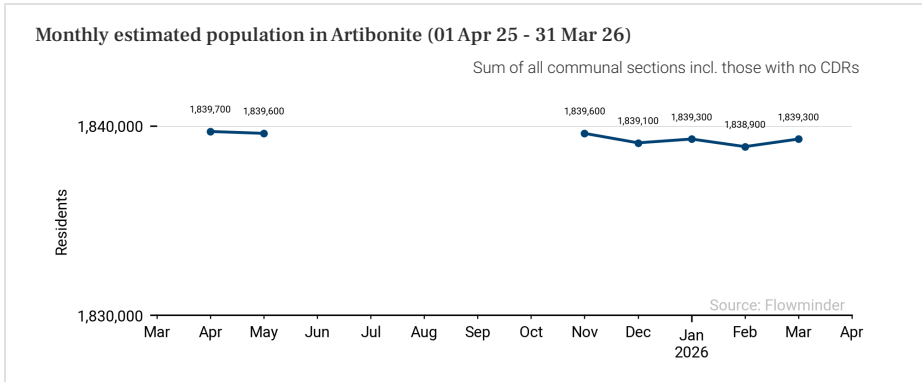
Key observations for the period 01 Apr 25 - 31 Mar 26

- The Flowminder-Digicel pipeline was interrupted from June to October 2025, with no data currently available for that period
- Overall, most communal sections show stable population estimates or minor changes (±500 people) between April 2025 and March 2026.
- In the Port-au-Prince Metropolitan Area (ZMPAP), the population of 2e Section Morne l'Hôpital (Port-au-Prince) decreased by over 2,000 people from April to May 2025, then increased by more than 4,000 between November 2025 and February 2026, resulting in a net gain of +3,200 by the end of the period. Population also steadily increased in 1re Section St Martin (Delmas) (+3,900) and 5e Section Bellevue Chardonniere (Pétion-Ville) (+2,200). In contrast, 3e Section Martissant (Port-au-Prince) experienced a sharp drop of over 2,000 people from January to February 2026, followed by a comparable rebound the following month.
- Outside ZMPAP, the largest decrease occurred in 3e Section Sourcailles (Kenscoff, West) (-3,900), likely linked to armed clashes reported by IOM-DTM ([ETT 62](#)).
- In Centre, the population declined by around 3,000 over the year, with the largest drop in 1re Section Juanaria (Hinche) (-800), mainly between April and May 2025, potentially due to armed attacks ([ETT 61.2](#)).
- In Artibonite, 3e Section Labady (Petite Rivière de l'Artibonite) decreased by -2,200, primarily in April–May 2025 ([ETT 63](#)), while 1re Section Deluge (Saint-Marc) declined by -1,600.
- Additional decreases were observed in 1re Section Basse Voldrogue (Jérémie, Grande Anse) and 2e Section Haut du Cap (Cap-Haïtien, North), both at -1,200.
- The largest population increases outside ZMPAP were recorded in 6e Section Charrette (Saint-Marc, Artibonite) (+2,800), 1re Section Bourdet (Les Cayes, South) (+2,100), and 2e Section La Belle Mère (Pignon, North) (+1,900).

Modelled population trends (communal sections) and change estimates (departments) between 1 Apr 2025 and 31 Mar 2026



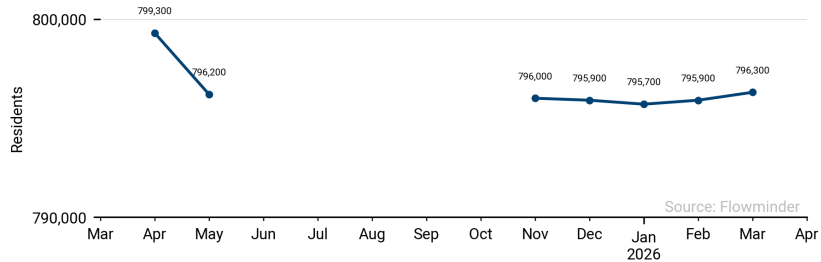
These population estimates come from Call Detail Records (CDRs) (mobile phone usage data) and other datasets for reference and adjustments. The estimates provided are not survey estimates, key informant estimates or field observations. If you are unfamiliar with this data source please read our documentation which can be found at www.flowminder.org



These population estimates come from Call Detail Records (CDRs) (mobile phone usage data) and other datasets for reference and adjustments. The estimates provided are not survey estimates, key informant estimates or field observations. If you are unfamiliar with this data source please read our documentation which can be found at www.flowminder.org

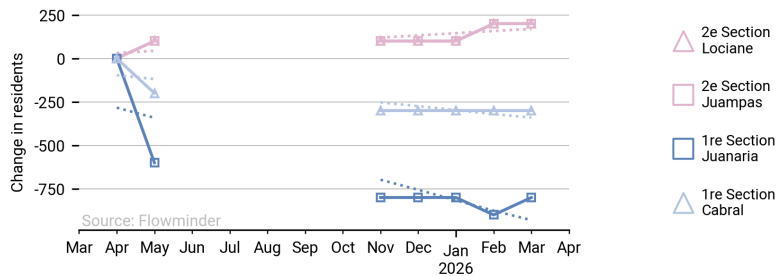
Monthly estimated population in Centre (01 Apr 25 - 31 Mar 26)

Sum of all communal sections incl. those with no CDRs

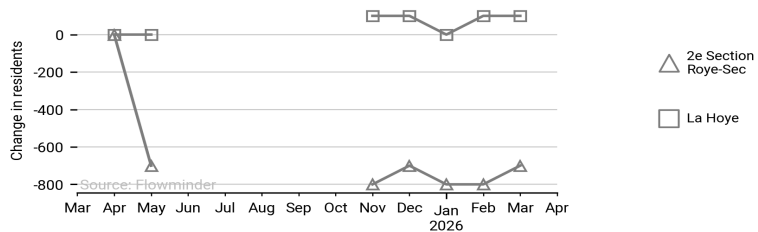


Communal sections in Centre with largest modelled change in population (01 Apr 25 - 31 Mar 26)

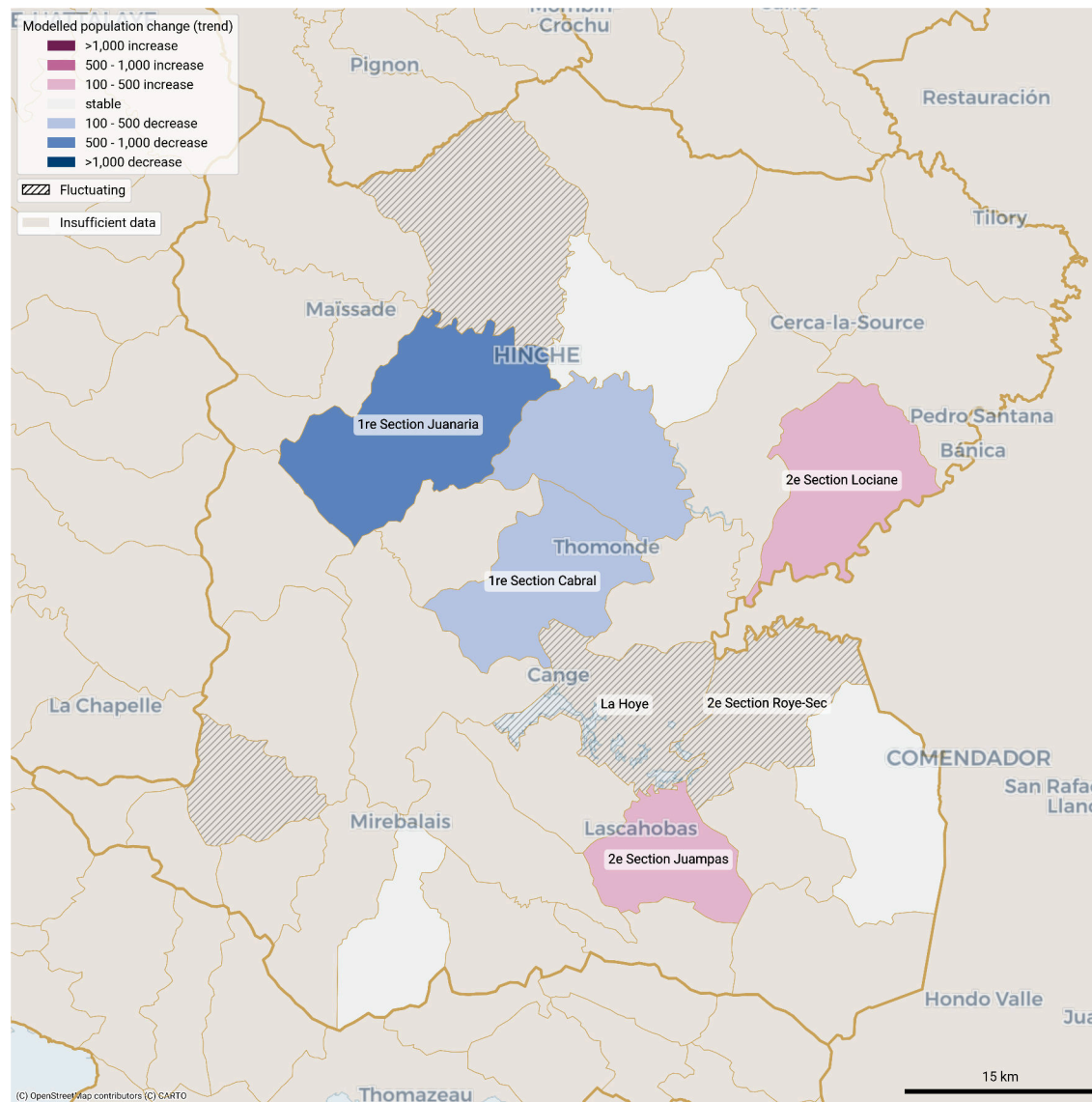
Solid line: estimates. Dotted line: model.



Largest month-to-month changes in resident population in fluctuating communal sections in Centre -department (01 Apr 25 - 31 Mar 26)



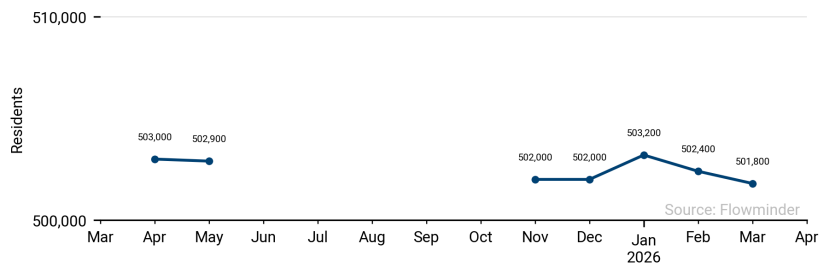
Population trends per communal section in Centre from 1 Apr 2025 to 31 Mar 2026



These population estimates come from Call Detail Records (CDRs) (mobile phone usage data) and other datasets for reference and adjustments. The estimates provided are not survey estimates, key informant estimates or field observations. If you are unfamiliar with this data source please read our documentation which can be found at www.flowminder.org

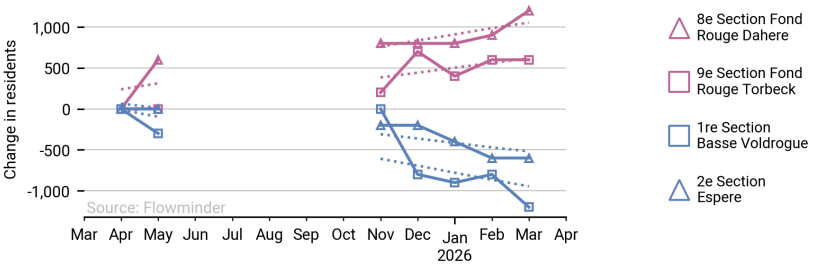
Monthly estimated population in Grande'Anse (01 Apr 25 - 31 Mar 26)

Sum of all communal sections incl. those with no CDRs

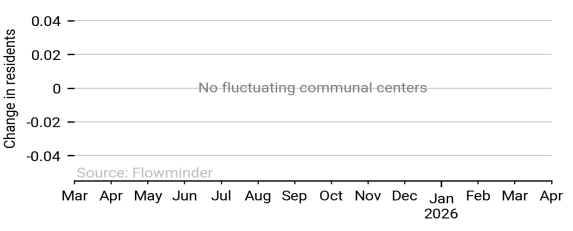


Communal sections in Grande'Anse with largest modelled change in population (01 Apr 25 - 31 Mar 26)

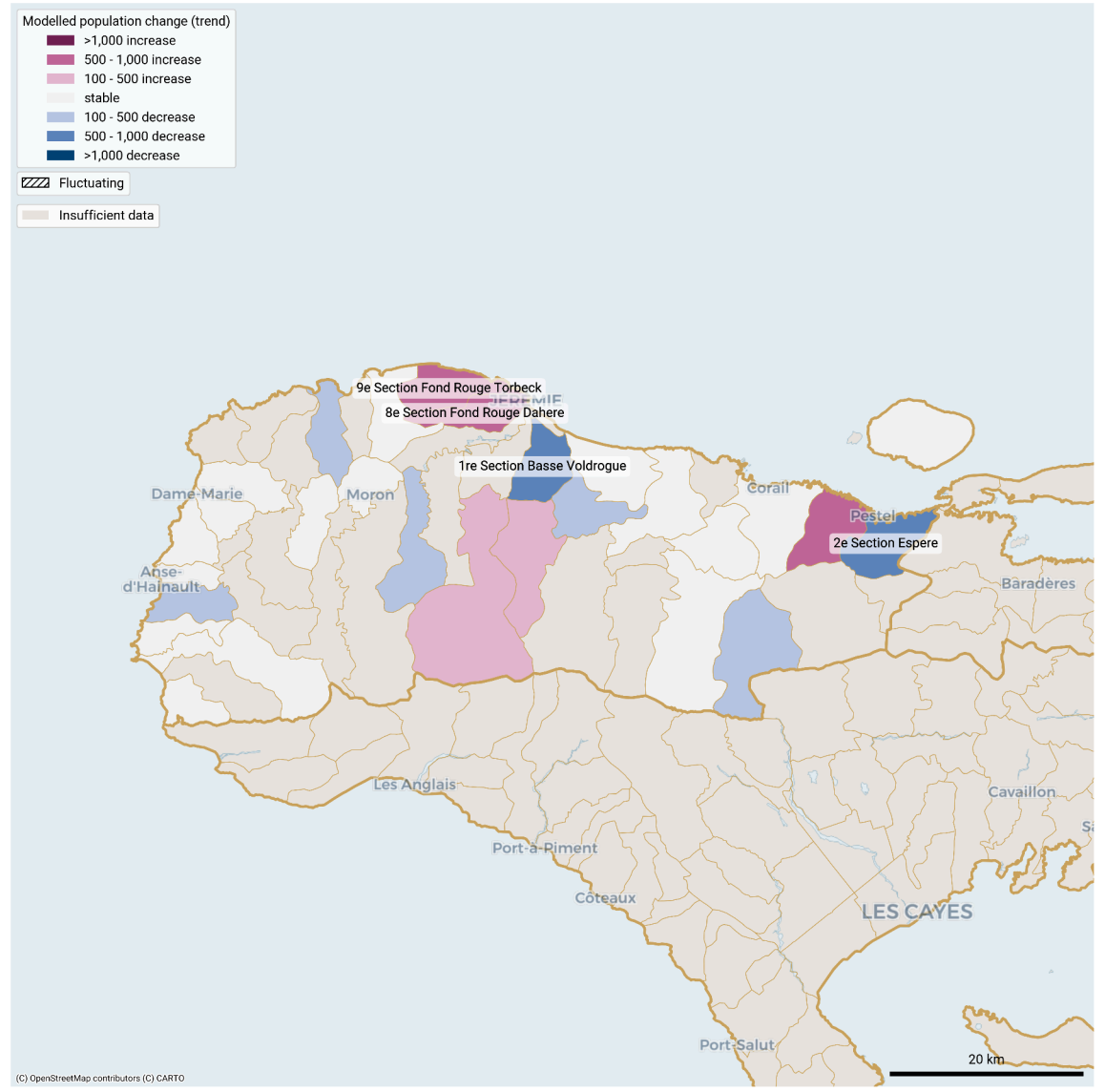
Solid line: estimates. Dotted line: model.



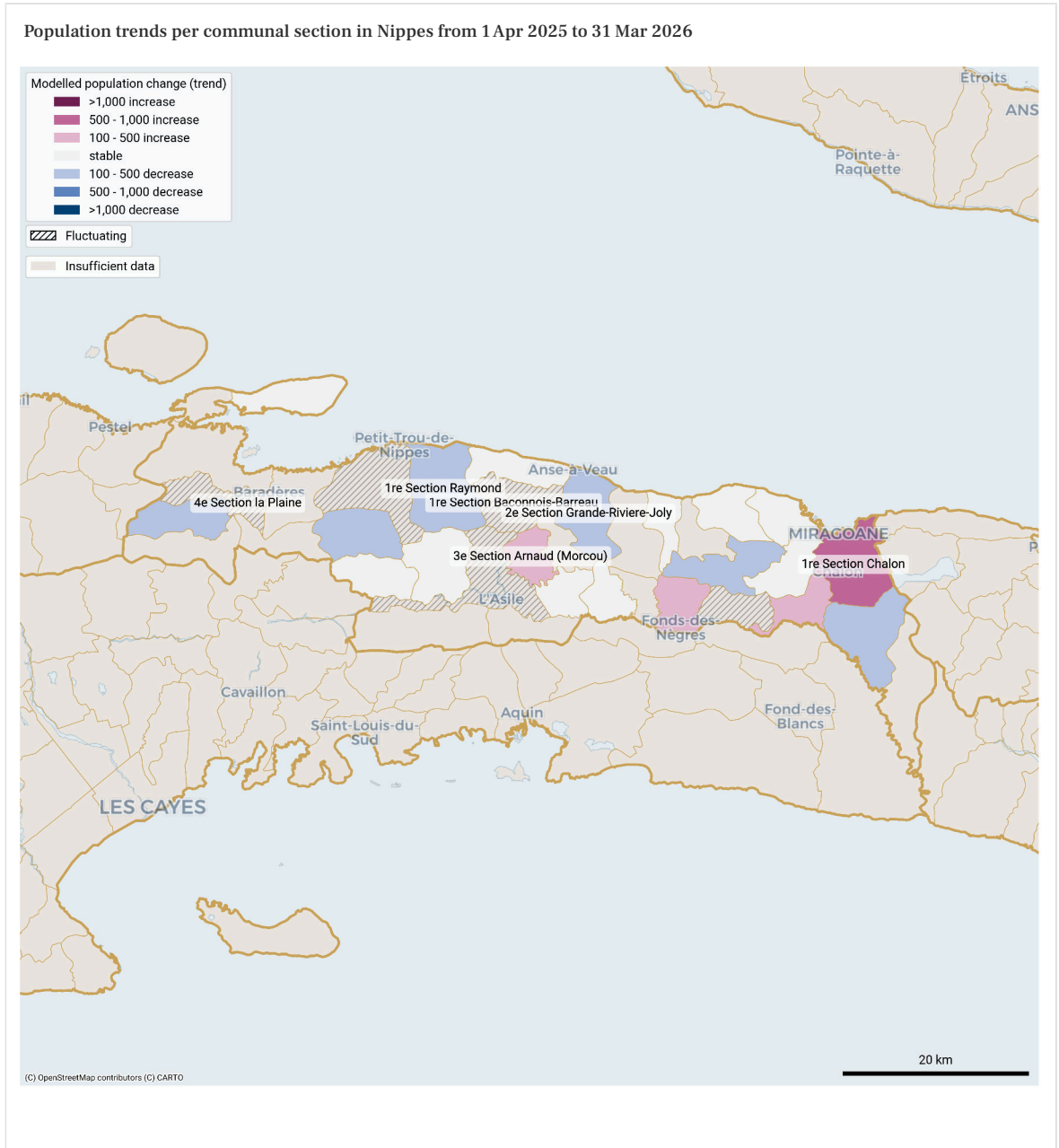
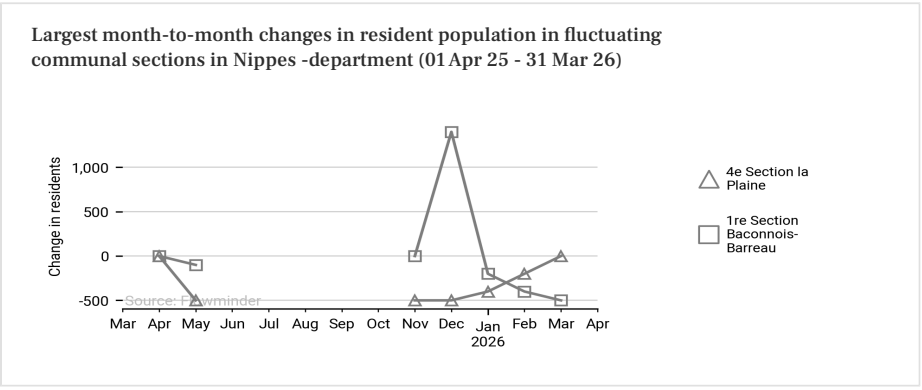
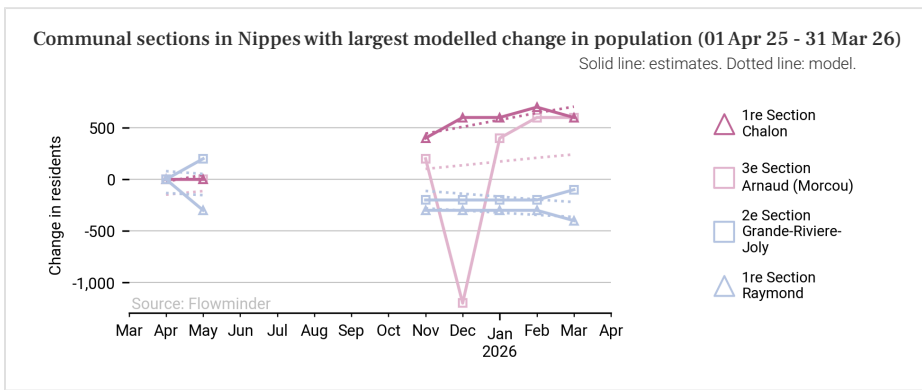
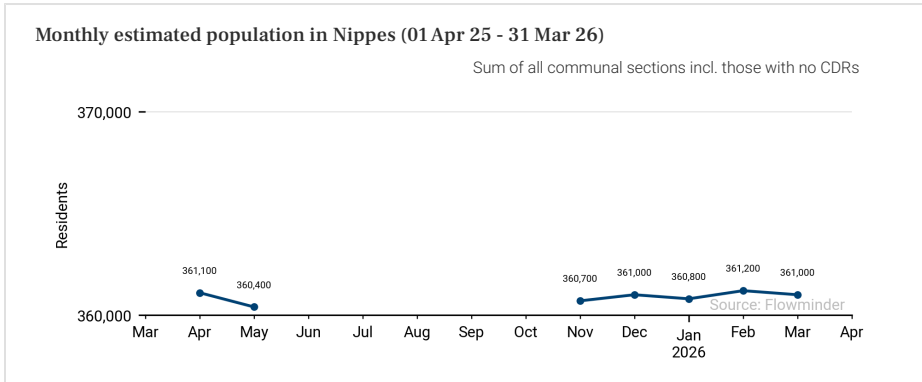
Largest month-to-month changes in resident population in fluctuating communal sections in Grande'Anse -department (01 Apr 25 - 31 Mar 26)



Population trends per communal section in Grande'Anse from 1 Apr 2025 to 31 Mar 2026



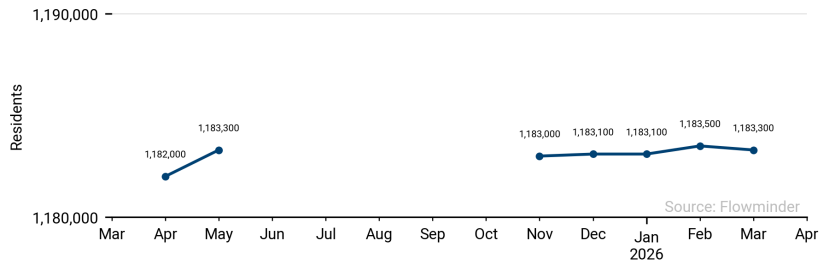
These population estimates come from Call Detail Records (CDRs) (mobile phone usage data) and other datasets for reference and adjustments. The estimates provided are not survey estimates, key informant estimates or field observations. If you are unfamiliar with this data source please read our documentation which can be found at www.flowminder.org



These population estimates come from Call Detail Records (CDRs) (mobile phone usage data) and other datasets for reference and adjustments. The estimates provided are not survey estimates, key informant estimates or field observations. If you are unfamiliar with this data source please read our documentation which can be found at www.flowminder.org

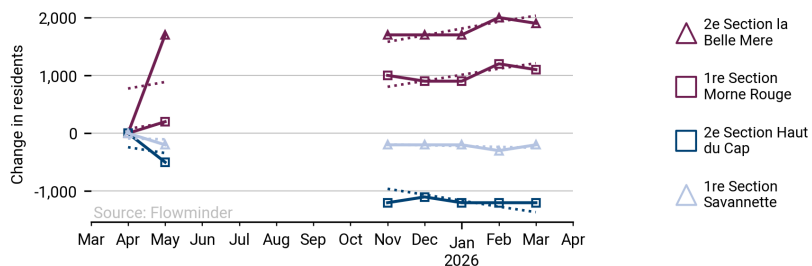
Monthly estimated population in North (01 Apr 25 - 31 Mar 26)

Sum of all communal sections incl. those with no CDRs

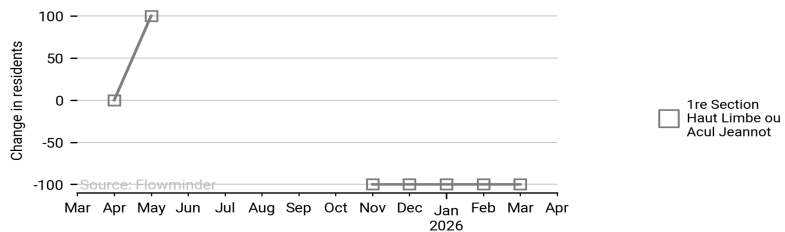


Communal sections in North with largest modelled change in population (01 Apr 25 - 31 Mar 26)

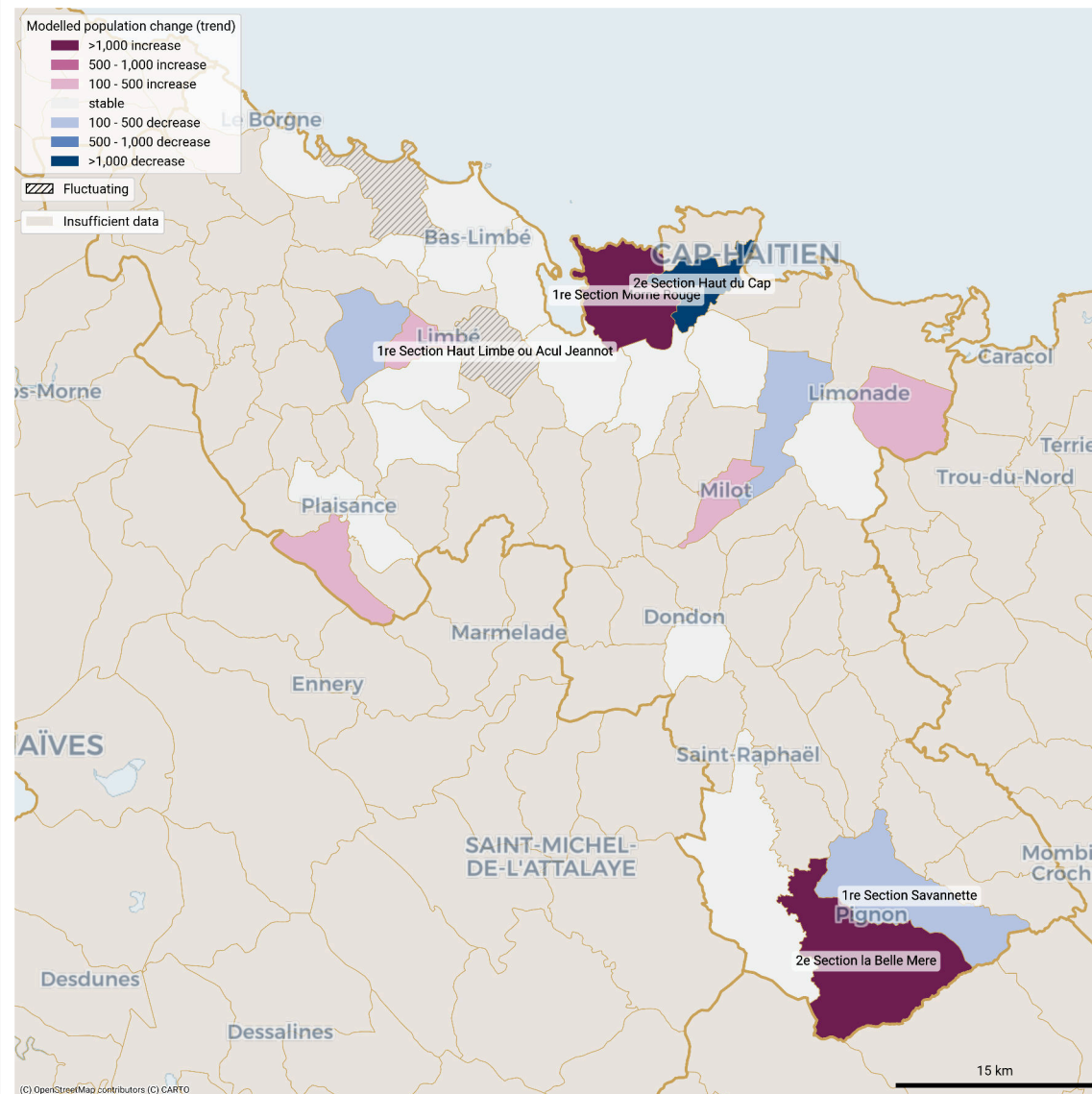
Solid line: estimates. Dotted line: model.



Largest month-to-month changes in resident population in fluctuating communal sections in North -department (01 Apr 25 - 31 Mar 26)



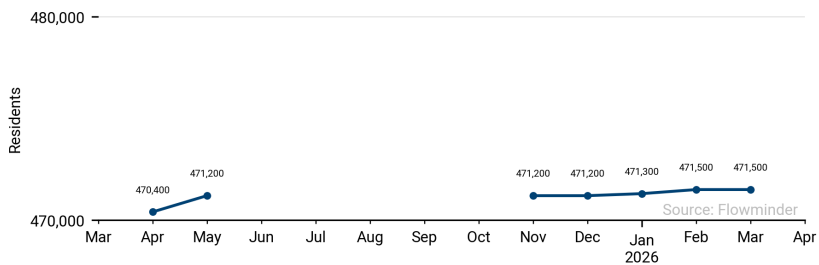
Population trends per communal section in North from 1 Apr 2025 to 31 Mar 2026



These population estimates come from Call Detail Records (CDRs) (mobile phone usage data) and other datasets for reference and adjustments. The estimates provided are not survey estimates, key informant estimates or field observations. If you are unfamiliar with this data source please read our documentation which can be found at www.flowminder.org

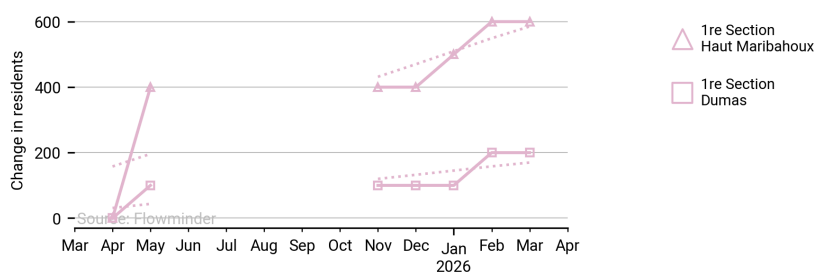
Monthly estimated population in North-east (01 Apr 25 - 31 Mar 26)

Sum of all communal sections incl. those with no CDRs

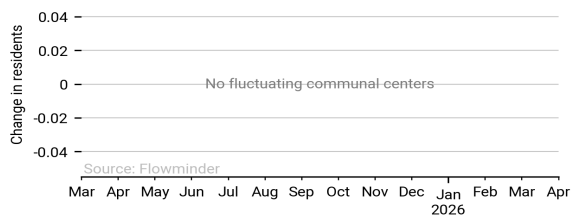


Communal sections in North-east with largest modelled change in population (01 Apr 25 - 31 Mar 26)

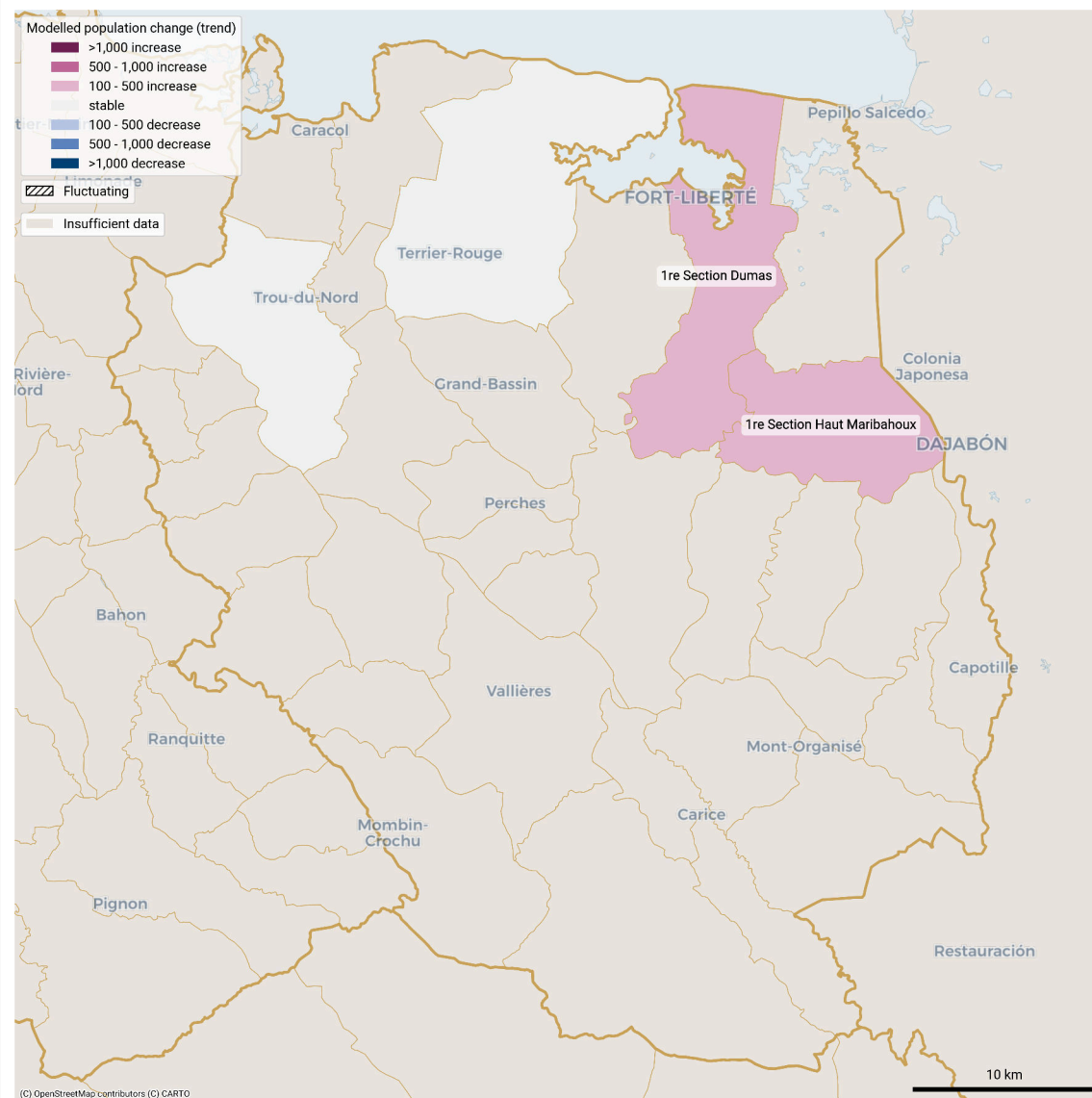
Solid line: estimates. Dotted line: model.



Largest month-to-month changes in resident population in fluctuating communal sections in North-east -department (01 Apr 25 - 31 Mar 26)



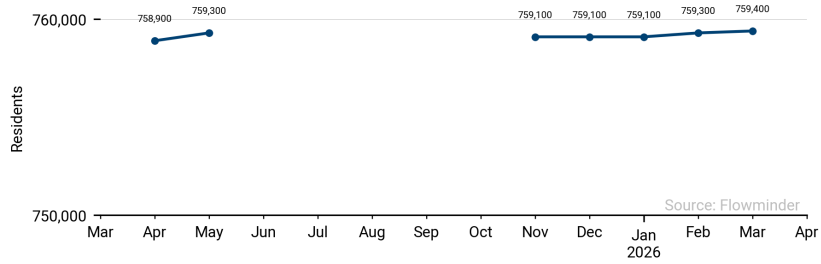
Population trends per communal section in North-east from 1 Apr 2025 to 31 Mar 2026



These population estimates come from Call Detail Records (CDRs) (mobile phone usage data) and other datasets for reference and adjustments. The estimates provided are not survey estimates, key informant estimates or field observations. If you are unfamiliar with this data source please read our documentation which can be found at www.flowminder.org

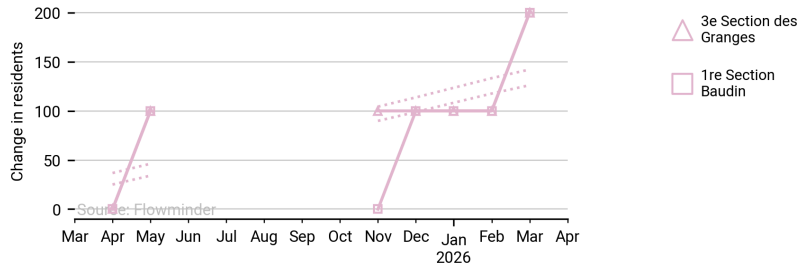
Monthly estimated population in North-west (01 Apr 25 - 31 Mar 26)

Sum of all communal sections incl. those with no CDRs

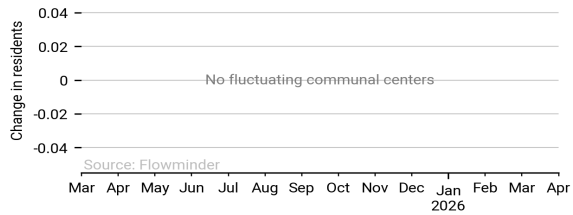


Communal sections in North-west with largest modelled change in population (01 Apr 25 - 31 Mar 26)

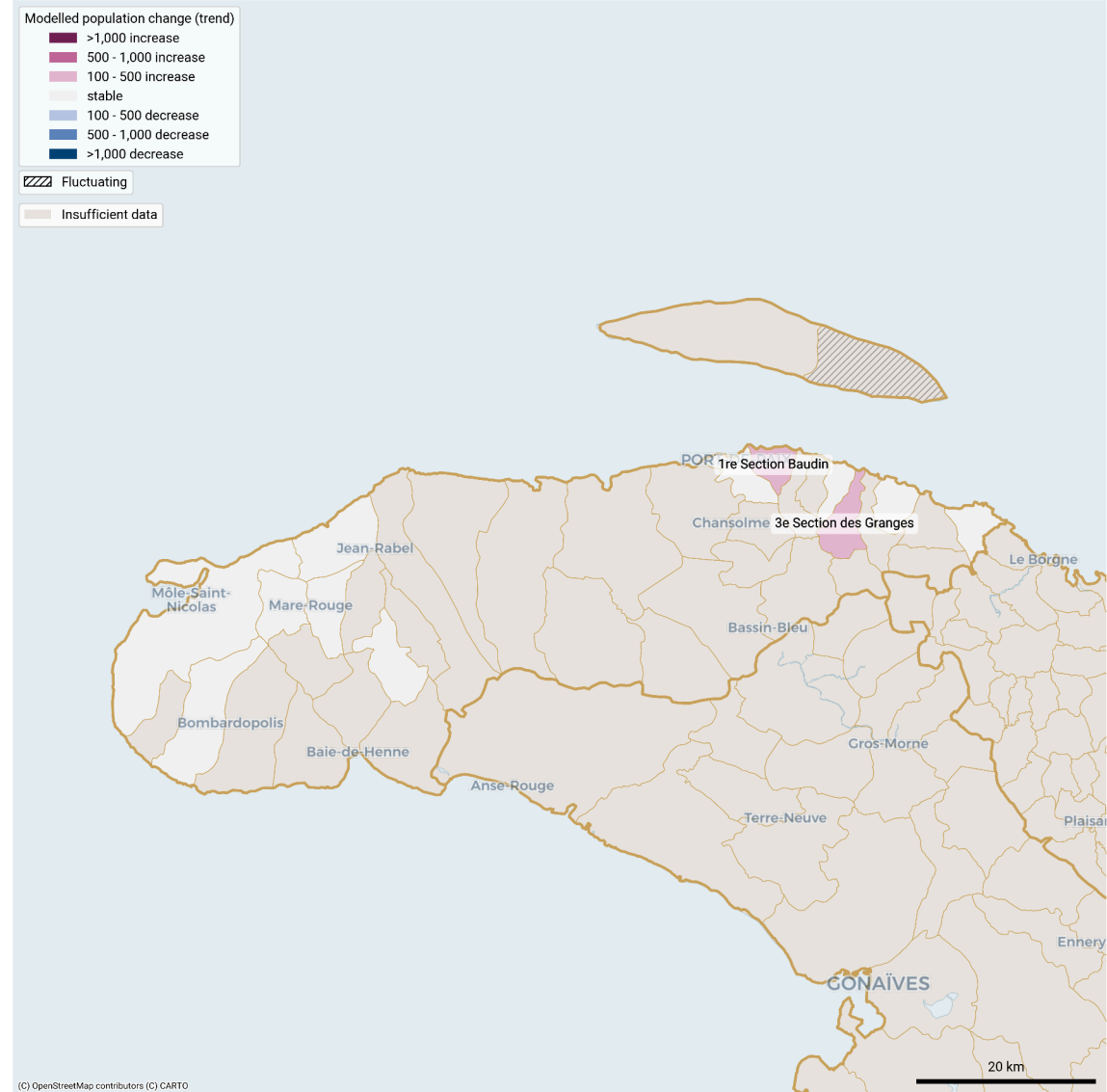
Solid line: estimates. Dotted line: model.



Largest month-to-month changes in resident population in fluctuating communal sections in North-west -department (01 Apr 25 - 31 Mar 26)



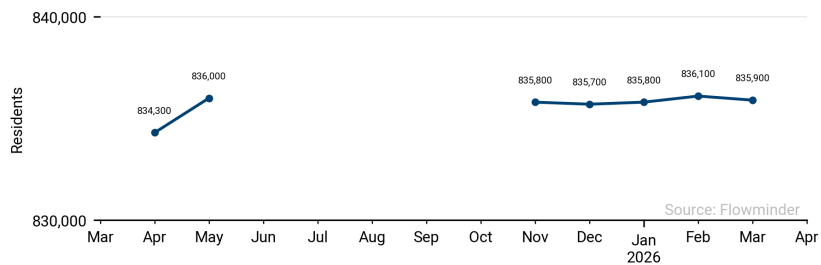
Population trends per communal section in North-west from 1 Apr 2025 to 31 Mar 2026



These population estimates come from Call Detail Records (CDRs) (mobile phone usage data) and other datasets for reference and adjustments. The estimates provided are not survey estimates, key informant estimates or field observations. If you are unfamiliar with this data source please read our documentation which can be found at www.flowminder.org

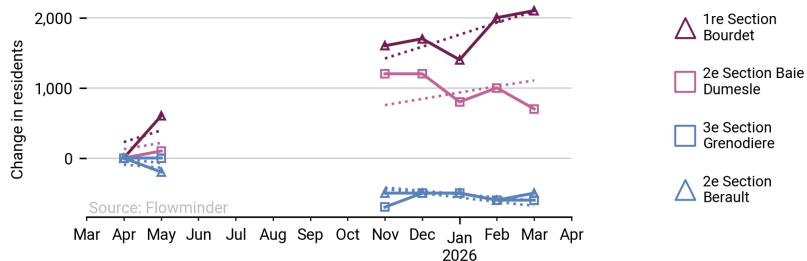
Monthly estimated population in South (01 Apr 25 - 31 Mar 26)

Sum of all communal sections incl. those with no CDRs

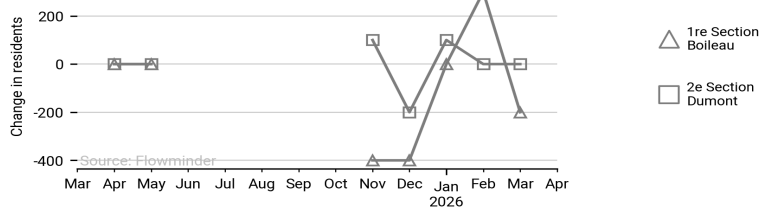


Communal sections in South with largest modelled change in population (01 Apr 25 - 31 Mar 26)

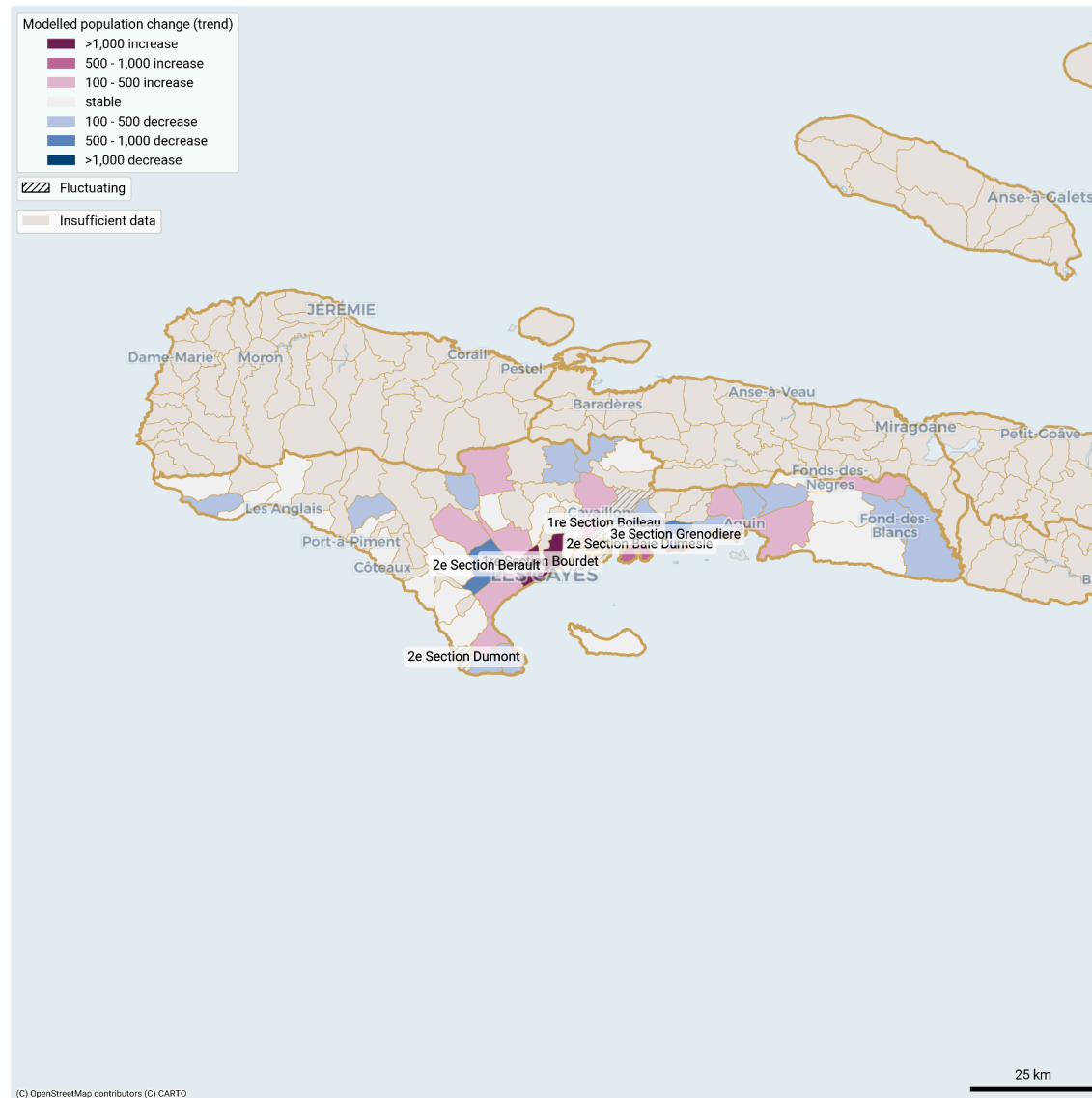
Solid line: estimates. Dotted line: model.



Largest month-to-month changes in resident population in fluctuating communal sections in South -department (01 Apr 25 - 31 Mar 26)



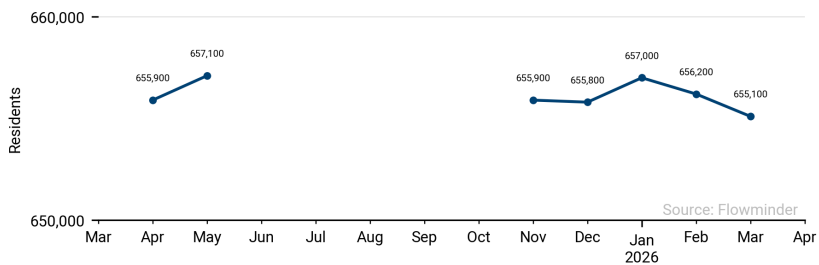
Population trends per communal section in South from 1 Apr 2025 to 31 Mar 2026



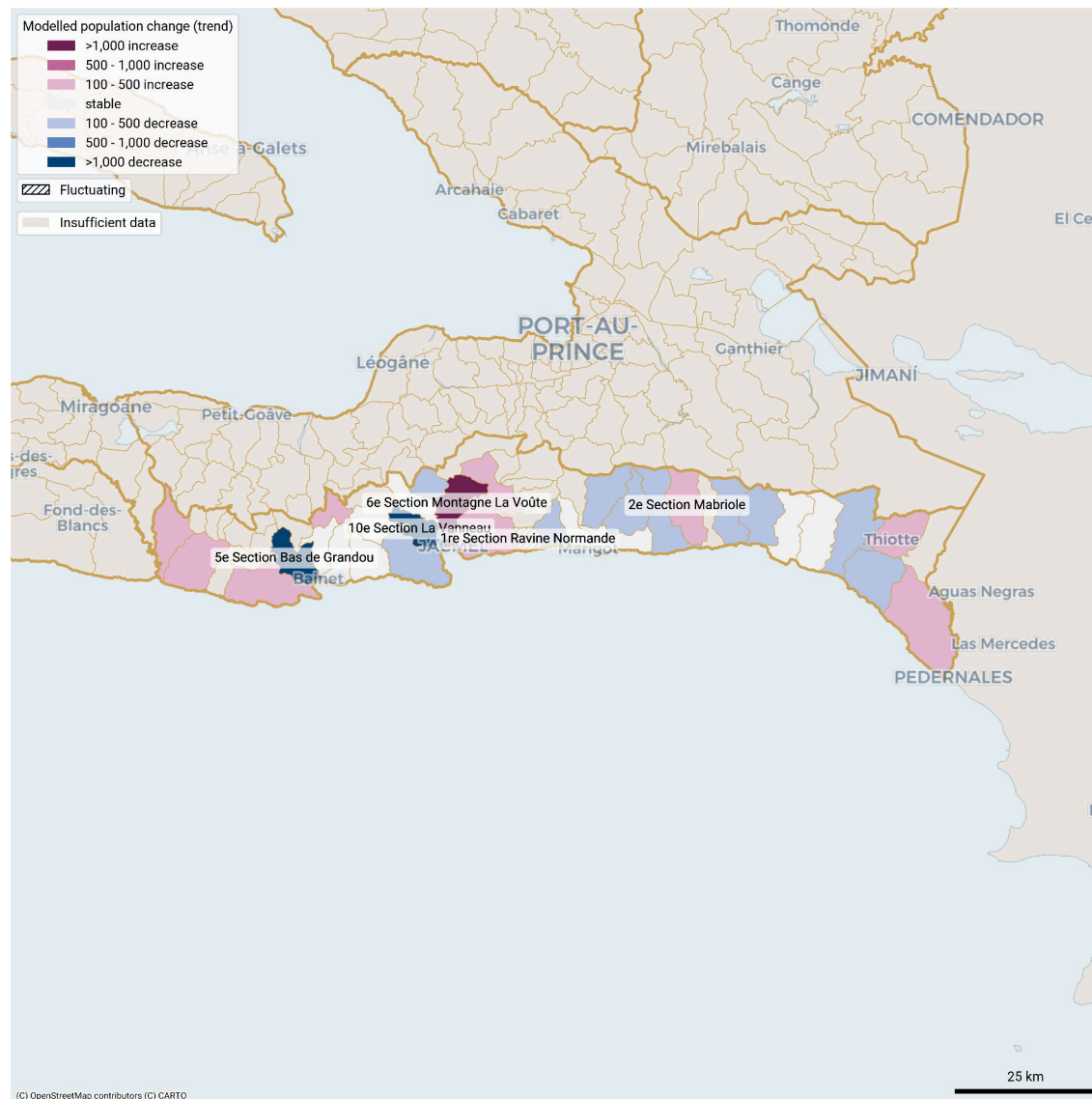
These population estimates come from Call Detail Records (CDRs) (mobile phone usage data) and other datasets for reference and adjustments. The estimates provided are not survey estimates, key informant estimates or field observations. If you are unfamiliar with this data source please read our documentation which can be found at www.flowminder.org

Monthly estimated population in South-east (01 Apr 25 - 31 Mar 26)

Sum of all communal sections incl. those with no CDRs

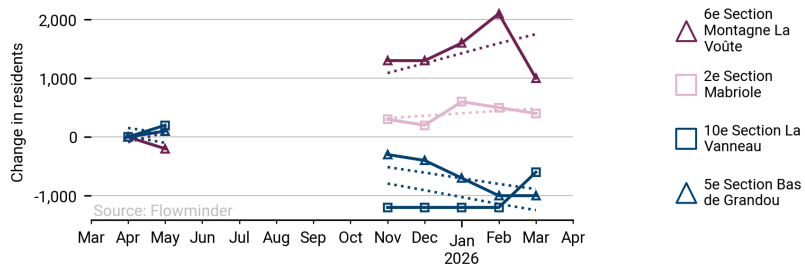


Population trends per communal section in South-east from 1 Apr 2025 to 31 Mar 2026

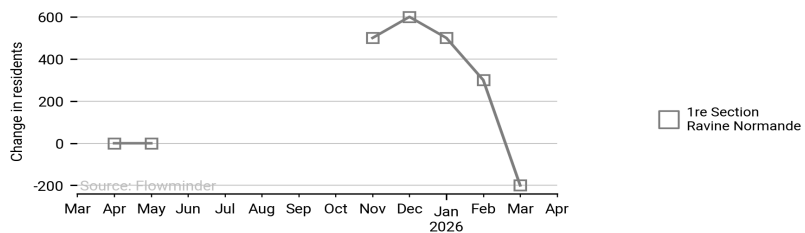


Communal sections in South-east with largest modelled change in population (01 Apr 25 - 31 Mar 26)

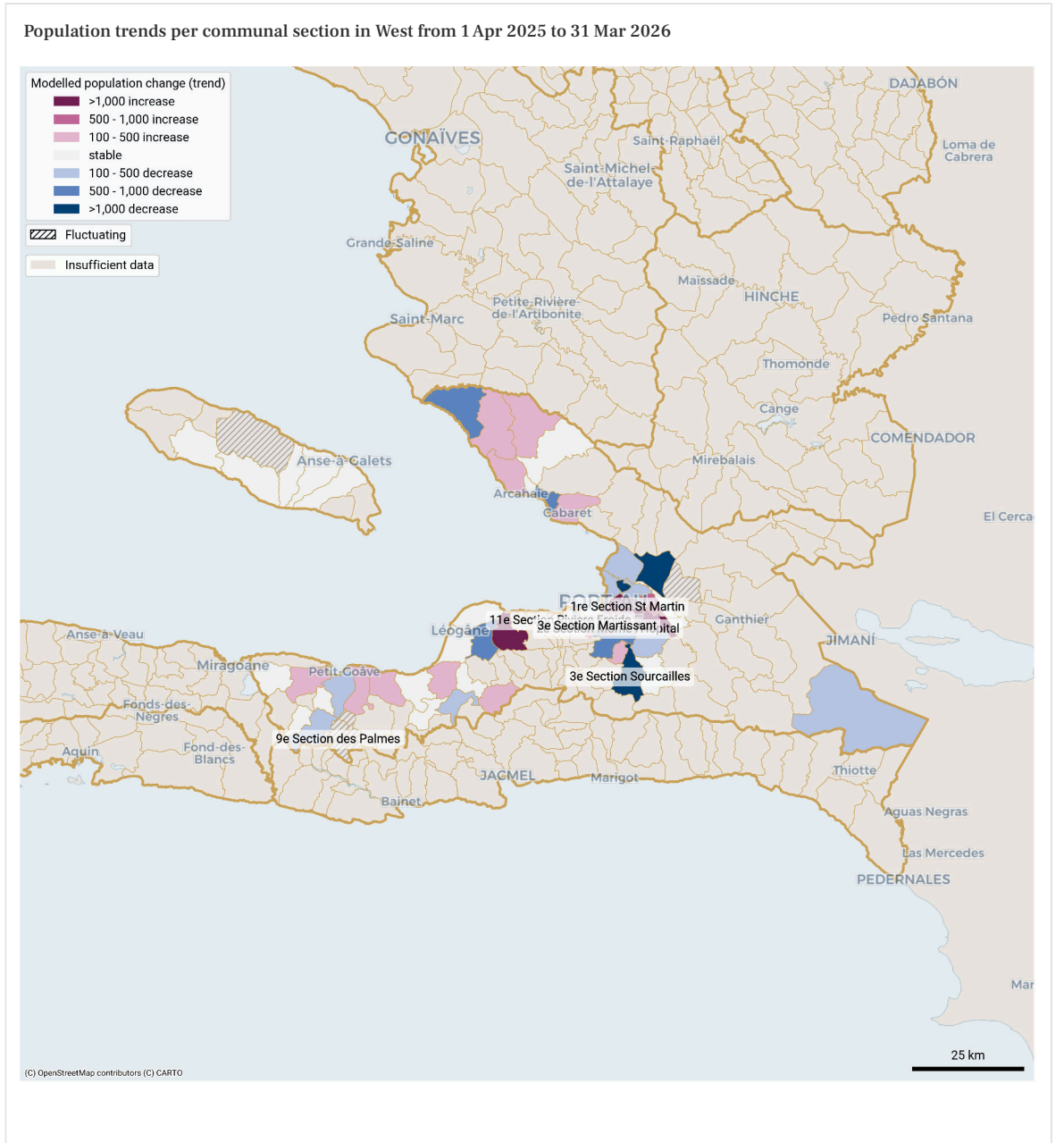
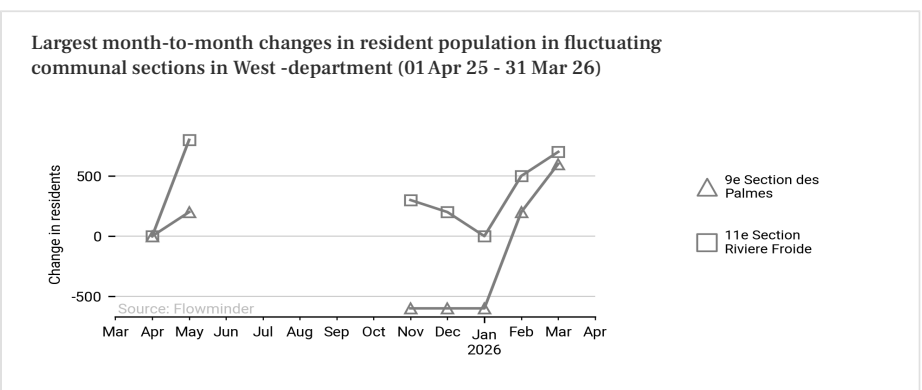
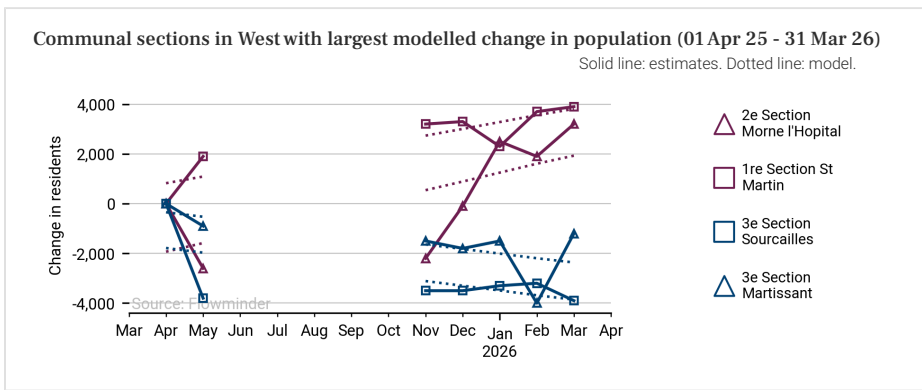
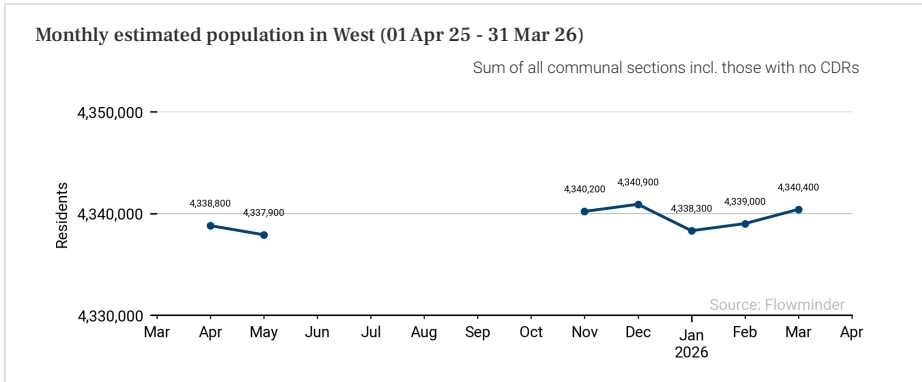
Solid line: estimates. Dotted line: model.



Largest month-to-month changes in resident population in fluctuating communal sections in South-east -department (01 Apr 25 - 31 Mar 26)



These population estimates come from Call Detail Records (CDRs) (mobile phone usage data) and other datasets for reference and adjustments. The estimates provided are not survey estimates, key informant estimates or field observations. If you are unfamiliar with this data source please read our documentation which can be found at www.flowminder.org



These population estimates come from Call Detail Records (CDRs) (mobile phone usage data) and other datasets for reference and adjustments. The estimates provided are not survey estimates, key informant estimates or field observations. If you are unfamiliar with this data source please read our documentation which can be found at www.flowminder.org

List of communal sections with estimated changes in population where |total change|> 100 (01 Apr 25 - 31 Mar 26): increasing, decreasing or fluctuating

Department	Communal section	Population estimate Mar 2026	Trend type in the last 12 months	Estimated change over the last 12 months	Largest estimated month-to-month change
Artibonite	1re Section Pont Tamarin	249,700	Fluctuating	-	300
Artibonite	6e Section Charrette	118,200	Increasing	2,800	-
Artibonite	2e Section Bassin	116,700	Increasing	500	-
Artibonite	3e Section Oge	73,000	Decreasing	-200	-
Artibonite	2e Section Bois Neuf (Saint-Marc)	64,600	Decreasing	-400	-
Artibonite	5e Section Bocozelle	63,500	Increasing	100	-
Artibonite	3e Section Labady	61,300	Decreasing	-2,200	-
Artibonite	1re Section Platana	33,700	Increasing	200	-
Artibonite	2e Section Fosse Naboth ou Duvalon	33,100	Decreasing	-300	-
Artibonite	4e Section Desarmes (Quartier de Desarmes)	30,400	Increasing	700	-
Artibonite	1re Section Villars	29,000	Increasing	400	-
Artibonite	5e Section Bastien	28,400	Increasing	800	-
Artibonite	8e Section l'Attalaye	27,800	Decreasing	-300	-
Artibonite	2e Section Belanger	26,000	Increasing	600	-
Artibonite	1re Section Deluge	19,800	Decreasing	-1,600	-
Artibonite	8e Section Ravine Gros Morne	17,100	Decreasing	-200	-
Artibonite	4e Section Lalouere	14,600	Decreasing	-600	-
Artibonite	3e Section Guillaume Moge (Quartier de Desarmes)	13,200	Increasing	100	-
Centre	1re Section Juanaria	77,900	Decreasing	-800	-
Centre	2e Section Juampas	36,000	Increasing	200	-
Centre	1re Section Cabral	29,200	Decreasing	-300	-
Centre	2e Section Lociane	28,000	Increasing	200	-
Centre	4e Section Aguahedionde (Rive Gauche)	20,700	Fluctuating	-	100

Department	Communal section	Population estimate Mar 2026	Trend type in the last 12 months	Estimated change over the last 12 months	Largest estimated month-to-month change
Centre	2e Section Roye-Sec	19,700	Fluctuating	-	100
Centre	2e Section Marmont	17,800	Decreasing	-200	-
Centre	La Hoye	17,000	Fluctuating	-	100
Grande-Anse	9e Section Fond Rouge Torbeck	33,700	Increasing	600	-
Grande-Anse	8e Section Fond Rouge Dahere	31,200	Increasing	1,200	-
Grande-Anse	3e Section Haute Guinaudee	21,100	Increasing	200	-
Grande-Anse	1re Section Basse Voldroque	18,500	Decreasing	-1,200	-
Grande-Anse	6e Section Îles Blanches	14,000	Decreasing	-400	-
Grande-Anse	2e Section Haute Voldroque	11,700	Increasing	200	-
Grande-Anse	2e Section Balisiers	11,600	Decreasing	-200	-
Grande-Anse	2e Section Espere	11,000	Decreasing	-600	-
Grande-Anse	3e Section Grand Vincent	8,700	Decreasing	-200	-
Grande-Anse	3e Section Îlet a Pierre Joseph	7,600	Decreasing	-200	-
Grande-Anse	1re Section Bernagousse	6,600	Increasing	500	-
Grande-Anse	5e Section Duchity	5,800	Decreasing	-100	-
Nippes	1re Section Chalon	44,200	Increasing	600	-
Nippes	2e Section Grande-Riviere-Joly	18,400	Decreasing	-100	-
Nippes	2e Section Tiby	14,100	Fluctuating	-	200
Nippes	2e Section Fond-des-Negres ou Morne Brice	12,300	Increasing	200	-
Nippes	4e Section St-Michel	12,100	Increasing	400	-
Nippes	2e Section Anse aux Pins	10,500	Decreasing	100	-
Nippes	1re Section Salagnac	10,100	Decreasing	-200	-
Nippes	1re Section l'Asile ou Nan Paul	9,300	Fluctuating	-	100

Preparedness | Mobility situation report - Haiti

Part 3 | Communal sections with changes in population estimates

List of communal sections with estimated changes in population where |total change|> 100 (01 Apr 25 - 31 Mar 26): increasing, decreasing or fluctuating

Department	Communal section	Population estimate Mar 2026	Trend type in the last 12 months	Estimated change over the last 12 months	Largest estimated month-to-month change
Nippes	4e Section la Plaine	9,100	Fluctuating	-	200
Nippes	3e Section Fond Tortue	8,700	Decreasing	-200	-
Nippes	2e Section Belle Riviere	8,000	Decreasing	-200	-
Nippes	3e Section Pernerle	7,900	Fluctuating	-	100
Nippes	1re Section Baconnois-Barreau	7,800	Fluctuating	-	1,400
Nippes	1re Section Raymond	7,500	Decreasing	-400	-
Nippes	3e Section Arnaud (Morcou)	7,400	Increasing	600	-
North	2e Section Haut du Cap	178,400	Decreasing	-1,200	-
North	5e Section Ravine Desroches	72,200	Increasing	300	-
North	1re Section Savannette	32,700	Decreasing	-200	-
North	3e Section Roucou	32,200	Increasing	200	-
North	1re Section Morne Rouge	18,900	Increasing	1,100	-
North	2e Section la Belle Mere	17,100	Increasing	1,900	-
North	2e Section Morne Pele	15,800	Decreasing	-200	-
North	2e Section Bonnet a l'Eveque	14,800	Increasing	200	-
North	8e Section Grande Riviere	10,100	Increasing	300	-
North	6e Section Bras Gauche	8,800	Decreasing	-300	-
North	1re Section Haut Limbe ou Acul Jeannot	4,000	Fluctuating	-	100
North-East	1re Section Haut Maribahoux	109,400	Increasing	600	-
North-East	1re Section Dumas	30,700	Increasing	200	-
North-West	1re Section Baudin	61,900	Increasing	200	-
North-West	3e Section des Granges	25,500	Increasing	200	-
South	1re Section Bourdet	97,500	Increasing	2,100	-

Department	Communal section	Population estimate Mar 2026	Trend type in the last 12 months	Estimated change over the last 12 months	Largest estimated month-to-month change
South	1re Section Boury	32,000	Increasing	400	-
South	3e Section Solon	26,800	Increasing	200	-
South	2e Section Champlois	20,100	Increasing	400	-
South	1re Section Boileau	16,600	Fluctuating	-	400
South	2e Section Martineau	16,300	Increasing	200	-
South	3e Section Brodequin	16,000	Increasing	700	-
South	2e Section Fonfrede	15,200	Increasing	200	-
South	2e Section Berault	14,200	Decreasing	-500	-
South	2e Section Baie Dumesle	14,000	Increasing	700	-
South	2e Section Bellevue	13,700	Decreasing	-200	-
South	3e Section Grenodiere	12,900	Decreasing	-600	-
South	1re Section Macean	12,300	Increasing	100	-
South	1re Section Blactote	11,500	Decreasing	-300	-
South	6e Section Solon	11,200	Decreasing	-100	-
South	5e Section Laroque	11,200	Decreasing	-200	-
South	3e Section Tibi Davezac	10,900	Decreasing	-300	-
South	7e Section Frangipane	10,500	Decreasing	-100	-
South	10e Section Guirand	10,500	Increasing	400	-
South	1re Section Tapion	9,100	Increasing	200	-
South	3e Section Trichet	8,300	Decreasing	-100	-
South	4e Section Zanglais	8,200	Decreasing	-300	-
South	2e Section Dumont	8,100	Fluctuating	-	300
South	5e Section Mare a Coiffe	7,900	Decreasing	-400	-

List of communal sections with estimated changes in population where |total change|> 100 (01 Apr 25 - 31 Mar 26): increasing, decreasing or fluctuating

Department	Communal section	Population estimate Mar 2026	Trend type in the last 12 months	Estimated change over the last 12 months	Largest estimated month-to-month change
South	2e Section Balais	7,200	Decreasing	-100	-
South	9e Section Fond des Blancs	7,100	Decreasing	-300	-
South	2e Section Debouchette	7,100	Decreasing	-100	-
South	2e Section Dory	6,600	Decreasing	100	-
South	5e Section Sucrierie Henri	5,300	Decreasing	-100	-
South-East	1re Section Bas Cap Rouge	86,000	Increasing	800	-
South-East	6e Section Montagne La Voûte	46,000	Increasing	1,000	-
South-East	1re Section Thiotte	28,200	Increasing	800	-
South-East	1re Section Boucan Guillaume	24,200	Increasing	400	-
South-East	11e Section La Montagne	19,100	Decreasing	-700	-
South-East	9e Section Bas des Gris Gris	17,700	Increasing	200	-
South-East	1re Section Colline des Chenes ou Bodarie	16,700	Decreasing	-400	-
South-East	1re Section Gris Gris	16,400	Increasing	200	-
South-East	2e Section Gaillard	16,400	Decreasing	0	-
South-East	3e Section Macary	16,300	Decreasing	-600	-
South-East	5e Section Bel Air	16,100	Decreasing	0	-
South-East	6e Section Jamais Vu	15,500	Increasing	300	-
South-East	4e Section Fond Jean Noël	15,300	Decreasing	-300	-
South-East	5e Section Bas de Grandou	13,400	Decreasing	-1,000	-
South-East	2e Section La Vallee de Baint ou Ternier	13,200	Increasing	500	-
South-East	2e Section Mabriole	12,600	Increasing	400	-
South-East	1re Section Ravine Normande	12,000	Fluctuating	-	500
South-East	3e Section Cochon Gras	11,600	Increasing	200	-

Department	Communal section	Population estimate Mar 2026	Trend type in the last 12 months	Estimated change over the last 12 months	Largest estimated month-to-month change
South-East	10e Section La Vanneau	10,400	Decreasing	-600	-
South-East	4e Section Corail Lamothe	10,400	Decreasing	-500	-
South-East	8e Section Bas Coq Chante	10,300	Decreasing	-300	-
South-East	1re Section Bais d'Orange	10,100	Decreasing	-400	-
South-East	2e Section Pot de Chambre	8,500	Decreasing	-500	-
West	1re Section St Martin	495,600	Increasing	3,900	-
West	1re Section Turgeau	480,600	Increasing	1,700	-
West	3e Section Martissant	284,000	Decreasing	-1,200	-
West	5e Section Bellevue Chardonniere	278,300	Increasing	2,200	-
West	10e Section Thor	270,400	Decreasing	-2,000	-
West	11e Section Riviere Froide	217,200	Fluctuating	-	800
West	2e Section Morne l'Hopital	172,900	Increasing	3,200	-
West	3e Section Etang du Jonc	132,200	Decreasing	-200	-
West	11e Section Ravine Seche	131,400	Decreasing	-500	-
West	2e Section des Varreux (Croix-Des-Bouquets)	129,300	Decreasing	-2,400	-
West	3e Section Bellevue	120,300	Decreasing	900	-
West	3e Section des Vases	108,200	Increasing	-100	-
West	1re Section des Varreux (Croix-Des-Bouquets)	79,400	Decreasing	-300	-
West	1re Section Boucassin (Cabaret)	67,700	Increasing	400	-
West	1re Section Tete-a-Boeuf	57,000	Increasing	300	-
West	9e Section Bizoton	52,900	Increasing	100	-
West	1re Section Fonds-Verrettes	52,400	Decreasing	-200	-
West	2e Section des Varreux (Cite Soleil)	45,900	Decreasing	-300	-

List of communal sections with estimated changes in population where |total change|> 100 (01 Apr 25 - 31 Mar 26): increasing, decreasing or fluctuating

Department	Communal section	Population estimate Mar 2026	Trend type in the last 12 months	Estimated change over the last 12 months	Largest estimated month-to-month change
West	3e Section Grande Rivere	40,200	Decreasing	-500	-
West	4e Section Bellevue	36,600	Increasing	800	-
West	1re Section des Varreux (Cite Soleil)	36,600	Decreasing	-1,100	-
West	1re Section Bino	35,100	Increasing	0	-
West	3e Section Sourcailles	29,200	Decreasing	-3,900	-
West	1re Section Montagne Noire	25,800	Increasing	-100	-
West	12e Section des Fourques	23,000	Increasing	500	-
West	2e Section Boucassin	22,800	Decreasing	-400	-
West	3e Section Petit Boucan	21,300	Increasing	1,600	-
West	4e Section Fond de Boudin	15,400	Decreasing	-200	-
West	5e Section Petit Bois	14,500	Fluctuating	-	100
West	4e Section Bellevue la Montagne	14,100	Decreasing	-200	-
West	10e Section Fond d'Oie	11,200	Increasing	0	-
West	6e Section Matheux	9,600	Increasing	100	-
West	8e Section des Platons	8,600	Decreasing	-400	-
West	4e Section Montrouis	8,300	Decreasing	-100	-
West	9e Section des Palmes	6,800	Fluctuating	-	800
West	2e Section Fonds Baptiste	4,400	Increasing	400	-
West	4e Section Grand Lagon	3,900	Fluctuating	-	100
West	5e Section Palmiste a Vin	3,500	Increasing	100	-
West	10e Section des Palmes	1,700	Fluctuating	-	400

Department	Communal section	Population estimate Mar 2026	Trend type in the last 12 months	Estimated change over the last 12 months	Largest estimated month-to-month change
------------	------------------	------------------------------	----------------------------------	--	---

Authors And Funders

This report was authored by the Flowminder Foundation.

This work was made possible by funding from the UK Foreign, Commonwealth and Development Office (FCDO).

Acknowledgements

This study was made possible thanks to the anonymised (aggregated) Call Detail Records provided by a mobile network operator in Haiti.

How to use this report

We provide population estimates that take into account population movements within Haiti, per month and per communal section. We report the average decreasing/increasing trends for each communal section for which we have data. However, it is important to note that multiple trends can be observed over the reported 12-month period. The current crisis has led to large population movements, particularly of internally displaced people (e.g. [IDP movement](#)), which can result in population statistics becoming outdated over a few months, and therefore impairing preparedness efforts (e.g. hazard population exposure estimation, needs assessment, service and contingency planning).

Indicators presented

Modelled change (trend): the predicted population change for the reporting period from all 12 monthly estimates, which smoothes out monthly variations (linear regression).

Estimated change: the difference in the estimated population between the first and last months of the 12 month reporting period, which does not reflect any monthly variation within.

For communal sections with fewer than 10 months of resident estimates during the reporting period, we do not make a trend classification (insufficient data). For monthly population estimates at the department level, we carry forward the latest estimate to fill missing months in a communal section so that the aggregated changes at the department level are only based on observed CDR-derived mobility.

For communal sections with fast changing populations, we categorised them as 'increasing', 'decreasing', 'stable', when there is little to no change; or as 'fluctuating' when large month-to-month changes prevented us from detecting a trend.

Report's data

This report uses our v4.0 dataset ([documentation](#), [release notes](#)), available at <https://haiti.mobility-dashboard.org>.

This report and its contents may only be shared with attribution to the Flowminder Foundation and Digicel Haiti. Adaptation is permitted as long as the changes are indicated and the Flowminder Foundation and Digicel Haiti are cited. Use of the report and its contents is limited to humanitarian and development purposes.

Disclaimer of Warranties and Limitation of Liability: To the extent possible, Flowminder and Digicel offer this report and its contents as-is and as-available, and make no representations or warranties of any kind concerning this report and its contents, whether express, implied, statutory, or other. This includes, without limitation, warranties of title, merchantability, fitness for a particular purpose, non-infringement, absence of latent or other defects, accuracy, or the presence or absence of errors, whether or not known or discoverable.

To the extent possible, in no event will Flowminder or Digicel be liable on any legal theory (including, without limitation, negligence) or otherwise for any direct, special, indirect, incidental, consequential, punitive, exemplary, or other losses, costs, expenses, or damages arising out of the use of the report or its contents, even if Flowminder or Digicel have been advised of the possibility of such losses, costs, expenses, or damages. The disclaimer of warranties and limitation of liability provided above shall be interpreted in a manner that, to the extent possible, most closely approximates an absolute disclaimer and waiver of all liability.

Data privacy & governance

No personal data, such as an individual's identity, demographics, location, contacts or movements, is made available to the government or any other third party at any time. All results produced by Flowminder are aggregated results (for example, subscriber density in a given municipality), which means that they do not contain any information about individual subscribers.

This data is fully anonymised. This approach complies with the European Union's General Data Protection Regulation (EU GDPR2016/679). Data is processed on a server installed behind the mobile network operator's firewall in Haiti, and no personal data leaves the operator's premises.

Data considerations

The estimates shown are our best current assessment of movements. However, there are a number of uncertainties. The information should be interpreted together with other available evidence.

For more information about our methods, please read our Haiti Mobility Data Indicators documentation on residents and relocation at [here](#).

Data Sources

Pseudonymised Call Detail Records: Digicel Haiti

CDR-based data products: Flowminder

Phone survey data: [HT PS 2023](#)

Field survey data: [MSNA 2022](#) and [MSNA 2024](#)

Population estimates: [UN data](#); IHSI 2015; and IHSI 2020.

The following citation is required when using the data and information included in this report:

Flowminder Foundation, Apr 2026: Preparedness report, Mobility situation in Haiti from 01 Apr 2025 to 31 Mar 2026

For more information on the terms and conditions of Flowminder's reports and information products, please visit flowminder.org