

Displaced subscribers from violence-affected neighbourhoods, Carrefour-Feuilles and Savanes Pistache: Situation as of 04 September 2023

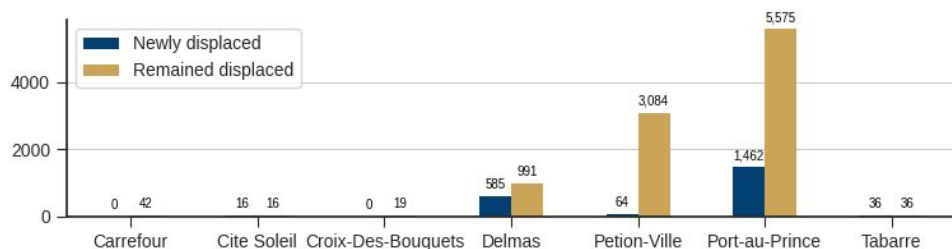
Executive summary:

Heightened gang violence since 12 August 2023 in the neighbourhoods of Carrefour-Feuilles and Savanes Pistache in Port-au-Prince continues to trigger significant population movements out of these areas.

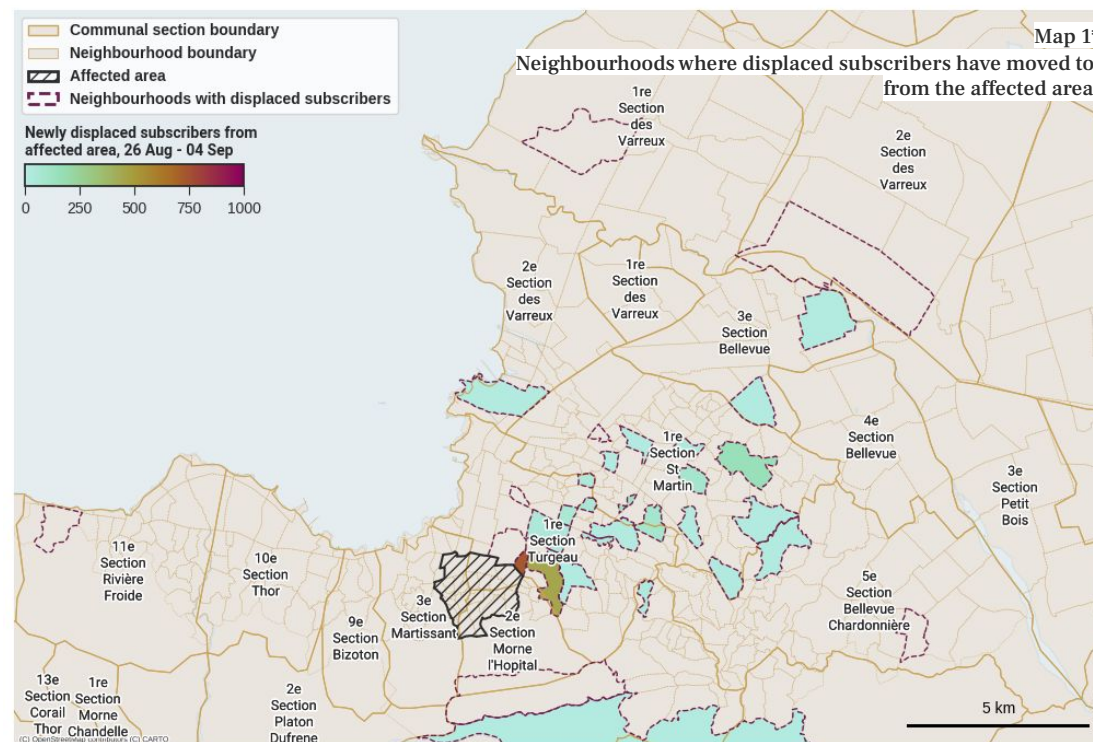
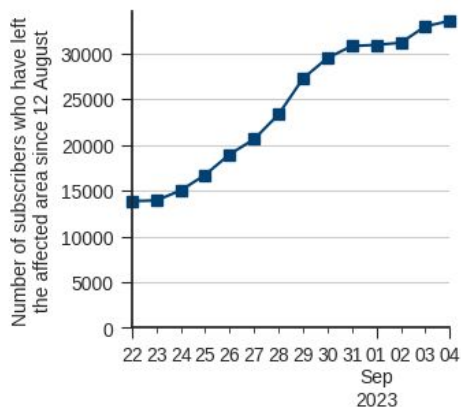
Based on anonymous aggregated mobile phone data, we estimate that up to 32,075 subscribers previously residing in the affected areas have since the start of the crisis left the area because of gang violence (most - if not all - are likely to be displaced and in vulnerable situations). Out of these, we can estimate that 9,770 subscribers are currently staying, primarily, in the neighbourhoods of Avenue Christophe (adjacent to Bas Peu de Chose) and Pacot in the Port-au-Prince commune, and Desire - Boutilier in the commune of Petion-Ville - see graph 1 and table 1), in line with IOM-DTM observations from [05 September](#). For the remaining 22,000 subscribers likely displaced, most are observed to remain within the Port-au-Prince commune, but in neighbourhoods we were unable to precisely determine (whether Avenue Christophe and Pacot and/or other neighbourhoods in the commune).

In the ten-day period from 26 August to 04 September, we estimate that 3,100 subscribers have been newly displaced, notably to Avenue Christophe and Pacot (commune of Port-au-Prince) and Siloe (commune of Delmas) (see table 1). For comparison, they were 2,000 between 19-26 August (8-day study) and 7,500 between 12-26 August (8-day study), showing that the situation is not yet stabilising.

Graph 1: Number of newly displaced subscribers (blue) and subscribers remaining displaced (gold) into neighbourhoods which we can precisely determine, summed per commune. We also observe that an additional 22,000 subscribers may be displaced, and most may be within the commune of Port-au-Prince.



Graph 2 | Total displaced subscribers: High bound estimate of the number of subscribers who have left the affected area since 12 August because of gang violence, and may still be displaced to date.



<p>Total displaced subscribers since 12 August (high bound estimate)</p> <p>32,075</p>	<p>Total displaced subscribers in known neighbourhoods since 12 August</p> <p>9,770</p>	<p>Newly displaced subscribers out of the affected area between 26 August and 04 September</p> <p>3,051</p>
--	---	---

*Map for illustration purposes only. The boundaries and names shown and the designations featured do not imply official endorsement or acceptance by Flowminder, its partners, or donors.

Table 1: Total displaced subscribers (since 12 August) into known neighbourhoods, and newly displaced subscribers between 26 August and 04 September

Rank	Commune	Communal Section	Neighbourhood	Newly displaced subscribers this week	Total (Remaining) displaced
1	Port-au-Prince	1re Section Turgeau	Avenue Christophe	730.0	3,017
2	Petion-Ville	3ème Etang du Jong	Desire - Bouillier	-	2,510
3	Port-au-Prince	1re Section Turgeau	Pacot	452	1,044
4	Port-au-Prince	1re Section Turgeau	Bois Verna	49	606
5	Petion-Ville	3ème Etang du Jong	Thomassin - Fermathe - Fort Jacques	16	509
6	Delmas	1ère Saint martin	Cite Caraibes	-	478
7	Port-au-Prince	1re Section Turgeau	Poste Marchand	-	473
8	Port-au-Prince	1re Section Turgeau	Bas Peu de Chose	-	204
9	Delmas	1ère Saint martin	Siloe	154	154 (*)
10	Delmas	1ère Saint martin	Delmas 32 - Lakou New York - REMY	123	123 (*)
11	Delmas	1ère Saint martin	Rousseau - Dupre - Village ULDECA	83	87
12	Delmas	1ère Saint martin	Delmas 40b	84	84 (*)
13	Port-au-Prince	1re Section Turgeau	Christ-Roi - Nan Moise	65	65 (*)
14	Port-au-Prince	1re Section Turgeau	Revine Pintade	58	58 (*)
15	Carrefour	11ème Rivière Froide	Le Lambi	-	42
16	Port-au-Prince	1re Section Turgeau	Haut Nazon	39	39 (*)
17	Port-au-Prince	1re Section Turgeau	Canape-Vert (Lalue)	37	37 (*)

Rank	Commune	Communal Section	Neighbourhood	Newly displaced subscribers this week	Total (Remaining) displaced
18	Delmas	1ère Saint martin	Peligre - Charbonnière	35	35 (*)
19	Petion-Ville	3ème Etang du Jong	Bremond	31	31 (*)
20	Delmas	1ère Saint martin	Jacquet Tybulle	27	27 (*)
21	Delmas	1ère Saint martin	Delmas 17	19	26
22	Delmas	1ère Saint martin	Delmas 75	21	21 (*)
23	Delmas	1ère Saint martin	Valme	20	20 (*)
24	Delmas	1ère Saint martin	Puits Blain	19	19 (*)
25	Tabarre	3ème Bellevue	Mais Gate - Clercine 8	19	19 (*)
26	Petion-Ville	5ème Bellevue Chardonnière	Pernier 24	-	17
27	Tabarre	3ème Bellevue	Galette Goureau	17	17 (*)
28	Petion-Ville	5ème Bellevue Chardonnière	Puits Blain	17	17 (*)
29	Port-au-Prince	1re Section Turgeau	Bourdon	16	16 (*)
30	Cite Soleil	1ère Section des Varreux	Hasco - Village Democratie	16	16 (*)
31	Port-au-Prince	1re Section Turgeau	Babiole - Debussy - Haut Turgeau	16	16 (*)
32	Croix-Des-Bouquets	1ère des Varreux	Village La Renaissance - Les Orangers	-	< 15
33	Croix-Des-Bouquets	2ème des Varreux	Santo	-	< 15

(*) Indicates that subscribers likely displaced in this neighbourhood all arrived recently (between 26 August and 04 September)

Data & data privacy

No personal data, such as an individual's identity, demographics, location, contacts or movements, **is made available** to the government or any other third party at any time. All results produced by Flowminder are aggregated results (for example, subscriber density in a given municipality), which means that they do not contain any information about individual subscribers. **This data is fully anonymised**. This approach complies with the European Union's General Data Protection Regulation (EU GDPR 2016/679). Data is processed on a server installed behind the mobile network operator's firewall in Haiti, and no personal data leaves the operator's premises.

Data considerations

The estimates shown are our best current assessment of movements from non-traditional data: anonymised data from a mobile network operator. However, there are a number of uncertainties. The information should be interpreted together with other available evidence.

Acknowledgements

This study was made possible thanks to the anonymised data provided by a mobile network operator in Haiti. The International Organization for Migration (IOM) and the United Nations Office for the Coordination of Humanitarian Affairs (OCHA) are acknowledged for their advice, feedback, and information on the affected areas and neighbourhoods of Haiti.

This work has also been possible thanks to funding by the Agence Française de Développement, the William and Flora Hewlett Foundation and the Swiss Federal Department of Foreign Affairs (FDFA) that support current Flowminder's activities in Haiti, where Flowminder focuses on enabling the increased access to and use of mobile operator data in ways that are ethically sound, financially viable, and sustainable.

We welcome feedback to help us improve future reports and requests for specific types of analysis

Please email info@flowminder.org with any feedback and suggestions, or if you have any specific analytical requirements we can support.

This report and its contents may only be shared with attribution to the Flowminder Foundation. Adaptation is permitted as long as the changes are indicated and the Flowminder Foundation is cited. Use of the report and its contents is limited to humanitarian and development purposes.

Disclaimer of Warranties and Limitation of Liability: *To the extent possible, Flowminder offers this report and its contents as-is and as-available, and make no representations or warranties of any kind concerning this report and its contents, whether express, implied, statutory, or other. This includes, without limitation, warranties of title, merchantability, fitness for a particular purpose, non-infringement, absence of latent or other defects, accuracy, or the presence or absence of errors, whether or not known or discoverable.*

To the extent possible, in no event will Flowminder be liable on any legal theory (including, without limitation, negligence) or otherwise for any direct, special, indirect, incidental, consequential, punitive, exemplary, or other losses, costs, expenses, or damages arising out of the use of the report or its contents, even if Flowminder has been advised of the possibility of such losses, costs, expenses, or damages. The disclaimer of warranties and limitation of liability provided above shall be interpreted in a manner that, to the extent possible, most closely approximates an absolute disclaimer and waiver of all liability.