

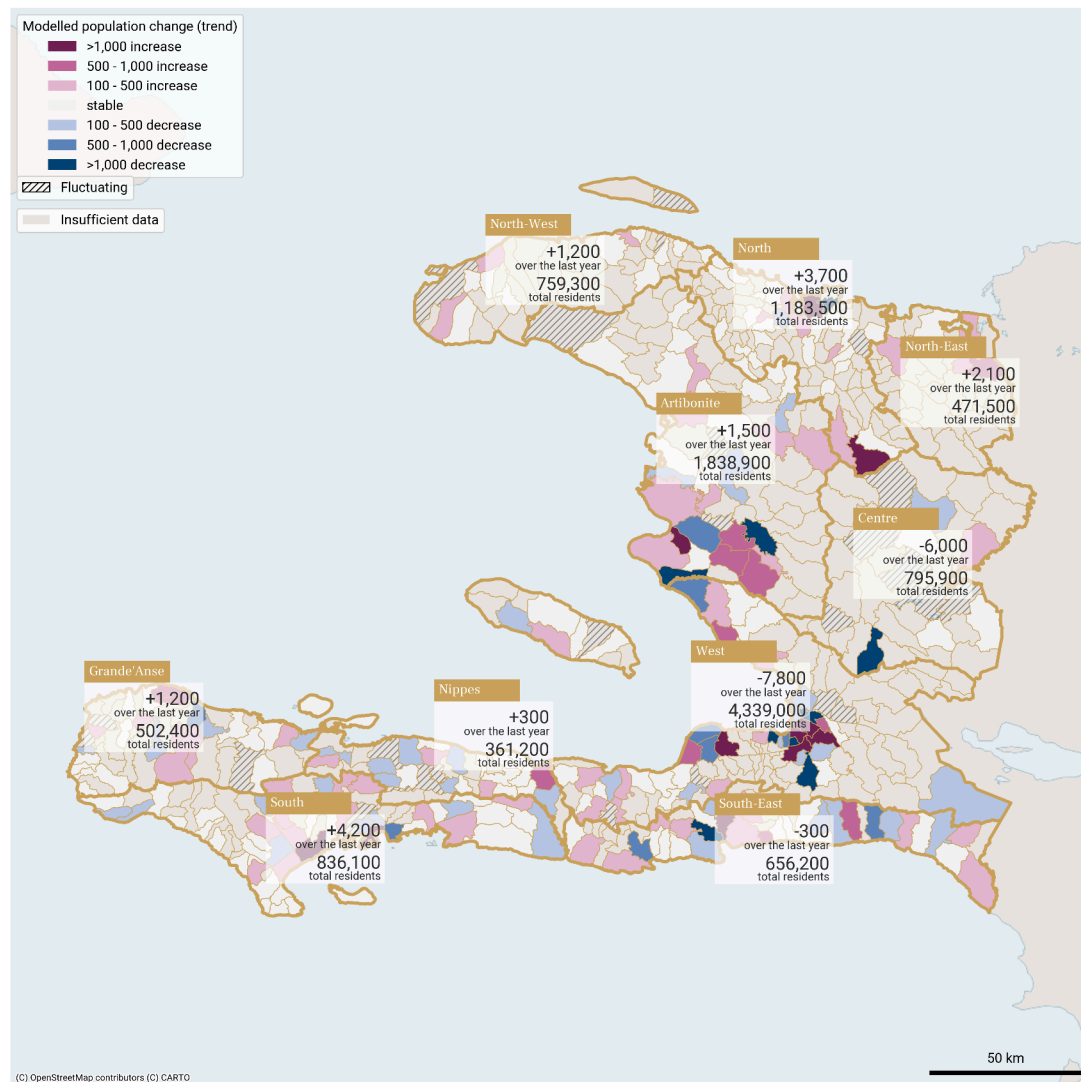
Communal sections with the largest modelled change in population between 01 Mar 25 - 28 Feb 26

Department	Communal section	Population estimate Feb 2026	Trend type in the last 12 months	Estimated change over the last 12 months
West	2e Section Morne l'Hôpital	171,600	Decreasing	-17,400
West	1re Section St Martin	495,400	Increasing	9,100
West	5e Section Bellevue Chardonniere	278,800	Increasing	6,900
Centre	4e Section Crete Brûlée	50,500	Decreasing	-4,600
West	3e Section Etang du Jonc	132,600	Increasing	3,200

Key observations for the period 01 Mar 25 - 28 Feb 26

- The Flowminder-Digicel pipeline was interrupted from June to October 2025, which restricted analysis of mobility trends during that time period.
- In the ZMPAP, from March to April 2025 the population of 2e Section Morne l'Hôpital (Port-au-Prince) decreased sharply by more than 20,000 people, and following the network outages in the last four months (November 2025 to February 2026) slightly increased.
 - Meanwhile, the population of 1re Section St Martin (Delmas) and 5e Section Bellevue Chardonniere (Pétion-Ville) have kept increasing in the past 12 months.
- The population of the West department overall dropped by an estimated 7,800 people since March 2025.
 - The largest drop in population outside ZMPAP is in 3e Section Sourcailles (Kenscoff) (-2,700 people).
- Outside West, the population of Centre dropped by an estimated 6,000 people in the last year with the largest decrease in the population of 4e Section Crête Brûlée (Mirebalais) (-4,600 people). In Artibonite, the population of 3e Section Labady (Petite Rivière de l'Artibonite) has decreased in the past 12 months (-2,100 people).
- All remaining departments except South-East had increase in the population over the last year, with largest increases in both South and North
 - In South departments the largest increases of population are observed in 1re Section Bourdet (Les Cayes) (+2,000 people) and 2e Section Baie Dumesle (Saint Louis du Sud) (+1,200 people).
 - In North departments the largest increases of populations are observed in 2e Section la Belle Mère (Pignon) (+2,000 people).

Modelled population trends (communal sections) and change estimates (departments) between 1 Mar 2025 and 28 Feb 2026

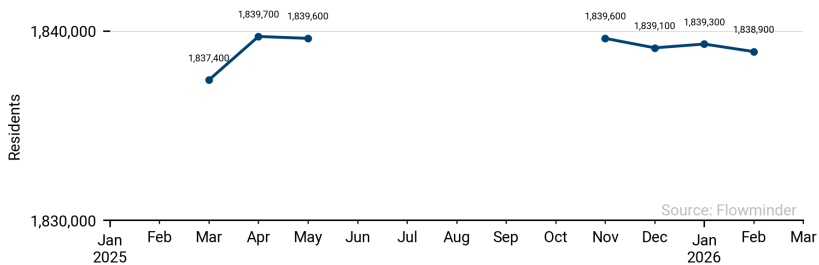


(C) OpenStreetMap contributors (C) CARTO

These population estimates come from Call Detail Records (CDRs) (mobile phone usage data) and other datasets for reference and adjustments. The estimates provided are not survey estimates, key informant estimates or field observations. If you are unfamiliar with this data source please read our documentation which can be found at www.flowgeek.org

Monthly estimated population in Artibonite (01 Mar 25 - 28 Feb 26)

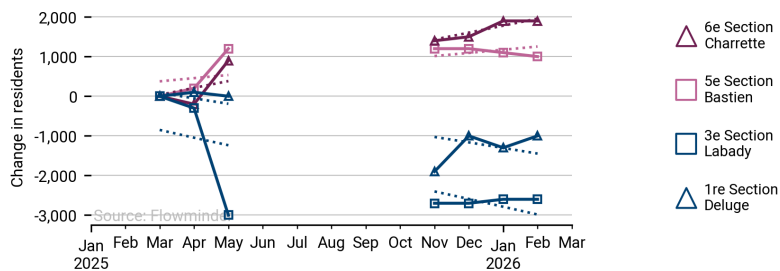
Sum of all communal sections incl. those with no CDRs



Source: Flowminder

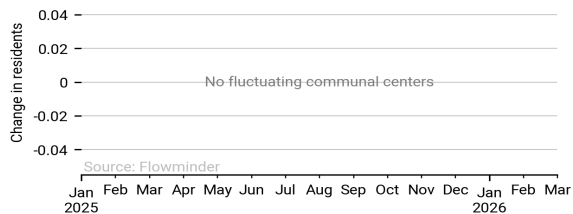
Communal sections in Artibonite with largest modelled change in population (01 Mar 25 - 28 Feb 26)

Solid line: estimates. Dotted line: model.



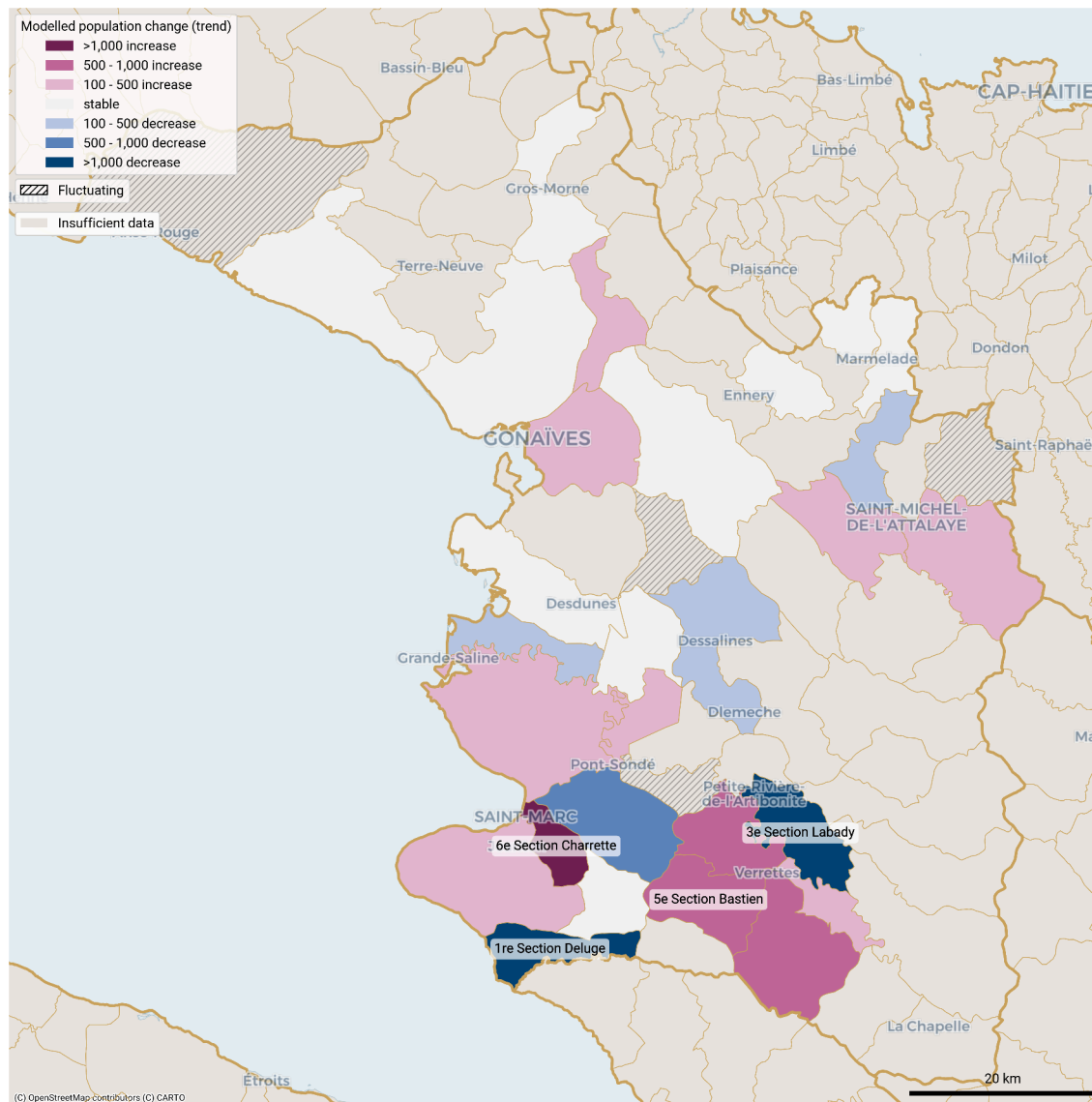
Source: Flowminder

Largest month-to-month changes in resident population in fluctuating communal sections in Artibonite -department (01 Mar 25 - 28 Feb 26)



Source: Flowminder

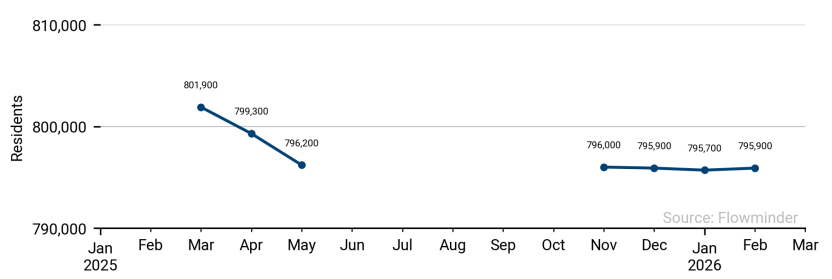
Population trends per communal section in Artibonite from 1 Mar 2025 to 28 Feb 2026



These population estimates come from Call Detail Records (CDRs) (mobile phone usage data) and other datasets for reference and adjustments. The estimates provided are not survey estimates, key informant estimates or field observations. If you are unfamiliar with this data source please read our documentation which can be found at www.flowminder.org

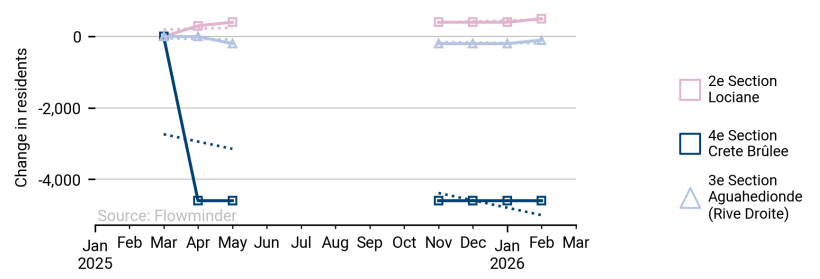
Monthly estimated population in Centre (01 Mar 25 - 28 Feb 26)

Sum of all communal sections incl. those with no CDRs

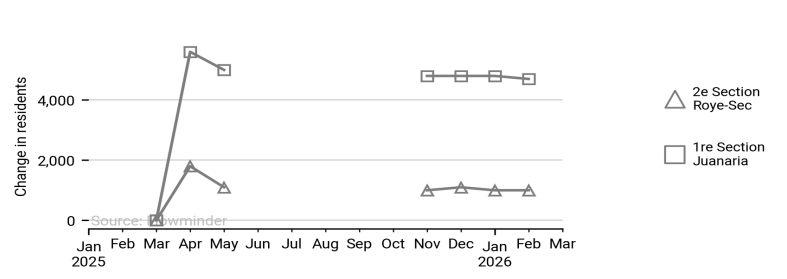


Communal sections in Centre with largest modelled change in population (01 Mar 25 - 28 Feb 26)

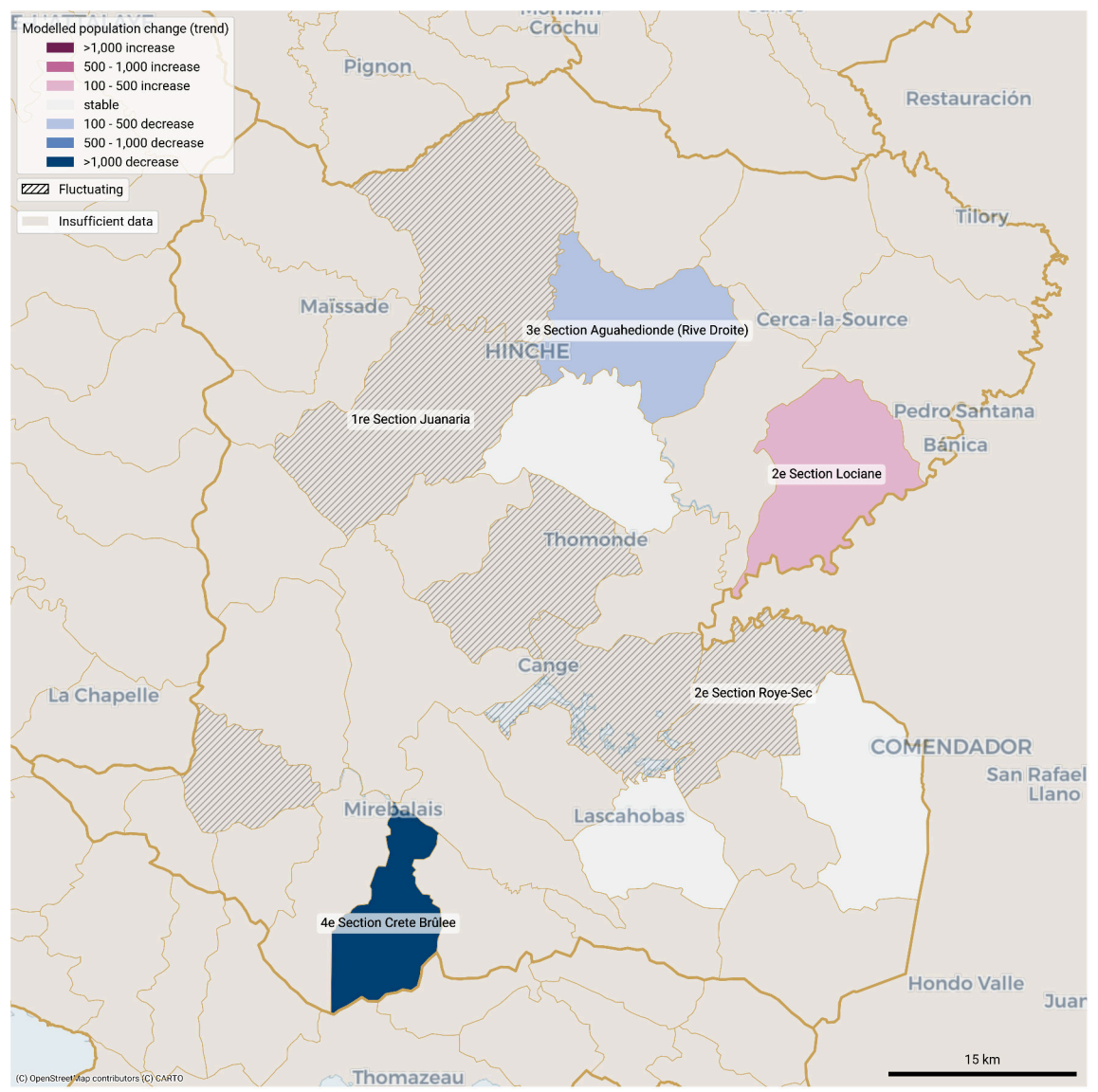
Solid line: estimates. Dotted line: model.



Largest month-to-month changes in resident population in fluctuating communal sections in Centre -department (01 Mar 25 - 28 Feb 26)



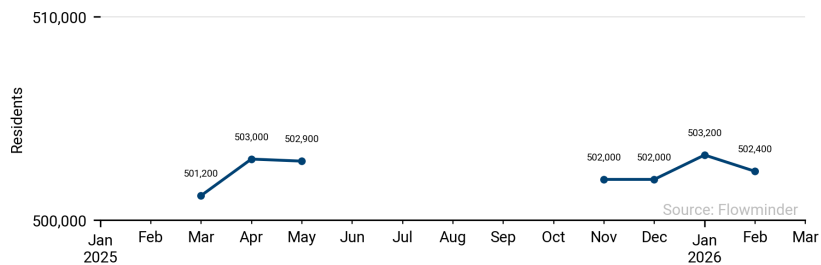
Population trends per communal section in Centre from 1 Mar 2025 to 28 Feb 2026



These population estimates come from Call Detail Records (CDRs) (mobile phone usage data) and other datasets for reference and adjustments. The estimates provided are not survey estimates, key informant estimates or field observations. If you are unfamiliar with this data source please read our documentation which can be found at www.flowminder.org

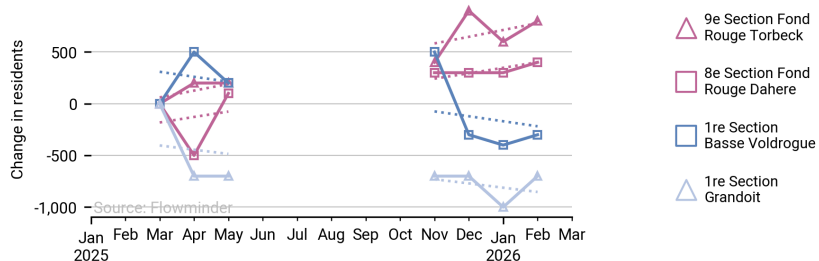
Monthly estimated population in Grande'Anse (01 Mar 25 - 28 Feb 26)

Sum of all communal sections incl. those with no CDRs

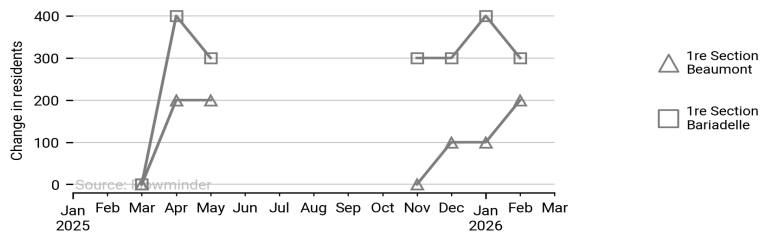


Communal sections in Grande'Anse with largest modelled change in population (01 Mar 25 - 28 Feb 26)

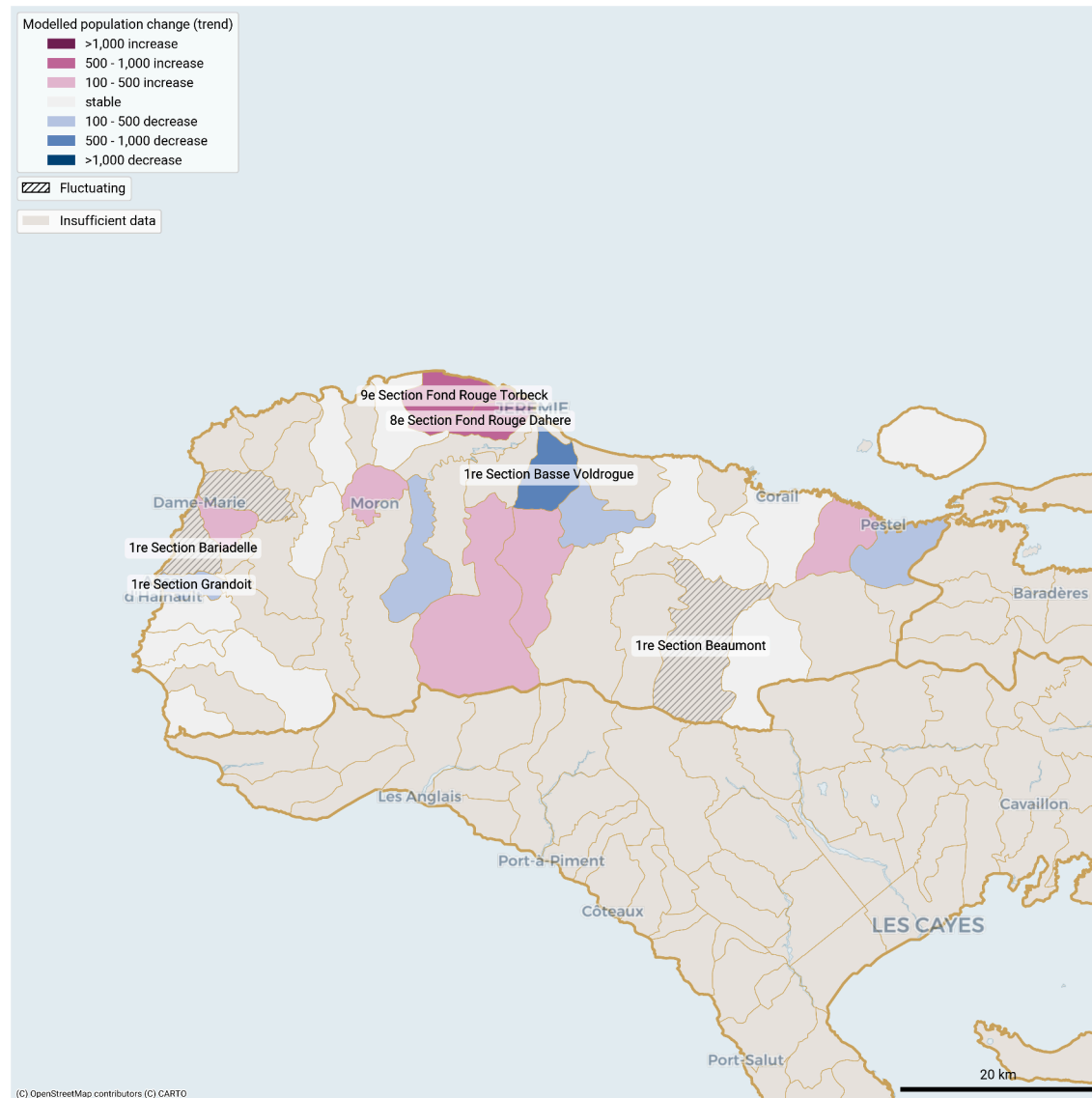
Solid line: estimates. Dotted line: model.



Largest month-to-month changes in resident population in fluctuating communal sections in Grande'Anse -department (01 Mar 25 - 28 Feb 26)



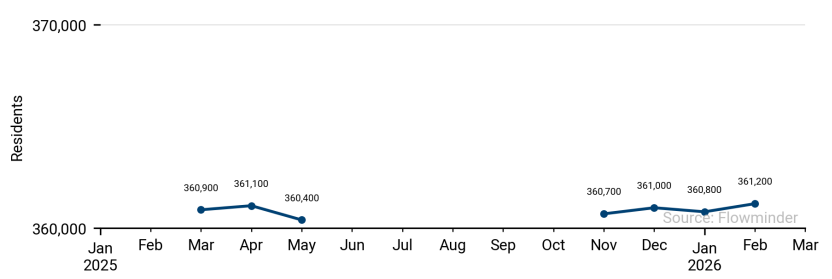
Population trends per communal section in Grande'Anse from 1 Mar 2025 to 28 Feb 2026



These population estimates come from Call Detail Records (CDRs) (mobile phone usage data) and other datasets for reference and adjustments. The estimates provided are not survey estimates, key informant estimates or field observations. If you are unfamiliar with this data source please read our documentation which can be found at www.flowminder.org

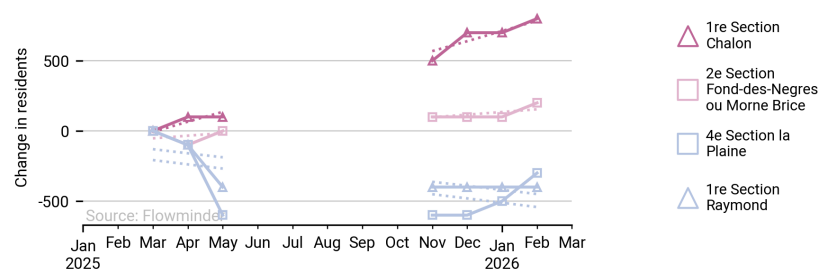
Monthly estimated population in Nippes (01 Mar 25 - 28 Feb 26)

Sum of all communal sections incl. those with no CDRs

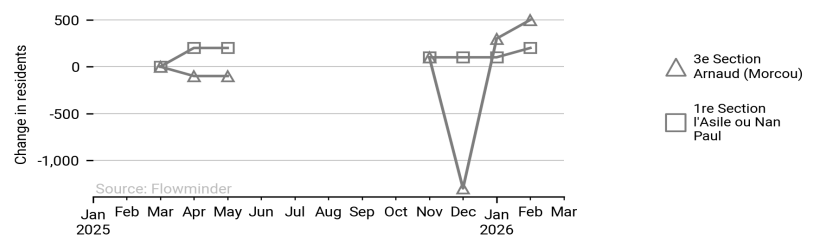


Communal sections in Nippes with largest modelled change in population (01 Mar 25 - 28 Feb 26)

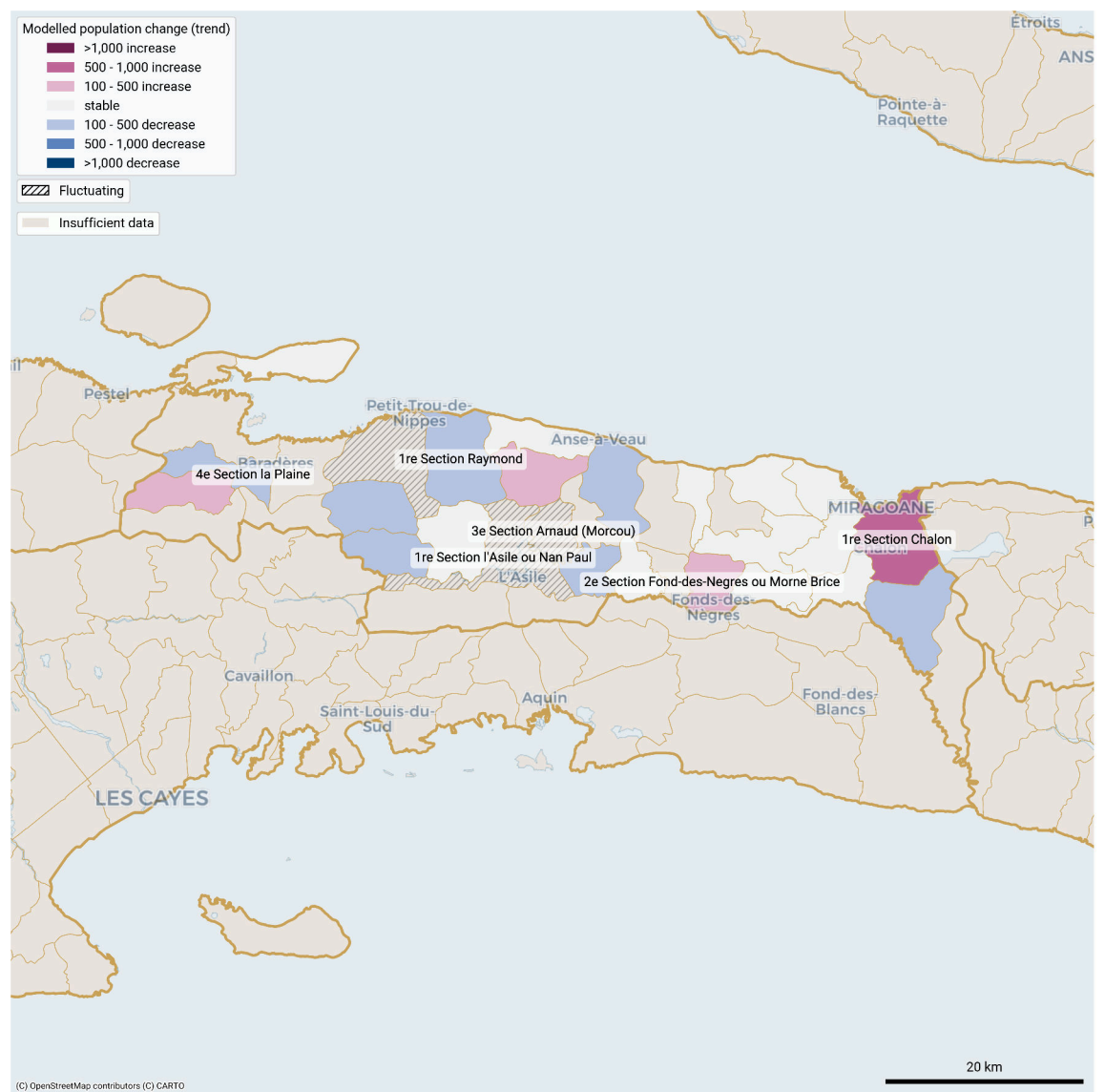
Solid line: estimates. Dotted line: model.



Largest month-to-month changes in resident population in fluctuating communal sections in Nippes -department (01 Mar 25 - 28 Feb 26)



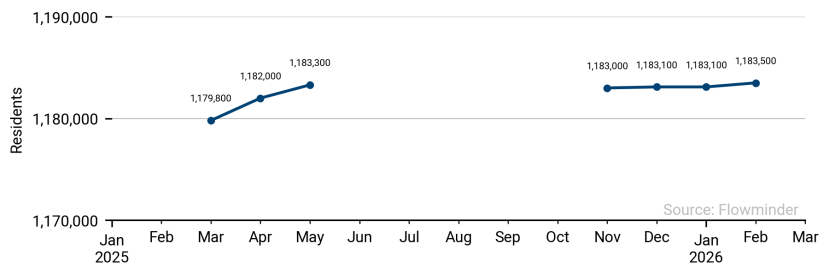
Population trends per communal section in Nippes from 1 Mar 2025 to 28 Feb 2026



These population estimates come from Call Detail Records (CDRs) (mobile phone usage data) and other datasets for reference and adjustments. The estimates provided are not survey estimates, key informant estimates or field observations. If you are unfamiliar with this data source please read our documentation which can be found at www.flowminder.org

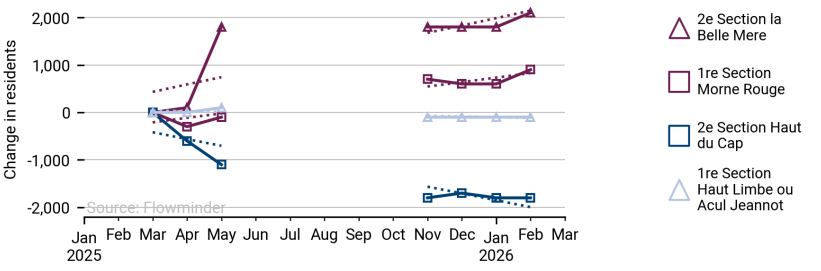
Monthly estimated population in North (01 Mar 25 - 28 Feb 26)

Sum of all communal sections incl. those with no CDRs

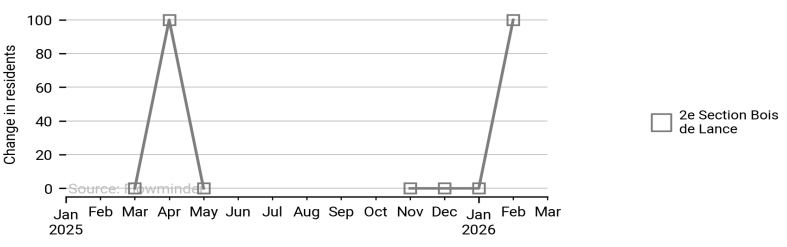


Communal sections in North with largest modelled change in population (01 Mar 25 - 28 Feb 26)

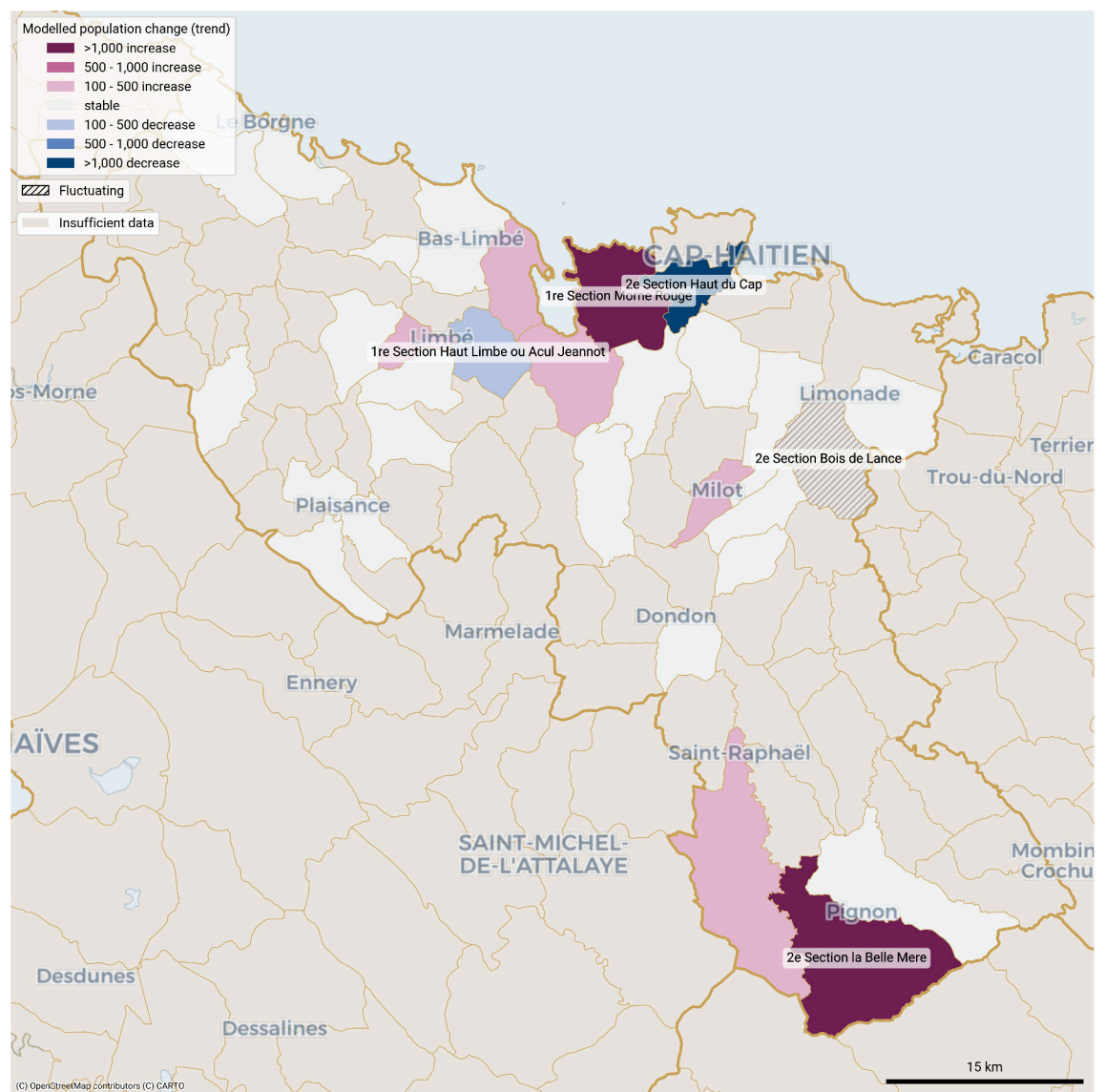
Solid line: estimates. Dotted line: model.



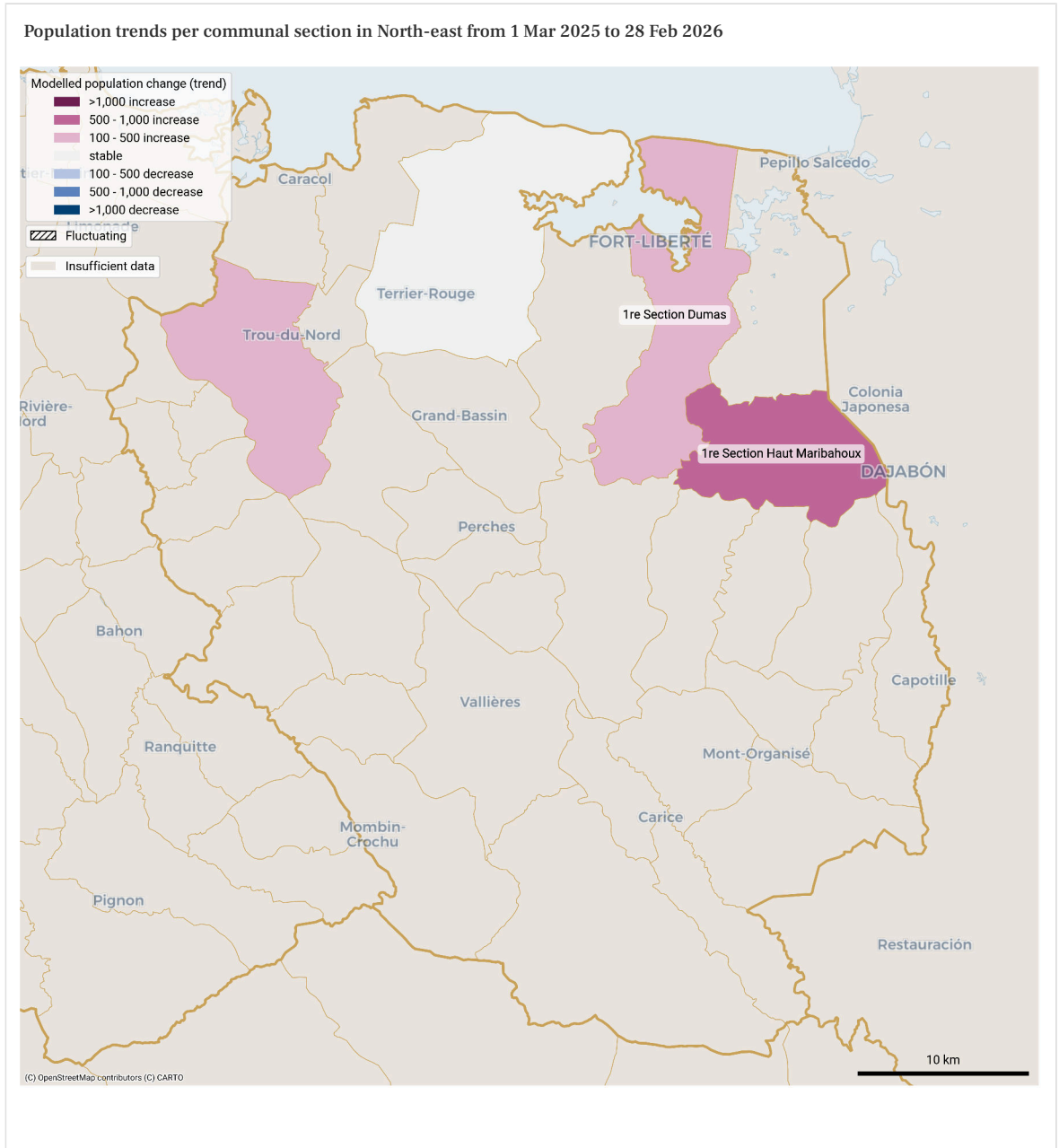
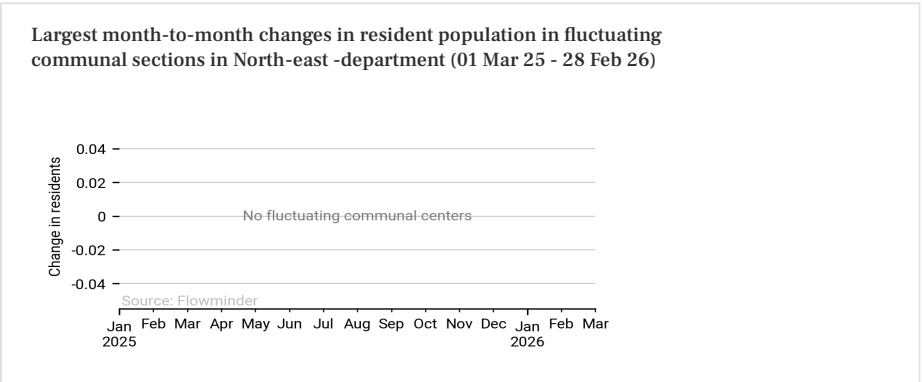
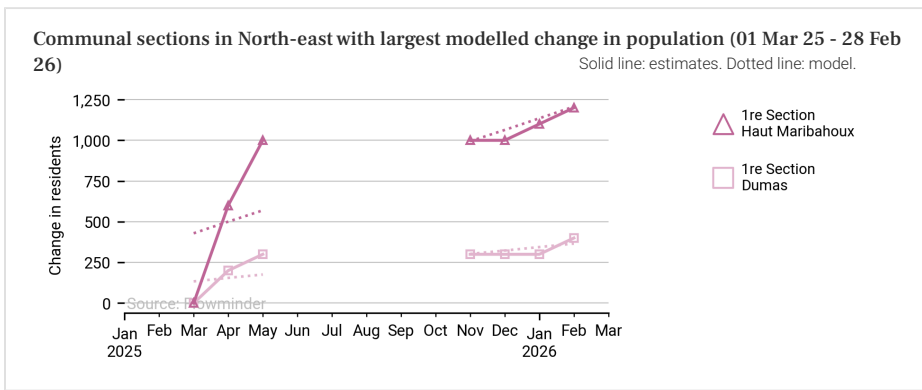
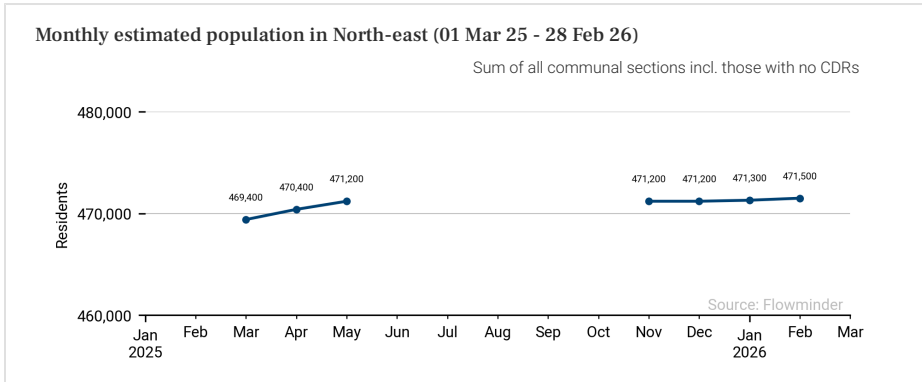
Largest month-to-month changes in resident population in fluctuating communal sections in North -department (01 Mar 25 - 28 Feb 26)



Population trends per communal section in North from 1 Mar 2025 to 28 Feb 2026

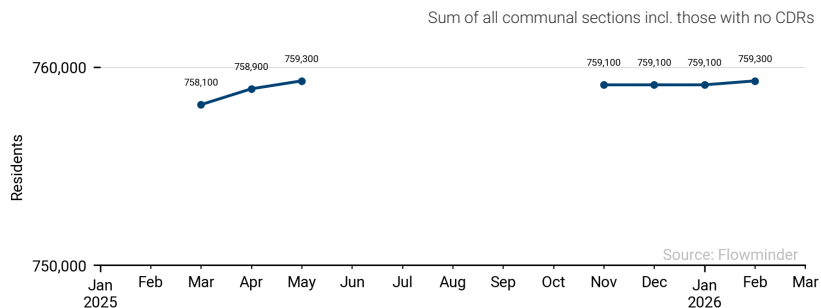


These population estimates come from Call Detail Records (CDRs) (mobile phone usage data) and other datasets for reference and adjustments. The estimates provided are not survey estimates, key informant estimates or field observations. If you are unfamiliar with this data source please read our documentation which can be found at www.flowgeek.org

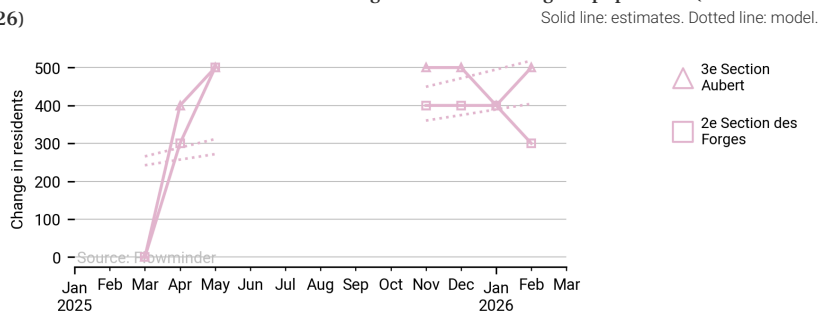


These population estimates come from Call Detail Records (CDRs) (mobile phone usage data) and other datasets for reference and adjustments. The estimates provided are not survey estimates, key informant estimates or field observations. If you are unfamiliar with this data source please read our documentation which can be found at www.flowminder.org

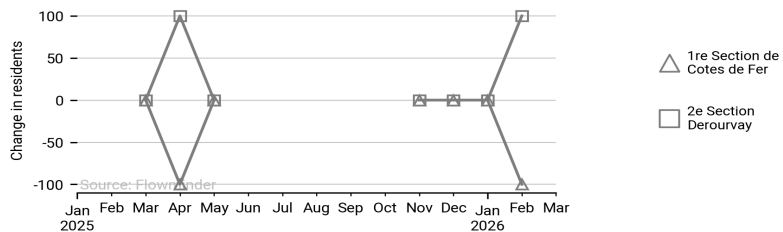
Monthly estimated population in North-west (01 Mar 25 - 28 Feb 26)



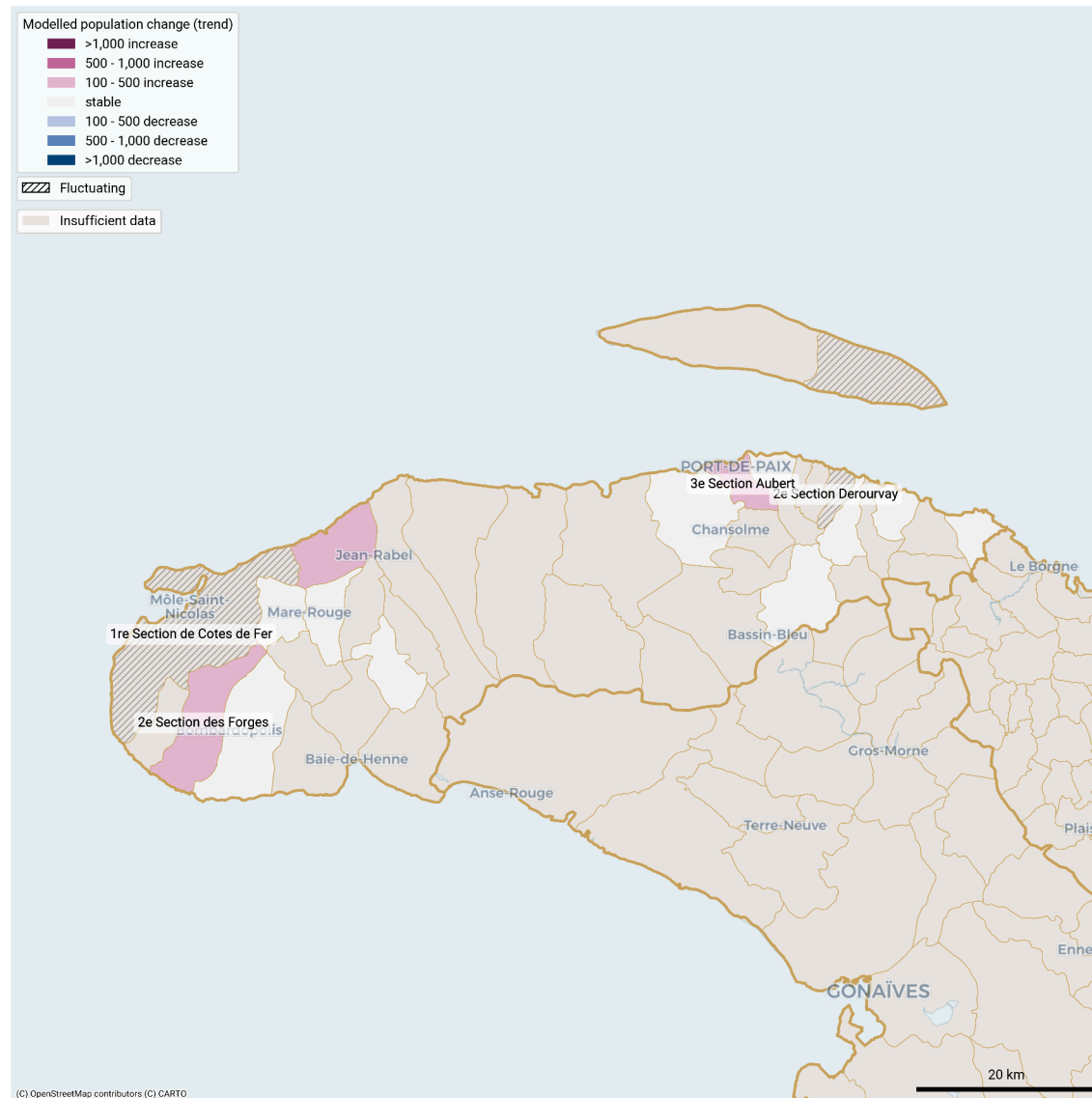
Communal sections in North-west with largest modelled change in population (01 Mar 25 - 28 Feb 26)



Largest month-to-month changes in resident population in fluctuating communal sections in North-west -department (01 Mar 25 - 28 Feb 26)



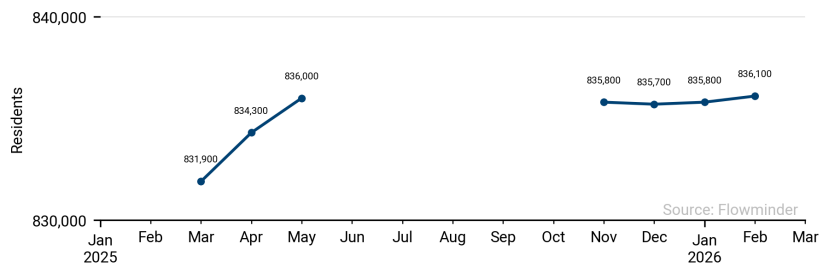
Population trends per communal section in North-west from 1 Mar 2025 to 28 Feb 2026



These population estimates come from Call Detail Records (CDRs) (mobile phone usage data) and other datasets for reference and adjustments. The estimates provided are not survey estimates, key informant estimates or field observations. If you are unfamiliar with this data source please read our documentation which can be found at www.flowminder.org

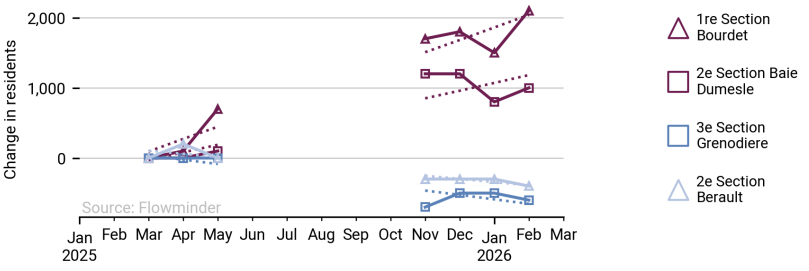
Monthly estimated population in South (01 Mar 25 - 28 Feb 26)

Sum of all communal sections incl. those with no CDRs

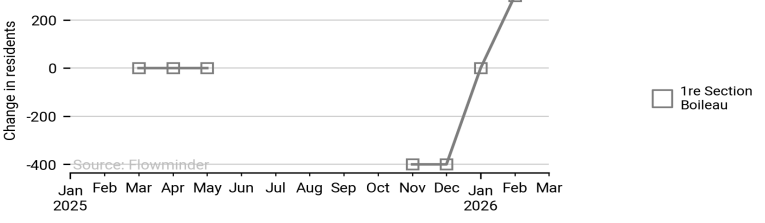


Communal sections in South with largest modelled change in population (01 Mar 25 - 28 Feb 26)

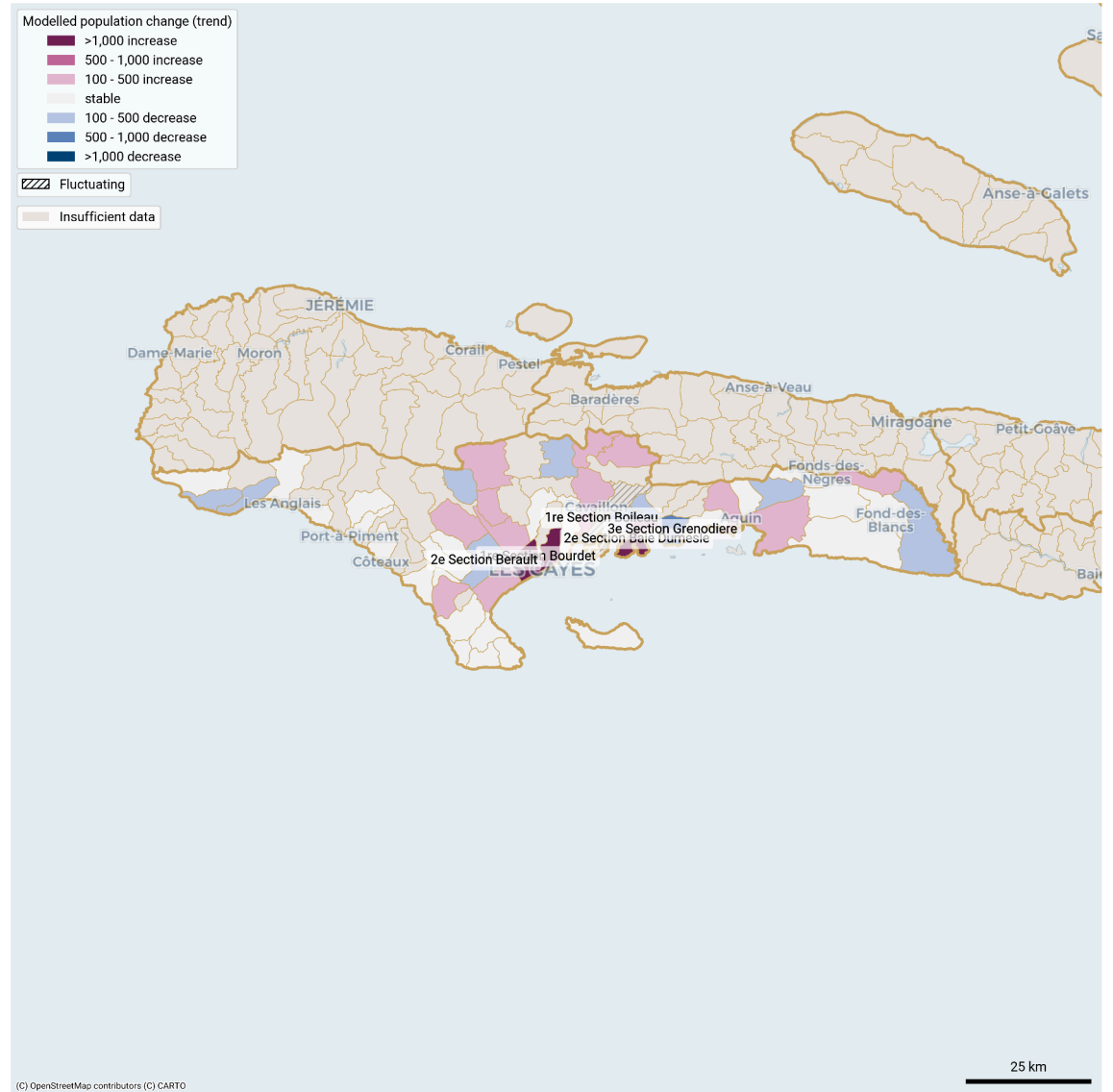
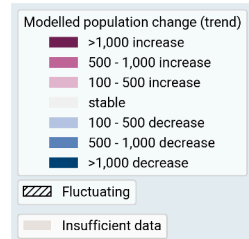
Solid line: estimates. Dotted line: model.



Largest month-to-month changes in resident population in fluctuating communal sections in South -department (01 Mar 25 - 28 Feb 26)



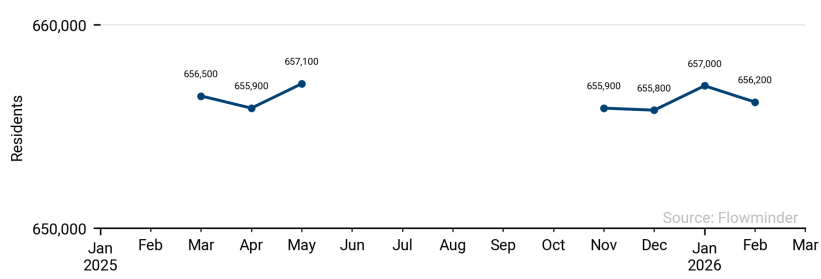
Population trends per communal section in South from 1 Mar 2025 to 28 Feb 2026



These population estimates come from Call Detail Records (CDRs) (mobile phone usage data) and other datasets for reference and adjustments. The estimates provided are not survey estimates, key informant estimates or field observations. If you are unfamiliar with this data source please read our documentation which can be found at www.flowminder.org

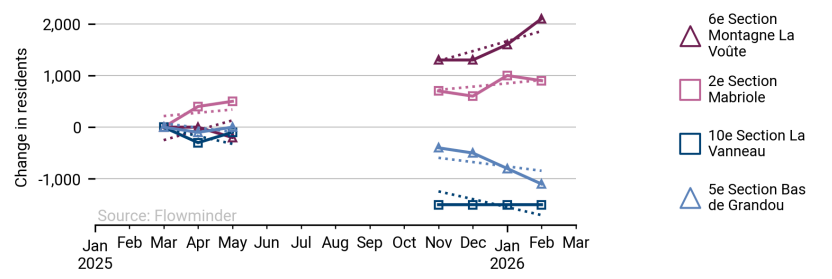
Monthly estimated population in South-east (01 Mar 25 - 28 Feb 26)

Sum of all communal sections incl. those with no CDRs

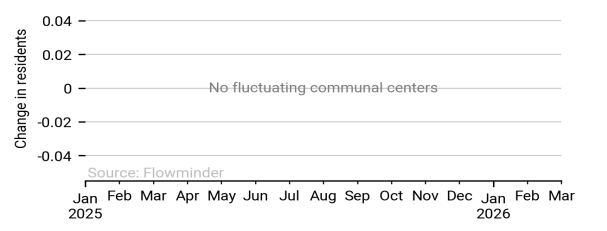


Communal sections in South-east with largest modelled change in population (01 Mar 25 - 28 Feb 26)

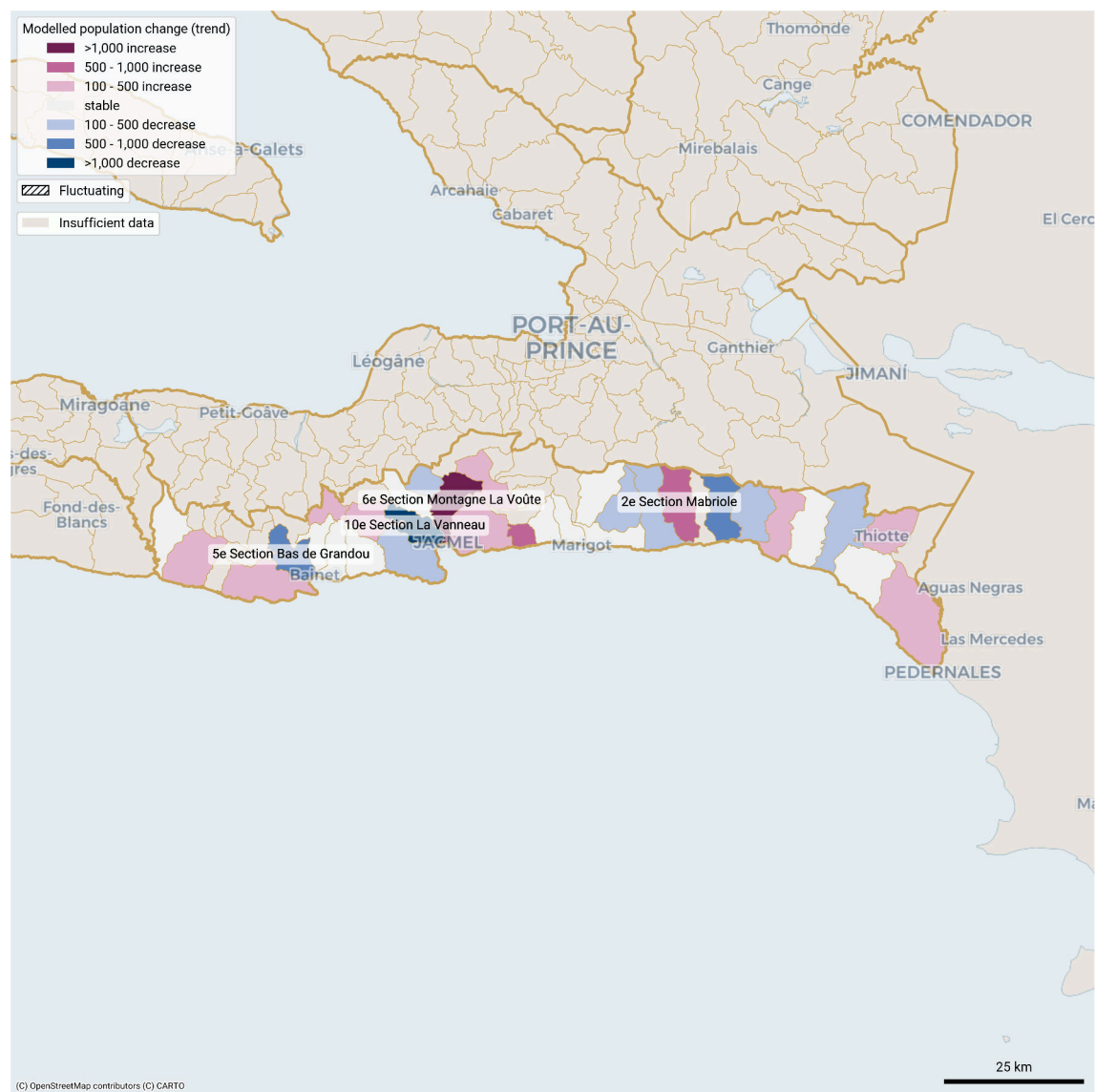
Solid line: estimates. Dotted line: model.



Largest month-to-month changes in resident population in fluctuating communal sections in South-east -department (01 Mar 25 - 28 Feb 26)



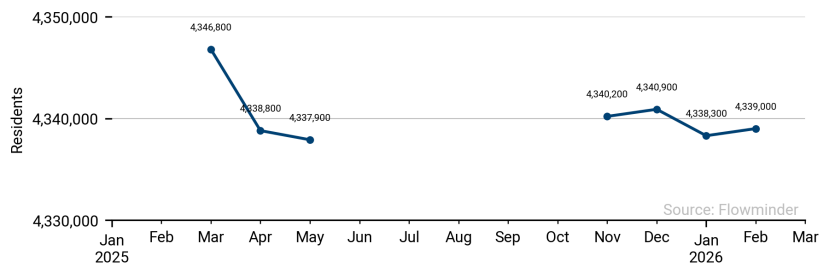
Population trends per communal section in South-east from 1 Mar 2025 to 28 Feb 2026



These population estimates come from Call Detail Records (CDRs) (mobile phone usage data) and other datasets for reference and adjustments. The estimates provided are not survey estimates, key informant estimates or field observations. If you are unfamiliar with this data source please read our documentation which can be found at www.flowminder.org

Monthly estimated population in West (01 Mar 25 - 28 Feb 26)

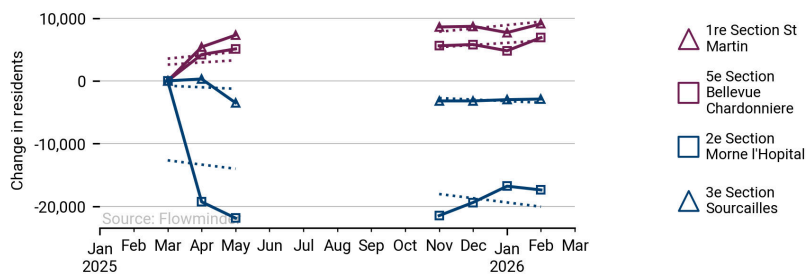
Sum of all communal sections incl. those with no CDRs



Source: Flowminder

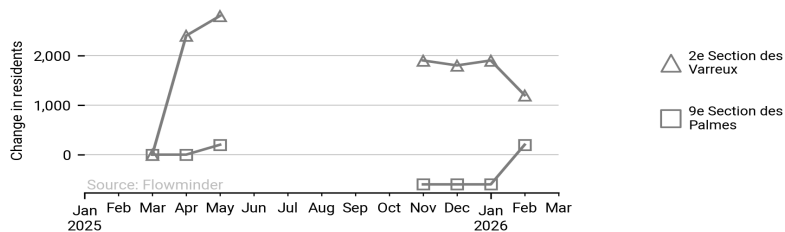
Communal sections in West with largest modelled change in population (01 Mar 25 - 28 Feb 26)

Solid line: estimates. Dotted line: model.



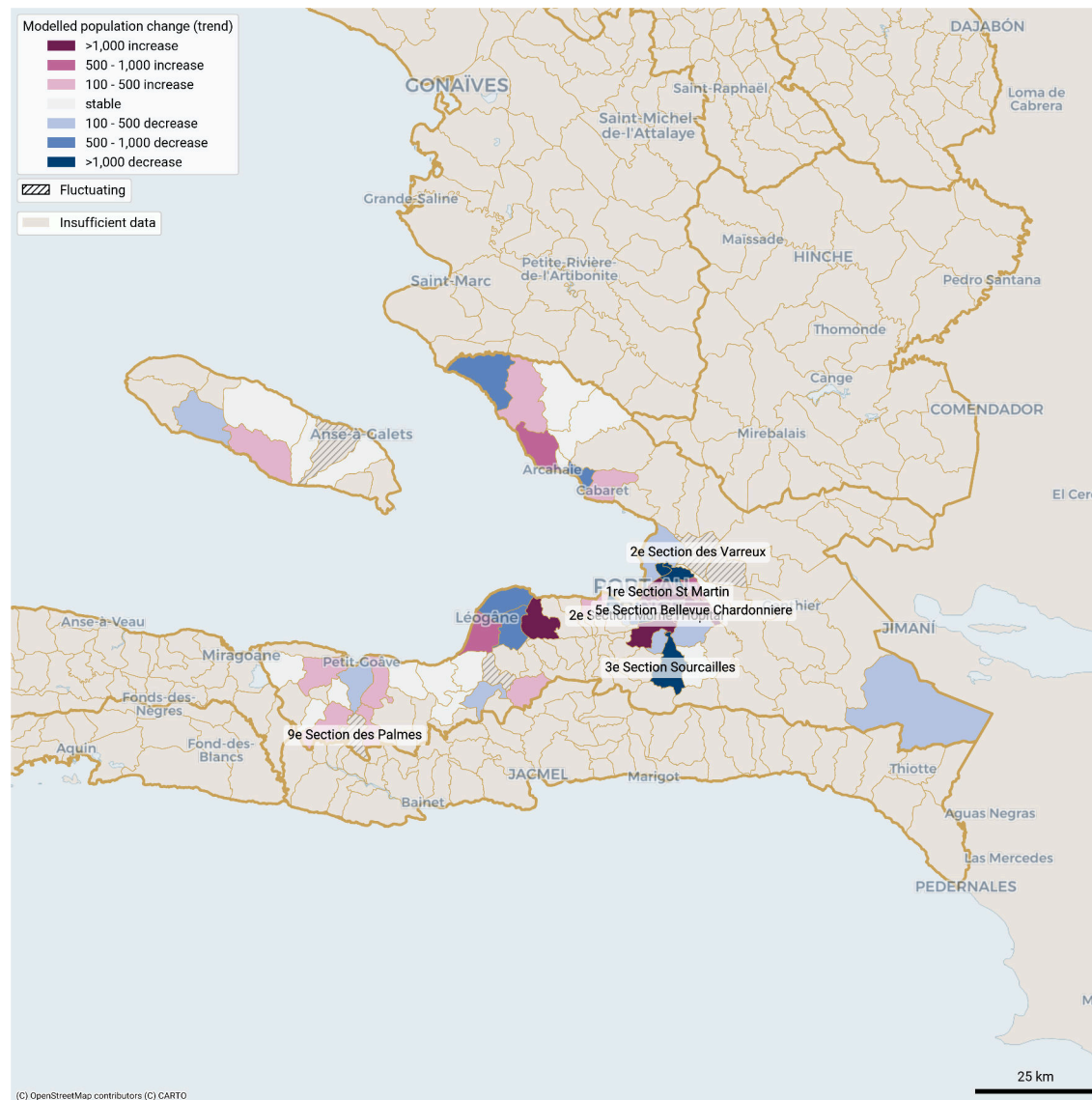
Source: Flowminder

Largest month-to-month changes in resident population in fluctuating communal sections in West - department (01 Mar 25 - 28 Feb 26)



Source: Flowminder

Population trends per communal section in West from 1 Mar 2025 to 28 Feb 2026



(C) OpenStreetMap contributors (C) GARTO

These population estimates come from Call Detail Records (CDRs) (mobile phone usage data) and other datasets for reference and adjustments. The estimates provided are not survey estimates, key informant estimates or field observations. If you are unfamiliar with this data source please read our documentation which can be found at www.flowminder.org

Preparedness | Mobility situation report - Haiti

Part 3 | Communal sections with changes in population estimates

List of communal sections with estimated changes in population where |total change|> 100 (01 Mar 25 - 28 Feb 26): increasing, decreasing or fluctuating

Department	Communal section	Population estimate Feb 2026	Trend type in the last 12 months	Estimated change over the last 12 months	Largest estimated month-to-month change
Artibonite	1re Section Pont Tamarin	250,300	Increasing	500	-
Artibonite	6e Section Charrette	117,500	Increasing	1,900	-
Artibonite	3e Section Oge	73,000	Decreasing	-100	-
Artibonite	2e Section Bois Neuf (Saint-Marc)	64,700	Increasing	-100	-
Artibonite	5e Section Bocozelle	63,400	Increasing	300	-
Artibonite	3e Section Labady	61,200	Decreasing	-2,600	-
Artibonite	1re Section Platana	33,800	Increasing	400	-
Artibonite	4e Section Desarmes (Quartier de Desarmes)	30,300	Increasing	800	-
Artibonite	1re Section Villars	28,900	Increasing	300	-
Artibonite	5e Section Bastien	28,400	Increasing	1,000	-
Artibonite	8e Section l'Attalaye	28,200	Increasing	200	-
Artibonite	2e Section Belanger	25,900	Increasing	700	-
Artibonite	1re Section Poteneau	24,500	Decreasing	-100	-
Artibonite	1re Section Deluge	20,300	Decreasing	-1,000	-
Artibonite	4e Section Poteaux	14,900	Increasing	300	-
Artibonite	4e Section Lalouere	14,600	Decreasing	-700	-
Artibonite	3e Section Guillaume Moge (Quartier de Desarmes)	13,400	Increasing	300	-
Artibonite	2e Section Camathe	10,000	Decreasing	-200	-
Centre	1re Section Juanaria	77,800	Fluctuating	-	5,600
Centre	4e Section Crete Brûlée	50,500	Decreasing	-4,600	-
Centre	1re Section Cabral	29,200	Fluctuating	-	1,400
Centre	2e Section Lociane	28,000	Increasing	500	-
Centre	3e Section Aguahedionde (Rive Droite)	22,100	Decreasing	-100	-

Department	Communal section	Population estimate Feb 2026	Trend type in the last 12 months	Estimated change over the last 12 months	Largest estimated month-to-month change
Centre	4e Section Aguahedionde (Rive Gauche)	20,700	Fluctuating	-	200
Centre	2e Section Roye-Sec	19,600	Fluctuating	-	1,800
Centre	La Hoye	17,000	Fluctuating	-	100
Grande-Anse	9e Section Fond Rouge Torbeck	33,700	Increasing	800	-
Grande-Anse	8e Section Fond Rouge Dahere	30,900	Increasing	400	-
Grande-Anse	3e Section Haute Guinaudee	21,300	Increasing	500	-
Grande-Anse	1re Section Beaumont	20,800	Fluctuating	-	200
Grande-Anse	1re Section Grandoit	20,500	Decreasing	-700	-
Grande-Anse	1re Section Basse Voldroque	18,900	Decreasing	-300	-
Grande-Anse	3e Section Desormeau	16,900	Increasing	1,000	-
Grande-Anse	1re Section Anote ou 1re Tapion	15,100	Increasing	200	-
Grande-Anse	6e Section Îles Blanches	14,000	Decreasing	-300	-
Grande-Anse	2e Section Haute Voldroque	11,800	Increasing	400	-
Grande-Anse	2e Section Espere	11,000	Decreasing	-500	-
Grande-Anse	5e Section Baliverne	10,800	Fluctuating	-	100
Grande-Anse	3e Section Grand Vincent	8,300	Decreasing	-400	-
Grande-Anse	1re Section Bernagousse	6,600	Increasing	500	-
Grande-Anse	1re Section Bariadelle	5,000	Fluctuating	-	400
Nippes	1re Section Chalon	44,300	Increasing	800	-
Nippes	3e Section Tournade (Quartier de Changeux)	19,300	Decreasing	-200	-
Nippes	2e Section Grande-Riviere-Joly	18,300	Decreasing	100	-
Nippes	2e Section Tiby	14,100	Fluctuating	-	200
Nippes	2e Section Fond-des-Negres ou Morne Brice	12,400	Increasing	200	-

These population estimates come from Call Detail Records (CDRs) (mobile phone usage data) and other datasets for reference and adjustments. The estimates provided are not survey estimates, key informant estimates or field observations. If you are unfamiliar with this data source please read our documentation which can be found at www.flowgeek.org

Preparedness | Mobility situation report - Haiti

Part 3 | Communal sections with changes in population estimates

List of communal sections with estimated changes in population where |total change|> 100 (01 Mar 25 - 28 Feb 26): increasing, decreasing or fluctuating

Department	Communal section	Population estimate Feb 2026	Trend type in the last 12 months	Estimated change over the last 12 months	Largest estimated month-to-month change
Nippes	2e Section Anse aux Pins	10,200	Decreasing	-100	-
Nippes	1re Section l'Asile ou Nan Paul	9,200	Fluctuating	-	200
Nippes	3e Section Fond Tortue	9,000	Increasing	100	-
Nippes	4e Section la Plaine	8,900	Decreasing	-300	-
Nippes	3e Section Vassal Labiche	8,700	Decreasing	-300	-
Nippes	2e Section Belle Riviere	8,000	Decreasing	-400	-
Nippes	1re Section Baconnois-Barreau	7,900	Increasing	-400	-
Nippes	1re Section Raymond	7,600	Decreasing	-400	-
Nippes	3e Section Arnaud (Morcou)	7,400	Fluctuating	-	1,600
North	2e Section Haut du Cap	178,400	Decreasing	-1,800	-
North	5e Section Ravine Desroches	72,100	Increasing	400	-
North	4e Section San-Yago	41,500	Increasing	400	-
North	2e Section Bas de l'Acul (Basse Plaine)	23,300	Increasing	100	-
North	1re Section Morne Rouge	19,000	Increasing	900	-
North	2e Section la Belle Mere	17,200	Increasing	2,100	-
North	2e Section Bonnet a l'Eveque	14,800	Increasing	200	-
North	2e Section Bois de Lance (Limonade)	11,400	Fluctuating	-	100
North	1re Section Camp-Louise	9,200	Increasing	200	-
North	1re Section Haut Limbe ou Acul Jeannot	4,000	Decreasing	-100	-
North-East	1re Section Haut Maribahoux	109,400	Increasing	1,200	-
North-East	3e Section Roche Plate	40,000	Increasing	300	-
North-East	1re Section Dumas	30,700	Increasing	400	-
North-West	3e Section Aubert	107,500	Increasing	500	-

Department	Communal section	Population estimate Feb 2026	Trend type in the last 12 months	Estimated change over the last 12 months	Largest estimated month-to-month change
North-West	2e Section Derourvay	45,700	Fluctuating	-	100
North-West	7e Section Diondion	15,800	Increasing	200	-
North-West	1re Section de Cotes de Fer	15,800	Fluctuating	-	100
North-West	2e Section des Forges	13,900	Increasing	300	-
South	1re Section Bourdet	97,400	Increasing	2,100	-
South	1re Section Boury	32,100	Increasing	400	-
South	3e Section Solon	26,800	Increasing	100	-
South	2e Section Champlois	19,900	Increasing	200	-
South	1re Section Boileau	17,100	Fluctuating	-	400
South	2e Section Martineau	16,200	Increasing	0	-
South	3e Section Brodequin	16,000	Increasing	-200	-
South	1re Section Levy Mersan	15,800	Increasing	200	-
South	2e Section Fonfrede	14,900	Increasing	300	-
South	2e Section Anse a Drick	14,400	Increasing	100	-
South	2e Section Baie Dumesle	14,300	Increasing	1,000	-
South	2e Section Berault	14,100	Decreasing	-400	-
South	2e Section Bellevue	13,600	Decreasing	-400	-
South	3e Section Grenodiere	12,900	Decreasing	-600	-
South	1re Section Macean	12,400	Increasing	300	-
South	1re Section Blactote	11,700	Decreasing	-100	-
South	5e Section Laroque	11,600	Increasing	400	-
South	3e Section Tibi Davezac	11,000	Decreasing	-300	-
South	6e Section Solon	10,700	Decreasing	-600	-

These population estimates come from Call Detail Records (CDRs) (mobile phone usage data) and other datasets for reference and adjustments. The estimates provided are not survey estimates, key informant estimates or field observations. If you are unfamiliar with this data source please read our documentation which can be found at www.flowgeek.org

Preparedness | Mobility situation report - Haiti

Part 3 | Communal sections with changes in population estimates

List of communal sections with estimated changes in population where |total change|> 100 (01 Mar 25 - 28 Feb 26): increasing, decreasing or fluctuating

Department	Communal section	Population estimate Feb 2026	Trend type in the last 12 months	Estimated change over the last 12 months	Largest estimated month-to-month change
South	7e Section Frangipane	10,400	Decreasing	-300	-
South	10e Section Guirand	10,300	Increasing	300	-
South	4e Section Mare Henri	7,200	Increasing	200	-
South	2e Section Dory	6,500	Decreasing	100	-
South	5e Section Sucrierie Henri	5,300	Decreasing	-100	-
South	4e Section Dalmette	3,500	Decreasing	-100	-
South-East	1re Section Bas Cap Rouge	85,300	Increasing	600	-
South-East	6e Section Montagne La Voûte	47,100	Increasing	2,100	-
South-East	1re Section Thiotte	28,200	Increasing	-100	-
South-East	1re Section Boucan Guillaume	24,100	Increasing	200	-
South-East	11e Section La Montagne	19,200	Decreasing	-600	-
South-East	9e Section Bas des Gris Gris	17,800	Increasing	500	-
South-East	1re Section Colline des Chenes ou Bodarie	16,800	Decreasing	0	-
South-East	1re Section Gris Gris	16,400	Increasing	100	-
South-East	5e Section Bel Air	16,000	Decreasing	-700	-
South-East	4e Section Fond Jean Noël	15,600	Decreasing	-800	-
South-East	1re Section La Vallée de Jacmel ou Muzac	15,100	Increasing	400	-
South-East	5e Section Bas de Grandou	13,400	Decreasing	-1,100	-
South-East	2e Section La Vallée de Baint ou Ternier	13,300	Increasing	300	-
South-East	2e Section Mabriole	12,700	Increasing	900	-
South-East	1re Section Ravine Normande	12,500	Increasing	300	-
South-East	3e Section Cochon Gras	11,600	Increasing	100	-
South-East	8e Section Bas Coq Chante	10,400	Decreasing	-300	-

Department	Communal section	Population estimate Feb 2026	Trend type in the last 12 months	Estimated change over the last 12 months	Largest estimated month-to-month change
South-East	4e Section Corail Lamothe	10,400	Decreasing	-600	-
South-East	1re Section Bais d'Orange	10,000	Decreasing	-300	-
South-East	10e Section La Vanneau	9,800	Decreasing	-1,500	-
South-East	6e Section Pichon	8,800	Increasing	400	-
West	1re Section St Martin	495,400	Increasing	9,100	-
West	1re Section Turgeau	481,100	Increasing	-2,200	-
West	3e Section Martissant	281,200	Decreasing	200	-
West	5e Section Bellevue Chardonniere	278,800	Increasing	6,900	-
West	10e Section Thor	269,800	Decreasing	-1,900	-
West	11e Section Riviere Froide	217,000	Increasing	600	-
West	2e Section Morne l'Hopital	171,600	Decreasing	-17,400	-
West	3e Section Etang du Jonc	132,600	Increasing	3,200	-
West	11e Section Ravine Seche	131,200	Decreasing	-500	-
West	2e Section des Varreux (Croix-Des-Bouquets)	130,500	Fluctuating	-	2,400
West	1re Section Dessources	125,300	Increasing	100	-
West	3e Section Bellevue	119,300	Decreasing	-2,600	-
West	3e Section des Vases	108,800	Increasing	600	-
West	1re Section des Varreux (Croix-Des-Bouquets)	79,400	Decreasing	-400	-
West	1re Section Boucassin (Cabaret)	67,600	Increasing	0	-
West	9e Section Bizoton	55,800	Decreasing	-600	-
West	2e Section Petite Riviere	55,100	Decreasing	-300	-
West	1re Section Fonds-Verrettes	52,300	Decreasing	-200	-
West	2e Section des Varreux (Cite Soleil)	46,100	Decreasing	500	-

These population estimates come from Call Detail Records (CDRs) (mobile phone usage data) and other datasets for reference and adjustments. The estimates provided are not survey estimates, key informant estimates or field observations. If you are unfamiliar with this data source please read our documentation which can be found at www.flowgeek.org

List of communal sections with estimated changes in population where |total change|> 100 (01 Mar 25 - 28 Feb 26): increasing, decreasing or fluctuating

Department	Communal section	Population estimate Feb 2026	Trend type in the last 12 months	Estimated change over the last 12 months	Largest estimated month-to-month change
West	3e Section Grande Rivere	40,000	Decreasing	-1,000	-
West	4e Section Bellevue	36,400	Increasing	1,200	-
West	2e Section Petite Source	36,100	Fluctuating	-	200
West	1re Section des Varreux (Cite Soleil)	35,900	Decreasing	-1,600	-
West	1re Section Bino	35,300	Increasing	300	-
West	3e Section Sourcailles	29,900	Decreasing	-2,900	-
West	1re Section Montagne Noire	25,700	Decreasing	-1,200	-
West	12e Section des Fourques	23,100	Increasing	1,000	-
West	2e Section Boucassin	22,600	Decreasing	-400	-
West	3e Section Petit Boucan	21,300	Increasing	2,700	-
West	4e Section Fond de Boudin	15,300	Decreasing	-200	-
West	5e Section Petit Bois	14,500	Fluctuating	-	100
West	4e Section Bellevue la Montagne	13,700	Decreasing	-500	-
West	10e Section Fond d'Oie	11,300	Increasing	200	-
West	8e Section des Platons	8,800	Increasing	200	-
West	4e Section Montrouis	8,200	Decreasing	-400	-
West	9e Section des Palmes	6,400	Fluctuating	-	800
West	3e Section Trou Louis	5,900	Increasing	100	-
West	2e Section Grand Vide	4,300	Decreasing	-100	-
West	2e Section Fonds Baptiste	4,100	Increasing	400	-
West	10e Section des Palmes	2,100	Increasing	-300	-
West	12e Section Cormiers	1,700	Fluctuating	-	100

Department	Communal section	Population estimate Feb 2026	Trend type in the last 12 months	Estimated change over the last 12 months	Largest estimated month-to-month change
------------	------------------	------------------------------	----------------------------------	--	---

Authors And Funders

This report was authored by the Flowminder Foundation.

This work was made possible by funding from the UK Foreign, Commonwealth and Development Office (FCDO).

Acknowledgements

This study was made possible thanks to the anonymised (aggregated) Call Detail Records provided by a mobile network operator in Haiti.

How to use this report

We provide population estimates that take into account population movements within Haiti, per month and per communal section. We report the average decreasing/increasing trends for each communal section for which we have data. However, it is important to note that multiple trends can be observed over the reported 12-month period. The current crisis has led to large population movements, particularly of internally displaced people (e.g. [IDP movement](#)), which can result in population statistics becoming outdated over a few months, and therefore impairing preparedness efforts (e.g. hazard population exposure estimation, needs assessment, service and contingency planning).

Indicators presented

Modelled change (trend): the predicted population change for the reporting period from all 12 monthly estimates, which smoothes out monthly variations (linear regression).

Estimated change: the difference in the estimated population between the first and last months of the 12 month reporting period, which does not reflect any monthly variation within.

For communal sections with fewer than 10 months of resident estimates during the reporting period, we do not make a trend classification (insufficient data). For monthly population estimates at the department level, we carry forward the latest estimate to fill missing months in a communal section so that the aggregated changes at the department level are only based on observed CDR-derived mobility.

For communal sections with fast changing populations, we categorised them as 'increasing', 'decreasing', 'stable', when there is little to no change; or as 'fluctuating' when large month-to-month changes prevented us from detecting a trend.

Report's data

This report uses our v4.0 dataset ([documentation](#), [release notes](#)), available at <https://haiti.mobility-dashboard.org>.

This report and its contents may only be shared with attribution to the Flowminder Foundation and Digicel Haiti. Adaptation is permitted as long as the changes are indicated and the Flowminder Foundation and Digicel Haiti are cited. Use of the report and its contents is limited to humanitarian and development purposes.

Disclaimer of Warranties and Limitation of Liability: To the extent possible, Flowminder and Digicel offer this report and its contents as-is and as-available, and make no representations or warranties of any kind concerning this report and its contents, whether express, implied, statutory, or other. This includes, without limitation, warranties of title, merchantability, fitness for a particular purpose, non-infringement, absence of latent or other defects, accuracy, or the presence or absence of errors, whether or not known or discoverable.

To the extent possible, in no event will Flowminder or Digicel be liable on any legal theory (including, without limitation, negligence) or otherwise for any direct, special, indirect, incidental, consequential, punitive, exemplary, or other losses, costs, expenses, or damages arising out of the use of the report or its contents, even if Flowminder or Digicel have been advised of the possibility of such losses, costs, expenses, or damages. The disclaimer of warranties and limitation of liability provided above shall be interpreted in a manner that, to the extent possible, most closely approximates an absolute disclaimer and waiver of all liability.

Data privacy & governance

No personal data, such as an individual's identity, demographics, location, contacts or movements, is made available to the government or any other third party at any time. All results produced by Flowminder are aggregated results (for example, subscriber density in a given municipality), which means that they do not contain any information about individual subscribers.

This data is fully anonymised. This approach complies with the European Union's General Data Protection Regulation (EU GDPR2016/679). Data is processed on a server installed behind the mobile network operator's firewall in Haiti, and no personal data leaves the operator's premises.

Data considerations

The estimates shown are our best current assessment of movements. However, there are a number of uncertainties. The information should be interpreted together with other available evidence.

For more information about our methods, please read our Haiti Mobility Data Indicators documentation on residents and relocation at [here](#).

Data Sources

Pseudonymised Call Detail Records: Digicel Haiti

CDR-based data products: Flowminder

Phone survey data: [HT PS 2023](#)

Field survey data: [MSNA 2022](#) and [MSNA 2024](#)

Population estimates: [UN data](#); IHSI 2015; and IHSI 2020.

The following citation is required when using the data and information included in this report:

Flowminder Foundation, Mar 2026: Preparedness report, Mobility situation in Haiti from 01 Mar 2025 to 28 Feb 2026

For more information on the terms and conditions of Flowminder's reports and information products, please visit flowminder.org