



FLOWMINDER.ORG

March 2025: large-scale population movements in Haiti

Mobility statistics based on mobile phone usage data and their use in
preparing for the hurricane season

09 April 2025

Flowminder Foundation

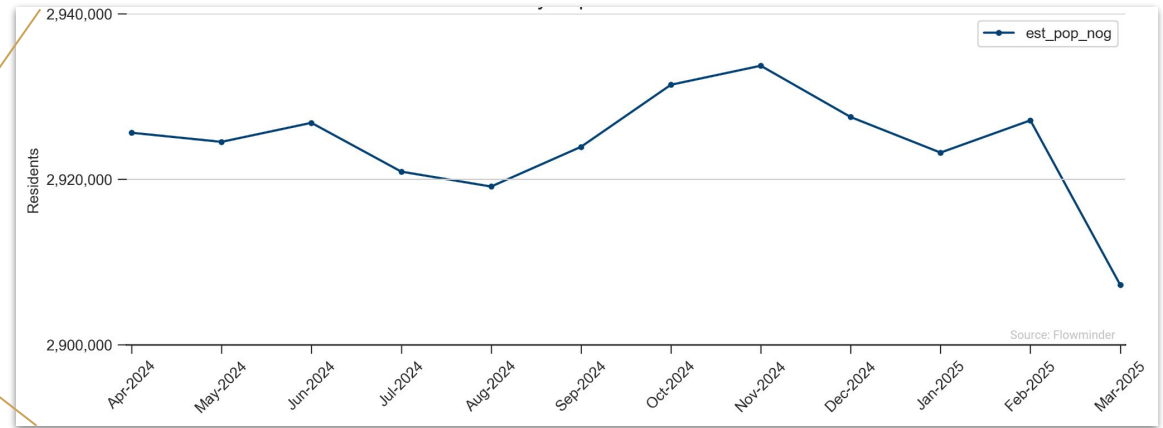
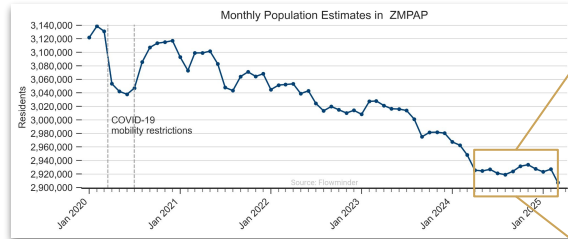
Main observations from our last report: March 2025

And population mobility since 2020

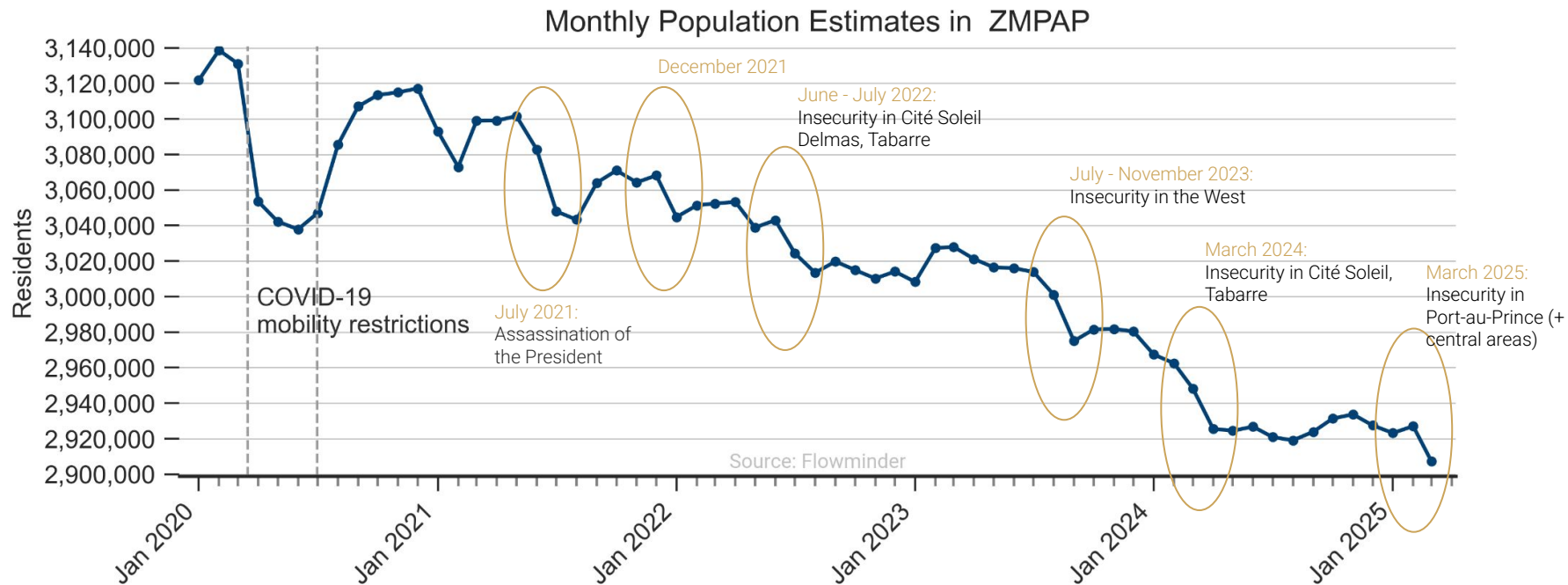
- March 2025: **largest net outflow from the ZMPAP** since April 2024 (**-20,000 people**)
 - Leading to **population increases**, particularly in the urban areas of the **North, Centre, Artibonite and Pétion-Ville** in the West
 - And in most of the other municipal sections of the country (for which we have estimates)
- Inflows to the ZMPAP reached their lowest level on record (since February 2020) (**+10,000 people**)
- Outflows from the ZMPAP reached their highest level since April 2024 (**-30,000 people**)
- Changes in mobility and population are even more significant within the ZMPAP :
 - - **22,000 people** in the 1st Turgeau section (Port-au-Prince)
 - - **8,500 people** in the 1st section St Martin (Delmas)
 - figures not seen since 2024

The population of the ZMPAP has remained relatively stable (2.930 million) since April 2024, then experienced its largest month-on-month change in March 2025:

- 20,000 people

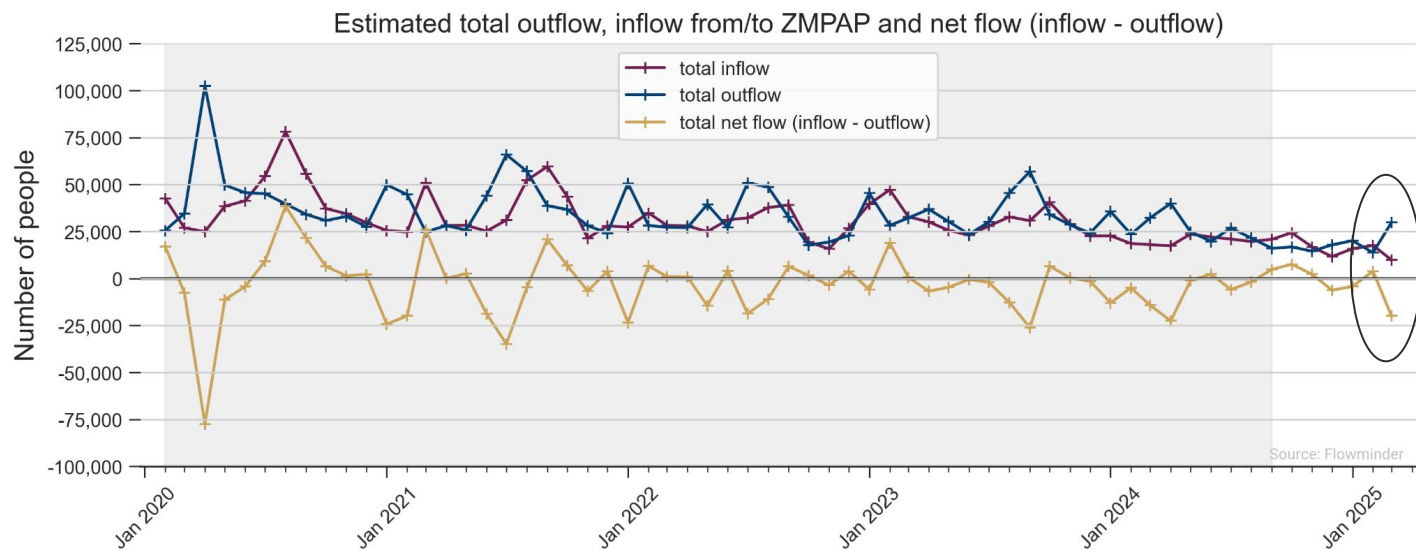


The estimated fall in March for the ZMPAP is the biggest in the last 12 months, but not the first of such magnitude:



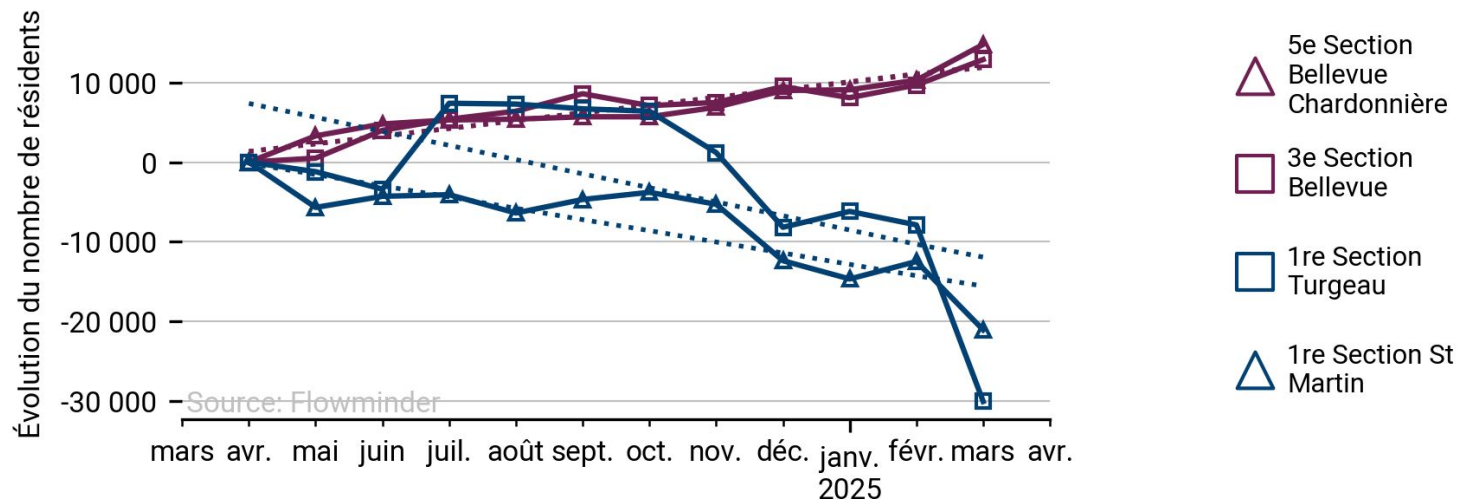
Estimated change in population in the ZMPAP due to mobility, from February 2020 to March 2025

- **Inflows to the ZMPAP** in March 2025 were at a **historically low** level and
- **Outflows from the ZMPAP** reached their **highest level** since April 2024.



March 2025: The changes in mobility and population within the ZMPAP are even greater:

- - **22,000 people** in the 1st Turgeau section (Port-au-Prince),
 - ~6,000 net flows outside the ZMPAP (the rest with adjacent sections of the ZMPAP, 5th section Bellevue Chardonnière, 3rd section Etang du Jonc, also St-Martin)
- - **8,500 people** in 1st section St Martin (Delmas)
 - Nearly 7,500 due to mobility outside the ZMPAP



Demographic trends and net flows for the largest sections of the ZMPAP (February to March 2025) (full details in our report on the protracted crisis)

Municipality	Communal section	Population trends (= total net cash flow)	Net flows to ZMPAP sections from other ZMPAP sections	Net flows to ZMPAP sections from external sections
Port-au-Prince	1st Section Turgeau	-22,180	-16,220	-5,960
Delmas	1st Section St Martin	-8,610	-930	-7,680
Port-au-Prince	2nd Section Morne l'Hôpital	-3,190	-1,830	-1,360
Port-au-Prince	3rd Section Martissant	-2,440	-2,270	-170
Cité Soleil	2nd Section des Varreux	-2,040	-1,240	-800
Tabarre	4th Section Bellevue	500	760	-260
Pétion-Ville	4th Section Bellevue la Montagne	530	570	-40
Croix-Des-Bouquets	1st Section des Varreux	570	700	-130
Croix-Des-Bouquets	2nd Section des Varreux	830	720	110
Carrefour	10th Section Thor	1,310	1,840	-530
Carrefour	9th Section Bizoton	3,060	3,080	-20
Tabarre	3rd Section Bellevue	3,180	3,900	-720
Pétion-Ville	3rd Section Etang du Jonc	4,120	4,720	-600
Pétion-Ville	5th Section Bellevue Chardonnière	4,530	5,830	-1,300

Aperçu de la méthode

The abnormality score indicates how different the last monthly change of relocations (from communal section a to a communal section b) is, compared to the median monthly change of relocations estimated during the 12 preceding months (baseline period), measured in median absolute deviations (i.e. it is the modified z-score of the relocation monthly change). It describes how unusual the last monthly change in the number of relocations from a communal section a to a communal section b is, compared to the monthly changes estimated during the 12 preceding months.

A positive value for this indicator greater than 3 indicates an abnormal increase in the number of relocations (a statistical outlier); a value less than -3 indicates an abnormal decrease in relocations. Abnormality scores above 6 in absolute value are more likely to correspond to technical issues, particularly in the absence of known disrupting events (disruption of mobility and/or phone usage).

The abnormality score is not available for January to March 2020 included due to a too short baseline period to be reliable.

[En savoir plus](#)

Indicateurs

Veuillez choisir une catégorie d'indicateur :

Résidents

Changement de résidence

[Expérimental] Présence
journalière[Expérimental] Mouvements
journaliers

Abnormality score

Paramètres des données

Paramètres de la carte

Cliquez sur la barre d'info à gauche pour obtenir des informations sur les indicateurs et leurs méthodes

Indicateurs: Abnormality score

Describes how unusual the last monthly change in the number of relocations from a communal section to another is, compared to the monthly changes estimated during the 12 preceding months.

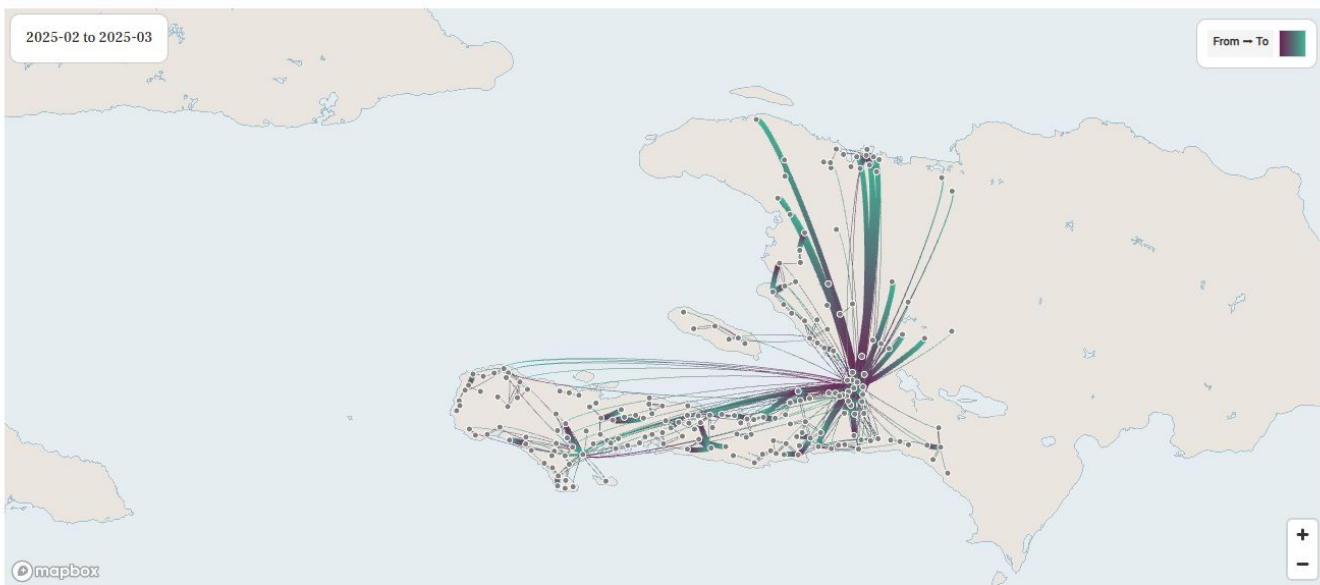
Télécharger



Map

2025-02 to 2025-03

From → To



mapbox

2024-03 to 2024-04

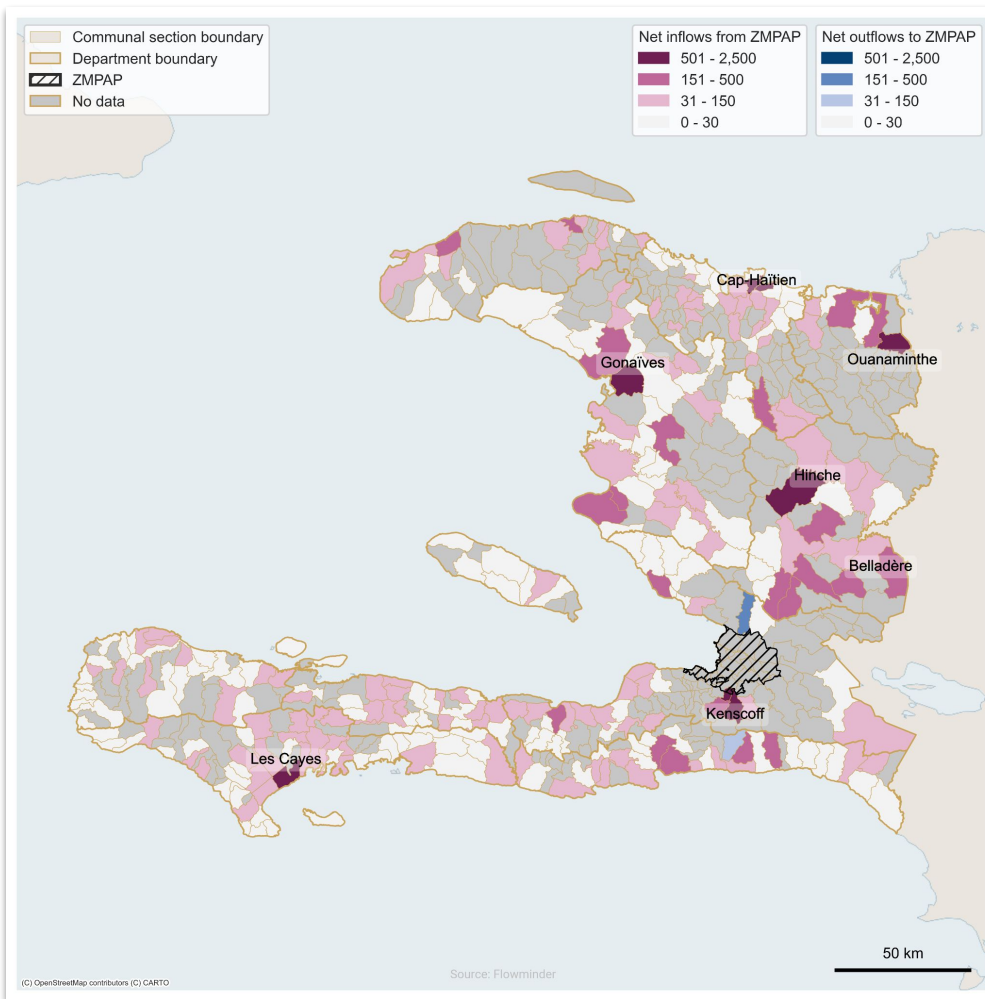
2025-02 to 2025-03

Connecté au serveur dorsal (backend)

Version: 7a8e97c (main)

Estimated change in population due to mobility with the ZMPAP by communal section, from February 2025 to March 2025

- ZMPAP net inflows for almost all sections of the country (**which is unusual**)
- Particularly high net inflows from the ZMPAP to Gonaïves, Cap-Haïtien, Ouanaminthe, Les Cayes and Hinche



Communal sections with the highest population growth (net inflow) due to mobility with the ZMPAP (February 2025 - March 2025)

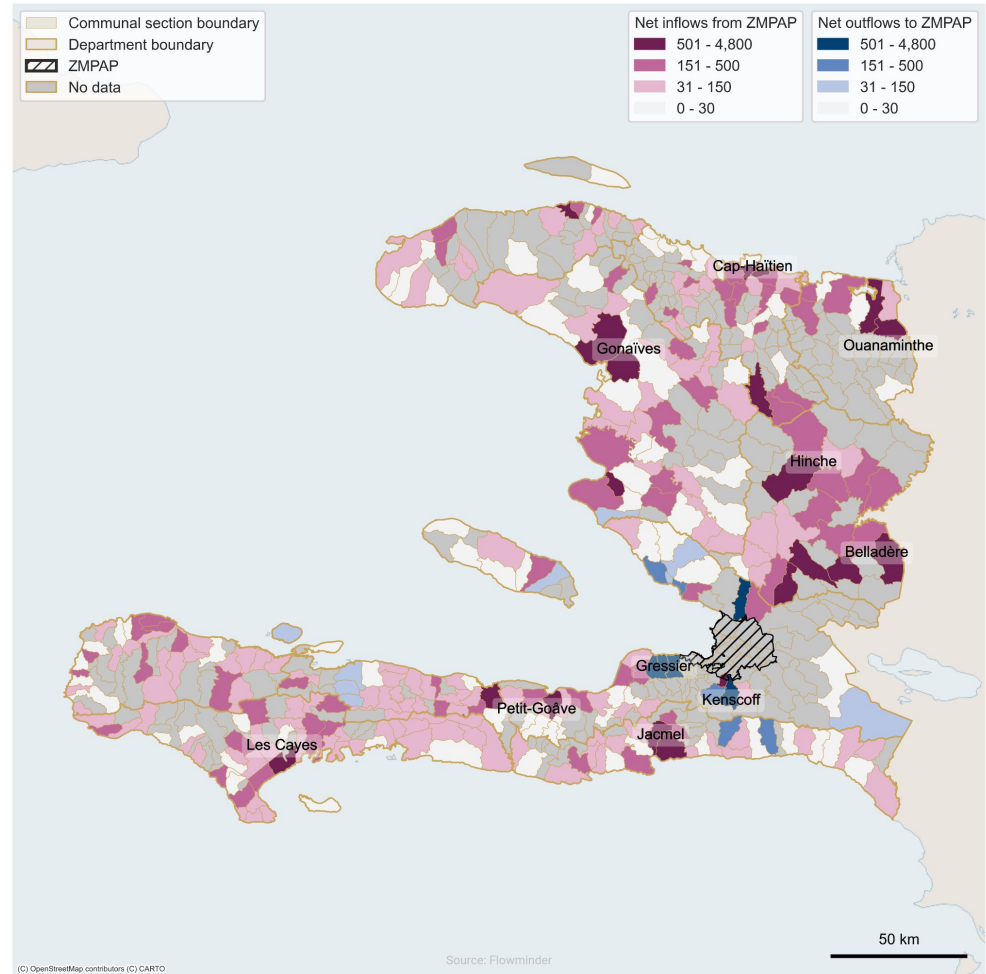
Department	Municipality	Communal section	Net inflows
West	Pétion-Ville	1st Section Montagne Noire	1,650
Centre	Hinche	1st Section Juanaria	850
Artibonite	Gonaïves	1st Section Tamarin Bridge	730
North	Cap-Haïtien	2nd Section Haut du Cap	700
North	Cap-Haïtien	3rd Section Petit Anse	690

In March 2025, estimated mobility with the ZMPAP contributed more to population growth on communal sections in the rest of the country than in the previous 12 months.

Estimated change in population due to mobility with the ZMPAP by communal section, April 2024 - March 2025

Overall, over the last 12 months :

- net inflows from the ZMPAP to most of Haiti's communal sections
 - Although net outflows were observed in spring and autumn 2024, particularly from the south of France
- The largest net inflows were recorded at Cayes, Jacmel, Petit-Goâve, Hinche, Gonaïves, Cap-Haïtien and the Belladère and Ounaminthe border crossings.



5-year time series and maps in our report on the prolonged crisis:

<https://www.flowminder.org/resources/publications-reports>. Last updated: until February 2025

Protracted Crisis report
Long term monitoring

Published: 14 March 2025

Impact of the Haiti crisis on population mobility

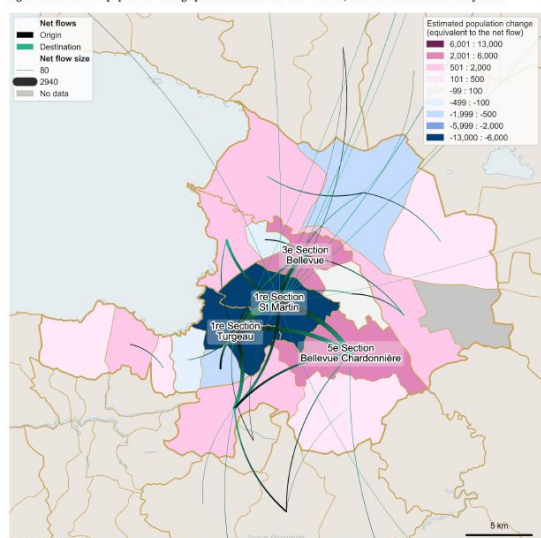
Part 1 | Estimated population change within the Metropolitan Area of Port-au-Prince (ZMPAP) due to mobility, November 2024 to February 2025

Protracted crisis report
Study period:

01 January 2020 - 28 February 2025

FLOWMINDER.ORG

Figure 1.1. Estimated population change per communal section in ZMPAP, November 2024 to February 2025



This map shows how mobility leads to changes in ZMPAP population estimates. The number of people moving within, in and out of ZMPAP leads to population growth or decline in each of the ZMPAP communal sections.
A positive net flow (pink areas) indicates population growth (more people moving into the communal section than leaving).
A negative net flow (blue areas) indicates decrease (more people leaving the communal section than arriving).

Key observations (November 2024 to February 2025)

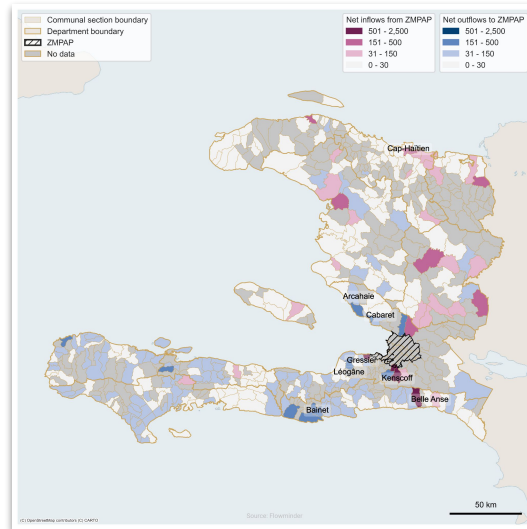
- 1re Section Turgeau in Port-au-Prince and 1re Section St Martin in Delmas experienced very large population decreases (-9,080 and -7,180 respectively) from November 2024 to February 2025 (and especially in November 2024).
a. Turgeau decreased mostly due to relocations within the ZMPAP, while the decrease in Saint-Martin resulted from relocations with communal sections both within and outside of the ZMPAP.
- The population of most other sections of the ZMPAP increased, particularly in 5e Section Bellevue Chardonnière in Pétiot-Ville (+3,380), and 3e Section Bellevue in Tabarre (+2,170), due to relocations within the ZMPAP (Table 1.1) and most from St Martin and Turgeau (Figure 1.1).
- Generally, population change in communal sections of the ZMPAP has been driven by internal mobility within the ZMPAP (Table 1.1).
- Our data do not show movements within each communal section and cannot be directly compared with the latest DTM reports for this reason (ETI 57.3), but the communal sections with the largest population decreases (Turgeau and St Martin) are those affected by armed violence, as well as those with the highest reported displacements and site closures according to DTM.

Population changes within sections of the ZMPAP can be added to put the latest monthly data perspective with the last five years, please see page 2. Overall, the population of the ZMPAP decreased from November 2024 to February 2025, but only by 6,530 people (see p.3 for the mobility between the ZMPAP and the rest of Haiti, and p.4 for a five-year perspective on population change in the ZMPAP and in the six other large urban areas). Data used in this report can be accessed through: <https://haiti.mobility-dashboard.org/>.

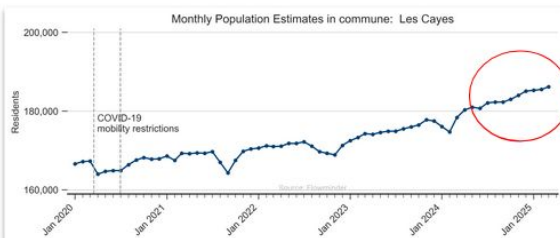
Table 1.1. Estimated population change in ZMPAP communal sections, due to mobility within and outside of the ZMPAP, from November 2024 to February 2025

Commune	Communal section	Population change (in total net flow)	Net flows to ZMPAP sections from other ZMPAP sections	Net flows to ZMPAP sections from outside sections
Port-au-Prince	1re Section Turgeau	-9,080	6,860	-2,220
Delmas	1re Section St Martin	-7,180	2,070	-5,110
Port-au-Prince	2e Section Morne l'Hopital	-790	520	-180
Croix-Des-Bouquets	2e Section Des Vaux	-540	350	-190
Cité Soliel	1re Section Des Vaux	-450	350	-100
Port-au-Prince	3e Section Martissant	-100	60	-160
Tabarre	4e Section Bellevue	10	170	-160
Pétiot-Ville	4e Section Bellevue la Montagne	180	140	40
Carrefour	9e Section Bizoton	200	240	-40
Carrefour	11e Section Rivière Froide	280	0	280
Croix-Des-Bouquets	5e Section Petit Bois	400	330	70
Carrefour	10e Section Thor	620	100	720
Croix-Des-Bouquets	1re Section Des Vaux	650	650	0
Cité Soliel	2e Section Des Vaux	920	1,010	-90
Croix-Des-Bouquets	3e Section Petit Bois	940	880	80
Pétiot-Ville	3e Section Etang du Junc	1,640	1,340	300
Tabarre	3e Section Bellevue Chardonnière	2,170	2,630	-450
Pétiot-Ville	3e Section Bellevue Chardonnière	3,380	2,760	410
Croix-Des-Bouquets	4e Section Petit Bois	No data	No data	No data

The gold column shows the population change per communal section in ZMPAP due to overall mobility. The next column reflects the estimated change from mobility between communal sections within ZMPAP while the last column shows the estimated change from mobility between a ZMPAP communal section and those outside ZMPAP. Thus, the overall change in population (gold column) is the sum of the two columns to the right.



Les Cayes population:



These mobility estimates come from anonymous mobile phone data. These are not key informant estimates or field observations. If you are unfamiliar with this data source, please read our documentation which can be found at www.flowminder.org

info@flowminder.org
@flowminder

www.flowminder.org
haiti.mobility-dashboard.org

89
Foreign Communities
& Development Office

Digicel FLOWMINDER.ORG

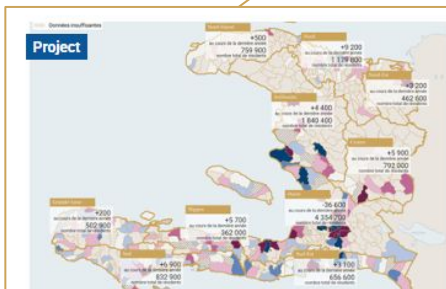
115

Digicel

FLOWMINDER.ORG

Resources

Publications & Reports

[Home](#) / [Resources](#) / Publications & Reports

03 Apr 2025

Rapport de préparation à la saison des ouragans sur la mobilité en Haïti pour la période du 01 avril 2024 au 31 mars 2025



03 Apr 2025

Hurricane S Mobility Sit April 2024

Rapport de préparation

Publié : 02 avr. 2025

Rapport de préparation sur la mobilité - Haïti

Partie 1 | Aperçu national (01 avr. 24 - 31 mars 25)

Rapport de préparation

Période d'étude : 01 avr. 24 - 31 mars 25

FLOWMINDER.ORG

Sections communales présentant la plus forte variation modélisée de population entre le 1 avr. 2024 et 31 mars 2025

Département	Section communale	Estimation de la population mars 2025	Type de tendance au cours des 12 derniers mois	Variation modélisée au cours des 12 derniers mois
Ouest	1 ^{re} Section Turgense	480 500	En baisse	-14 200
Ouest	1 ^{re} Section St Martin	486 300	En baisse	-15 400
Ouest	3 ^e Section Bellevue Chardonnière	271 900	En hausse	10 600
Ouest	3 ^e Section Bellevue	121 900	En hausse	10 100
Ouest	2 ^e Section Morne l'Hôpital	109 000	En baisse	-17 800

Principales observations pour la période 01 avr. 24 - 31 mars 25

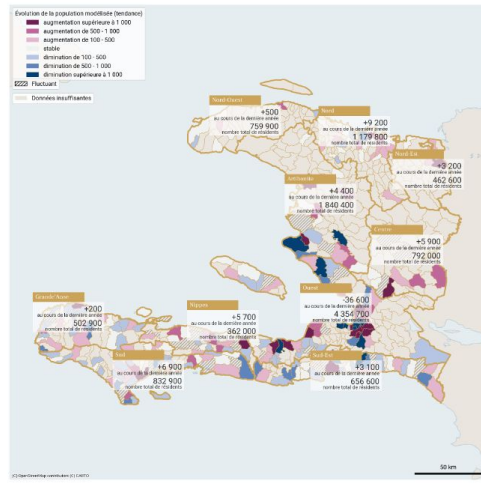
- Dans la ZMPAP, au cours du seul mois dernier (février à mars 2025), la population de la 1^{ère} section Turgense (Port-au-Prince) a chuté d'environ 20 000 personnes, et celle de la 1^{ère} section St Martin (Delmas) de près de 10 000 personnes.
- La population de ces deux sections était déjà en baisse au cours des 12 derniers mois, mais cette baisse, sur un mois seulement, est inhabituelle et pourrait refléter les déplacements signalés dans les rapports de DTM.
- D'autres sections de la ZMPAP ont connu d'importantes baisses de population, notamment la 2^e section de Morne l'Hôpital (Port-au-Prince) et la 1^{ère} section de Rivière Froide (Carrefour).
- Parallèlement, la population de la 5^e section de Bellevue Chardonnière (Pétion-Ville) et de la 3^e section de Bellevue (Tabarre) a continué d'augmenter au cours des 12 derniers mois, et les deux ont connu une augmentation de 500 personnes au cours du dernier mois.
- La population du département de l'Ouest a globalement diminué d'environ 18 200 personnes au cours du seul mois dernier (février à mars 2025) (de 600 depuis avril 2024).
- Le déclin démographique du mois dernier marque la fin d'une période de stabilité de huit mois (la population s'élevait à environ 4 370 000 personnes de juillet 2024 à février 2025, avant de tomber à 4 354 700 personnes en mars).
- En conséquence de la mobilité avec l'Ouest - et d'autres mouvements internes - de petites mais notables augmentations de population sont observées au cours du dernier mois dans les départements de l'Artibonite, du Centre, du Nord, du Nord-Est, du Sud et du Sud-Est.
- En dehors de l'Ouest, on a observé de fortes augmentations dans la 1^{ère} section de Bourdet (Les Cayes) dans le Sud, la 2^{ème} section du Haut du Cap (Cap-Haïtien) dans le Nord, la 3^{ème} section de Charrette dans l'Artibonite et la 1^{ère} section du Haut Marikibou (Guananicho) dans le Nord-Est, un point frontalier avec la République dominicaine (+9 000 au cours du seul mois dernier).

Ces estimations de la population proviennent des méthodes de télémétrie mobile (Cell Detail Network) de Digicel (2019) données d'actualité de la mobilité mobile et d'autres données de données à des fins de référence et d'appui. Les estimations fournies ne sont pas des estimations d'urgence, des estimations d'informateurs clés ou des observations sur le terrain. Si vous êtes pas d'accord avec cette source de données, veuillez fournir plus d'informations sur (en anglais uniquement).

info@flowminder.org
@flowminder

www.flowminder.org
Haïti.mobility-dashboards.org

Évolution de la population, par section communale, modélisée à partir des estimations mensuelles, et estimation de l'évolution de la population par département (en encadré), du 1 avr. 2024 au 31 mars 2025



How can this data be used to prepare for the hurricane season?



Identify differences with
projections or other
available data



Identify the profile and potential
needs of displaced persons,
depending on their origin

How can this data be used to prepare for the hurricane season?



Risk mapping



Emergency
planning



Risk exposure

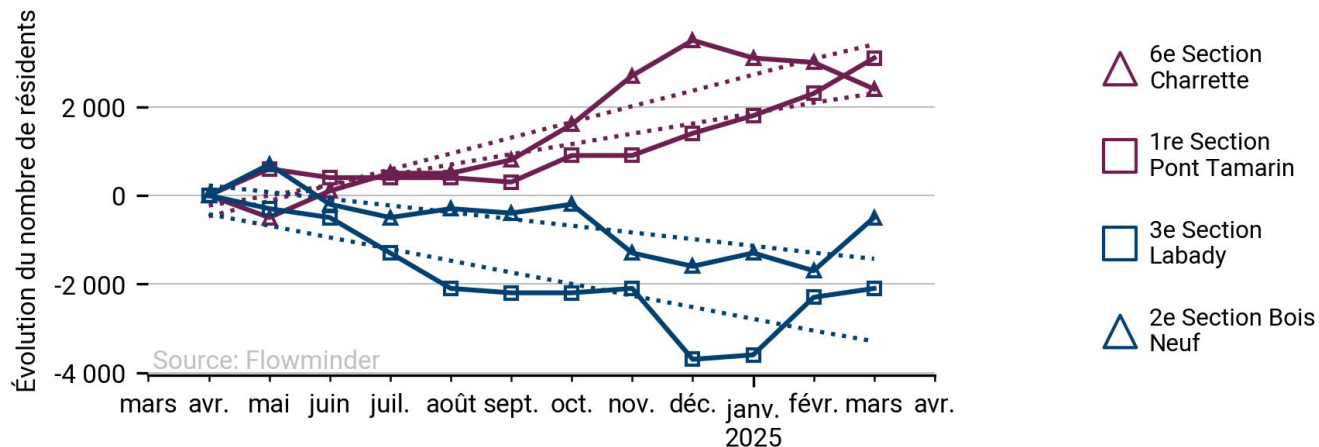
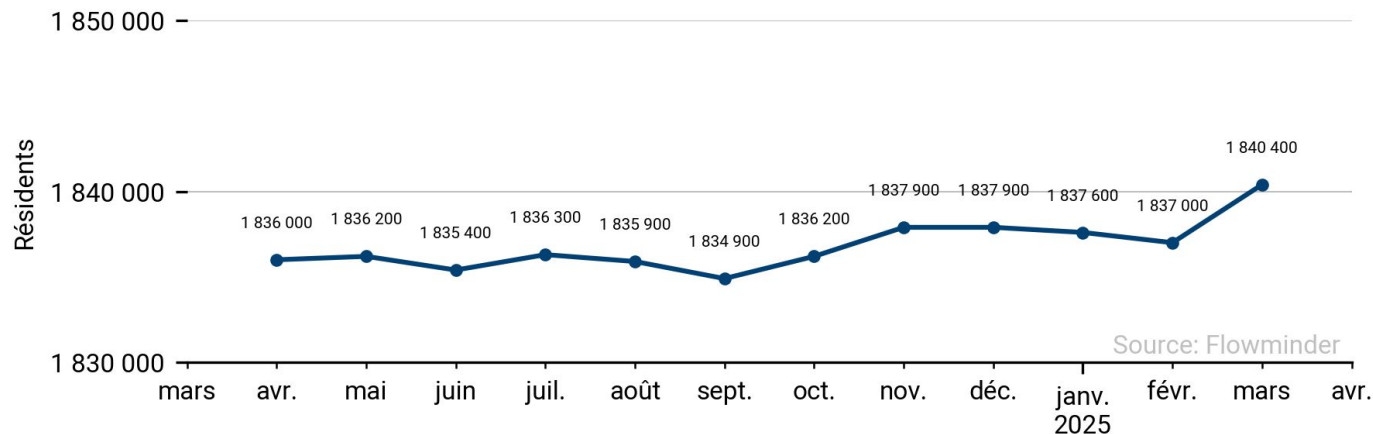


Placement of
resources,
shelter...

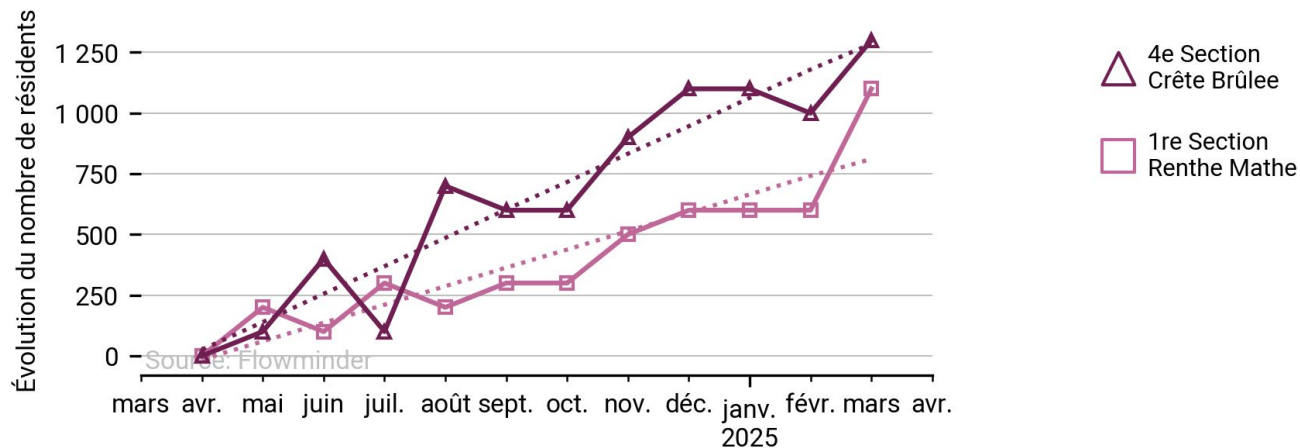
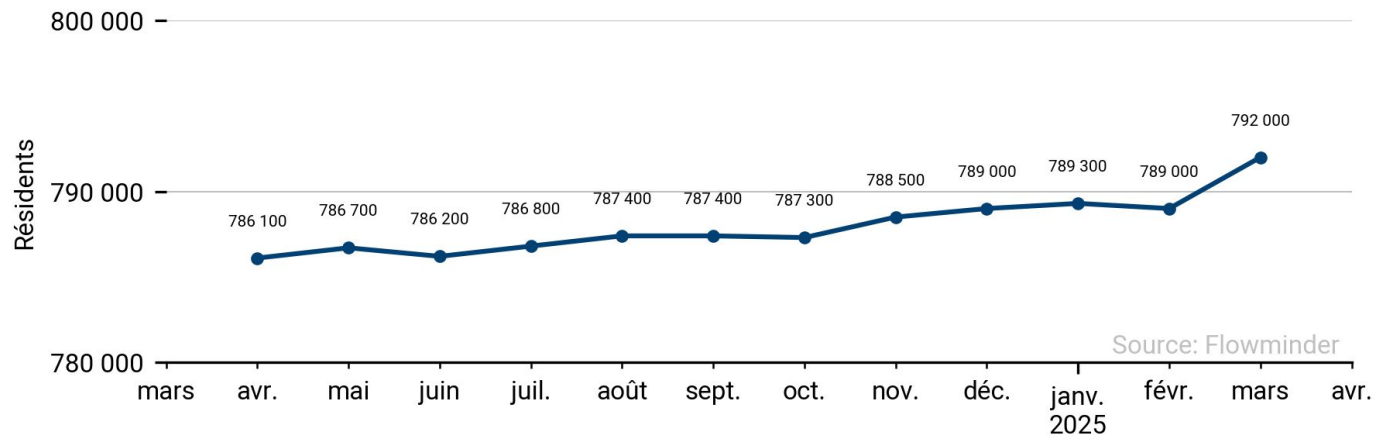
An aerial photograph of a coastal city, likely San Juan, Puerto Rico, taken from an elevated position. The city is densely packed with buildings, many with red-tiled roofs. In the background, the ocean is visible under a dramatic sunset sky with orange and yellow hues. A large blue semi-transparent rectangle is overlaid on the left side of the image, containing the title text. A small yellow circle is positioned behind the first letter of the word 'Key'.

Key figures from the hurricane season preparedness report

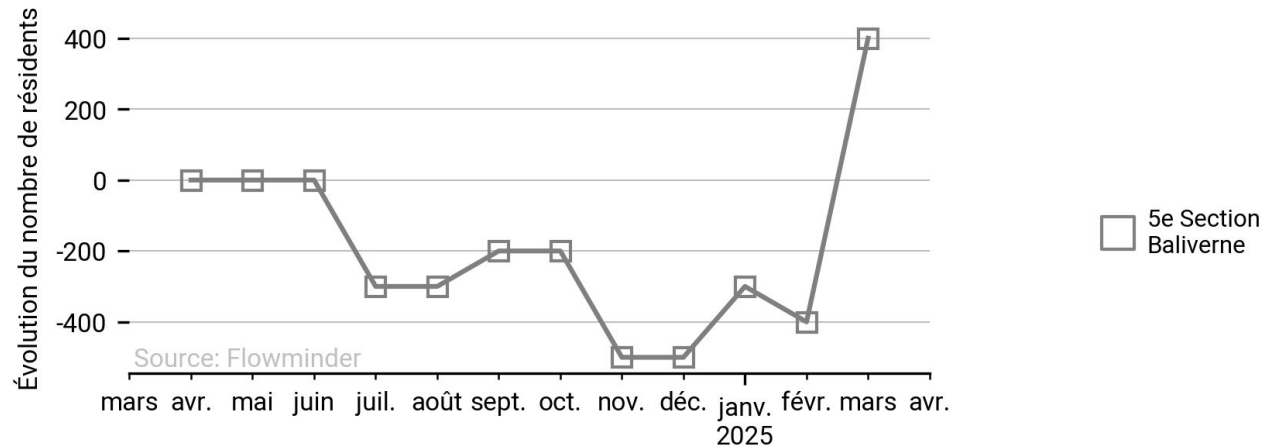
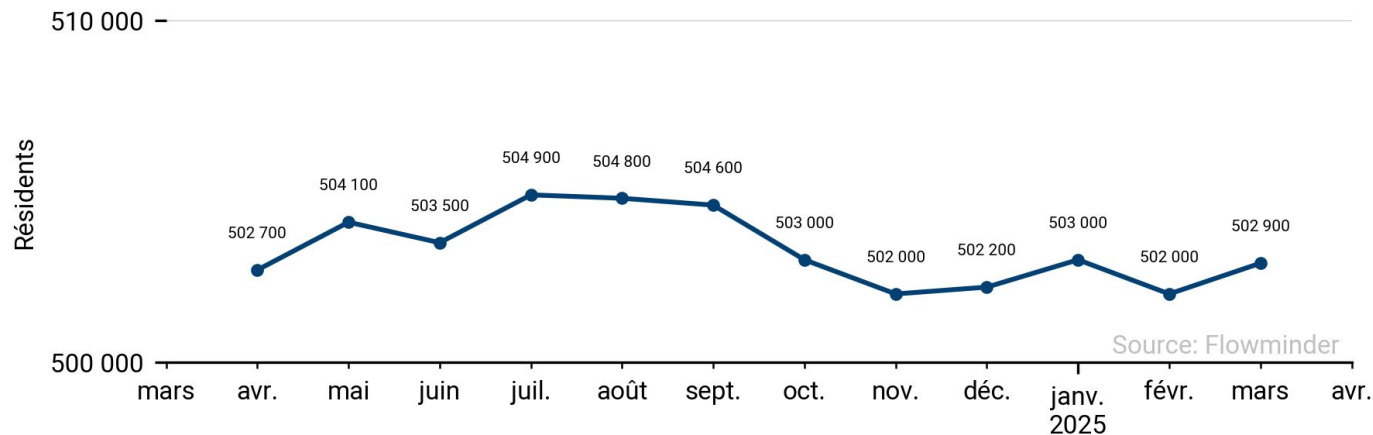
Artibonite



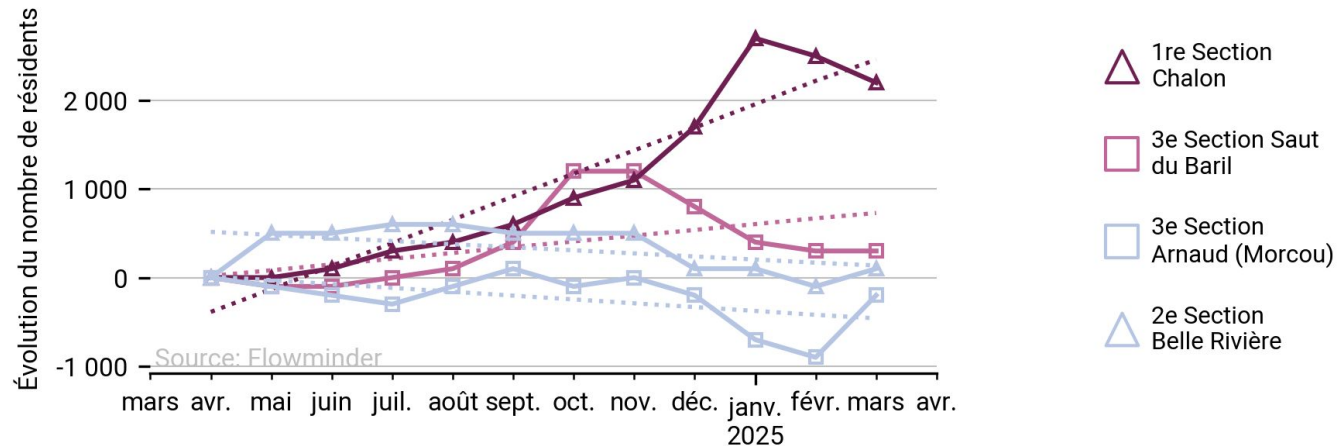
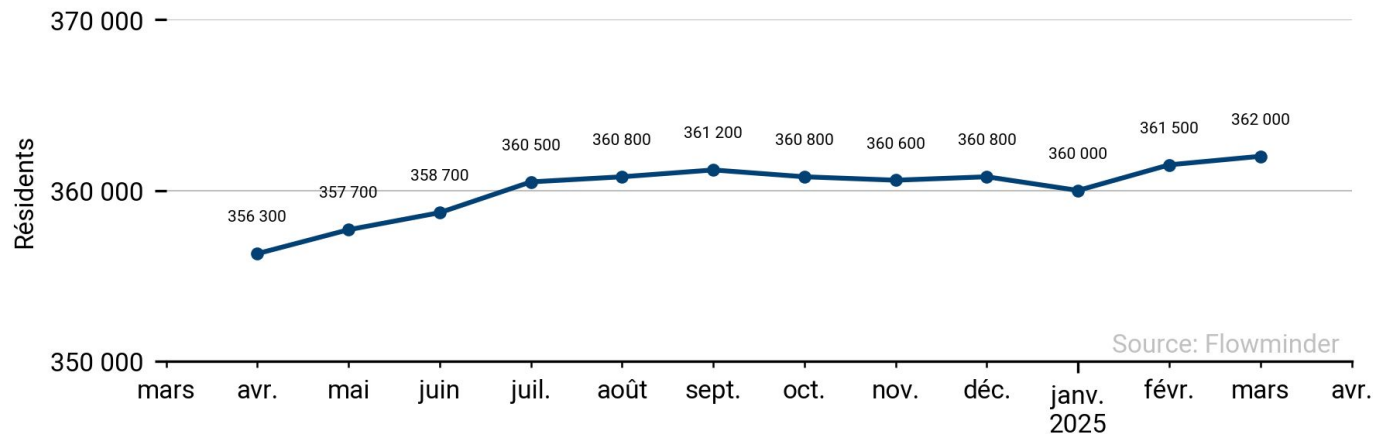
Centre



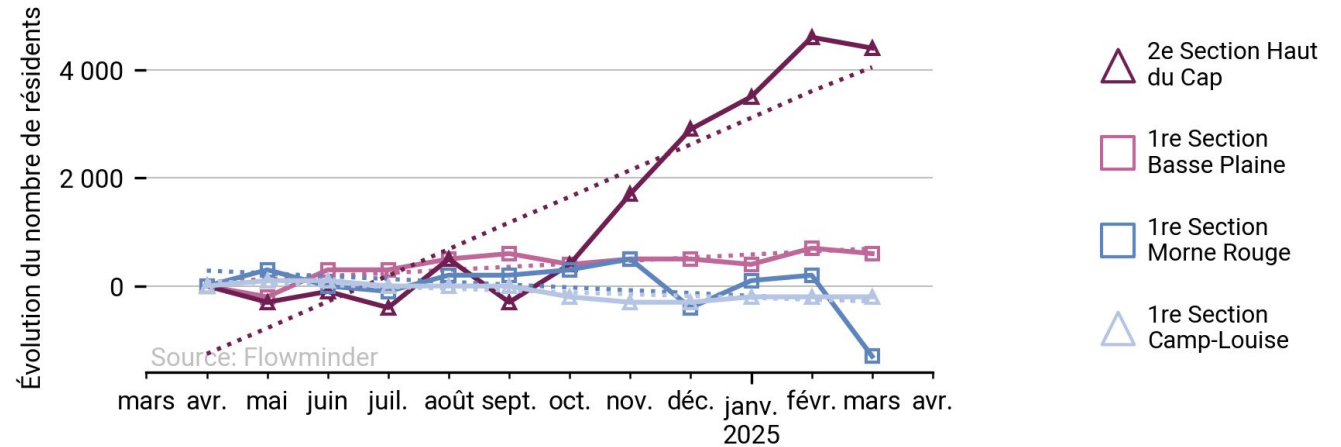
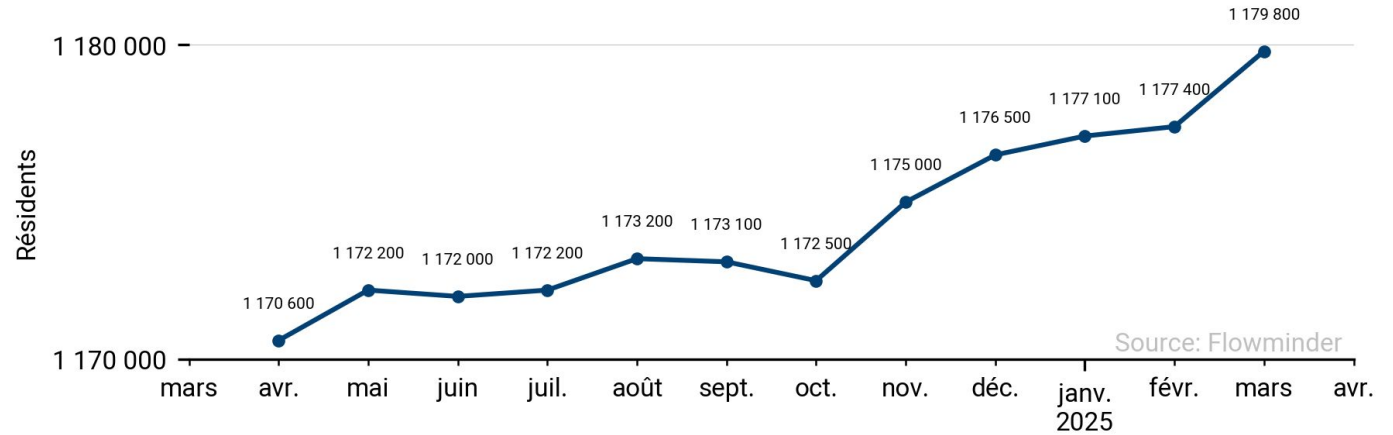
Grande-Anse



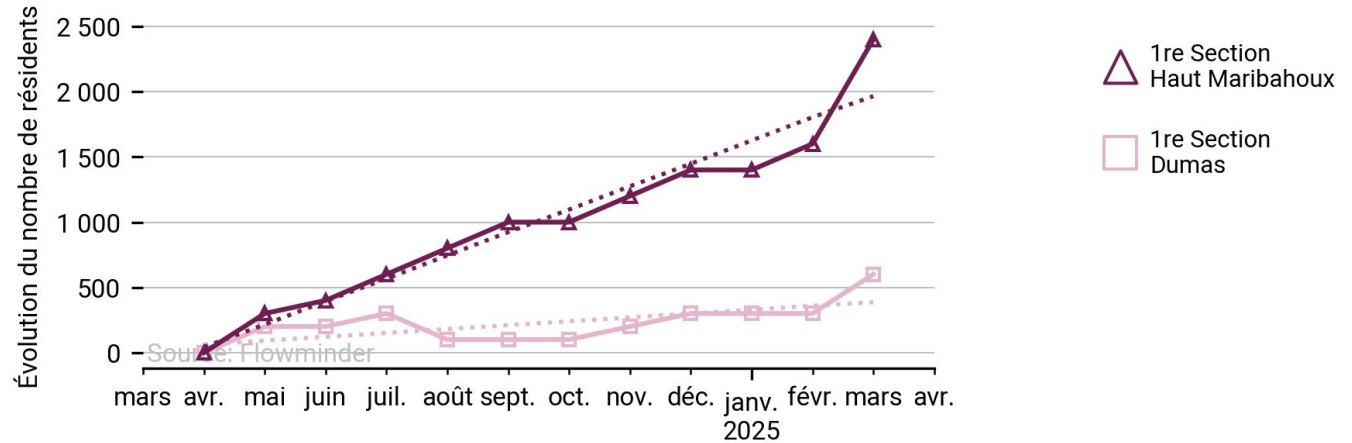
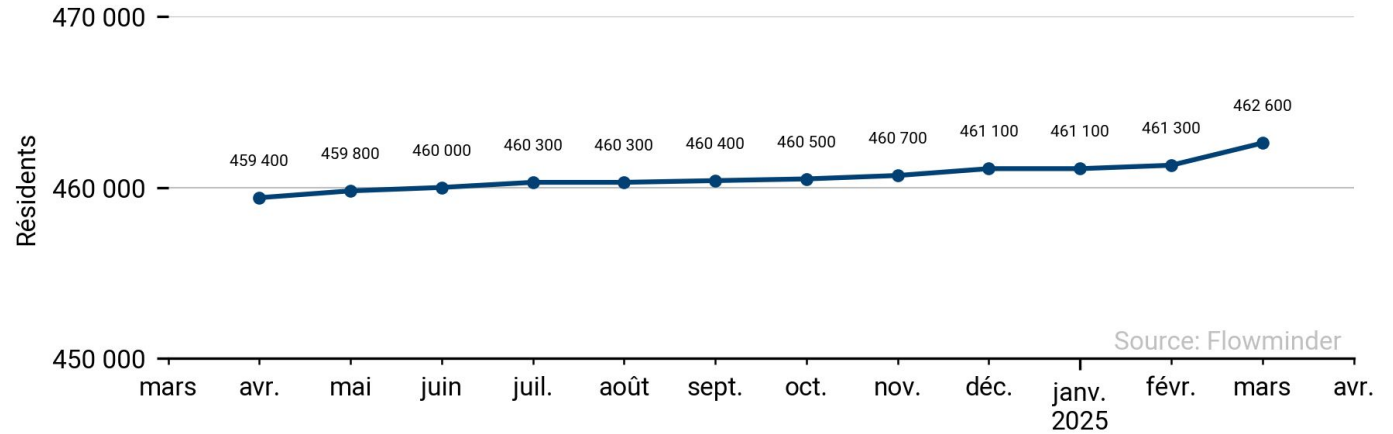
Nippes



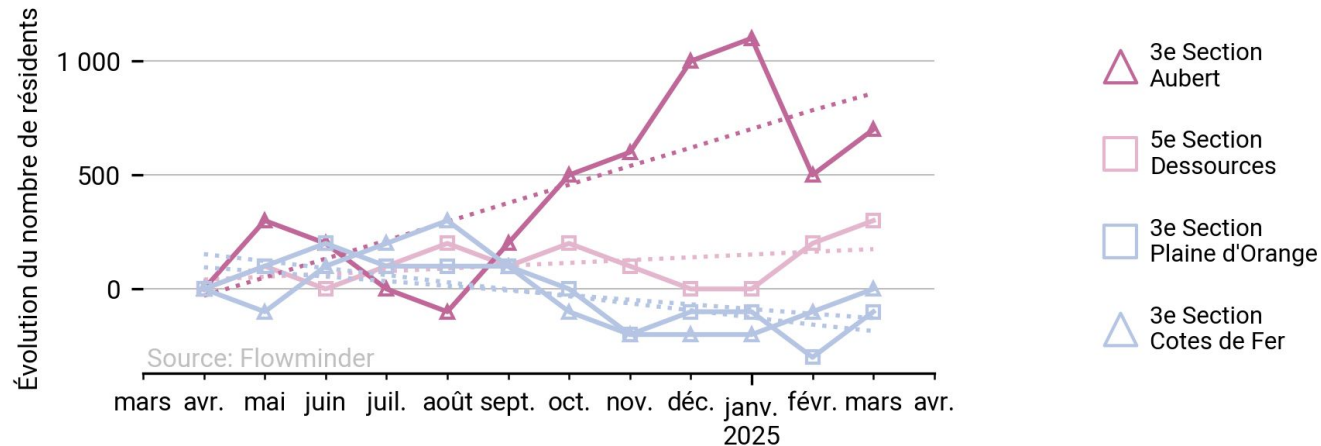
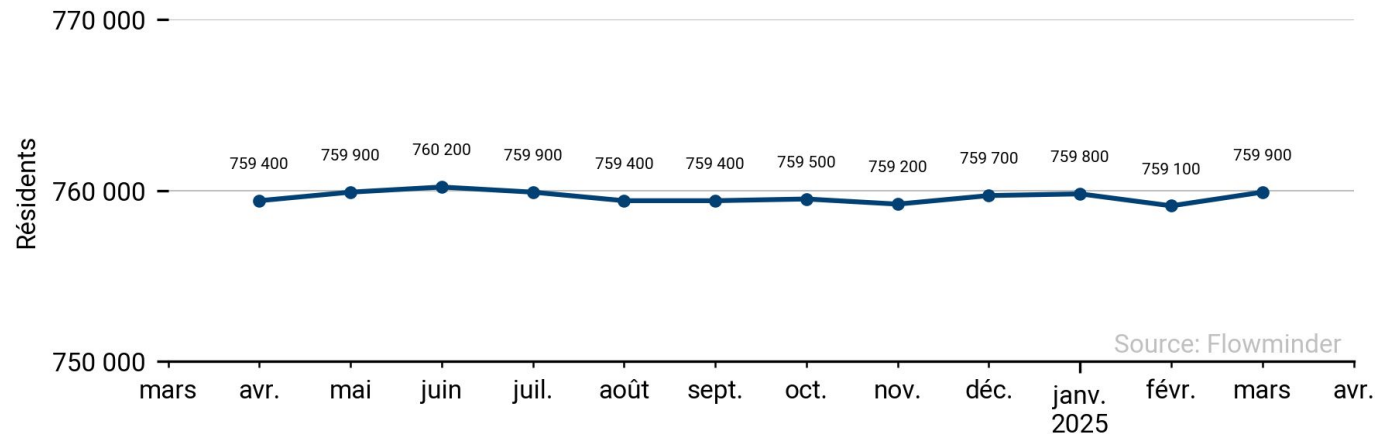
North



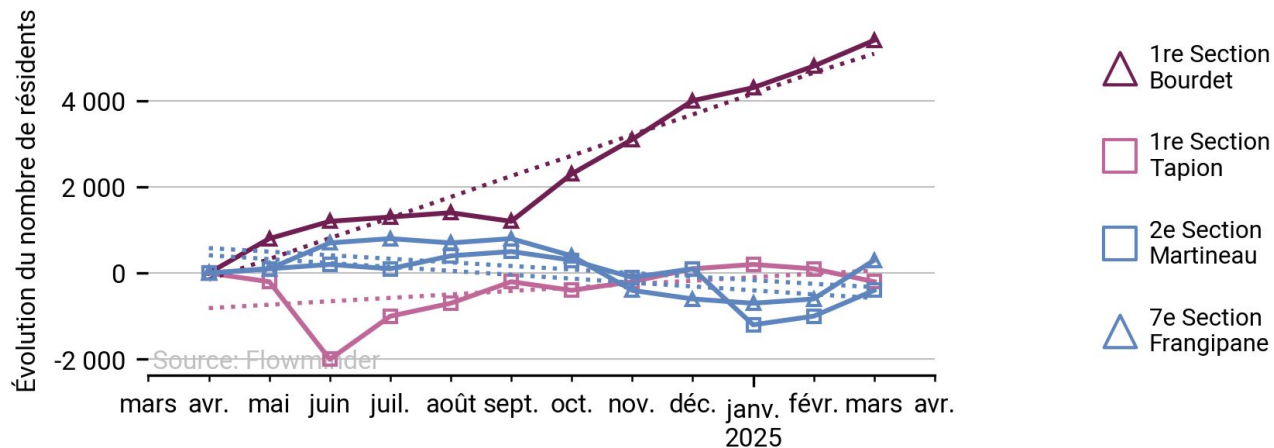
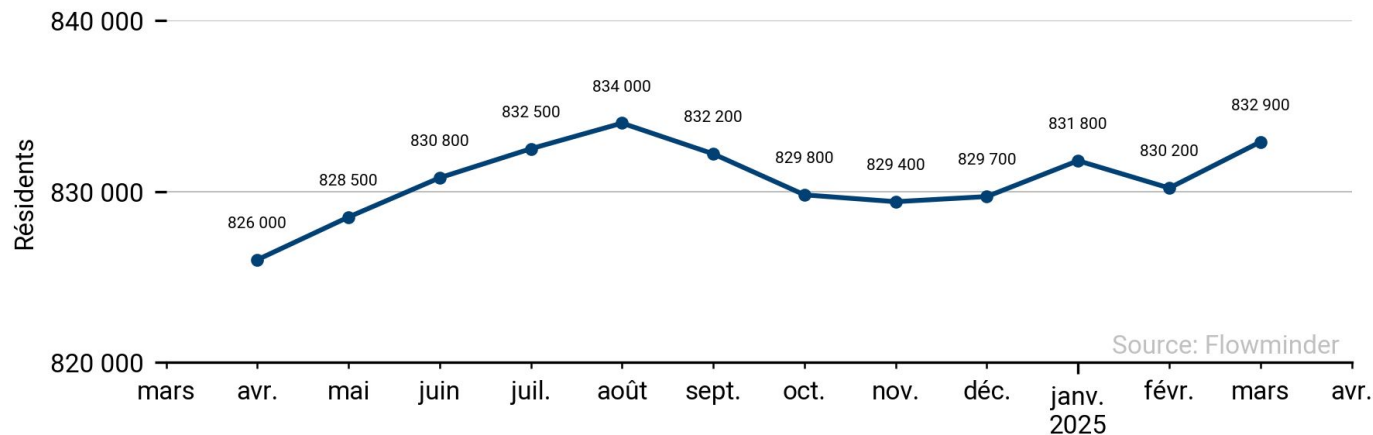
North-Eas t



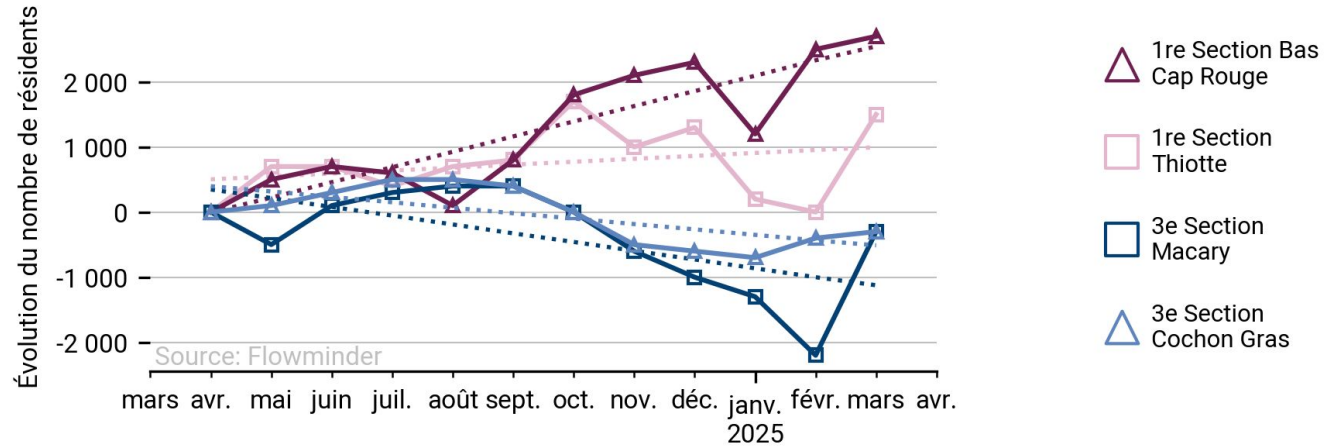
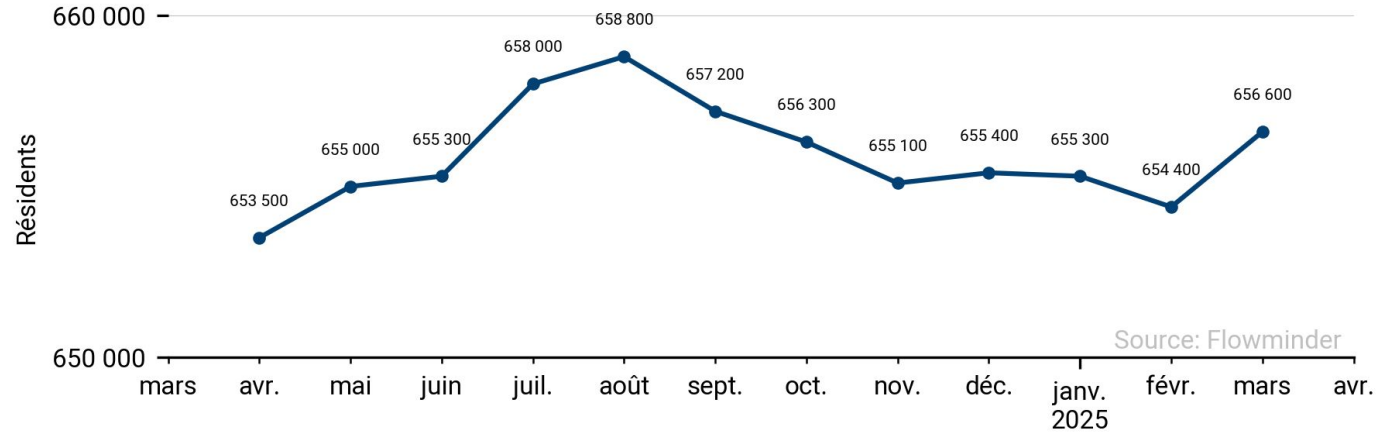
Northwest



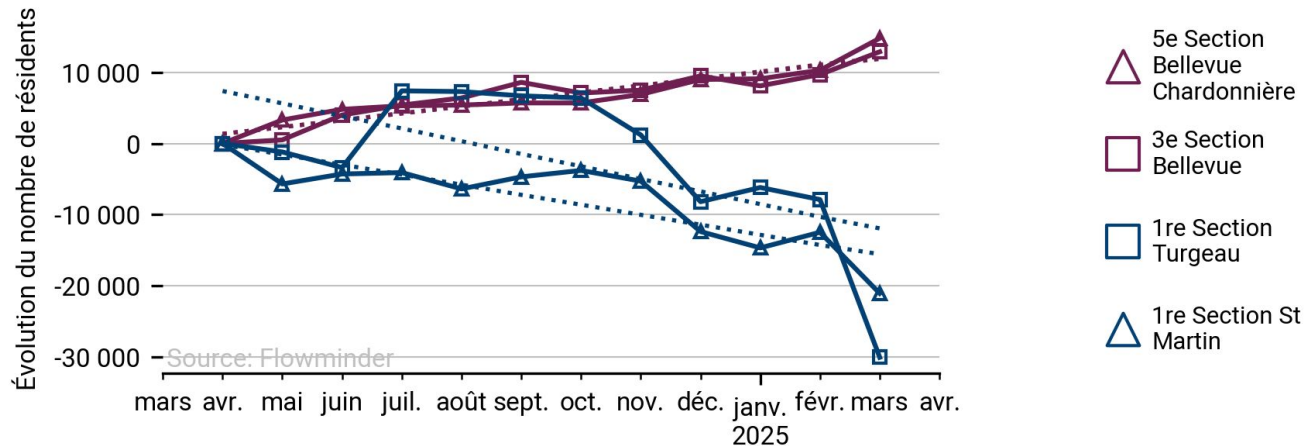
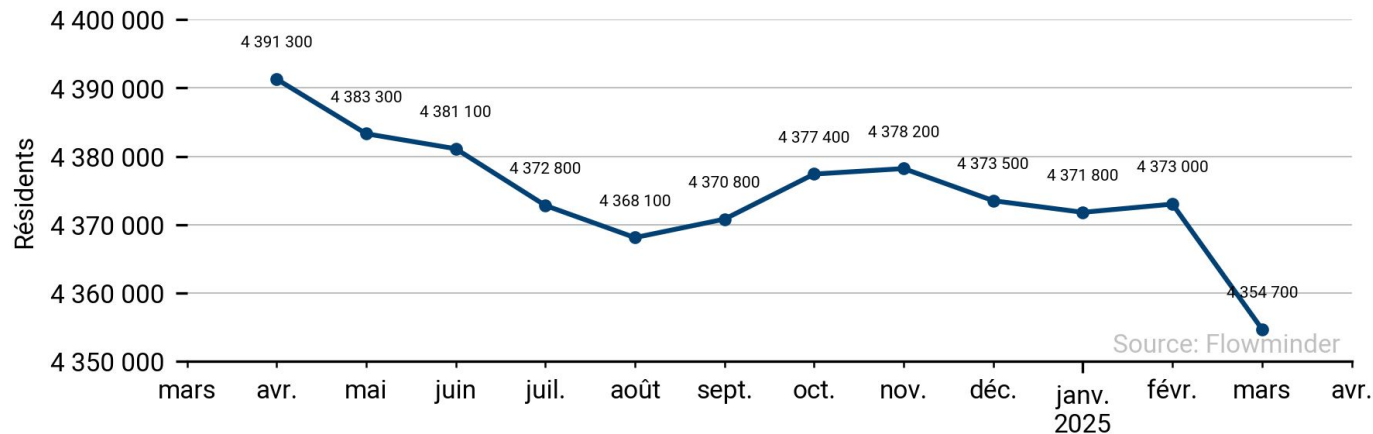
South



South-East t



West



FLOWMINDER.ORG



www.flowminder.org



info@flowminder.org



[@Flowminder](https://twitter.com/Flowminder)